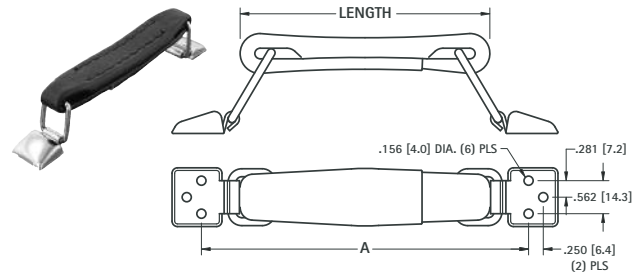


# CARRYING HANDLES

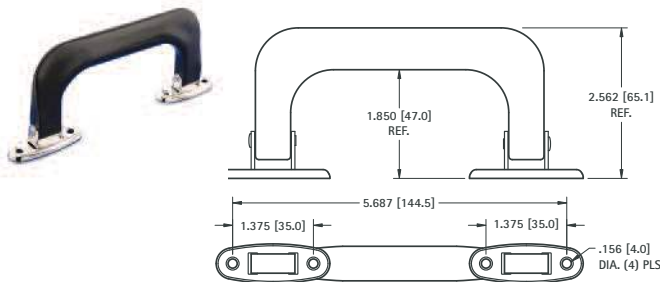


This retractable handle is manufactured with black leather-like material and Nickel Plated steel hardware. Handle folds flat when not in use. Mounts with #6 screws (not supplied).



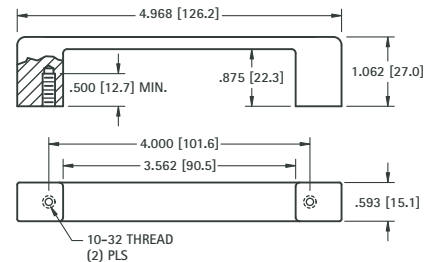
CAT. NO.	LENGTH	A
8351	4.500 (114.3)	6.000 (152.4)
8352	5.500 (139.7)	7.000 (177.8)
8353	6.000 (152.4)	7.500 (190.5)

Folds flat on case when not in use. Mounts with rivets or #6 screws (not supplied).



**MATERIAL:**  
**Grip:** Polypropylene, Black  
**Post:** Steel, Nickel Plate  
**Pin:** Steel, Nickel Plate

CAT. NO.	COLOR
8356	BLACK

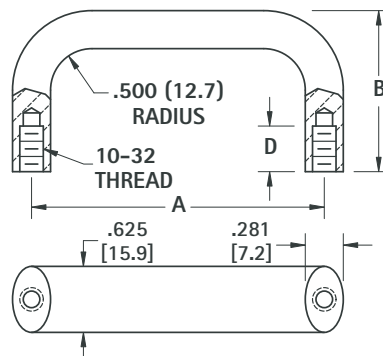


CAT. NO. 7196

MATERIAL: Zinc, Satin Brushed, Nickel Plate

HANDLES

# OVAL INSTRUMENTATION HANDLES



**MATERIAL:**  
**Aluminum:** QQ-A-200, Alloy 6061-T6, Black Anodized per MIL-A-8625

ALUMINUM CAT. NO.	A MTG. CTRS.	B HEIGHT	D DEPTH
7186	4.000 (101.6)	1.750 (44.5)	.500 (12.7)
544	4.000 (101.6)	2.000 (50.8)	
540	4.500 (114.3)	1.750 (44.5)	
545	4.500 (114.3)	2.000 (50.8)	
541	5.000 (127.0)	1.750 (44.5)	
546	5.000 (127.0)	2.000 (50.8)	
542	5.500 (139.7)	1.750 (44.5)	
547	5.500 (139.7)	2.000 (50.8)	.375 (9.5)
7187	6.000 (152.4)	1.375 (34.9)	
543	6.000 (152.4)	1.750 (44.5)	
548	6.000 (152.4)	2.000 (50.8)	
7188	6.437 (163.5)	1.750 (44.5)	.500 (12.7)

For Custom Handle Designs  
 visit our online Part Builder at  
[www.keyelco.com](http://www.keyelco.com)