

# RPTC

## TEMPEST/COTS AC EMI POWER LINE FILTER

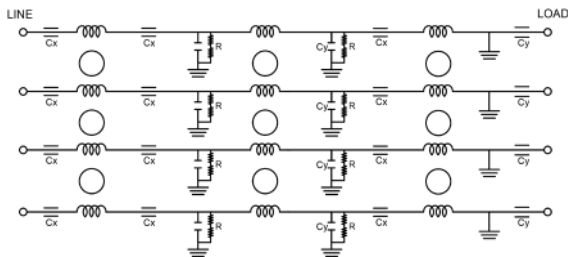
### FEATURES

- » Rated currents include **10A, 30A, 60A, 100A, and 225A**
  - » Multi Stage Line Filter
  - » Available with **S** (studs)
  - » Agency Approved to RoHS
- Y-cap value can be adjusted to fit specification

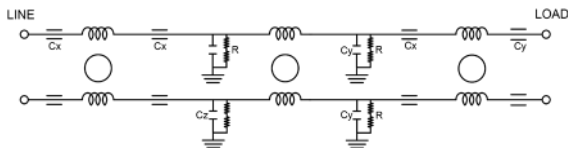


### ELECTRICAL SCHEMATIC

#### RPTC2001/RPTC2004/RPTC2012



#### RPTC2002/RPTC2003/RPTC2010/RPTC2011



### HOW TO ORDER

RPTC2XXX- Y - Z

Z = TERMINAL (-T)  
X = RATED CURRENT

RPTC2XXX=FILTER SERIES

**NOTE:** USE ANY COMBINATION OF -X (AMPS) WITH ANY -Y RATINGS  
E.G. **RPTC2001-225** (225 AMPS)

For **X** and **Y** options see product specification table.

### SPECIFICATIONS

<b>OPERATING FREQUENCY</b>	47/63 Hz
<b>MAX. OPERATING VOLTAGE</b>	RPTC2001 480 VAC +10% RPTC2002 300 VAC +10% RPTC2003 300 VAC +10% RPTC2004 480 VAC +10% RPTC2010 300 VAC +10% RPTC2011 300 VAC +10% RPTC2012 480 VAC +10%
<b>AMBIENT TEMPERATURE</b>	-25 TO 70°C
<b>CLIMATIC CATEGORY</b>	25/100/21
<b>TERMINALS (-T)</b>	STUDS: 10A (10-32), 30-100A (1/4-20), 225A (1/2-13)

**TYP. WEIGHT, LBS (KG)** 3.0(1.4) - 150.0 (68.0)

<b>SINGLE PHASE</b>	RPTC2002, RPTC2003 RPTC2010, RPTC2011
<b>3-PHASE WYE</b>	RPTC2001, RPTC2004 RPTC2012

### HIPOT RATINGS

**LINE TO GROUND** 1500 VDC

### TYPICAL APPLICATIONS

- ✓ TEMPEST/Mil-461/DO-160

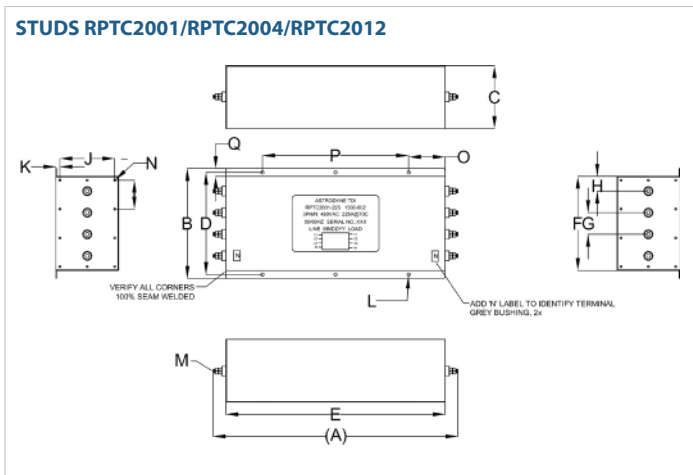
# RPTC

## TEMPEST/COTS AC 3-PHASE WYE EMI POWER LINE FILTER

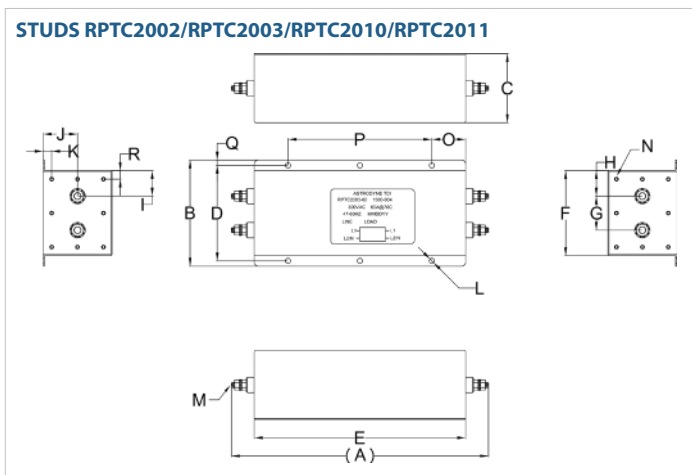
MODEL NO.	RATED CURRENT, A @ 40° C	TERMINAL OPTIONS			MAX. DIMENSIONS" (MM)		
		(QD) INPUT/OUTPUT	(W) INPUT/OUTPUT	(S) INPUT/OUTPUT	WIDTH	(LENGTH)	HEIGHT
RPTC2001-225	225			✓	14.00"(356)	31.25"(794)	8.00"(203)
RPTC2002-10	10			✓	4.50"(114)	9.81"(249)	2.00"(51)
RPTC2003-60	60			✓	5.00"(127)	12.16"(309)	3.25"(83)
RPTC2004-100	100			✓	8.50"(216)	20.71"(526)	6.00"(152)
RPTC2010-30	30			✓	5.00"(127)	12.15"(309)	3.25"(83)
RPTC2011-100	100			✓	8.50"(216)	19.97"(507)	6.00"(152)
RPTC2012-60	60			✓	8.50"(216)	20.71"(526)	6.00"(152)

### RPTC MECHANICAL OUTLINES (MM)

**STUDS RPTC2001/RPTC2004/RPTC2012**



**STUDS RPTC2002/RPTC2003/RPTC2010/RPTC2011**



# RPTC

## TEMPEST/COTS AC 3-PHASE **WYE** EMI POWER LINE FILTER

SERIES	(A)	B	C	D	E	F	G	H	I	J	K	L	M	N	O	P	Q	R
<b>STUDS (RPTC2001)</b>	31.25" (794)	14.00" (356)	8.00" (203)	13.00" (330)	28.00" (711)	12.00" (305)	2.80" (71)	1.88" (48)	4.60" (117)	4.00" (102)	0.50" (13)	0.20" (5)	1/2-13 STUD, 8x	INSERT, 10-32, 20x	4.66" (118)	18.66" (474)	0.50" (13)	N/A
<b>STUDS (RPTC2002)</b>	9.81" (249)	4.50" (114)	2.00" (51)	4.00" (102)	8.00" (203)	3.50" (89)	1.50" (38)	1.00" (25)	1.00" (25)	1.00" (25)	0.40" (10)	Ø0.20", 6x (Ø5.2, 6x)	STUD, 10-32, 4x	INSERT, 8-32, 12x	1.60" (41)	4.80" (122)	0.25" (6)	0.40" (10)
<b>STUDS (RPTC2003)</b>	12.16" (309)	5.00" (127)	3.25" (83)	4.50" (114)	10.00" (254)	4.00" (102)	1.61" (41)	1.20" (30)	1.20" (30)	1.63" (41)	0.40" (10)	Ø0.24", 6x (Ø6.2, 6x)	STUD, 1/4-20, 4x	INSERTS, 8-32, 16x	1.60" (41)	6.80" (173)	0.25" (6)	N/A
<b>STUDS (RPTC2004)</b>	20.71" (526)	8.50" (216)	6.00" (152)	3.81" (97)	18.00" (457)	7.00" (178)	1.46" (37)	1.30" (33)	3.00" (76)	3.00" (76)	0.50" (13)	Ø0.24", 6x (Ø6.2, 6x)	1/2-13 STUD, 8x	INSERT, 10-32, 20x	3.00" (76)	12.00" (305)	0.38" (10)	N/A
<b>STUDS (RPTC2010)</b>	12.15" (309)	5.00" (127)	3.25" (83)	4.50" (114)	10.00" (254)	4.00" (102)	1.61" (41)	1.20" (30)	1.20" (30)	1.63" (41)	0.40" (10)	Ø0.24", 6x (Ø6.2, 6x)	STUD, 1/4-20, 4x	INSERTS, 8-32, 16x	1.60" (41)	6.80" (173)	0.25" (6)	N/A
<b>STUDS (RPTC2011)</b>	19.97" (507)	8.50" (216)	6.00" (152)	7.75" (197)	18.00" (457)	7.00" (178)	1.46" (37)	2.76" (70)	2.76" (70)	3.00" (76)	0.50" (13)	Ø0.24", 6x (Ø6.2, 6x)	STUD, 1/4-20, 4x	INSERTS, 8-32, 16x	3.00" (76)	12.00" (305)	0.38" (10)	N/A
<b>STUDS (RPTC2012)</b>	20.71" (526)	8.50" (216)	6.00" (152)	3.81" (97)	18.00" (457)	7.00" (178)	1.46" (37)	1.30" (33)	3.00" (76)	3.00" (76)	0.50" (13)	Ø0.24", 6x (Ø6.2, 6x)	1/2-13 STUD, 8x	INSERT, 10-32, 20x	3.00" (76)	12.00" (305)	0.38" (10)	N/A

TYPICAL TOLERANCE: +/-0.02" (0.50MM)

### CONTACT FACTORY FOR TYPICAL INSERTION LOSS, dB (50/50 Ohm)