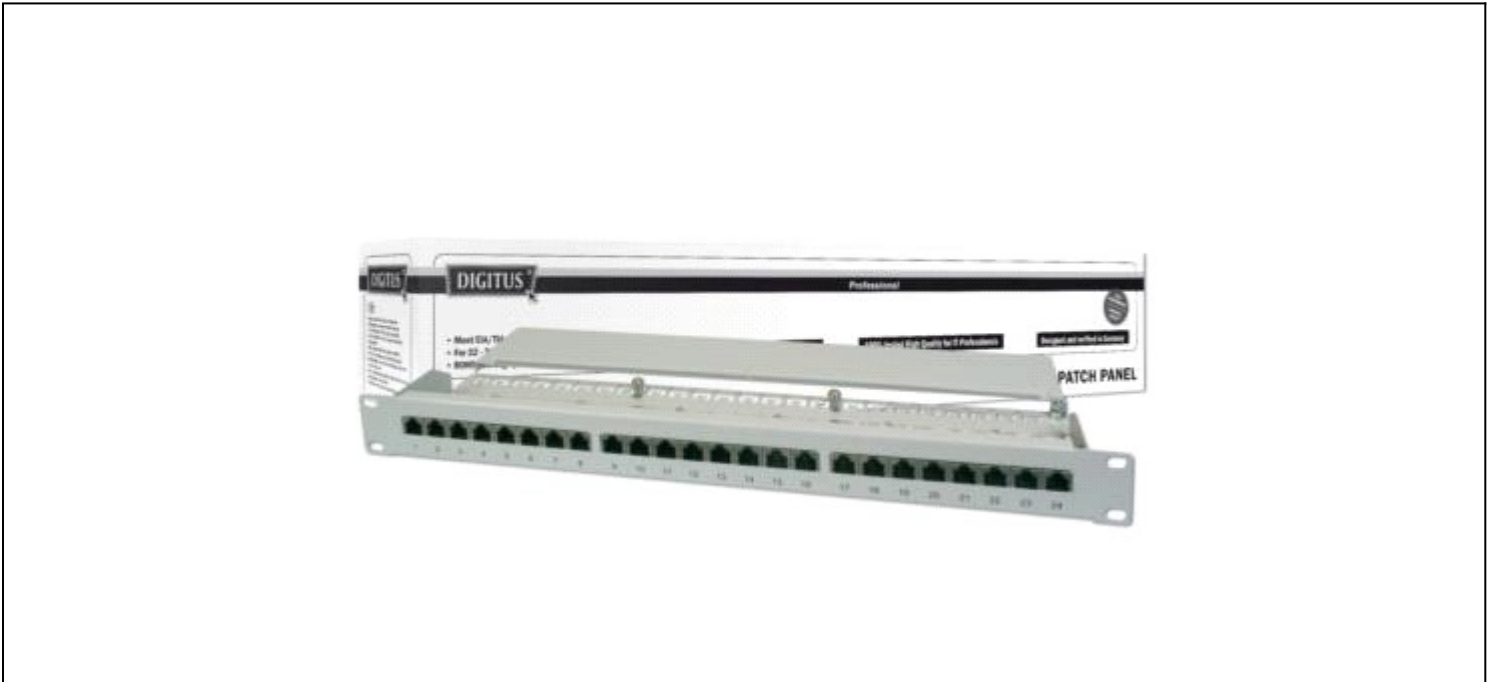


DIGITUS CAT 5e, Class D Patch Panel

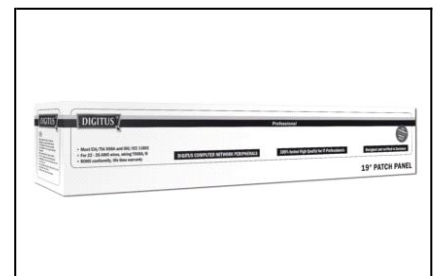
DN-91524S 4016032241522



DIGITUS CAT 5e, Class D Patch Panel, shielded
24-port RJ45, 8P8C, LSA, 1U, Rack Mount Color grey RAL 7035

Best performance and link quality for your network

- 1 ISO/IEC 11801 and EN 50173
- 1 RJ45 jacks
- 1 Cable installation via LSA strips, color codes based on EIA/TIA 568 A & B
- 1 Suitable for 483mm (19") Rack Mount
- 1 Material housing: SECC, 1,5mm ElectroGalvanized, Cold-rolled Steel accc. EN1.4301, UNS S30400, AISI 304 and LMSAD110
- 1 Category: CAT 5e
- 1 Ports: 24
- 1 Color: light grey, RAL 7035
- 1 Units: 1
- 1 Dimensions (HxWxD): 44,483,109 mm



DIGITUS CAT 5e, Class D Patch Panel

DN-91524S 4016032241522

➔ **Logistics**

| | Number (pcs) | Weight (kg) | Depth (cm) | Width (cm) | Height (cm) | cm ³ |
|------------------------------|-----------------|----------------|---------------|---------------|----------------|-----------------|
| Packaging Unit Carton | 8 | 14,08 | 58,00 | 33,00 | 33,00 | 63162,00 |
| Packaging Unit Inside | 1 | 1,76 | 8,00 | 56,00 | 15,00 | 6720,00 |
| Packaging Unit Single | 1 | 1,76 | 8,00 | 56,00 | 15,00 | 6720,00 |
| Net single without Packaging | 1 | 0,00 | 4,50 | 48,50 | 11,00 | 2400,75 |

➔ **Packaging type**



Country of origin: China