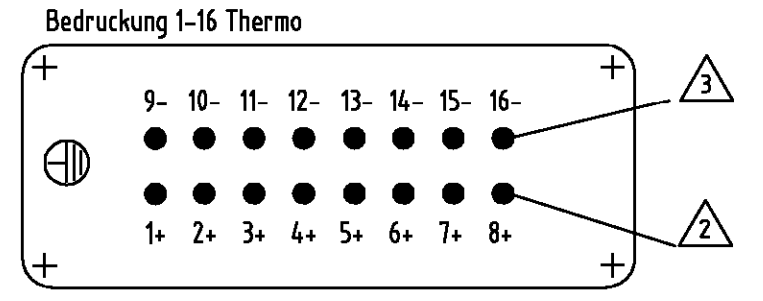
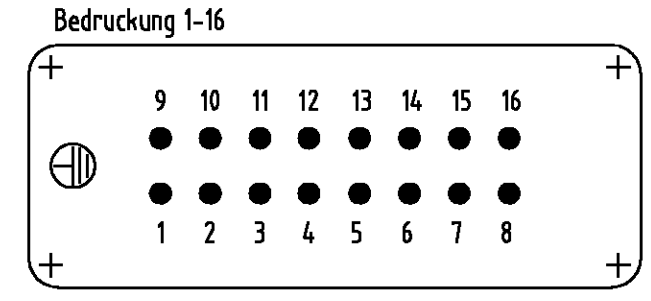


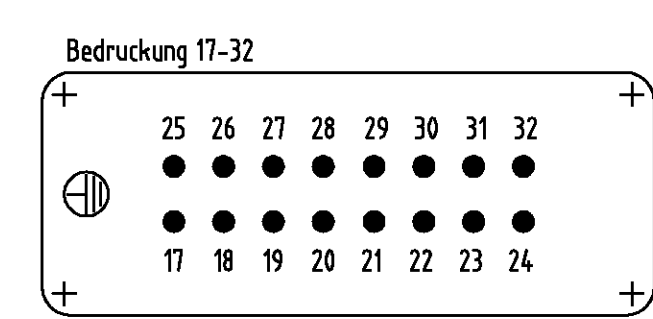
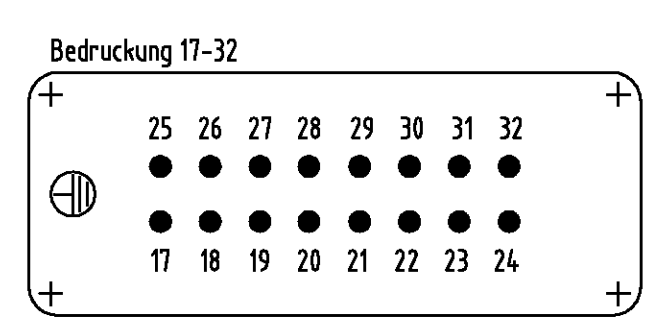
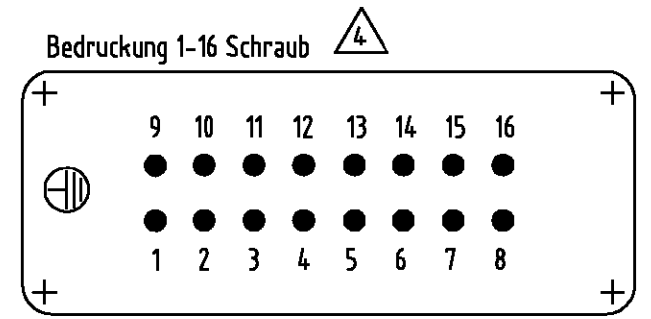
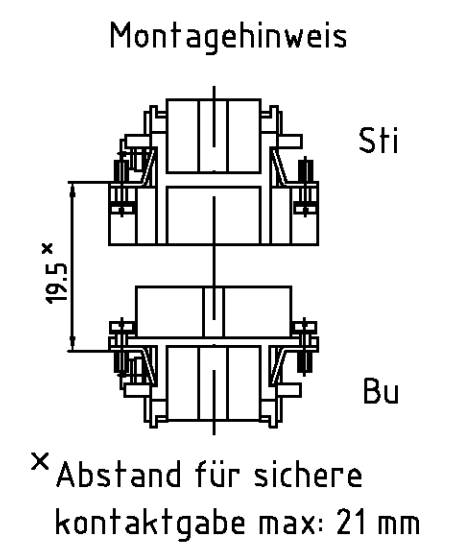
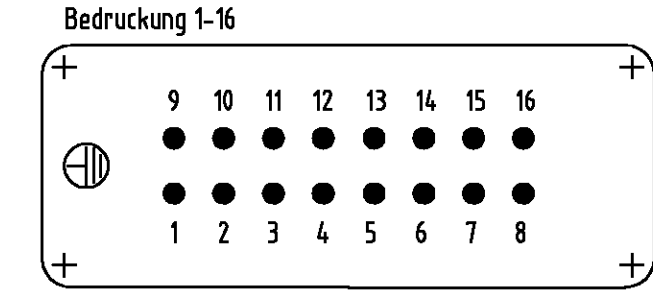
Kontaktanordnung Ansicht Anschlußseite
Contact arrangement view from termination side



Kontaktanordnung Ansicht Anschlußseite
Contact arrangement view from termination side



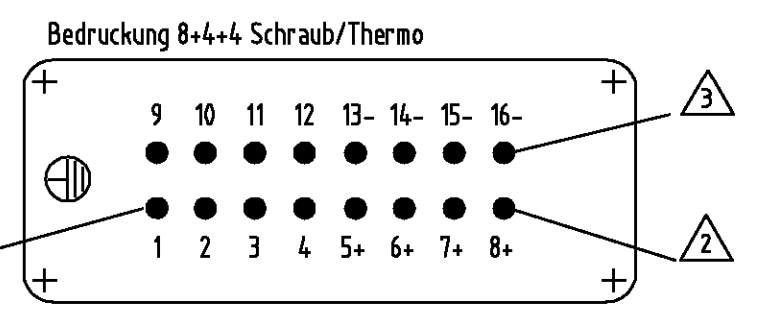
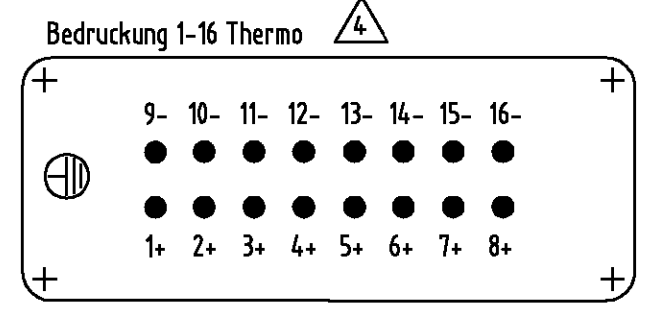
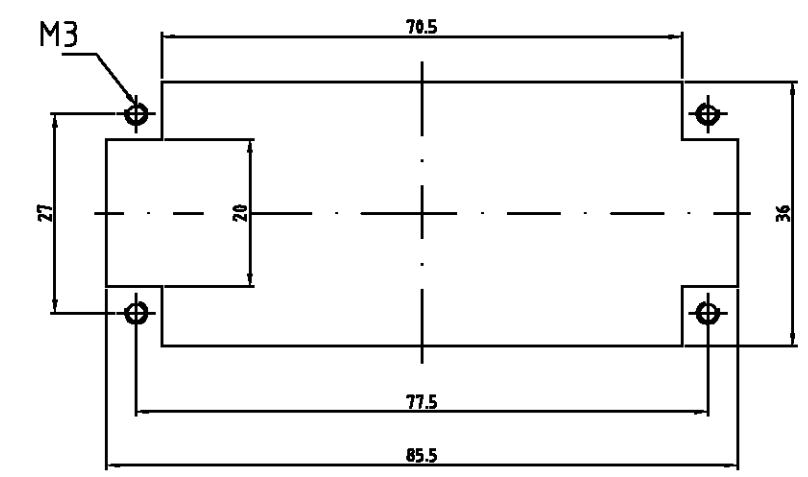
Kontaktanordnung Ansicht Anschlußseite
Contact arrangement view from termination side



- Notes,
- ⚠ Material, insert: PC
UL-File Nr.: E101788(R)
 - ⚠ Material contact: Fe
 - ⚠ Material contact: CuNi
Konstantan
 - ⚠ Contact Surface:
Silver, Gold
 - ⚠ Strip length:
Screw conection 7mm
Spring clamp conection 10mm
Crimp conection 7.5mm
 - ⚠ Material: cover PBT
UL-File Nr.: E69578

- Bemerkungen,
- ⚠ Material: Einsatz: PC
UL-File Nr.: E101788(R)
 - ⚠ Material Kontakt: Fe
 - ⚠ Material Kontakt: CuNi
Konstantan
 - ⚠ Kontaktoberfläche:
Silber, Gold
 - ⚠ Abisolierlänge :Schraubanschluß 7mm
Federklemmanschluß 10mm
Crimpschluß 7.5mm
 - ⚠ Material: Deckel PBT
UL-File Nr.: E69578

Montageausschnitt bei Verwendung ohne Gehäuse
Panel cut-out for contact insert when used without housing



1-8	9-16	17-24	25-32	DESCRIPTION / BENENNUNG	MATERIAL	COLOR / FARBE	ITEM NO. POS.	REMARKS / BEMERKUNGEN				
-	-	1	1	-	-	-	-	Deckel Federklemmversion	⚠	lichtgrau	4	
-	-	-	1	1	-	-	-	Deckel Crimpversion	⚠	lichtgrau	3	
1	1	-	-	-	1	1	1	Deckel Schraubversion	⚠	lichtgrau	2	
1	1	1	1	1	1	1	1	Buchseinsatz	⚠	lichtgrau	1	

HE.16.Bu.S.-T.B.8+4+4	HE.16.Bu.S.B.1-16-AU	HE.16.Bu.S.C.B.17-32	HE.16.Bu.S.C.B.1-16	HE.16.Bu.C.B.17-32	HE.16.Bu.C.B.1-16	HE.16.Bu.S.B.17-32	HE.16.Bu.S.-T.B.1-16	HE.16.Bu.S.B.1-16
-----------------------	----------------------	----------------------	---------------------	--------------------	-------------------	--------------------	----------------------	-------------------

DWN	Schneider	08.02.2000
CHK	Schweiger	08.02.2000
NAME	HTS Elektrotechnik 53819 Neunkirchen, Germany	
PRODUCT SPEC	Female insert Buchseinsatz HE.16.BU	
APPLICATION SPEC	-	
WEIGHT	-	
CUSTOMER DRAWING	/KUNDENZEICHNUNG	