

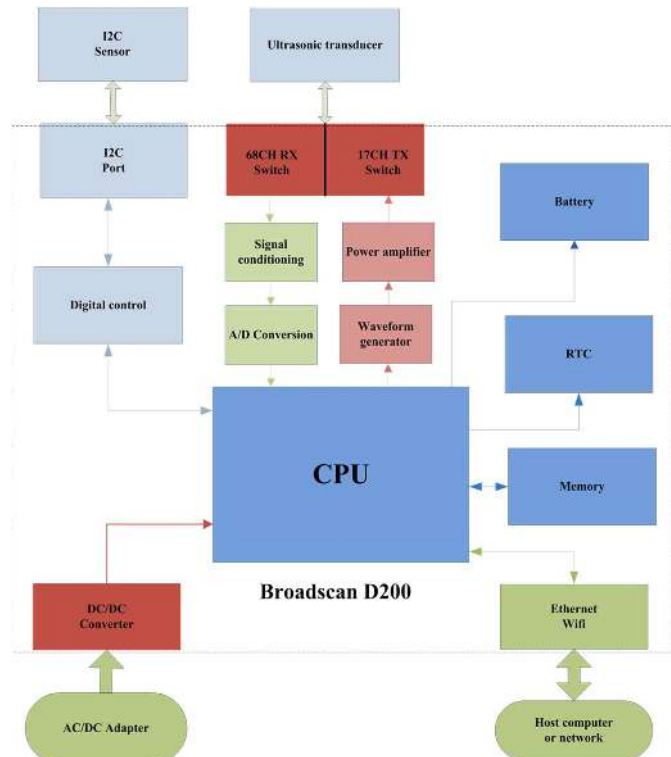
BroadScan D200 is a high resolution ultrasonic scanner that is designed for Structural Health Monitoring (SHM). It has 16 transmission channels and 16 receive channel. It has easy connection plug and supports most piezoelectric ultrasonic transducers. BroadScan D200 can generate high frequency and high voltage ultrasonic excitation signals such as lamb waves for structural integrity scan.

BroadScan D200 has integrated data storage and processing ability. History data can be reviewed and compared to find out structural changes/defects with respect to time. D200 can be used for metal and composite structures.



智能超声波扫描设备 D200

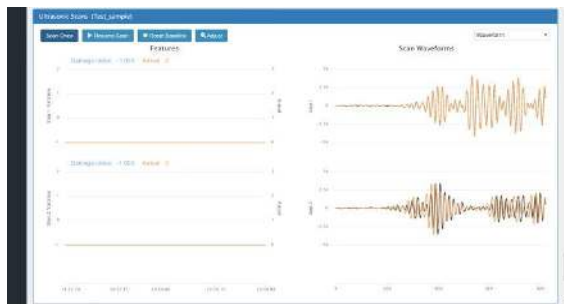
Parameters	Description
No. of channels	16 transmit, 16 receive
Excitation signal type	14bit DAC arbitrary waveform generator
Excitation signal frequency	50kHz-5MHz adjustable
Excitation signal voltage	1v-140v pk-pk adjustable
Filtering	Integrated high-pass and low-pass filter
Data acquisition	14-bit ADC
Input gain	20db-80db adjustable
Sampling rate	80 MS/s, 40 MS/s, 20 MS/s, 10 MS/s, 5 MS/s, 2.5 MS/s and 1.25 MS/s selectable
Sampling points	1024, 2048, 4096, 8192, 16384, 32768 selectable
Digital interface	I2C interface, supports Broadsens digital sensors
CPU speed	1.2GHz Arm quad processor
RAM	1GB
Data storage	32GB MicroSD
Software	Basic Broadview software
Web access	Browser
Sensor interface	Plug, Female Sockets
Working temperature	-20-65 °C
Size	107x220x42mm (DxWxH)
Weight	2 lbs



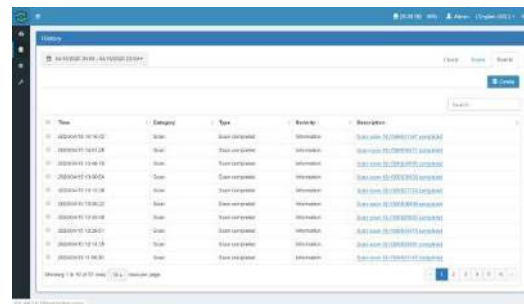
## Advantages of BroadScan D200

- High resolution
- High performance
- Wide dynamic range
- High sampling rate
- Long transmission distance
- Integrated damage detection
- Supports digital sensors
- 3D structure display (special order)
- Large local data storage
- Compact design
- Light weight
- Power efficient
- Easy connection
- Easy operation
- Alarm setup
- Integrated web server
- Easy expansion
- Localized data processing

## Broadview Monitoring software



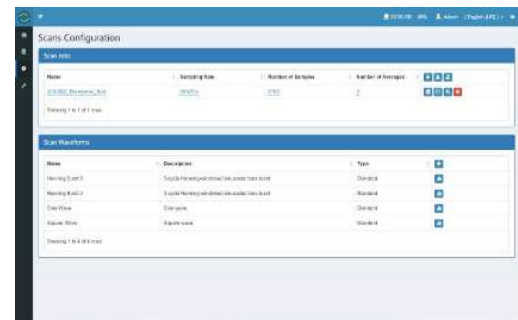
Waveform comparison



Integrated data storage



Integrated hardware filter



Parameter adjustment

- Multiple area scan
- Environment compensation
- Damage index
- History data review
- Sensor status monitoring

- Multiple path setup
- Delayed scan
- Timed scan
- Adjustable gain
- Adjustable excitation and receive signal

**“Broadsens, sense the broader world”**

Website: [www.broadsens.com](http://www.broadsens.com)

Sales: [sales@broadsens.com](mailto:sales@broadsens.com)

Support: [support@broadsens.com](mailto:support@broadsens.com)

### USA Headquarter

. 1601 McCarthy Blvd, Milpitas, CA, 95035

### China Offices

. 1707-A066, No.9 North Fourth Ring West Rd, Beijing

. Rm 803, No.152, Huixin Rd, Nanhu District, Jiaxing