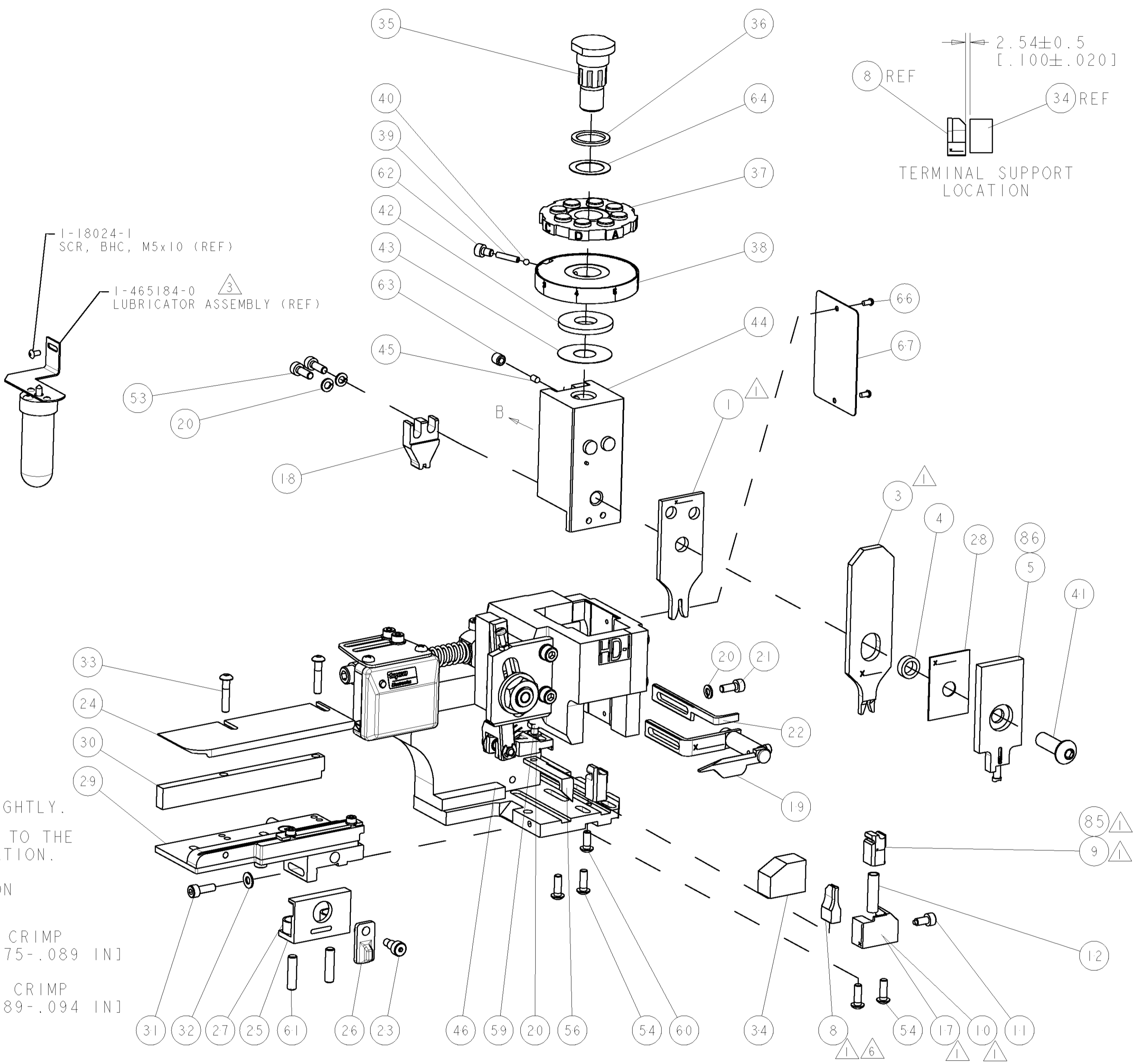
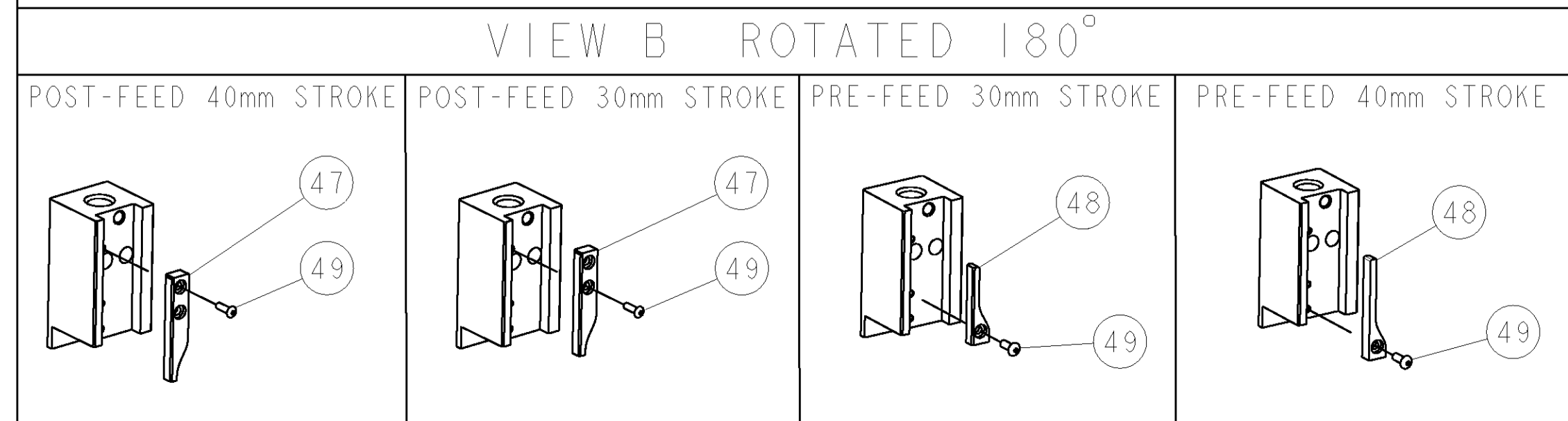


PART NUMBER	REV	TERMINATOR	FEED TYPE	DESCRIPTION
1426512-1	C	LEADMAKER	MECH POST FEED	CUTS CARRIER
1426512-2	C	BENCH	MECH PRE FEED	CUTS CARRIER
1426512-6	C	LEADMAKER	MECH POST FEED	CONTINUOUS CARRIER
7-1426512-1	C	LEADMAKER	MECH POST FEED	-1 AND SPARE PARTS
7-1426512-2	C	BENCH	MECH PRE FEED	-2 AND SPARE PARTS
7-1426512-6	C	LEADMAKER	MECH POST FEED	-6 AND SPARE PARTS
7-1426512-7	B	-	-	SPARE PARTS KIT

CRIMP DATA		TE TERMINAL		TE CRIMP SPECS	
TERMINAL NAME: MCP 1.2MM CONTACT ASSEMBLY					
CRIMP	SIZE	TYPE	RANGE		
WIRE	1.78 [1.070 IN]	F	1.00-1.50mm ² or 18-16 AWG		
INSUL	2.29 [1.090 IN]	SPECIAL	1.90-2.40 [1.075-.094 IN]		
WIRE STRIP LENGTH 3.30-3.90 [1.130-.154 IN]		APPL INSTRUCTIONS 408-8322			
TERMINAL APPL SPEC 114-18464		FEED 8.00 [3.15 IN]			
TERMINALS APPLIED					
1418762	-	-	-	-	-
-	-	-	-	-	-
-	-	-	-	-	-
-	-	-	-	-	-
-	-	-	-	-	-
WIRE SIZE	CRIMP HEIGHT	PINPN & LENGTH [IN]			
1.50mm ²	1.31 ± 0.05 [1.052 ± .002 IN]	1-354779-7 [3.3075]			
16 AWG	1.26 ± 0.05 [1.050 ± .002 IN]	2-354779-2 [3.3100]			
1.00mm ²	1.10 ± 0.05 [1.043 ± .002 IN]	3-354779-4 [3.3160]			
18 AWG	1.05 ± 0.05 [1.041 ± .002 IN]	3-354779-9 [3.3185]			

- △ RECOMMENDED SPARE PARTS.
- 2. GREASE RAM, CAM, CAM FOLLOWER AND FEED ROD LIGHTLY.
- △ CERTAIN TERMINALS REQUIRE LUBRICATION. REFER TO THE APPLICATOR INSTRUCTION SHEET FOR MORE INFORMATION.
- 4. LUBRICATE DAILY PER THE APPLICATOR INSTRUCTION SHEET SUPPLIED WITH THE APPLICATOR.
- △ MAXIMUM INSULATION CRIMP WIDTH AND INSULATION CRIMP HEIGHT OF 2.45mm. WHEN APPLYING 1.90-2.25 [1.075-.089 IN] INSULATION DIAMETER.
MAXIMUM INSULATION CRIMP WIDTH AND INSULATION CRIMP HEIGHT OF 2.55mm. WHEN APPLYING 2.25-2.40 [1.089-.094 IN] INSULATION DIAMETER.
SEE APPLICATION SPECIFICATION TO CLARIFY.
- △ DUE TO THE DEMANDS OF APPLICATION SPEC 114-18464 IT IS IMPORTANT, IF THE ANVIL IS MOVED OR REPLACED, THAT IT IS BIASED TOWARDS THE OPERATOR'S POSITION AS FAR AS POSSIBLE WHEN RE-SECURING TO THE BASE PLATE.
- 7. TOOLING APPROVED BY GB GATD & TERMINAL PRODUCT ENGINEERING GERMANY.



LOC	DIST	REV	DATE	BY	APPV
A	66	B	05SEP2008	JLJ	MC
		C	28OCT2008	DM	GB

ITEM NO	DESCRIPTION	DATE	BY	APPV
73				
72				
71	DOCUMENTATION PACKAGE			
70				
69				
68				
67	PLATE, IDENTIFICATION			
66	SCREW, DRIVE			
65				
64	WASHER, FLAT PRECISION			
63	SCR, SET, CUP POINT M6 X 6.0			
62	SCR, SKT HD CAP M4 X 6.0			
61	SCR, SET, FLT POINT M5 X 20.0			
60	SCR, BTN SKT HD CAP (M4 X 10.0)			
59	SCR, HEX HD CAP M4 X 8.0			
58				
57				
56	PAWL, FEED			
55				
54	SCR, BTN SKT HD CAP (M4 X 12.0)			
53	SCR, SKT HD CAP M4 X 12.0			
52				
51				
50				
49	SCR, BTN SKT HD CAP (M3 X 10.0)			
48	CAM, UNIVERSAL PRE FEED			
47	CAM, UNIVERSAL POST-FEED			
46	APPLICATOR SUBASSEMBLY, HDI			
45	PLUG, NYLON			
44	RAM			
43	SHIM SUB-ASSY			
42	WASHER, RAM (.115)			
41	SCR, BTN SKT HD CAP (M8 X 25.0)			
40	BALL, STEEL			
39	SPRING, COMPRESSION			
38	DISC, ADJUST, INSULATION CRIMP			
37	WIRE DISC, ASSEMBLY			
36	SPRING, COMPRESSION			
35	POST, RAM			
34	SUPPORT, TERMINAL			
33	SCR, BTN SKT HD CAP (M4 X 20.0)			
32	WASHER, FLAT, REG M4			
31	SCR, SKT HD CAP M4 X 12.0			
30	SPACER, STRIP GUIDE			
29	STRIP GUIDE ASSEMBLY			
28	SPACER, CRIMPER			
27	SPRING, COMPRESSION			
26	LEVER, DRAG RELEASE			
25	DRAG, TERMINAL			
24	PLATE, STRIP GUIDE			
23	SCR, SKT HD SHLDR 5.0 DIA X 6.0			
22	STRIPPER			
21	SCR, SKT HD CAP M4 X 10.0			
20	WASHER, SPRG LOCK, REG M4			
19	STRIPPER/WIRE STOP ASSY			
18	HOLD DOWN			
17	SHEAR HOLDER, FRONT			
16				
15				
14				
13				
12	SPRING, COMPRESSION			
11	STOP, SHEAR			
10	SHEAR HOLDER, FRONT, CUT			
9	FLOATING SHEAR, FRONT			
8	ANVIL, COMBINATION			
7				
6				
5	DEPRESSOR, SHEAR			
4	BLOCK, CRIMPER SPACER			
3	CRIMPER, INSULATION, SPECIAL			
2				
1	CRIMPER, WIRE, SPECIAL			

ITEM NO	DESCRIPTION	ITEM NO
86	SHEAR DEPRESSOR	86
85	FLOATING SHEAR, FRONT	85
84		84
83		83
82		82
81		81
80		80
79		79
78		78
77		77
76		76
75		75
74		74
73		73
72		72
71		71
70		70
69		69
68		68
67		67
66		66
65		65
64		64
63		63
62		62
61		61
60		60
59		59
58		58
57		57
56		56
55		55
54		54
53		53
52		52
51		51
50		50
49		49
48		48
47		47
46		46
45		45
44		44
43		43
42		42
41		41
40		40
39		39
38		38
37		37
36		36
35		35
34		34
33		33
32		32
31		31
30		30
29		29
28		28
27		27
26		26
25		25
24		24
23		23
22		22
21		21
20		20
19		19
18		18
17		17
16		16
15		15
14		14
13		13
12		12
11		11
10		10
9		9
8		8
7		7
6		6
5		5
4		4
3		3
2		2
1		1

DIMENSIONS:	TOLERANCES UNLESS OTHERWISE SPECIFIED:	DATE	BY	APPV
mm [IN]	0 PLC ±.125	05SEP2008	JLJ	MC
	1 PLC ±.250			
	2 PLC ±.375			
	3 PLC ±.500			
	4 PLC ±.625			
	ANGLES ±.125			
MATERIAL:	FINISH:	WEIGHT:	CUSTOMER DRAWING	
			SCALE 3:5 SHEET 1 OF 1 REV C	