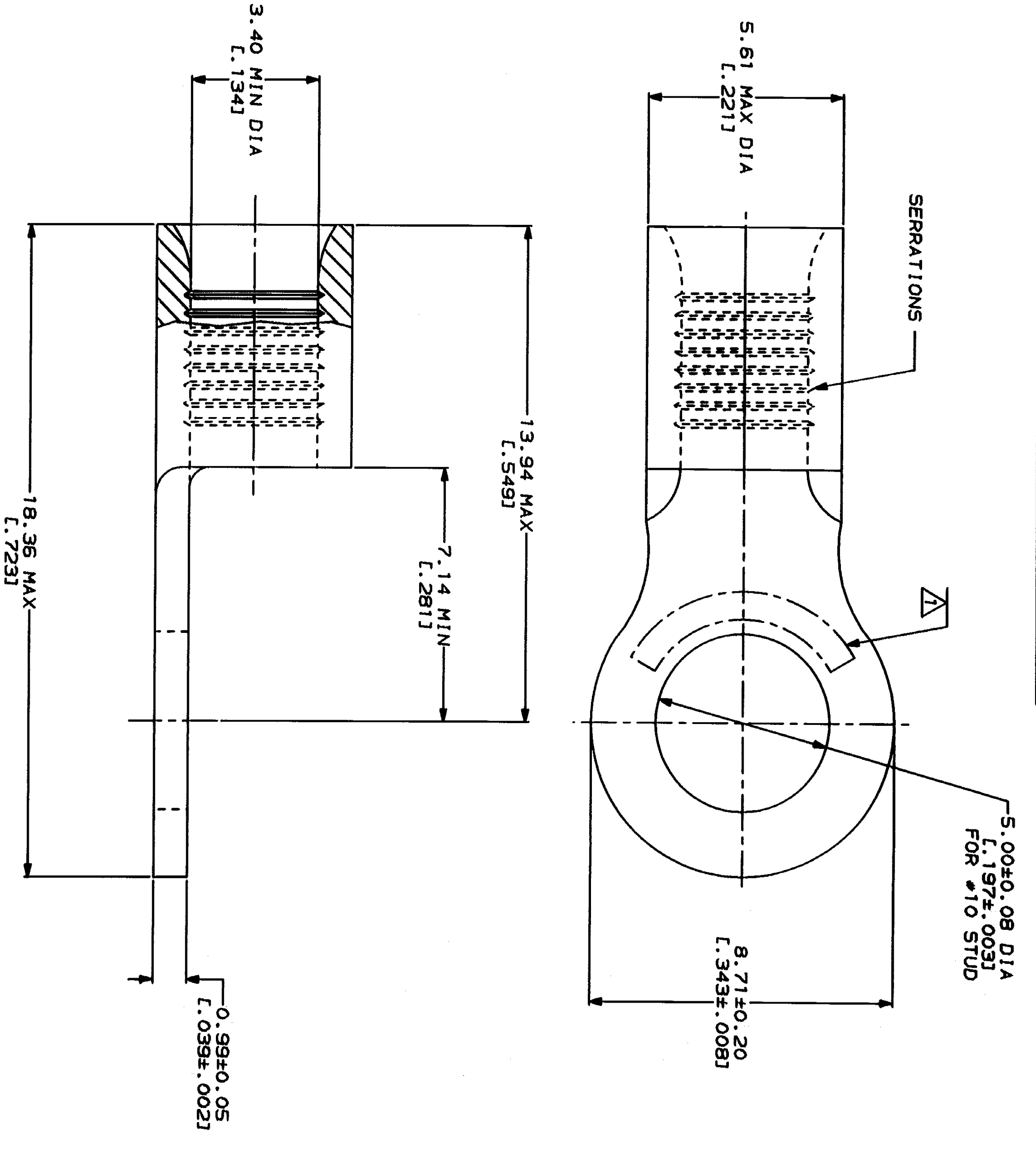


LOC	DIST	REV	DATE	APPD
G	14	A	REVISED PER 0720-0230-93	

METRIOR
 DIMENSIONS LISTED IN mm [INCHES]

AMP WIRE RANGE	UL E13288 Listed
12-10 AWG STRANDED	12-10 AWG STRANDED
LR7189 Certified	MILITARY P/N AND CLASS
NOT CERTIFIED	NOT APPLICABLE

△ STAMP AMP 12-10* APPROX AS SHOWN



AMP INCORPORATED
 CUSTOMER SERVICE SYSTEMS

FOR ADDITIONAL
 PRODUCT INFORMATION OR
 COPIES OF DRAWINGS
 AND TECHNICAL DOCUMENTS
 1-800-522-6752
 PRODUCT INFORMATION CENTER

FOR APPLICATION
 TOOLING INFORMATION
 1-800-722-1111
 TOOLING ASSISTANCE CENTER

FOR ORDER ENTRY
 1-800-526-5142

MAX RECOMMENDED OPERATING
 TEMPERATURE:
 170°C MAX

VOLTAGE RATING:
 NOT APPLICABLE

WIRE CROSS SECTIONAL AREA RANGE:
 2.62-6.64mm² [5.180-13.100] CIR MILS
 STRANDED

DO NOT SCALE PRINT. UNLESS SPECIFIED DIMENSIONS IN - FINISHES - TOLERANCES ON 1 2 PL DEC ± 3 PL DEC ± ANGLES ± PATTERNAL	DR 2-9-93 TA BRINKMAN	NAME AMP AMP Incorporated Harrisburg, PA 17105-3608
FINISH TIN PLATE 0.00254L.0001001 MIN THK PER MIL-T-10727	CHK 2-9-93 DA PATTERSON	TERMINAL, RING TONGUE, BUDGET
APPRO 2-9-93 DE MILLER	APPRO 2-9-93 JL HECKLEY	SIZE CAGE CODE DRAWING NO C 00779 G-32882
APPRO 2-9-93 JL HECKLEY	PRODUCT SPEC	SCALE 10:1
APPRO 2-9-93 JL HECKLEY	APPLICATION SPEC	SHEET 1 OF 1
APPRO 2-9-93 JL HECKLEY	WEIGHT	CUSTOMER DRAWING

32882
 PART NO