



7-Inch Smart Display (Powered by SSD202 SoC)

SKU 102110551

The 7-inch smart display features an ultra-small SoM (System on Module) module based on SigmaStar SSD202 SoC (ARM Cortex A7 processor), with a frequency up to 1.2GHz, 256KB L2-Cache, built-in dual MAC, one PHY, and supporting dual 100M Ethernet interfaces.

PRODUCT DETAILS

Features

- Powered by SSD202 SoC running at up to 1.2GHz
- Supports 1920x1080 at 60 fps with H.265/HEVC decoder
- DDR2/DDR3 128MB onboard RAM with auto-refresh and self-refresh modes
- 256MB onboard flash and micro-SD card slot for more storage
- Network connectivity using built-in Wi-Fi, Ethernet, and 4G
- Rich I/O peripherals for more connectivity

Description

The 7-inch smart display features an ultra-small SoM (System on Module) module based on SigmaStar SSD202 SoC (ARM Cortex A7 processor), with a frequency up to 1.2GHz, 256KB L2-Cache, built-in dual MAC, one PHY, and supporting dual 100M Ethernet interfaces.

The memory management supports DMA engine. It integrates H.264/AVC and H.265/HEVC decoders and supports max. resolution FHD (1920x1080)/60 fps decode. The 7-inch smart display is equipped with TTL display driver interface, TF card socket, Ethernet, MAC, audio interface, speaker interface, USB2.0, Wi-Fi, and Sim Card Slot.

Specifications

Specification	Details
CPU	SigmaStar SSD202 ARM® Cortex-A7 dual-core processor, up to 1.2GHz
Video Processor	Supports max resolution FHD(1920x1080)/60 fps decode, H.265/HEVC decoder, I/P/B slices, all intra-prediction modes, all inter-prediction modes, supports max resolution HD(1920x1080)/60 fps decode
RAM	Built-in DDR2/DDR3 128MB memory, support auto-refresh and self-refresh modes
Storage	Supports 1/2/4-bit SPI-NOR/SPI-NAND Flash, 256MB
Supported OS	Linux

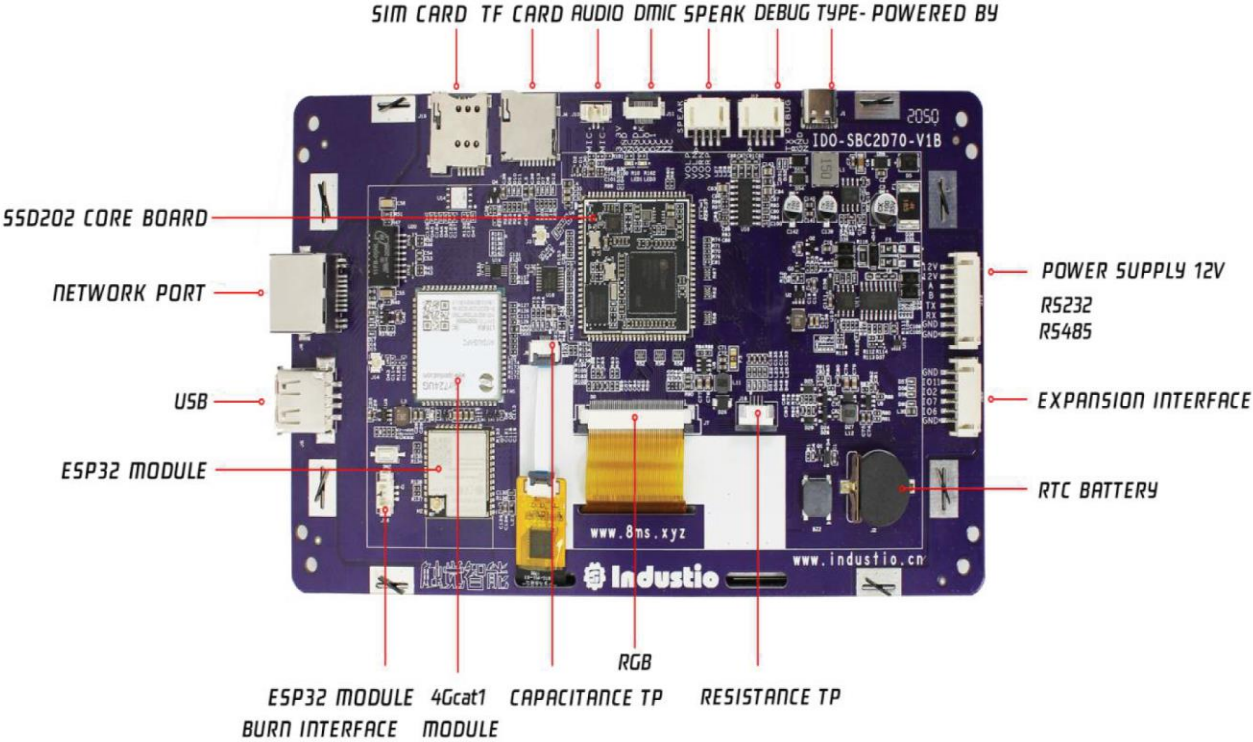
Specification	Details
Ethernet	1-channel 10/100Mbps half duplex/full duplex Ethernet
WIFI	Equipped with Singmaster Wi-Fi chip (SSW101B), with high performance and 500m transmission distance in open space
Display	Video output interface: -1 x RGB, support FHD (1920x1080)/60 fps decoding output, with 1024*600 IPS RGB module by default
Audio	1 x left and right channel speaker (PH-4 connector)
Serial port	1x DEBUG (PM_UART) 1 x RS232 1 x RS485
USB	1x USB 2.0 (USB female)
TF card	1 x Micro-SD card (support SDIO2.0)
RTC	1220 button battery, easy to maintain
Extension interface	4 x GPIO
Power input	Default USB Type-C power supply; Optional 4.5~30V DC @1A power supply, rated voltage 12V DC
PCBA dimensions	122mm x 73mm

Specification	Details
Operating temperature	-10~70°C
Storage temperature	-20~85°C

Applications

- Smart building indoor intercom
- Smart home central control
- 86-box family central control
- Elevator floor display
- IP network broadcasting device
- Speech recognition equipment

Hardware Overview

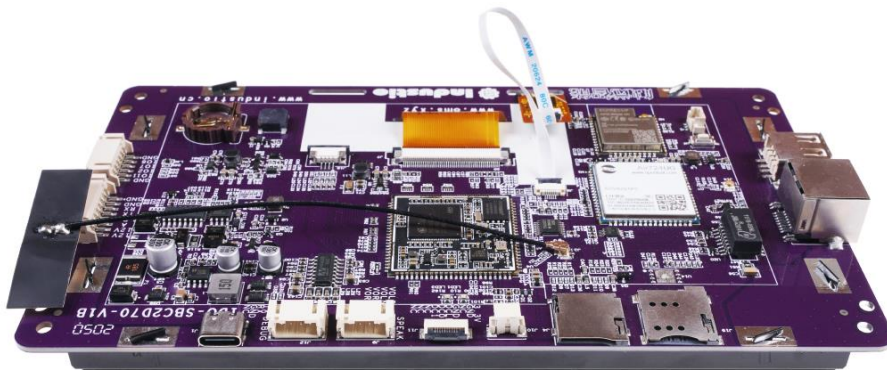
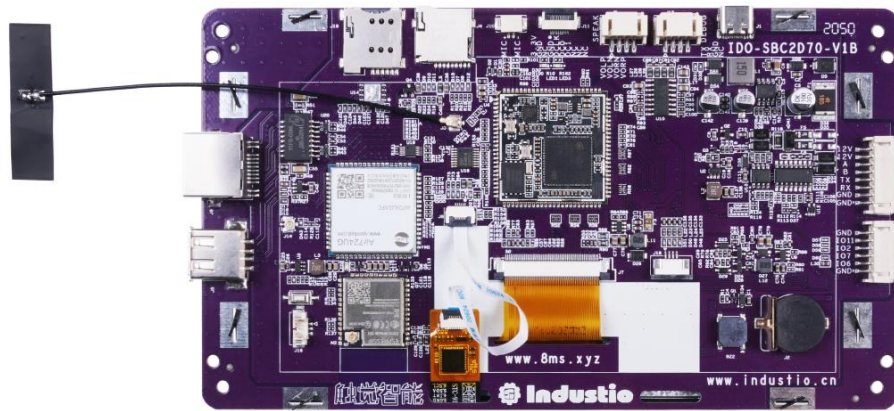


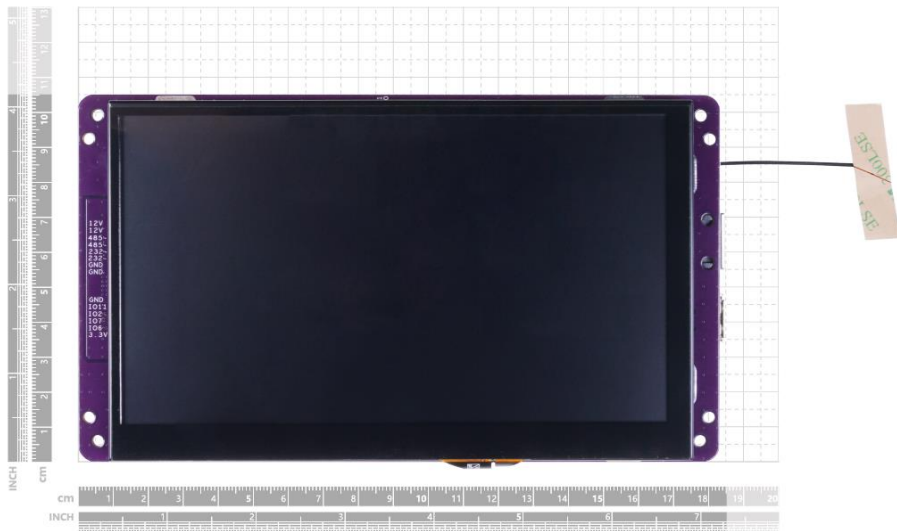
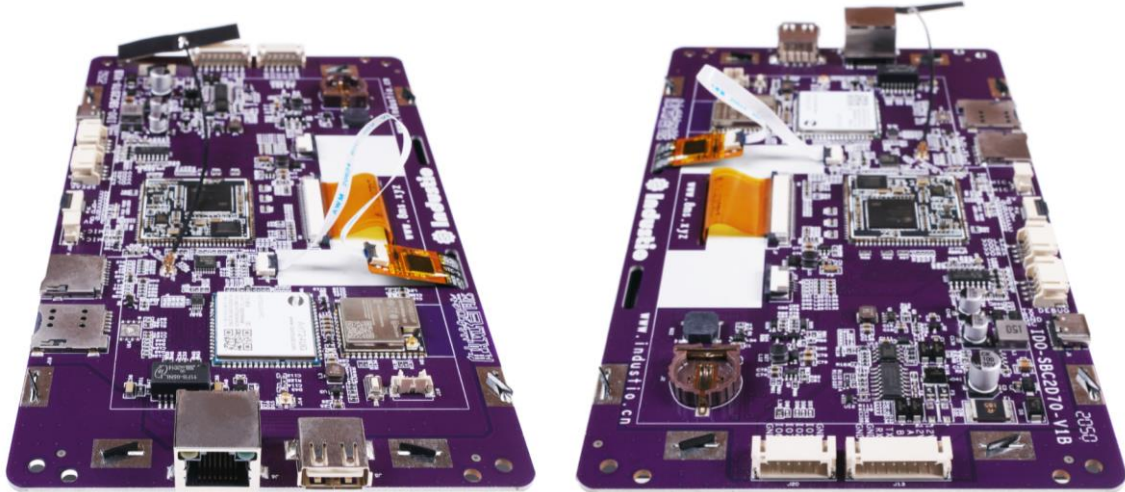
Part List

1 x 7-Inch Smart Display (Powered by SSD202 SoC)

ECCN/HTS

HSCODE	8548900030
USHSCODE	8543908885
UPC	





<https://www.seeedstudio.com/SigmastarSSD202-7-inch-Smart-Display-p-4885.html/3-15-22>