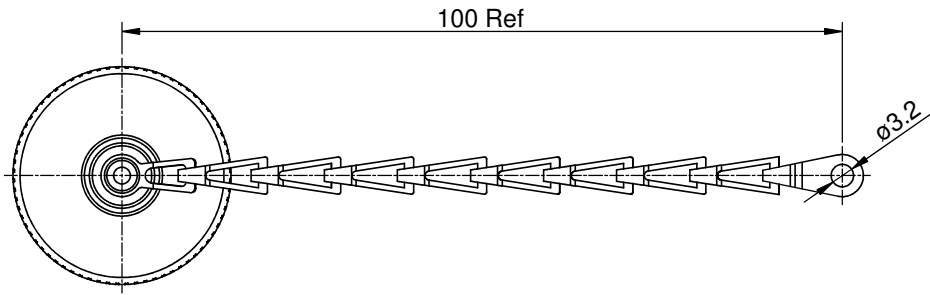
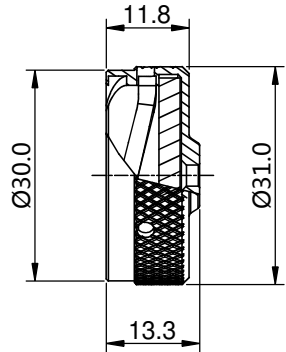


REVISIONS					
REV	ECO	DESCRIPTION	DATE	BY	APPR
B1	-	RELEASED DRAWING	JUN-23-2014	BEN	TOMMY



RT016DC X X
① ②

P/N	①	②	CHAIN	PLATING
RT016DC	---	---	NO CHAIN	NICKEL PLTING
RT016DCA	---	A	NO CHAIN	BLACK ANODIZING
RT016DCG	G	---	CHAIN	NICKEL PLTING
RT016DCGA	G	A	CHAIN	BLACK ANODIZING

- NOTES : (UNLESS OTHERWISE SPECIFIED)**
- MATERIAL :**
RIVET : COPPER ALLOY,NICKEL PLATING
CHAIN : STAINLESS STEEL.
DUST CAP : AL ALLOY , NICKEL PLATED.
O-RING : NBR.
 - SPECIFICATIONS :**
 - 2.1 OPERATING TEMPERATURE : -40°C ~ +105°C.**
 - 2.2 IP--CLASS : IP67.**
 - 2.3 MATING CYCLES DURABILITY : 500 CYCLES MIN.**
 - 2.4 ROHS COMPLIANT.**
 - 3. ALL DIMENSIONS ARE FOR REFERENCE USE ONLY.**

SEE PART NUMBER CHART			
QUANTITY	PART NUMBER	DESCRIPTION	ITEM
MATERIALS LIST			
UNLESS OTHERWISE SPECIFIED 1) All dimensions are in metric(mm). 2) Tolerances are as follows: 1 PL DEC ±0.30 Fractions: ±1/64 2 PL DEC ±0.15 Angles: ±1° 3 PL DEC ±0.08 3) Note reference =		SIGNATURES DRAWN: BEN CHECKED: ENGINEER: APPROVAL:	DATE JUN-23-2014
MATERIAL SPECIFICATIONS:		Amphenol	
PROCESS SPECIFICATIONS:		Sine Systems - www.amphenol-sine.com 44724 Morley Drive Clinton Township, MI 48036	
NEXT ASSY:		ECO-MATE,DUSTCAP FOR RECEPTACLES,SIZE 16	
		SIZE B C-	TYPE NONE
		DWG NO: RT016DCxx	REVISION B1
		SHEET 1 OF 1	

TITLE: ECO-MATE,DUSTCAP FOR RECEPTACLES,SIZE 16
DWG NO: RT016DCXX
REV: B1
SH: 1
OF: 1