

VIEW ON MATING SIDE

⊙	A	A	A	A	A	A	A	A	A	A	A	A	A	A	A	A	A	A	A	A	A	A	A	A	A	A	A	A	A	A	A	A	A	A	A
⊙	A	A	A	A	A	A	A	A	A	A	A	A	A	A	A	A	A	A	A	A	A	A	A	A	A	A	A	A	A	A	A	A	A	A	A
⊙	A	A	A	A	A	A	A	A	A	A	A	A	A	A	A	A	A	A	A	A	A	A	A	A	A	A	A	A	A	A	A	A	A	A	A
-	1	2	3	4	5	6	7	8	9	10	11	12	13	14	15	16	17	18	19	20	21	22	23	24	25	26	27	28	29	30	31	32			

A = 96 STANDARD CONTACTS L = 4.5

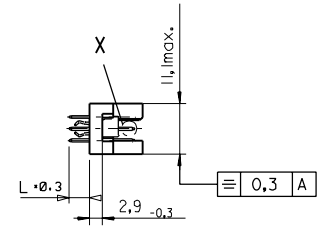
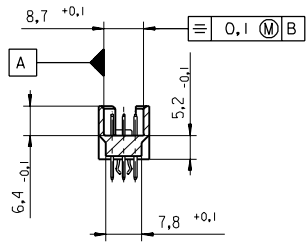
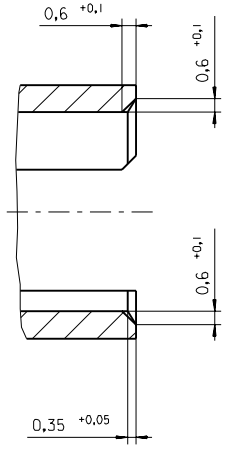
MARKING	STANDARD
PERFORMANCE LEVEL	G/O = CONTACT AREA LEVEL I / TERMINATION TIN
FLUX PROOF	NO
FIXING CLIP	NO
DIMENSIONS	SD-85013-0001 SHT 1

A	G/O	a1-32 b1-32 c1-32
CONTACT SYMBOL	PERFORMANCE LEVEL	CONTACT POSITION NUMBER

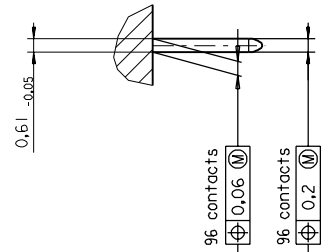
EC NO. 1 2004-XXXX DRAWN N.S. 31/03/04 CHK'd G.L. 31/03/04 APPR'd G.L. 31/03/04	QUALITY SYMBOLS MAJOR CRITICAL	GENERAL TOLERANCES: (UNLESS SPECIFIED)	SCALE	DESIGN UNITS	THIRD ANGLE PROJECTION	DIMENSIONS:	SHT	REV	
		4 PLACES	mm	INCH	<input checked="" type="checkbox"/> MM <input type="checkbox"/> INCH	<input type="checkbox"/> MM <input type="checkbox"/> INCH	<input type="checkbox"/> MM <input checked="" type="checkbox"/> INCH ONLY	1	
		3 PLACES	$\pm 0.$	$\pm .$	DRAWN BY & DATE N.S. 01/06/01	TITLE: 96 POS MALE CONNECTOR			REVISE ON CAD ONLY
		2 PLACES	$\pm 0.$	$\pm .$	CHECKED BY & DATE G.L. 01/06/01	ACCORDING DIN 41612 STYLE R			
		1 PLACE	$\pm 0.$	$\pm .$	APPROVED BY & DATE G.L. 01/06/01	CONTACTS ARRANGEMENT			
		ANGULAR: \pm	*	CAD FILENAME	MATERIAL NO.	DRAWING NO.			
				S850130438.S01	85013-0438	SD-85013-0438			SHEET NO.
		DRAFT WHERE APPLICABLE MUST REMAIN WITHIN DIMENSIONS	THIS DRAWING CONTAINS INFORMATION THAT IS PROPRIETARY TO MOLEX INCORPORATED AND SHOULD NOT BE USED WITHOUT WRITTEN PERMISSION.						1 OF 1
									SIZE D

PART NO.
DWG. NO.

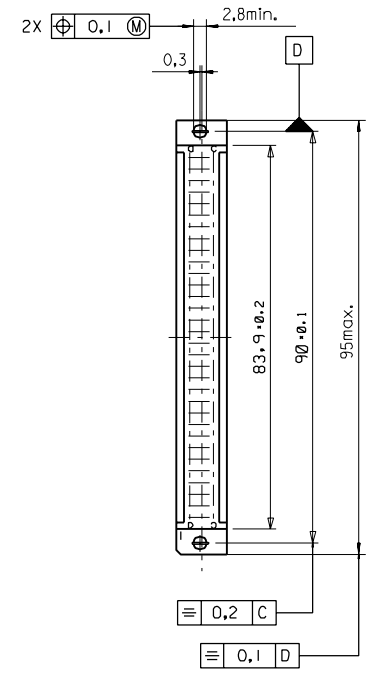
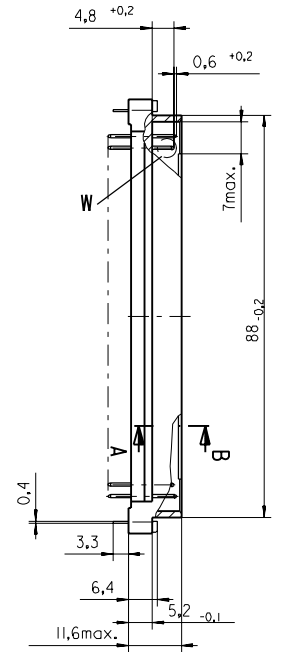
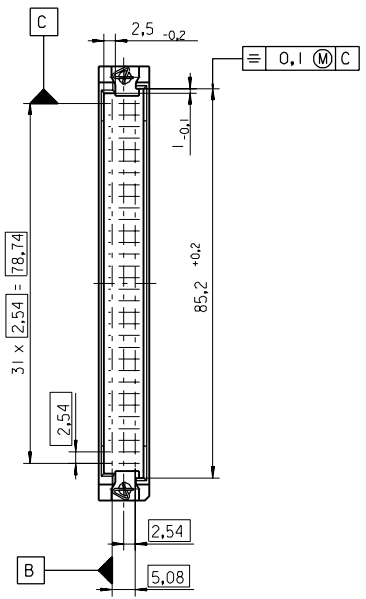
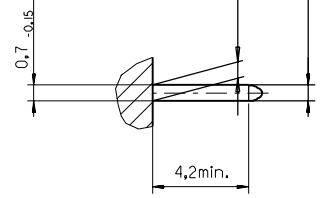
Section A - B
5:1



View X
5:1



View W
5:1



FIRST ANGLE PROJECTION		REVISE ONLY ON CAD SYSTEM		SH.	REV.
UNLESS OTHERWISE SPECIFIED TOLERANCES: ANGULAR ±2°	INCH	DRWG BY	SIGN	CAD/CAM PROJECT NAME	
	METRIC	Ca		85013000 611	
3 PLACE ± . . ±		CHK'D BY	SIGN	TITLE	
2 PLACE ± . ±		KN		96 pos. Male connector acc. DIN 41612 Style R Dimensions	
1 PLACE ± . ±		APP'D BY	SIGN	SHEET NO. DATE	
DRAFT WHERE APPLICABLE MUST REMAIN WITHIN DIMENSIONS				1 OF 95/06/07	
DESIGN DIMENSION <input checked="" type="checkbox"/> MM		SCALE		MOLEX EUROPE	
EQUIVALENT DIMENSION <input type="checkbox"/> MM		! : 1		PART NO. DWG NO. SIZE	
IF TWO DIMENSIONS ARE SHOWN THE UPPER IS THE DESIGN DIMENSION, LOWER IS SECONDARY				SDA-85013-0001 B	

VIEW ON MATING SIDE

∩	A	A	A	A	A	A	A	A	A	A	A	A	A	A	A	A	A	A	A	A	A	A	A	A	A	A	
∩	A	A	A	A	A	A	A	A	A	A	A	A	A	A	A	A	A	A	A	A	A	A	A	A	A	A	A
∩	A	A	A	A	A	A	A	A	A	A	A	A	A	A	A	A	A	A	A	A	A	A	A	A	A	A	A

1 2 3 4 5 6 7 8 9 10 11 12 13 14 15 16 17 18 19 20 21 22 23 24 25 26 27 28 29 30 31 32 33 34 35 36 37 38 39 40 41 42 43 44 45 46 47 48 49 50 51 52 53 54 55 56 57 58 59 60 61 62 63 64 65 66 67 68 69 70 71 72 73 74 75 76 77 78 79 80 81 82 83 84 85 86 87 88 89 90 91 92 93 94 95 96 97 98 99 100

A = 96 STANDARD CONTACTS L=4,5

Marking	Standard
Performance level	G1/0 = Contact area perform. level / Termination tin
Flux proof	no
Fixing clip	no
Dimensions	SDA-85013-0001 sht.1
Technical Data	PS-85013-0001

A	G1/0	a1-32	b1-32	c1-32
Contact symbol	Perform. level	Contact position number		

first release see ECN No. 1868	REVISIONS	FOR PREVIOUS REVISIONS SEE MRI LIST
▷	LTR	

UNLESS OTHERWISE SPECIFIED TOLERANCES: ANGULAR ± 2° INCH METRIC 3 PLACE ± . ± 2 PLACE ± . ± 1 PLACE ± . ± DRAFT WHERE APPLICABLE MUST REMAIN WITHIN DIMENSIONS DESIGN DIMENSION <input type="checkbox"/> MM <input type="checkbox"/> IN. EQUIVALENT DIMENSION <input type="checkbox"/> MM <input type="checkbox"/> IN. IF TWO DIMENSIONS ARE SHOWN, THE UPPER IS THE DESIGN DIMENSION, LOWER IS SECONDARY	DRWG BY Ca	SIGN	CAD/CAM PROJECT NAME s8501304 s31	REVISE ONLY ON CAD SYSTEM	SH. REV.
	CHK'D BY KN	SIGN	TITLE 96 pos. Male connector acc. DIN 41612 style R contacts arrangement	SHEET NO. 1 OF 1	DATE 95/06/07
APPD BY	SIGN	MOLEX INC. & SHOULD NOT BE USED WITHOUT WRITTEN PERMISSION		PART NO.	SIZE
SCALE	MOLEX EUROPE			SDA-85013-0438	A
MOLEX EUROPE			85013-0438	DWG NO.	