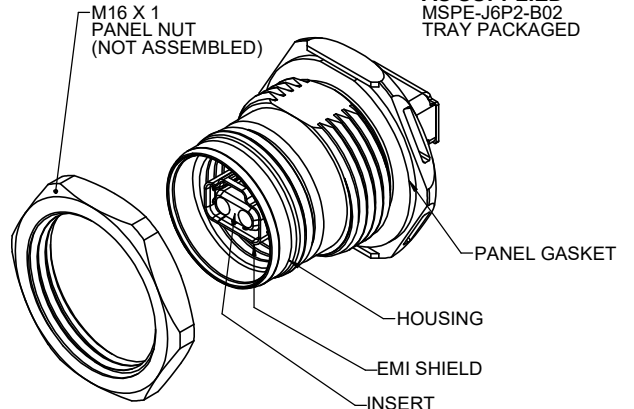
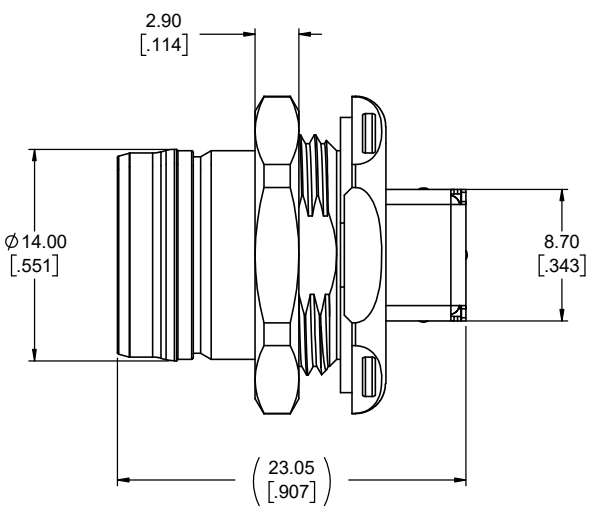
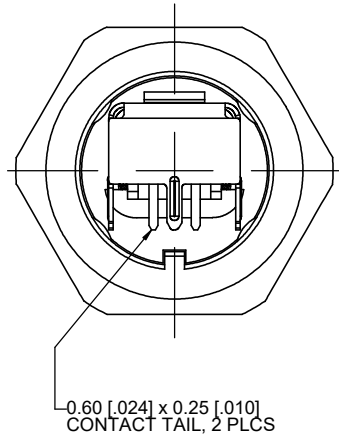
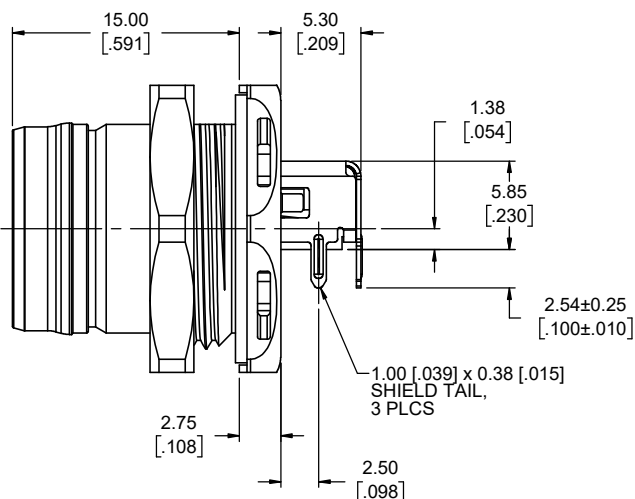
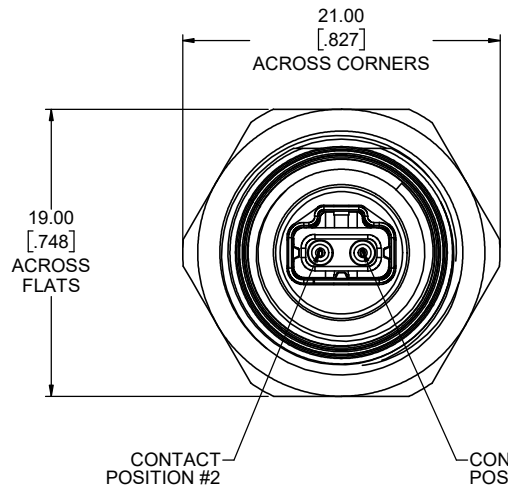




REVISIONS			
REV	DESCRIPTION, ECN, EAR NO.	DATE	APP'D
A	PRODUCT DRAWING (EAR 15028)	DEC14/21	K.L.
B	PRODUCT DRAWING (EAR 15097)	MAR30/22	K.L.



**JACK COMPONENTS AS SUPPLIED**  
MSPE-J6P2-B02 TRAY PACKAGED



**NOTES:**

- MATERIALS: ALL MATERIALS ARE RoHS COMPLIANT PER EU DIRECTIVE 2011/65/EU AND AMENDMENTS.
  - HOUSING: DIECAST ZINC ALLOY PLATED WITH NICKEL OVER COPPER
  - INSERTS: ENGINEERING THERMOPLASTIC, UL94V-0 FLAMMABILITY RATING, COLOUR: BLACK
  - EMI SHIELD & REAR SHIELD: STAINLESS STEEL PLATED WITH MATTE TIN OVER NICKEL
  - CONTACTS: COPPER ALLOY PLATED WITH NICKEL OVERALL, 0.76µm (30µ") GOLD ON THE MATING AREA, AND MATTE TIN ON THE TAILS
  - PANEL GASKET : SILICONE RUBBER, COLOUR: BLACK
  - PANEL NUT: BRASS ALLOY PLATED WITH NICKEL
- DESIGNED IN ACCORDANCE WITH IEC STANDARD 63171-6 & 61076-2-010. COMPATIBLE WITH:
  - IEEE 802.3cg, 10BASE-T1L & -T1S
  - IEEE 802.3bw, 100BASE-T1
  - IEEE 802.3bp, 1000BASE-T1
  - IEEE 802.3bu, POWER OVER DATA LINES (PoDL)
- ENVIRONMENTAL CHARACTERISTICS:
  - OPERATING TEMPERATURE: -40°C TO +85°C
  - IP67 RATED PERFORMANCE PER IEC 60529 IN MATED CONDITION
- ELECTRICAL CHARACTERISTICS:
  - CURRENT RATING: 4A
  - VOLTAGE RATING: 60VDC MAX
  - CONTACT RESISTANCE: 20mΩ MAX
  - DIELECTRIC WITHSTANDING VOLTAGE:
    - 1000VDC CONTACT TO CONTACT
    - 2250 VDC CONTACT TO SHIELD

**AMPHENOL P/N: MSPE-J6P2-B02**

THIS DOCUMENT CONTAINS PROPRIETARY INFORMATION AND SUCH INFORMATION MAY NOT BE DISCLOSED TO OTHERS FOR ANY PURPOSE OR USED FOR MANUFACTURING PURPOSES WITHOUT WRITTEN PERMISSION FROM AMPHENOL CANADA CORP.

UNLESS SPECIFIED OTHERWISE	DRAWN T. TRAN	OCT07/21
PRIMARY UNITS MILLIMETRES	CHECKED K. LAMBIE	DEC14/21
SECONDARY INCHES	M.E. APP'D	
REFERENCE IN PARENTHESES	Q.A. APP'D	
GENERAL TOLERANCES	DWG APPR.	
1 DECIMAL PLACE	ENG. REL. NO.	EAR 15028
2 DECIMAL PLACES ±0.15	REF.	
3 DECIMAL PLACES	THIRD ANGLE PROJECTION	DO NOT SCALE DRAWING
ANGULAR DEGREES		

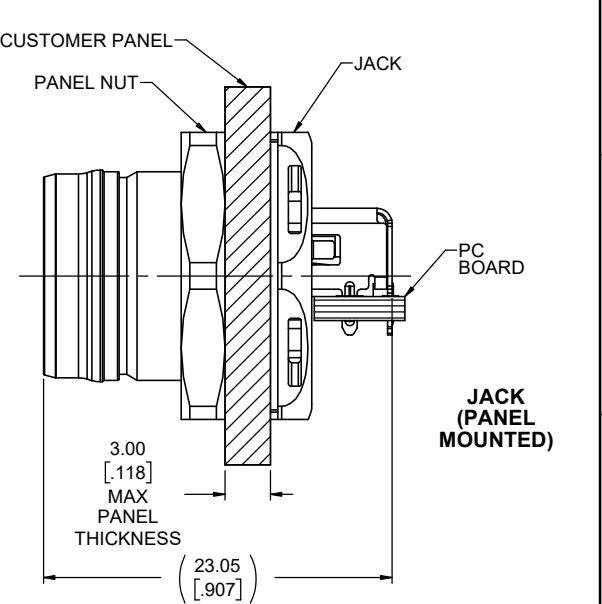
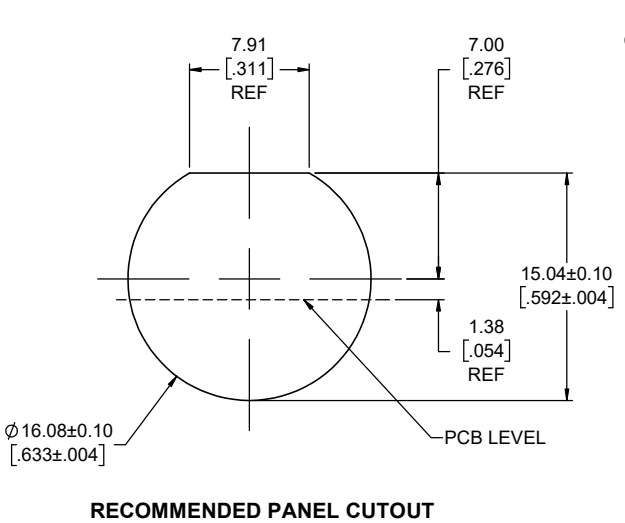
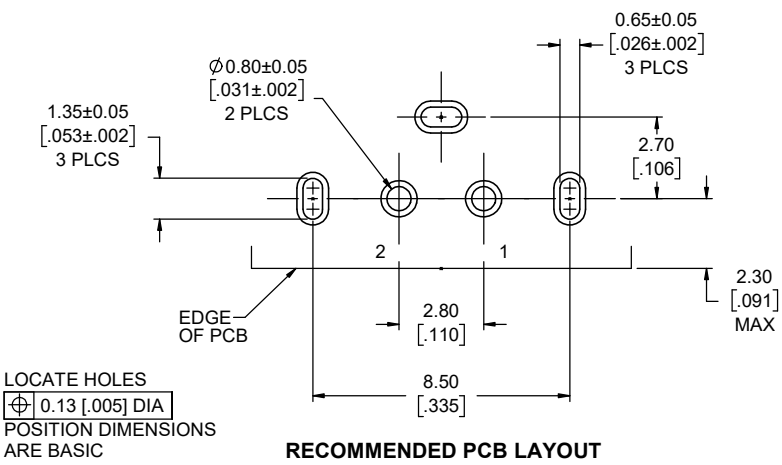
**Amphenol Canada Corp.**  
Commercial Products

MSPE SERIES, SINGLE PAIR ETHERNET, IP67 JACK, PUSH/PULL, RIGHT ANGLE PCB TERMINATION, RoHS COMPLIANT

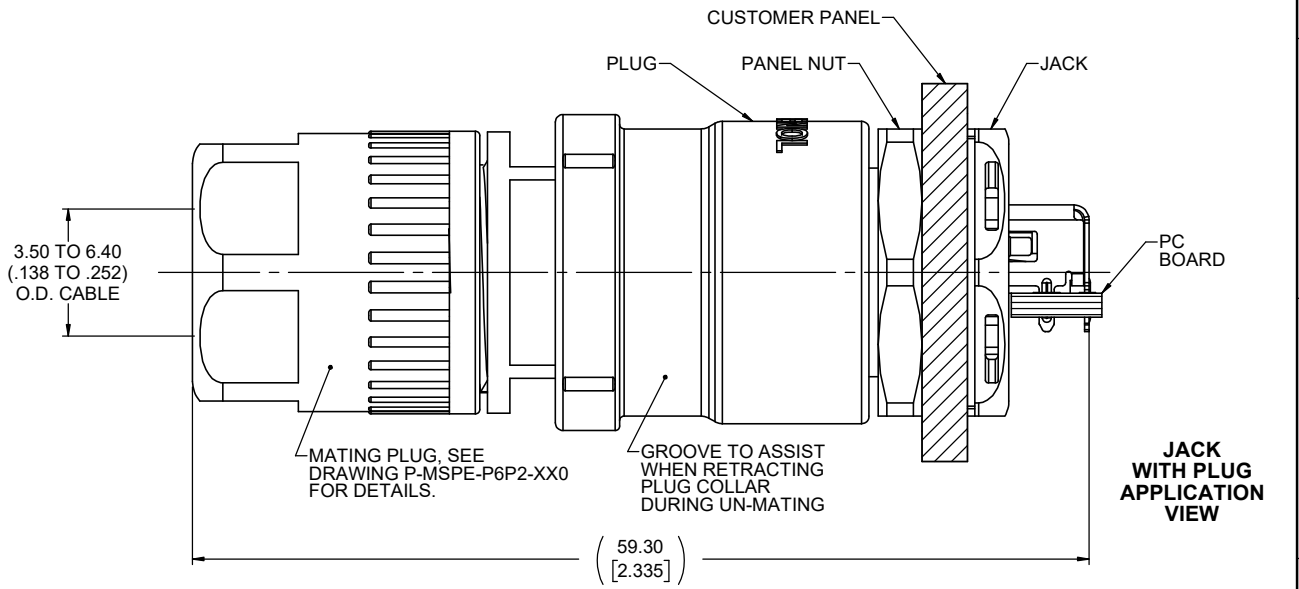
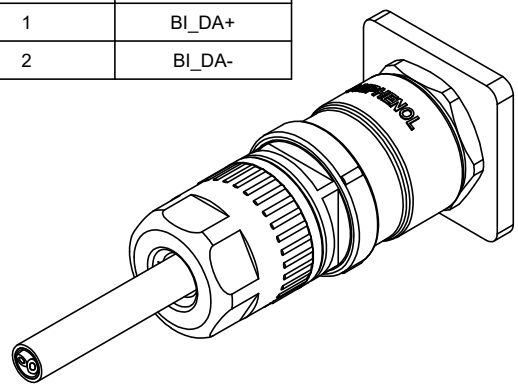
**P-MSPE-J6P2-B02**

CODE ID NO. 03554 DWG SIZE: X SCALE: 4:1 SHEET 1 OF 2

REVISIONS			
REV	DESCRIPTION, ECN, EAR NO.	DATE	APP'D
A	PRODUCT DRAWING (EAR 15028)	DEC14/21	K.L.
B	PRODUCT DRAWING (EAR 15097)	MAR30/22	K.L.



CONTACT POSITION	SIGNAL PER IEC 63171-6
1	BI_DA+
2	BI_DA-



**PUSH / PULL FUNCTION**

**MATING**

- ALIGN MATING AREA
- PUSH PLUG TO ENGAGE LATCH TO JACK

**UN-MATING**

- PULL FRONT PLUG COLLAR BACK APPROXIMATELY 1.2mm (.05") TO DIS-ENGAGE LATCH
- PULL PLUG TO UN-MATE FROM JACK



UNLESS SPECIFIED OTHERWISE	DRAWN	T. TRAN	OCT07/21
PRIMARY UNITS MILLIMETRES	CHECKED	K. LAMBIE	DEC14/21
SECONDARY UNITS INCHES	M.E. APP'D		
REFERENCE IN PARENTHESES	Q.A. APP'D		
GENERAL TOLERANCES	DWG APPR.		
1 DECIMAL PLACE	ENG. REL. NO.	EAR 15028	
2 DECIMAL PLACES	REF.		
3 DECIMAL PLACES	THIRD ANGLE PROJECTION		
ANGULAR DEGREES	DO NOT SCALE DRAWING		

**Amphenol Canada Corp.**  
Commercial Products

MSPE SERIES, SINGLE PAIR ETHERNET, IP67 JACK, PUSH/PULL, RIGHT ANGLE PCB TERMINATION, RoHS COMPLIANT

DWG. NO. **P-MSPE-J6P2-B02** REV **B**

CODE ID NO. 03554 DWG SIZE: X SCALE: 4:1 SHEET 2 OF 2