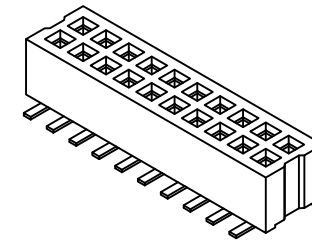
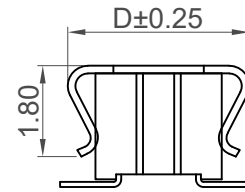
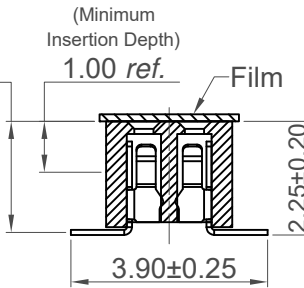
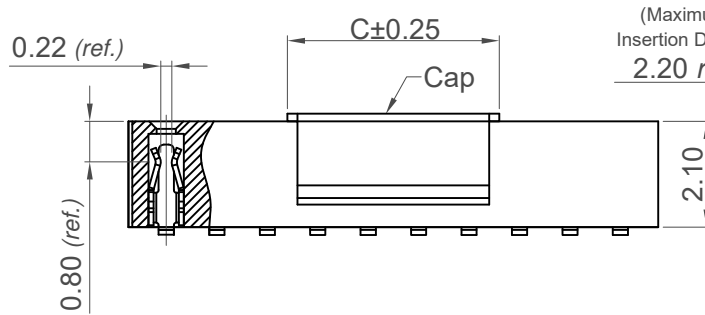
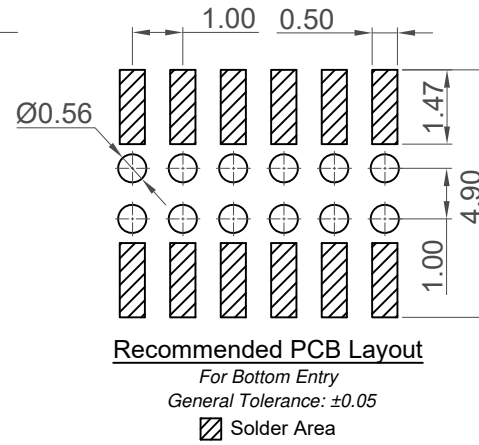
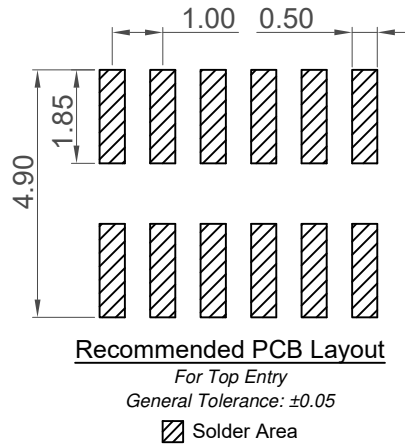
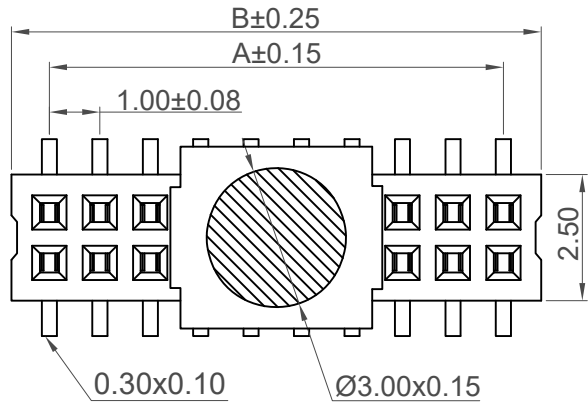


No. of Contacts	Dimensions			
	A	B	C	D
4	1.00	2.50	3.00	3.85
6	2.00	3.50		
8	3.00	4.50		
10	4.00	5.50		
12	5.00	6.50		
14	6.00	7.50		
16	7.00	8.50		
18	8.00	9.50		
20	9.00	10.50		
22	10.00	11.50		
24	11.00	12.50		
26	12.00	13.50		
28	13.00	14.50		
30	14.00	15.50		
32	15.00	16.50		
34	16.00	17.50		
36	17.00	18.50		
38	18.00	19.50		
40	19.00	20.50		
42	20.00	21.50		
44	21.00	22.50	4.20	3.40
46	22.00	23.50		
48	23.00	24.50		
50	24.00	25.50		
52	25.00	26.50		
54	26.00	27.50		
56	27.00	28.50		
58	28.00	29.50		
60	29.00	30.50		
62	30.00	31.50		
64	31.00	32.50		
66	32.00	33.50		
68	33.00	34.50		
70	34.00	35.50		
72	35.00	36.50		
74	36.00	37.50		
76	37.00	38.50		
78	38.00	39.50		
80	39.00	40.50		



Ordering Grid

BC085-XX-X-0390-L-X Request Samples and Quotation

No. of Contacts
04 to 80

Contact Plating
A = Gold Flash All Over (Standard)
C = Tin All Over

Footprint Width (1/100mm)
0390 = 3.90mm

Packing Options

C = Tape and Reel with Film (Standard)
B = Tape and Reel with Cap
D = Tube
E = Tube with Cap
F = Tube with Film (Unavailable for 4 contacts)

Insulator Material
L = LCP (Standard)

Specifications

Material
Insulator: LCP, UL94V-0, Black
Contact: Phosphor Bronze

Plating
See ordering grid

Electrical
Current Rating: 1A per contact
Contact Resistance: 40 mΩ max.
Insulating Resistance: 500 MΩ min.
Dielectric Withstand Voltage: 200V AC

Mechanical & Environmental

Operating Temperature: -40°C to +105°C
Soldering Process:
IR Reflow: 260°C for 10 sec.
Manual Solder: 350°C for 3-5 sec

Mates with (subject to pin length):
BC035 BC036 BC040 BC045
BC050 BC055 BC057

Part Number		Product Description	
BC085		1.00mm Pitch Socket, Dual Entry	
Drawing Date		Dual Row, Surface Mount, Vertical	
20th May 2008			
By	CC	Tolerances (Except as Noted)	Units:
Detail	BC085 F PCN	Length X. ± 0.30 XX ± 0.25 XXX ± 0.15 X.XXX ± 0.10	Metric (mm)
Revision	F4	Angle X° ± 5° XX° ± 2° XXX° ± 1° X.XXX° ± 0.5°	RoHS COMPLIANT 2011/65/EC
Date	06/09/21	3rd Angle Projection	Deca-SIDE

This drawing is confidential and copyright of Global Connector Technology, Ltd (GCT). This drawing must not be copied or disclosed without written consent. E & OE



Not to Scale Drawn By AJO Sheet No. 1/1