

# TPA3255EVM

This User's Guide describes the operation of the evaluation module (TPA3255EVM, rev A) for the TPA3255 315-W Stereo/600-W mono PurePath™ Ultra-HD Analog Input Power Stage. The user's guide also provides design information, which includes schematics, BOM, and PCB layout. For questions and support go to the E2E forums ([e2e.ti.com](http://e2e.ti.com)).

The main contents of this document are:

- Hardware descriptions and implementation
- Design information

Related documents:

- TPA3255 Data Sheet ([SLASEA8](#))

Topic	Page
<b>2</b> <b>Hardware Overview</b> .....	<b>3</b>
<b>3</b> <b>TPA3255EVM Setup</b> .....	<b>6</b>
<b>4</b> <b>Using TPA3255EVM in Different Output Configurations</b> .....	<b>9</b>
<b>5</b> <b>Board Layouts, Bill of Materials, and Schematic</b> .....	<b>12</b>

## 1 Trademarks

PurePath is a trademark of Texas Instruments.

## 2 Hardware Overview

The TPA3255EVM PurePath™ Ultra-HD evaluation module demonstrates the TPA3255DDV integrated circuit from Texas Instruments. The TPA3255DDV is a high-performance high-power class-D amplifier that enables true premium sound quality with high-efficiency class-D technology. It features an advanced integrated feedback design and high-speed gate driver error correction (PurePath Ultra-HD), which enables ultra-low distortion across the audio band and superior audio quality. This EVM supports two BTL (stereo 2.0) output channels, one PBTL (mono 0.1) output channel, one BTL plus two SE (2.1) output channels, and four SE (4.0) output channels configurations. The NE5532 is a High Performance Audio Op Amp designed to allow TPA3255DDV operation with differential or single ended input signals to the EVM with differential inputs yielding the optimal performance. TPA3255EVM is a complete 2-V<sub>rms</sub> analog input 2 × 315-W stereo/1 × 600-W mono high-power amplifier ready for evaluation and excellent listening experience.



**Figure 1. TPA3255EVM**

### 2.1 TPA3255EVM Features

The TPA3255EVM has the following features:

- Stereo PurePath Ultra-HD evaluation module
- Self-contained protection system (short circuit, clip, and thermal)
- Standard 4-V<sub>RMS</sub> differential input or single-ended line input
- BTL, PBTL, and SE output configuration support
- Frequency adjust and oscillator sync interface
- Single supply voltage range 14–53.5 V
- Double-sided, plated-through, 2-oz. Cu 2-layer PCB layout

## 2.2 TPA3255EVM Frequency Adjust

The TPA3255EVM offers hardware trimmed oscillator frequency by external control of the `FREQ_ADJ` pin. The Frequency adjust can be used to reduce interference problems while using a radio receiver tuned within the AM band, the switching frequency can be changed from nominal to lower values. These values should be chosen such that the nominal and the lower value switching frequencies together results in the fewest cases of interference throughout the AM band. The oscillator frequency can be selected by the value of the `FREQ_ADJ` resistor connected to GND in master mode according to [Table 1](#).

**Table 1. Frequency Adjust Master Mode Selection**

Master Mode	Resistor to GND
Nominal	30 k $\Omega$
AM1	20 k $\Omega$
AM2	10 k $\Omega$

For slave-mode operation, turn off the oscillator by pulling the `FREQ_ADJ` pin to DVDD. This configures the `OSC_I/O` pins as inputs to be slaved from an external differential clock. In a master/slave system inter-channel delay is automatically set up between the switching phases of the audio channels, which can be illustrated by no idle channels switching at the same time. This will not influence the audio output, but only the switch timing to minimize noise coupling between audio channels through the power supply. This will optimize audio performance and result in better operating conditions for the power supply. The inter-channel delay will be set up for a slave device depending on the polarity of the `OSC_I/O` connection such that slave mode 1 is selected by connecting the `OSC_I/O` of the master device with the `OSC_I/O` of the slave device with the same polarity (+ to + and – to –), while slave mode 2 is selected by connecting the `OSC_I/O`'s with the inverse polarity (+ to – and – to +).

## 2.3 TPA3255EVM Single-Ended and Differential Input

The TPA3255EVM supports both differential and single-ended inputs. For single-ended inputs, J4 and/or J19 jumpers are set to the SE position, so that the TPA3255EVM uses the NE5532 to convert the single-ended input signal to differential to properly drive the differential inputs of the TPA3255. The input RCA jack, J3, is used to provide INA inputs and RCA jack J14 is used to provide INB inputs. RCA jack J18 is used to provide INC inputs and RCA jack J15 is used to provide IND inputs with differential inputs.

For differential input operation, J4 and/or J19 jumpers are set to the DIFF position, and the TPA3255EVM uses the NE5532 to buffer the differential input signal to the differential inputs of the TPA3255. The input RCA jack, J3, is used to provide INA, RCA jack J14 provides INB, RCA jack J18 provides INC, and RCA jack J15 provides IND with differential inputs.

---

**NOTE:** Single-ended input settings on the TPA3255EVM should only be used for channels with output configuration BTL or PBTL, not SE. For SE output configuration J4 and/or J19 jumpers for that channel must be set to the DIFF position, so the input signal INx is mapped directly to OUTx.

---

## 2.4 TPA3255EVM Clip Overtemperature and Fault Indicators

The TPA3255EVM is equipped with LED indicators that illuminate when the  $\overline{\text{FAULT}}$  and/or  $\overline{\text{CLIP\_OTW}}$  pin goes low. See [Table 2](#) and ([SLASEA8](#)) for more details.

**Table 2. Fault and Clip Overtemperature Status**

<b>FAULT</b>	<b>CLIP_OTW</b>	<b>Description</b>
0	0	Overtemperature (OTE) or overload (OLP) or undervoltage (UVP). Junction temperature higher than 125°C (overtemperature warning).
0	0	Overload (OLP) or undervoltage (UVP). Junction temperature higher than 125°C (overtemperature warning).
0	1	Overload (OLP) or undervoltage (UVP). Junction temperature lower than 125°C.
1	0	Junction temperature higher than 125°C (overtemperature warning)
1	1	Junction temperature lower than 125°C and no OLP or UVP faults (normal operation)

### 3 TPA3255EVM Setup

This section describes the TPA3255EVM hardware setup and connection.

#### 3.1 TPA3255EVM Setup

Figure 2 illustrates the TPA3255EVM connection.

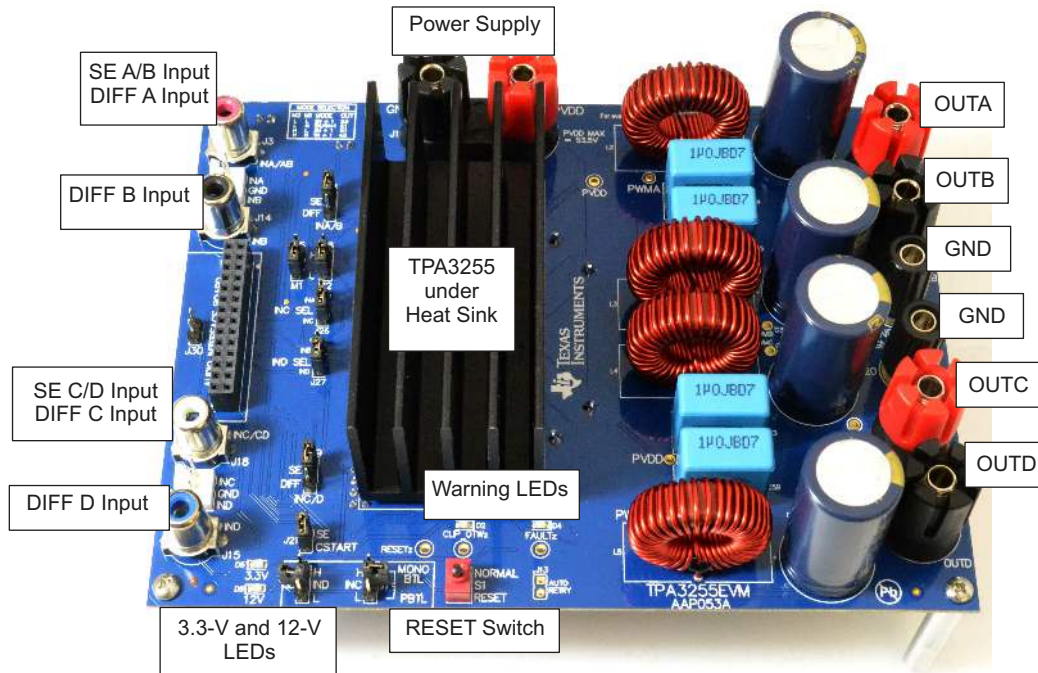


Figure 2. TPA3255EVM Connections

#### 3.2 Hardware Requirements

The following hardware is required for this EVM:

- TPA3255EVM (AAP053-001)
- Power supply 5–14 A/18–53.5 V<sub>DC</sub>
- Two 2–8 Ω (≈300 W) speakers/resistor loads
- Four speaker/banana cables
- RCA input cables
- Analog output audio source

### 3.3 Hardware Default Setup BTL (2.0)

BTL (2.0) default hardware setup is as follows:

- Remove the EVM from the ESD bag.
- Check that jumpers are in their default state as shown in [Figure 1](#) and [Table 3](#) for stereo **BTL** operation:

**Table 3. Stereo BTL Default Jumper States**

Jumper	Setting	Comment
J29	IN	PVDD to 15-V BUCK
J31	IN	12-V LDO to 12-V TERM
J32	IN	3.3-V LDO to 3.3-V TERM
J33	IN	3.3-V LDO to 3.3-V TERM
J21	IN	CSTART SE
J16	3 to 4	MASTER MODE
J5	2 to 3	M1 – BTL
J6	2 to 3	M2 – BTL
J22	IN	OUTA CAP SHUNT
J23	IN	OUTB CAP SHUNT
J24	IN	OUTC CAP SHUNT
J25	IN	OUTD CAP SHUNT
J26	2 to 3	INC SELECT
J27	2 to 3	IND SELECT
J7	OUT	PBTL SELECT INC
J8	OUT	PBTL SELECT IND
J10	OUT	INC/D DIFF INPUT
J12	OUT	INC/D DIFF INPUT
J4	1 to 2	INA/B SE INPUT
J19	1 to 2	INC/D SE INPUT

- Set **S1** to the **RESET** position.
- Set power supply to 51 V (14–53.5-V range) and current to 10 A (5–14-A range). Do not power up until all connections are completed.
- Connect power supply to TPA3255 EVM positive terminal to PVDD (**RED**) and negative terminal to GND (**BLACK**).
- Connect **left** channel speaker/power resistor load (4–8 Ω) to TPA3255 EVM positive output terminal to OUTA (**RED**) and AP analog input channel A positive terminal.
- Connect **left** channel speaker/power resistor load (4–8 Ω) to TPA3255 EVM negative output terminal to OUTB (**BLACK**) and AP analog input channel A negative terminal.
- Connect **right** channel speaker/power resistor load (4–8 Ω) to TPA3255 EVM positive output terminal to OUTC (**RED**) and AP analog input channel B positive terminal.
- Connect **right** channel speaker/power resistor load (4–8 Ω) to TPA3255 EVM negative output terminal to OUTD (**BLACK**) and AP analog input channel B negative terminal.
- Be careful not to mix up PVDD, OUTA, and OUTB terminals, since the colors are the same (**RED**).
- For **single-ended stereo inputs**, connect AP channel A XLR to RCA male jacks to female RCA jacks input A/AB (**RED**) and AP channel B XLR to RCA male jacks to female RCA jacks input C/CD (**WHITE**) and set **J4** and **J19** jumper positions to SE.
- For **differential stereo inputs**, connect positive RCA male jacks to female RCA jacks input A/AB (**RED**) and input C/CD (**WHITE**) and connect negative RCA male jacks to female RCA jacks input B (**BLUE**) and input D (**BLACK**) and set **J4** and **J19** jumper positions to DIFF.
- Power up power supply once all the connections are made correctly and the 3.3-V and 12-V LEDs (**GREEN**) will illuminate.

- Set **S1** to the **NORMAL** position.
- CLIP\_OTWz (**ORANGE**) and FAULTz (**RED**) LEDs should be off, if the audio source is off.

---

**NOTE:** **J3/J10** and **J18/J15** can be used for differential inputs to INA/INB and INC/IND, respectively.

---

Using a smart phone, tablet, or PC with headphone to RCA cable, audio streaming via headphone jack can begin once the EVM is powered up correctly with jumpers in their default state. Start the media player of your choice and enjoy the enhanced audio performance TPA3255 provides as a quick check of the setup.



## 4 Using TPA3255EVM in Different Output Configurations

The TPA3255EVM can be configured for four different output operations. The 2.0 BTL configuration is the default set up of the TPA3255EVM described in [Section 3.3](#). The remaining three configurations are 2.1 BTL plus two single-ended (SE) outputs, 0.1 PBTL output, and 4.0 single-ended (SE) outputs.

**Table 4. Mode Selection Pins**

Mode Pins		Input Mode	Output Configuration	Description
M2	M1			
0	0	2N + 1	2 × BTL	Stereo BTL output configuration
0	1	2N/1N + 1	1 × BTL + 2 × SE	2.1 BTL + SE mode
1	0	2N + 1	1 × PBTL	Paralleled BTL configuration. Connect INPUT_C and INPUT_D to GND.
1	1	1N + 1	4 × SE	Single-ended output configuration

### 4.1 BTL Plus Two SE (2.1) Operation

Configure the EVM as follows for 2 SE + 1 BTL operation:

**Table 5. 2 SE + 1 BTL Default Jumper States**

Jumper	Setting	Comment
J29	IN	PVDD to 15-V BUCK
J31	IN	12-V LDO to 12-V TERM
J32	IN	3.3-V LDO to 3.3-V TERM
J33	IN	3.3-V LDO to 3.3-V TERM
J21	IN	CSTART SE
J16	3 to 4	MASTER MODE
J5	1 to 2	M1 – 2XSE + BTL
J6	2 to 3	M2 - 2XSE + BTL
J22	IN	OUTA CAP SHUNT
J23	IN	OUTB CAP SHUNT
J24	OUT	OUTC CAP SHUNT
J25	OUT	OUTD CAP SHUNT
J26	2 to 3	INC SELECT
J27	2 to 3	IND SELECT
J7	OUT	PBTL SELECT INC
J8	OUT	PBTL SELECT IND
J10	OUT	INC/D DIFF INPUT
J12	OUT	INC/D DIFF INPUT
J4	1 to 2	INA/B SE INPUT
J19	1 to 2	INC/D SE INPUT

- Set **J6** to L and **J5** to H.
- Connect left (stereo) speaker/power resistor load (2–4 Ω) positive terminal to OUTC and remove jumper **J24**.
- Connect right (stereo) speaker/power resistor load (2–4 Ω) positive terminal to OUTD and remove jumper **J25**.
- Connect subwoofer (mono) speaker/power resistor load (4–8 Ω) positive terminal to OUTA and negative terminal to OUTB.
- Set **J19** jumper position to DIFF.
- Connect **left** (stereo) channel input to female RCA jack input C/CD (**WHITE**) for OUTC speaker.

- Connect **right** (stereo) channel input to female RCA jack input D (**BLACK**) for OUTD speaker.
- For **single-ended subwoofer (mono) input**, connect RCA male jack to female RCA jack input A/AB (**RED**) and set **J4** jumper positions to SE.
- For **differential subwoofer (mono) inputs**, connect positive RCA male jack to female RCA jack input A/AB (**RED**) and connect negative RCA male jack to female RCA jack input B (**YELLOW**) and set **J4** jumper positions to DIFF.

---

**NOTE:** **OUTC** and **OUTD** are the single-ended output channels and **OUTA** and **OUTB** are the BTL channel for 2.1 operations.

---

## 4.2 PBTL (0.1) Output Operation

Configure the EVM as follows for PBTL operations:

**Table 6. PBTL Default Jumper States**

Jumper	Setting	Comment
J29	IN	PVDD to 15-V BUCK
J31	IN	12-V LDO to 12-V TERM
J32	IN	3.3-V LDO to 3.3-V TERM
J33	IN	3.3-V LDO to 3.3-V TERM
J21	IN	CSTART SE
J16	3 to 4	MASTER MODE
J5	2 to 3	M1 – PBTL
J6	1 to 2	M2 – PBTL
J22	IN	OUTA CAP SHUNT
J23	IN	OUTB CAP SHUNT
J24	IN	OUTC CAP SHUNT
J25	IN	OUTD CAP SHUNT
J26	2 to 3	INC SELECT
J27	2 to 3	IND SELECT
J7	2 to 3	PBTL SELECT INC – GND
J8	2 to 3	PBTL SELECT IND – GND
J10	OUT	INC/D DIFF INPUT
J12	OUT	INC/D DIFF INPUT
J4	1 to 2	INA/B SE INPUT
J19	1 to 2	INC/D SE INPUT

- Set **J6** to H and **J5** to L.
- Connect speaker/power resistor (2–4  $\Omega$ ) positive terminal to OUTA and OUTC (OUT A and C shorted).
- Connect speaker/power resistor (2–4  $\Omega$ ) negative terminal to OUTB and OUTD (OUT B and D shorted).
- Install PBTL jumpers **J7** and **J8** (pulls input C and input D to GND).
- For **single-ended mono input**, connect RCA male jack to female RCA jack input A/AB (**RED**) and set **J4** jumper positions to SE.
- For **differential mono inputs**, connect positive RCA male jack to female RCA jack input A/AB (**RED**) and connect negative RCA male jack to female RCA jack input B (**YELLOW**) and set **J4** jumper position to DIFF.

---

**NOTE:** **INA** and **INB** are the inputs for PBTL and **INC** and **IND** are grounded for PBTL operation.

---

### 4.3 Single-Ended (SE) Output (4.0) Operation

Configure the EVM as follows for 4 single-ended operations:

**Table 7. SE 4.0 Default Jumper States**

Jumper	Setting	Comment
J29	IN	PVDD to 15-V BUCK
J31	IN	12-V LDO to 12-V TERM
J32	IN	3.3-V LDO to 3.3-V TERM
J33	IN	3.3-V LDO to 3.3-V TERM
J21	IN	CSTART SE
J16	3 to 4	MASTER MODE
J5	1 to 2	M1 – 4XSE
J6	1 to 2	M2 – 4XSE
J22	OUT	OUTA CAP SHUNT
J23	OUT	OUTB CAP SHUNT
J24	OUT	OUTC CAP SHUNT
J25	OUT	OUTD CAP SHUNT
J26	2 to 3	INC SELECT
J27	2 to 3	IND SELECT
J7	OUT	PBTL SELECT INC
J8	OUT	PBTL SELECT IND
J10	OUT	INC/D DIFF INPUT
J12	OUT	INC/D DIFF INPUT
J4	2 to 3	INA/B DIFF INPUT
J19	2 to 3	INC/D DIFF INPUT

- Set **J6** to H and **J5** to H.
- Connect speaker/power resistor (2–4  $\Omega$ ) positive terminal to OUTA and remove jumper **J22**.
- Connect speaker/power resistor (2–4  $\Omega$ ) positive terminal to OUTB and remove jumper **J23**.
- Connect speaker/power resistor (2–4  $\Omega$ ) positive terminal to OUTC and remove jumper **J24**.
- Connect speaker/power resistor (2–4  $\Omega$ ) positive terminal to OUTD and remove jumper **J25**.
- Set both **J4** and **J19** jumpers position to DIFF.
- Connect input to female RCA jack input A/AB (**RED**) for OUTA speaker.
- Connect input to female RCA jack input B (**YELLOW**) for OUTB speaker.
- Connect input to female RCA jack input C/CD (**WHITE**) for OUTC speaker.
- Connect input to female RCA jack input D (**BLACK**) for OUTD speaker.

---

**NOTE:** The performance of the TPA3255EVM/TPA3255DDV is dependent on the power supply. Design the power supply with margins that can deliver the needed power. In low-frequency applications additional bulk capacitance may be needed. Replacing the bulk capacitors on the TPA3255EVM with more capacitance may be necessary, depending on the power supply used.

---

## 5 Board Layouts, Bill of Materials, and Schematic

### 5.1 TPA3255EVM Board Layouts

Figure 3 and Figure 4 illustrate the board layouts for the EVM.

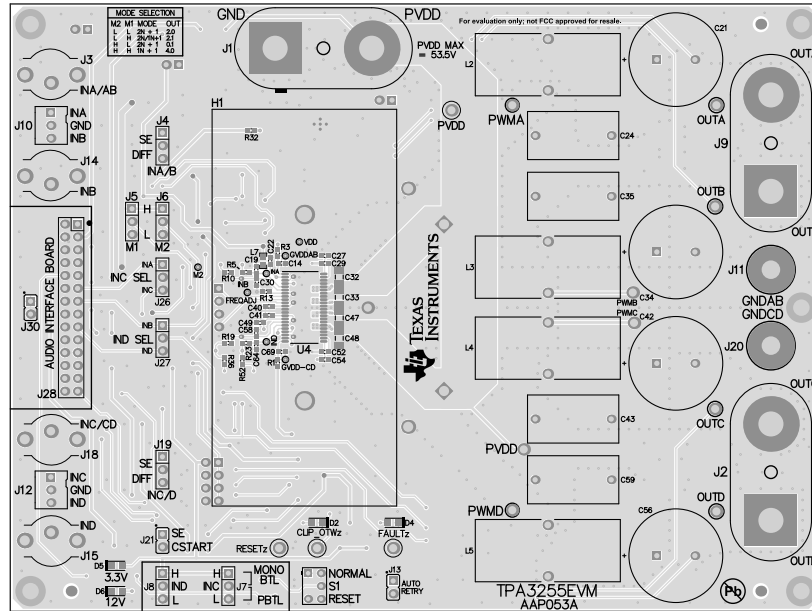


Figure 3. TPA3255EVM Top Composite Assembly

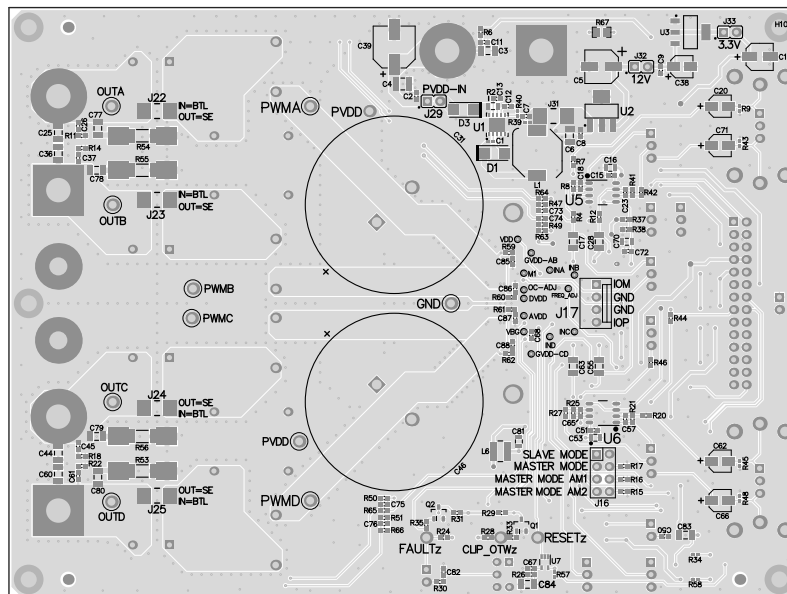


Figure 4. TPA3255EVM Bottom Composite Assembly

## 5.2 TPA3255EVM Board Dimension

Figure 5 illustrates the TPA3255EVM board dimensions, which are 140 mm × 120 mm.

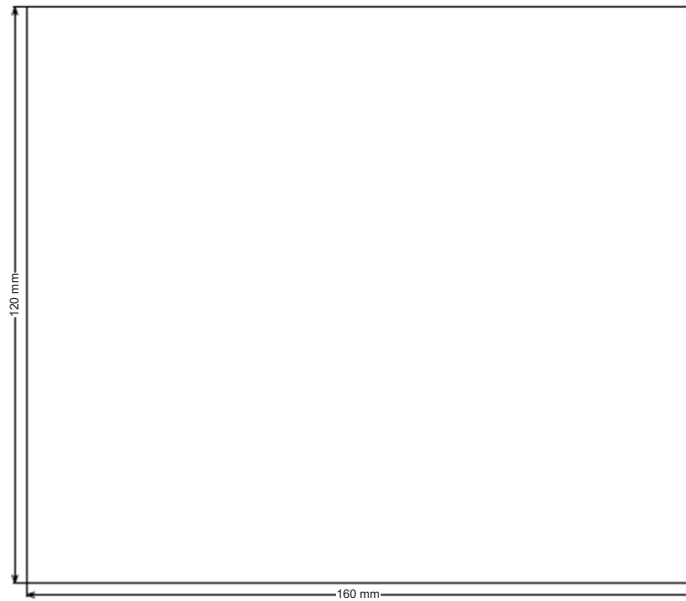


Figure 5. TPA3255EVM Board Dimension

### 5.3 Bill of Materials

Table 8 displays the BOM for this EVM.

**Table 8. Bill of Materials**

Designator	Quantity	Value	Description	Package Reference	Part Number	Manufacturer
!PCB1	1		Printed Circuit Board		AAP053	Any
C1	1	0.047 $\mu$ F	CAP, CERM, 0.047 $\mu$ F, 25 V, $\pm$ 10%, X7R, 0402	402	GRM155R71E473KA88D	MuRata
C2	1	0.1 $\mu$ F	CAP, CERM, 0.1 $\mu$ F, 100 V, $\pm$ 10%, X7R, 0603	603	GRM188R72A104KA35J	MuRata
C3, C32, C33, C47, C48, C83, C84	7	1 $\mu$ F	CAP, CERM, 1 $\mu$ F, 100 V, $\pm$ 10%, X7R, 1206	1206	GRM31CR72A105KA01L	MuRata
C4	1	2.2 $\mu$ F	CAP, CERM, 2.2 $\mu$ F, 100 V, $\pm$ 10%, X7R, 1210	1210	C1210C225K1RACTU	Kemet
C5	1	47 $\mu$ F	CAP, AL, 47 $\mu$ F, 16 V, $\pm$ 20%, 0.36 $\Omega$ , SMD	SMT Radial D	EEE-FK1C470P	Panasonic
C6	1	4.7 $\mu$ F	CAP, CERM, 4.7 $\mu$ F, 25 V, $\pm$ 10%, X7R, 1206	1206	GRM31CR71E475KA88L	MuRata
C7	1	5600 pF	CAP, CERM, 5600 pF, 50 V, $\pm$ 10%, X7R, 0603	603	GRM188R71H562KA01D	MuRata
C8, C50	2	0.47 $\mu$ F	CAP, CERM, 0.47 $\mu$ F, 25 V, $\pm$ 10%, X7R, 0603	603	GRM188R71E474KA12D	MuRata
C9, C13, C14, C15, C22, C51, C67, C68, C69, C72, C82	11	0.1 $\mu$ F	CAP, CERM, 0.1 $\mu$ F, 50 V, $\pm$ 10%, X7R, 0603	603	C0603C104K5RACTU	Kemet
C10	1	100 $\mu$ F	CAP, AL, 100 $\mu$ F, 6.3 V, $\pm$ 20%, 0.7 $\Omega$ , SMD	SMT Radial C	EEE-FK0J101UR	Panasonic
C11, C26, C37, C45, C61	5	0.01 $\mu$ F	CAP, CERM, 0.01 $\mu$ F, 100 V, $\pm$ 10%, X7R, 0603	603	06031C103KAT2A	AVX
C12	1	4700 pF	CAP, CERM, 4700 pF, 50 V, $\pm$ 10%, X7R, 0603	603	C0603X472K5RACTU	Kemet
C16, C53, C70, C81	4	10 $\mu$ F	CAP, CERM, 10 $\mu$ F, 16 V, $\pm$ 10%, X5R, 0805	805	EMK212BJ106KG-T	Taiyo Yuden
C17, C20, C28, C38, C55, C62, C63, C66, C71	9	10 $\mu$ F	CAP, AL, 10 $\mu$ F, 16 V, $\pm$ 20%, 1.35 $\Omega$ , SMD	SMT Radial B	EEE-FK1C100R	Panasonic
C18, C23, C57, C65	4	22 pF	CAP, CERM, 22 pF, 50 V, $\pm$ 5%, C0G/NP0, 0603	603	GRM1885C1H220JA01D	MuRata
C19, C30, C58, C64	4	100 pF	CAP, CERM, 100 pF, 50 V, $\pm$ 5%, C0G/NP0, 0603	603	GRM1885C1H101JA01D	MuRata
C21, C34, C42, C56	4	1500 $\mu$ F	CAP, AL, 1500 $\mu$ F, 63 V, $\pm$ 20%, 0.03 $\Omega$ , AEC-Q200 Grade 2, TH	Dia 18 mm	EEU-FC1J152	Panasonic
C24, C35, C43, C59	4	1 $\mu$ F	CAP, Film, 1 $\mu$ F, 250 V, $\pm$ 5%, TH	18mm $\times$ 9.5mm $\times$ 17.5 mm	PHE426HB7100JR06	Kemet
C25, C36, C44, C60	4	1000 pF	CAP, CERM, 1000 pF, 100 V, $\pm$ 5%, C0G/NP0, 1206	1206	12061A102JAT2A	AVX
C27, C29, C52, C54	4	0.033 $\mu$ F	CAP, CERM, 0.033 $\mu$ F, 25 V, $\pm$ 10%, X7R, 0603	603	GRM188R71E333KA01D	MuRata
C31, C46	2	4700 $\mu$ F	CAP, AL, 4700 $\mu$ F, 80 V, $\pm$ 20%, 0.071 $\Omega$ , TH	D35 mm $\times$ L30 mm	SLPX472M080H3P3	Cornell Dubilier Electronics
C39	1	47 $\mu$ F	CAP, AL, 47 $\mu$ F, 63 V, $\pm$ 20%, 0.65 $\Omega$ , SMD	SMT Radial F	EEE-FK1J470P	Panasonic
C40, C41	2	1 $\mu$ F	CAP, CERM, 1 $\mu$ F, 16 V, $\pm$ 10%, X7R, 0603	603	GRM188R71C105KA12D	MuRata

**Table 8. Bill of Materials (continued)**

Designator	Quantity	Value	Description	Package Reference	Part Number	Manufacturer
C49	1	0.01 $\mu$ F	CAP, CERM, 0.01 $\mu$ F, 50 V, $\pm$ 10%, X7R, 0603	603	GRM188R71H103KA01D	MuRata
D1	1	100 V	Diode, Schottky, 100 V, 1 A, SMA	SMA	B1100-13-F	Diodes Inc.
D2	1	Orange	LED, Orange, SMD	LED_0805	LTST-C170KFKT	Lite-On
D3	1	100 V	Diode, Schottky, 100 V, 3 A, SMA	SMA	SK310A-TP	Micro Commercial Components
D4	1	Red	LED, Red, SMD	LED_0805	LTST-C170KRKT	Lite-On
D5	1	Green	LED, Green, SMD	LED_0805	LTST-C171GKT	Lite-On
H1	1		Heat Sink, Vertical	Heatsink	ATS-TI1OP-519-C1-R3	Advanced Thermal Solutions
H2, H3, H4, H5, H6, H12, H13	7		MACHINE SCREW PAN PHILLIPS M3 5mm	Screw M3 Phillips head	MPMS 003 0005 PH	B&F Fastener Supply
H7, H8, H9, H10, H11	5		Standoff, Hex, 25-mm Length, M3, Aluminum	Standoff M3	24438	Keystone
J1, J2, J9	3		Dual Binding Posts with Base, 2x1, TH	Dual Binding Posts with Base, 2 x 1, TH	6883	Pomona Electronics
J3	1		RCA Jack, Vertical, Red, TH	RCA JACK, RED	RCJ-022	CUI Inc.
J4, J5, J6, J7, J8, J19, J26, J27	8		Header, 100 mil, 3 x 1, Gold, TH	PBC03SAAN	PBC03SAAN	Sullins Connector Solutions
J10, J12	2		Header, 2.54 mm, 3 x 1, TH	Header, 2.54 mm, 3 x 1, TH	22-11-2032	Molex
J11, J20	2		Binding Post, BLACK, TH	11.4 mm x 27.2 mm	7007	Keystone
J14	1		RCA Jack, Vertical, Black, TH	RCA Jack, Vertical, Black, TH	RCJ-021	CUI Inc.
J15	1		RCA Jack, Vertical, Blue, TH	RCA Jack, Vertical, Blue, TH	RCJ-025	CUI Inc.
J16	1		Header, 100 mil, 4 x 2, Tin, TH	Header, 4 x 2, 100 mil, Tin	PEC04DAAN	Sullins Connector Solutions
J17	1		Header (friction lock), 100 mil, 4 x 1, Gold, TH	Header 4 x 1 keyed	22112042	Molex
J18	1		RCA Jack, Vertical, White, TH	RCA JACK, WHITE	RCJ-023	CUI Inc.
J21, J30	2		Header, 100 mil, 2 x 1, Gold, TH	Sullins 100 mil, 1 x 2, 230 mil above insulator	PBC02SAAN	Sullins Connector Solutions
J22, J23, J24, J25, J29	5		JUMPER TIN SMD	6.85 mm x 0.97 mm x 2.51 mm	S1911-46R	Harwin
J28	1		Receptacle, 100 mil, 8 x 2, Gold, TH	Receptacle, 8 x 2, Body 21.08 mm x 4.95 mm, Pitch 2.54 mm	SSQ-108-02-G-D	Samtec
L1	1	100 $\mu$ H	Inductor, Shielded Drum Core, Ferrite, 100 $\mu$ H, 1.5 A, 0.165 $\Omega$ , SMD	10 mm x 5 mm x 10 mm	7447714101	Würth Elektronik
L2, L3, L4, L5	4	10 $\mu$ H	Inductor, Toroid, Powdered Iron, 10 $\mu$ H, 6.1 A, 0.026 $\Omega$ , TH	28.6 mm x 12.3 mm	MA5172-AE	Coilcraft
L6	1	10 $\mu$ H	Inductor, Wirewound, 10 $\mu$ H, 0.8 A, 0.204 $\Omega$ , SMD	2-Pin SMD, Body 4 mm x 4 mm, Height 1.2 mm	NRS4012T100MDGJV	Taiyo Yuden

**Table 8. Bill of Materials (continued)**

Designator	Quantity	Value	Description	Package Reference	Part Number	Manufacturer
L7	1	10 $\mu$ H	Inductor, Wirewound, 10 $\mu$ H, 0.08 A, 0.36 $\Omega$ , SMD	603	GLFR1608T100M-LR	TDK
Q1, Q2	2	60 V	MOSFET, N-CH, 60 V, 0.17 A, SOT-23	SOT-23	2N7002-7-F	Diodes Inc.
R1, R3, R4, R12, R30, R44, R46	7	0	RES, 0, 5%, 0.1 W, 0603	603	CRCW06030000Z0EA	Vishay-Dale
R2	1	182 k	RES, 182 k, 1%, 0.125 W, 0805	805	ERJ-6ENF1823V	Panasonic
R5, R10, R19, R23, R33, R35	6	100	RES, 100, 1%, 0.1 W, 0603	603	CRCW0603100RFKEA	Vishay-Dale
R6	1	100 k	RES, 100 k, 1%, 0.1 W, 0603	603	CRCW0603100KFKEA	Vishay-Dale
R7, R8, R20, R21, R25, R27, R37, R38, R41, R42	10	10.0 k	RES, 10.0 k, 0.1%, 0.1 W, 0603	603	RT0603BRD0710KL	Yageo America
R9, R43, R45, R48	4	100 k	RES, 100 k, 1%, 0.063 W, 0402	402	CRCW0402100KFKE D	Vishay-Dale
R11, R14, R18, R22	4	3.3	RES, 3.3, 5%, 0.1 W, 0603	603	CRCW06033R30JNEA	Vishay-Dale
R13	1	22.0 k	RES, 22.0 k, 1%, 0.1 W, 0603	603	RC0603FR-0722KL	Yageo America
R15, R36, R52	3	10.0 k	RES, 10.0 k, 1%, 0.1 W, 0603	603	CRCW060310K0FKEA	Vishay-Dale
R16	1	20.0 k	RES, 20.0 k, 1%, 0.1 W, 0603	603	RC0603FR-0720KL	Yageo America
R17	1	30.0 k	RES, 30.0 k, 1%, 0.1 W, 0603	603	RC0603FR-0730KL	Yageo America
R24, R28	2	47 k	RES, 47 k, 5%, 0.1 W, 0603	603	RC0603JR-0747KL	Yageo America
R26	1	3.30 k	RES, 3.30 k, 1%, 0.1 W, 0603	603	RC0603FR-073K3L	Yageo America
R29, R31	2	1.00 k	RES, 1.00 k, 1%, 0.1 W, 0603	603	CRCW06031K00FKEA	Vishay-Dale
R32	1	12.0 k	RES, 12.0 k, 1%, 0.1 W, 0603	603	ERJ-3EKF1202V	Panasonic
R34	1	360	RES, 360, 5%, 0.063 W, 0402	402	CRCW0402360RJNE D	Vishay-Dale
R39	1	4.99 k	RES, 4.99 k, 1%, 0.063 W, 0402	402	CRCW04024K99FKE D	Vishay-Dale
R40	1	1.00 k	RES, 1.00 k, 1%, 0.063 W, 0402	402	CRCW04021K00FKE D	Vishay-Dale
S1	1		Switch, SPDT, On-On, 2 Pos, TH	Switch, 7 mm $\times$ 4.5 mm	200USP1T1A1M2RE	E-Switch
SH1, SH2, SH3, SH4, SH5, SH6, SH7, SH8	8	1 $\times$ 2	Shunt, 100 mil, Gold plated, Black	Shunt	969102-0000-DA	3M
U1	1		High Voltage 1A Step Down Switching Regulator, 10-pin LLP, Pb-Free	SDC10A	LM5010ASD/NOPB	Texas Instruments
U2	1		1A Low Dropout Regulator, 4-pin SOT-223, Pb-Free	MP04A	LM2940IMP-12/NOPB	Texas Instruments
U3	1		FIXED LOW-DROPOUT VOLTAGE REGULATOR, DCY0003A	DCY0003A	TLV1117-33IDCY	Texas Instruments



**Table 8. Bill of Materials (continued)**

Designator	Quantity	Value	Description	Package Reference	Part Number	Manufacturer
U4	1		150W Stereo/300W MONO PurePath HD Analog-input Power Stage, DDV0044D	DDV0044D	TPA3255D2DDVR	Texas Instruments
U5, U6	2		Dual Low-Noise Operational Amplifier, 10 to 30 V, 0 to 70 degC, 8-pin SOIC (D0008A), Green (RoHS& no Sb/Br)	D0008A	NE5532ADR	Texas Instruments
U7	1		ULTRA-SMALL SUPPLY VOLTAGE SUPERVISORS, DCK0005A	DCK0005A	TPS3802K33DCKR	Texas Instruments
C73, C74, C75, C76	0	22 pF	CAP, CERM, 22 pF, 50 V, ± 5%, C0G/NP0, 0603	603	GRM1885C1H220JA01D	MuRata
C77, C78, C79, C80	0	1 µf	CAP, CERM, 1 µF, 50 V, ± 10%, X7R, 1206	1206	GRM31MR71H105KA88L	MuRata
FID1, FID2, FID3, FID4, FID5, FID6	0		Fiducial mark. There is nothing to buy or mount.	N/A	N/A	N/A
J13	0		Header, 100 mil, 2 × 1, Gold, TH	Sullins 100 mil, 1 × 2, 230 mil above insulator	PBC02SAAN	Sullins Connector Solutions
R47, R49, R50, R51	0	10.0 k	RES, 10.0 k, 1%, 0.1 W, 0603	603	CRCW060310K0FKEA	Vishay-Dale
R53, R54, R55, R56	0	3.3	RES, 3.3, 5%, 0.75 W, 2010	2010	CRCW20103R30JNEF	Vishay-Dale
TP1, TP2, TP3, TP4, TP5, TP6, TP7, TP8, TP9, TP10, TP11, TP12, TP13, TP14	0		Test Point, Multipurpose, Grey, TH	Grey Multipurpose Testpoint	5128	Keystone

### 5.4 TPA3255EVM Schematics

The schematics for TPA3255EVM is illustrated in Figure 6, Figure 7, and Figure 8.

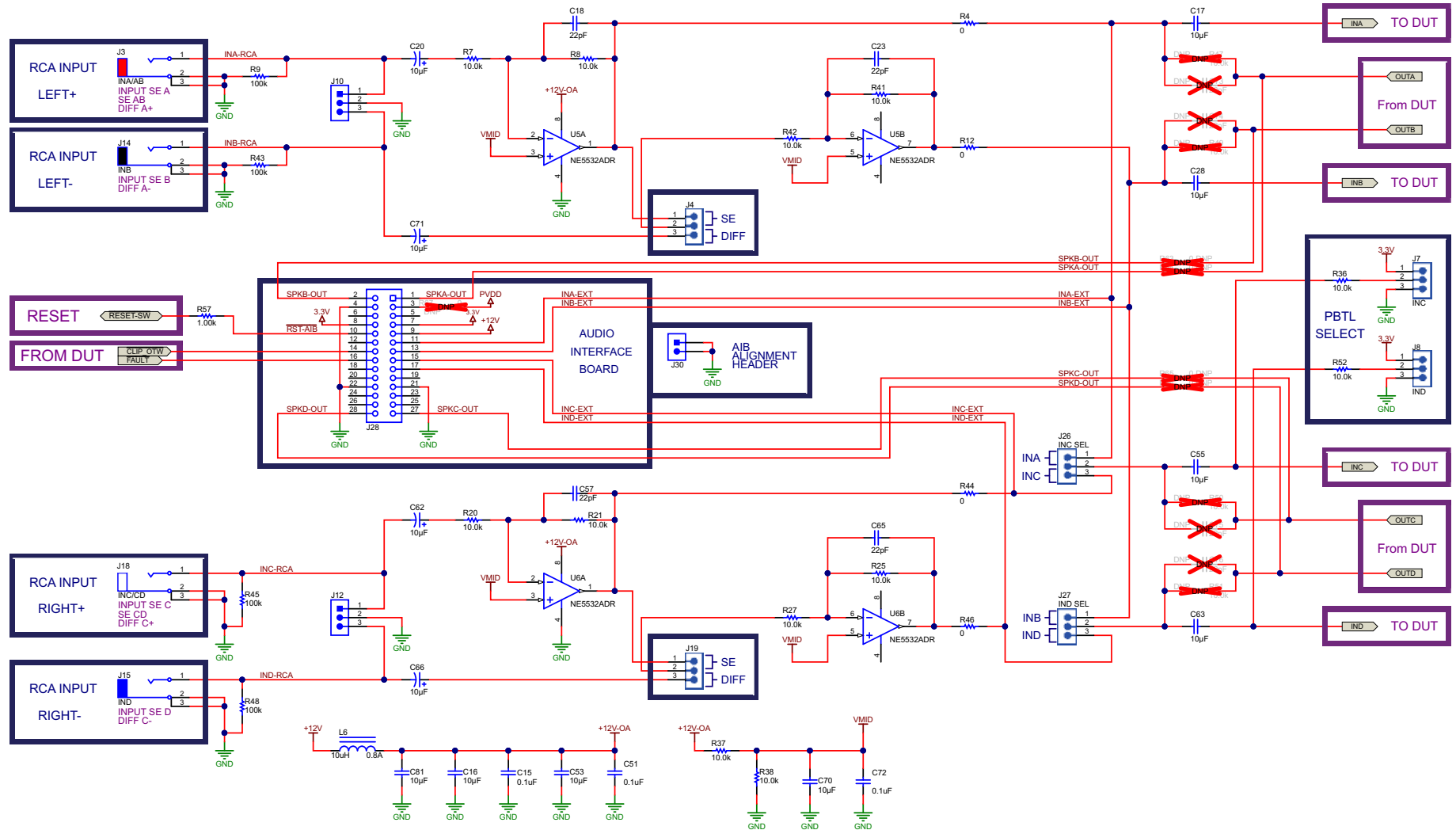


Figure 6. TPA3255EVM Schematic 1

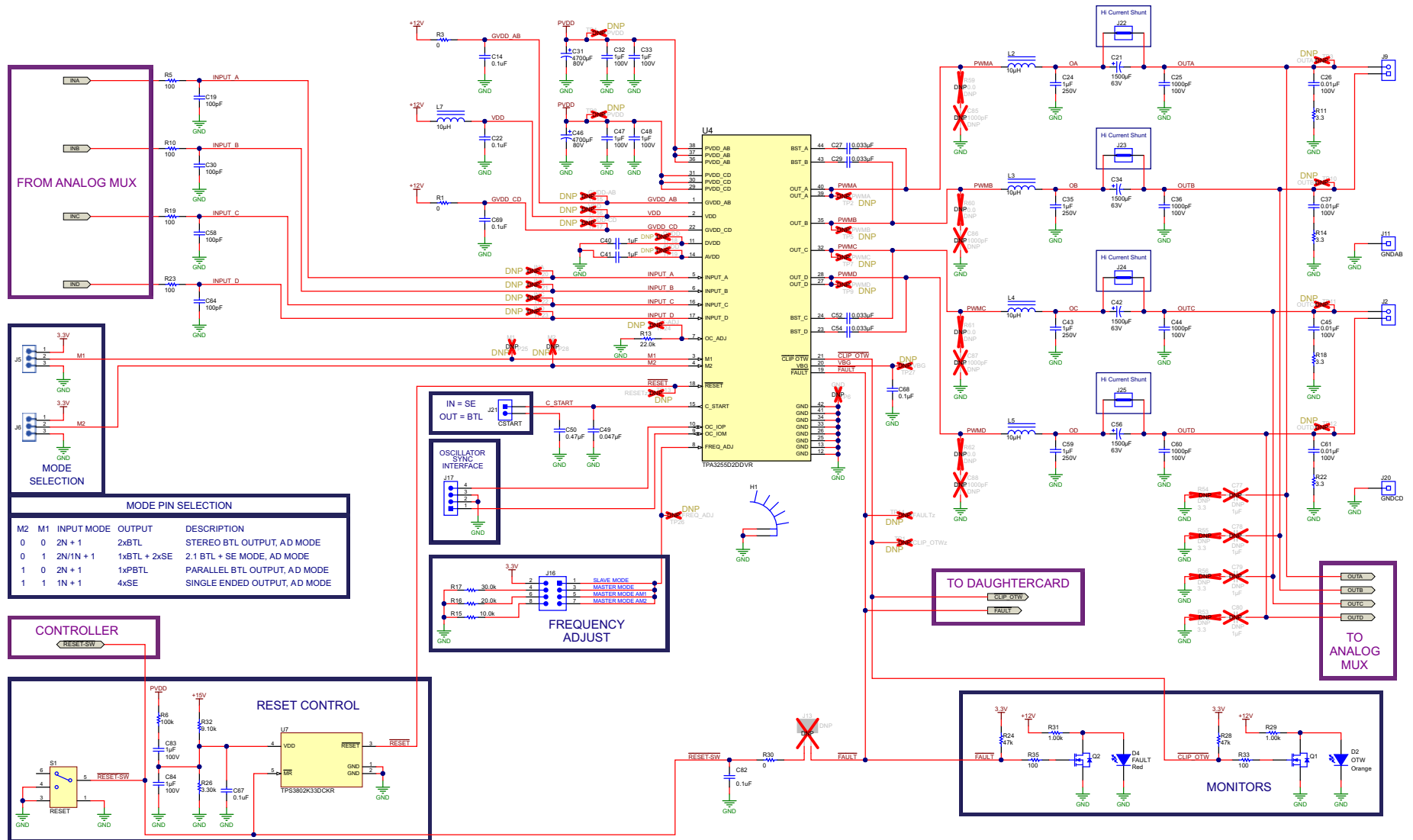


Figure 7. TPA3255EVM Schematic 2

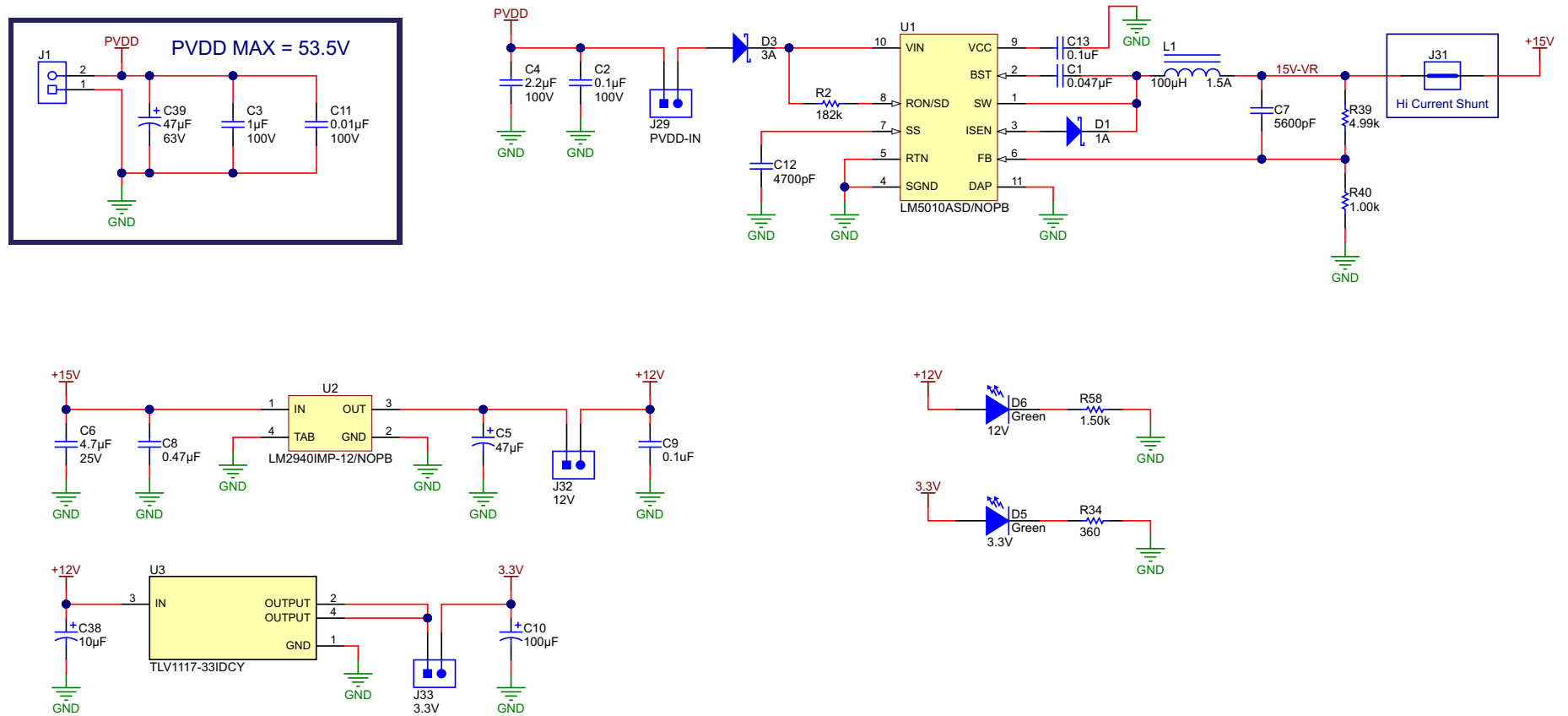


Figure 8. TPA3255EVM Schematic 3

## IMPORTANT NOTICE FOR TI DESIGN INFORMATION AND RESOURCES

Texas Instruments Incorporated ("TI") technical, application or other design advice, services or information, including, but not limited to, reference designs and materials relating to evaluation modules, (collectively, "TI Resources") are intended to assist designers who are developing applications that incorporate TI products; by downloading, accessing or using any particular TI Resource in any way, you (individually or, if you are acting on behalf of a company, your company) agree to use it solely for this purpose and subject to the terms of this Notice.

TI's provision of TI Resources does not expand or otherwise alter TI's applicable published warranties or warranty disclaimers for TI products, and no additional obligations or liabilities arise from TI providing such TI Resources. TI reserves the right to make corrections, enhancements, improvements and other changes to its TI Resources.

You understand and agree that you remain responsible for using your independent analysis, evaluation and judgment in designing your applications and that you have full and exclusive responsibility to assure the safety of your applications and compliance of your applications (and of all TI products used in or for your applications) with all applicable regulations, laws and other applicable requirements. You represent that, with respect to your applications, you have all the necessary expertise to create and implement safeguards that (1) anticipate dangerous consequences of failures, (2) monitor failures and their consequences, and (3) lessen the likelihood of failures that might cause harm and take appropriate actions. You agree that prior to using or distributing any applications that include TI products, you will thoroughly test such applications and the functionality of such TI products as used in such applications. TI has not conducted any testing other than that specifically described in the published documentation for a particular TI Resource.

You are authorized to use, copy and modify any individual TI Resource only in connection with the development of applications that include the TI product(s) identified in such TI Resource. NO OTHER LICENSE, EXPRESS OR IMPLIED, BY ESTOPPEL OR OTHERWISE TO ANY OTHER TI INTELLECTUAL PROPERTY RIGHT, AND NO LICENSE TO ANY TECHNOLOGY OR INTELLECTUAL PROPERTY RIGHT OF TI OR ANY THIRD PARTY IS GRANTED HEREIN, including but not limited to any patent right, copyright, mask work right, or other intellectual property right relating to any combination, machine, or process in which TI products or services are used. Information regarding or referencing third-party products or services does not constitute a license to use such products or services, or a warranty or endorsement thereof. Use of TI Resources may require a license from a third party under the patents or other intellectual property of the third party, or a license from TI under the patents or other intellectual property of TI.

TI RESOURCES ARE PROVIDED "AS IS" AND WITH ALL FAULTS. TI DISCLAIMS ALL OTHER WARRANTIES OR REPRESENTATIONS, EXPRESS OR IMPLIED, REGARDING TI RESOURCES OR USE THEREOF, INCLUDING BUT NOT LIMITED TO ACCURACY OR COMPLETENESS, TITLE, ANY EPIDEMIC FAILURE WARRANTY AND ANY IMPLIED WARRANTIES OF MERCHANTABILITY, FITNESS FOR A PARTICULAR PURPOSE, AND NON-INFRINGEMENT OF ANY THIRD PARTY INTELLECTUAL PROPERTY RIGHTS.

TI SHALL NOT BE LIABLE FOR AND SHALL NOT DEFEND OR INDEMNIFY YOU AGAINST ANY CLAIM, INCLUDING BUT NOT LIMITED TO ANY INFRINGEMENT CLAIM THAT RELATES TO OR IS BASED ON ANY COMBINATION OF PRODUCTS EVEN IF DESCRIBED IN TI RESOURCES OR OTHERWISE. IN NO EVENT SHALL TI BE LIABLE FOR ANY ACTUAL, DIRECT, SPECIAL, COLLATERAL, INDIRECT, PUNITIVE, INCIDENTAL, CONSEQUENTIAL OR EXEMPLARY DAMAGES IN CONNECTION WITH OR ARISING OUT OF TI RESOURCES OR USE THEREOF, AND REGARDLESS OF WHETHER TI HAS BEEN ADVISED OF THE POSSIBILITY OF SUCH DAMAGES.

You agree to fully indemnify TI and its representatives against any damages, costs, losses, and/or liabilities arising out of your non-compliance with the terms and provisions of this Notice.

This Notice applies to TI Resources. Additional terms apply to the use and purchase of certain types of materials, TI products and services. These include; without limitation, TI's standard terms for semiconductor products (<http://www.ti.com/sc/docs/stdterms.htm>), [evaluation modules](#), and [samples](http://www.ti.com/sc/docs/sampterm.htm) (<http://www.ti.com/sc/docs/sampterm.htm>).

Mailing Address: Texas Instruments, Post Office Box 655303, Dallas, Texas 75265  
Copyright © 2018, Texas Instruments Incorporated