

THIS DRAWING IS UNPUBLISHED. RELEASED FOR PUBLICATION.  
 COPYRIGHT BY TYCO ELECTRONICS CORPORATION. ALL INTERNATIONAL RIGHTS RESERVED.

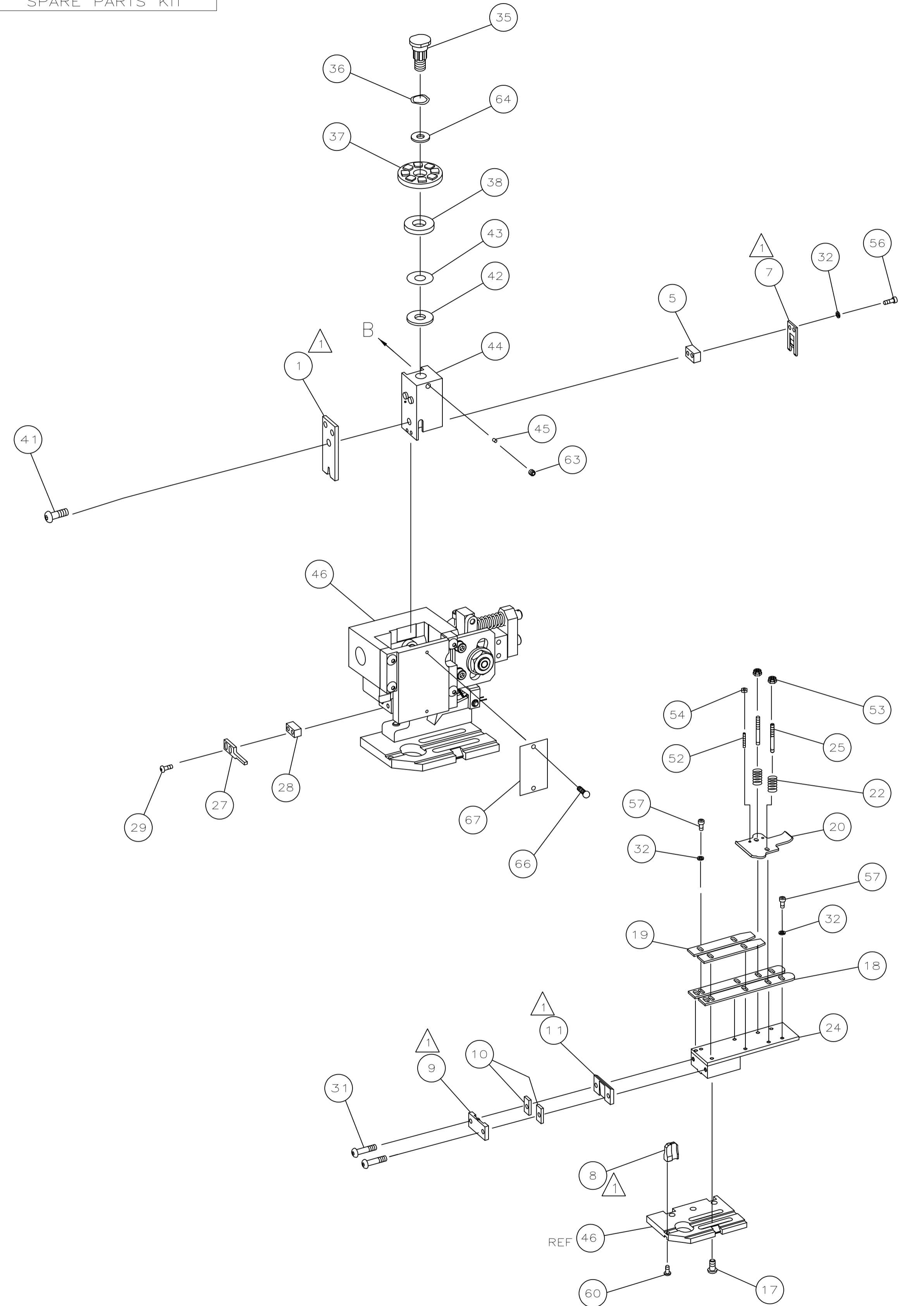
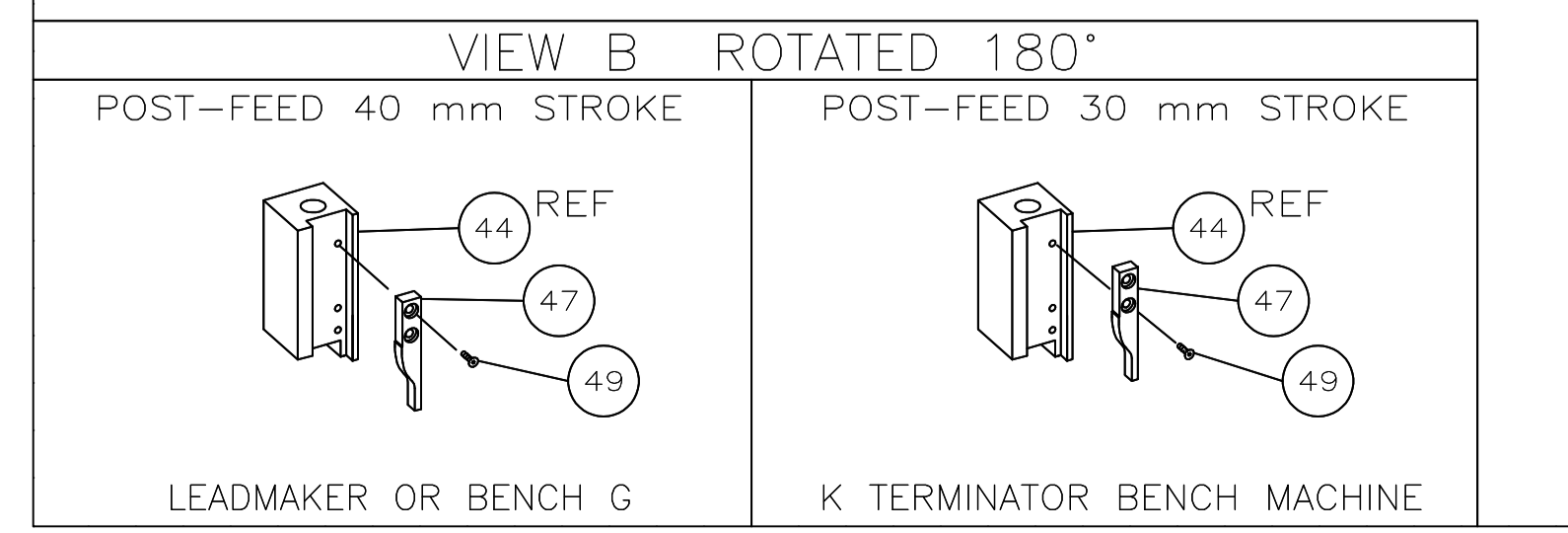
LOC		DIST		REVISIONS			
F	LTR	DATE	DN	APVD			
A	66	B	ECR-09-009081	4-2009	MY	GB	

PART NUMBER	REV	FIRST USED	TERMINATOR	FEED TYPE	DESCRIPTION
1339643-1	B	-	BENCH & LEADMAKER	MECH POST FEED	HD-I APPLICATOR
7-1339643-1	B	-	BENCH & LEADMAKER	MECH POST FEED	-1 AND SPARE PARTS
7-1339643-7	A	-	-	-	SPARE PARTS KIT

CRIMP DATA AMP TERMINAL AMP CRIMP SPECS			
TERMINAL NAME: RING TONGUE			
CRIMP	SIZE	TYPE	RANGE
WIRE	3.05 [.120 IN]	F	18-14 AWG OR 1.00-2.00mm <sup>2</sup>
INSUL	-	-	-
WIRE STRIP LENGTH		APPL INSTRUCTION	
4.39-5.16 [.173-.203 IN]		408-8323	
TERMINAL APPL SPEC	114-2084	FEED	14.17 [.558 IN]
TERMINALS APPLIED			
41346	41521	-	-
34812	41461	-	-
34839	-	-	-
34848	-	-	-
40593	-	-	-
40594	-	-	-
40595	-	-	-
40979	-	-	-
WIRE SIZE	CRIMP HEIGHT	PIN PN AND LENGTH [IN]	
mm <sup>2</sup> AWG			
14 AWG OR 2mm <sup>2</sup>	1.90 ±0.05 [.075 ±.002 IN]	8-354778-3 [.2910]	
16 AWG	1.70 ±0.05 [.067 ±.002 IN]	9-354778-9 [.2990]	
18 AWG OR 1mm <sup>2</sup>	1.57 ±0.05 [.062 ±.002 IN]	1-354779-0 [.3040]	
-	-	-	
-	-	-	
-	-	-	
-	-	-	
-	-	-	
-	-	-	
-	-	-	
-	-	-	
-	-	-	
-	-	-	
-	-	-	
-	-	-	
-	-	-	
-	-	-	
-	-	-	
-	-	-	
-	-	-	
-	-	-	

SET UP GAGE	LAYOUT
458638-3	L1339643

- ⚠️ RECOMMENDED SPARE PARTS.
- 2. GREASE RAM, CAM, CAM FOLLOWER AND FEED ROD LIGHTLY.
- 3. LUBRICATE DAILY PER THE APPLICATOR INSTRUCTION SHEET SUPPLIED WITH THE APPLICATOR.
- ⚠️ TENSILE VALUES REQUIRED ARE :-  
 14 AWG = 50LBS  
 16 AWG = 30LBS  
 18 AWG = 20LBS



QTY	REQD	PER	PART NO	DESCRIPTION	ITEM NO	
-	1	1	1339643	PRINT, APPLICATOR LOG SHEET	72	
-	1	1	1338705-2	DOCUMENTATION PACKAGE	71	
-	-	-	-	-	69	
-	-	-	-	-	68	
-	1	1	461264-1	PLATE, IDENTIFICATION	67	
-	2	2	21017-2	SCR,DRIVE(#2X.19)ID PLATE	66	
-	-	-	-	-	65	
-	1	1	986950-1	WASHER, FLAT PRECISION	64	
-	1	1	3-18031-0	SCR,SKT SET(M6X6)RAM	63	
-	-	-	-	-	62	
-	-	-	-	-	61	
-	1	1	18024-7	SCR,BHC(M4X10)ANVIL	60	
-	-	-	-	-	59	
-	-	-	-	-	58	
-	6	6	18023-9	SCR,SHC(M4X6)STRIP GUIDE	57	
-	2	2	1-18023-1	SCR,SHC(M4X10)SLUG BLADE	56	
-	-	-	-	-	55	
-	2	2	18029-1	NUT,HEX(M3)DRAG	54	
-	2	2	986965-1	NUT,HEX_SL(M4)DRAG STUD	53	
-	2	2	2-18032-2	SCR,SKT SET(M3X10)DRAG	52	
-	-	-	-	-	51	
-	-	-	-	-	50	
-	1	1	18024-3	SCR,BHC(M3X10)CAM	49	
-	-	-	-	-	48	
-	1	1	1338676-1	CAM, POST-FEED 30 & 40 mm ST	47	
-	1	1	1338662-1	APPLICATOR, BASIC (SUBASSY)	46	
-	1	1	690191-1	PLUG, NYLON	45	
-	1	1	1320998-1	RAM	44	
-	1	1	690125-1	WASHER, LAMINATED	43	
-	1	1	690124-1	WASHER, RAM	42	
-	1	1	2-18024-6	SCREW,BHC(M8X25)CRIMPER	41	
-	-	-	-	-	40	
-	-	-	-	-	39	
-	1	1	690223-2	SPACER, INSULATION DISC	38	
-	1	1	354777-1	WIRE DISC, PLASTIC	37	
-	1	1	22480-5	WASHER, SPRING	36	
-	1	1	690212-1	POST, RAM	35	
-	-	-	-	-	34	
-	-	-	-	-	33	
-	8	8	18025-2	WASHER,LOCK(M4)SHEAR BL	32	
-	2	2	1-18024-0	SCR,BHC(M4X20)SHEAR PL	31	
-	-	-	-	-	30	
-	2	2	18024-8	SCR,BHC(M4X12)STRIPPER	29	
-	1	1	3-690451-2	SPACER, STRIPPER	28	
-	1	1	240639-1	STRIPPER	27	
-	-	-	-	-	26	
-	2	2	1320906-1	DRAG, STUD	25	
-	1	1	1320995-2	STRIP GUIDE	24	
-	-	-	-	-	23	
-	2	2	4-22281-1	SPRING, DRAG	22	
-	-	-	-	-	21	
-	1	1	1338665-1	DRAG, STOCK	20	
-	2	2	1338664-1	GUIDE, UPPER STRIP	19	
-	2	2	1338663-1	GUIDE, LOWER STRIP	18	
-	4	4	1-18024-8	SCR,BHC(M6X12)STRIP GD PL	17	
-	-	-	-	-	16	
-	-	-	-	-	15	
-	-	-	-	-	14	
-	-	-	-	-	13	
-	-	-	-	-	12	
⚠️	1	1	691901-2	PLATE, REAR SHEAR	11	
-	2	2	1-240645-6	SPACER, SHEAR PLATE	10	
⚠️	1	1	240642-3	PLATE, FRONT SHEAR	9	
⚠️	1	2	1333224-5	ANVIL	8	
-	1	1	691157-5	BLADE, SLUG	7	
-	-	-	-	-	6	
-	1	1	240641-5	SPACER, SLUG BLADE	5	
-	-	-	-	-	4	
-	-	-	-	-	3	
-	-	-	-	-	2	
⚠️	1	2	1	456409-3	CRIMPER, WIRE	1

THIS DRAWING IS A CONTROLLED DOCUMENT.		BIN L LOFHOUSE 16MAY02		Tyco Electronics Corporation	
DIMENSIONS: INCHES		TOLERANCES UNLESS OTHERWISE SPECIFIED:		Harrisburg, PA 17105-3608	
0. PLC ± -	1. PLC ± -	2. PLC ± -	3. PLC ± -	4. PLC ± -	ANGLES ± -
MATERIAL -		FINISH -		RESTRICTED TO	
WEIGHT -		SIZE A1		CAGE CODE 00779	
CUSTOMER DRAWING		SCALE -		SHEET 1 OF 1	