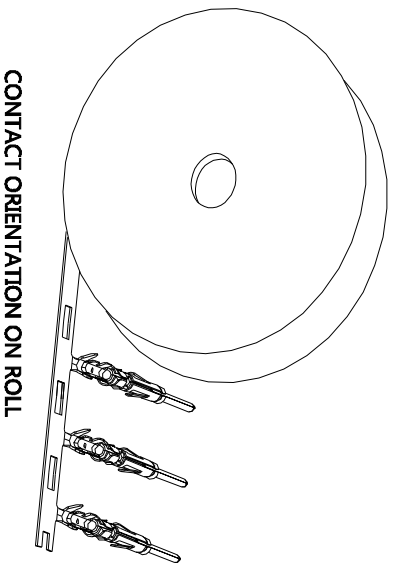


REVISIONS				
REV	ECO	DESCRIPTION	DATE	BY APPR
B1	-	RELEASED DRAWING	AUG-18-2014	BEN TOMMY

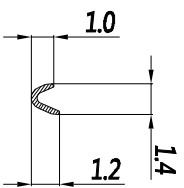


CONTACT ORIENTATION ON ROLL

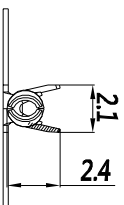
NOTES : (UNLESS OTHERWISE SPECIFIED)

1. MATERIAL :
 - 1.1. CONTACT BODY : COPPER ALLOY.
 - 1.2. OUTER SPRING : STAINLESS STEEL.
2. SPECIFICATIONS :
 - 2.1 CURRENT RATING : 5A MAX.
 - 2.2 TERMINATION TYPE : CRIMPING.
 - 2.3 WIRE RANGE : 30~28AWG.
 - 2.4 WIRE INSULATION DIA(MAX) : $\varnothing 2.6\text{mm}$.
3. ROHS COMPLIANT.
4. ALL DIMENSIONS ARE FOR REFERENCE USE ONLY.
5. AVAILABLE TOOLS :
 - 5.1 HAND CRIMPER : MFX-3954.
 - 5.2 CRIMP APPLICATOR : MFX-3957.
 - 5.3 EXTRACTION TOOL : QXRT20.

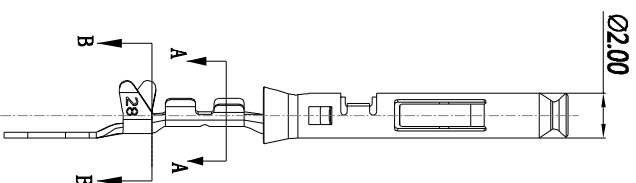
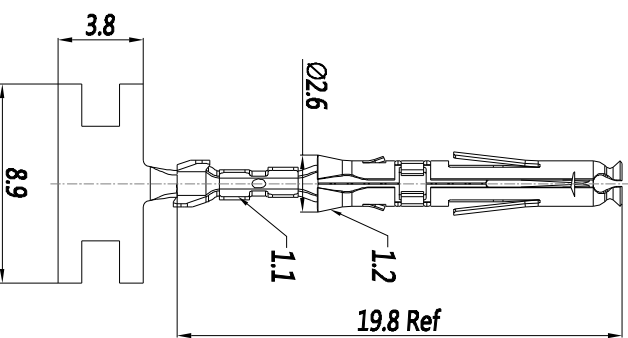
P/N	CONTACT PLATING(MATING AREA)
SS28W1T	TIN PLATING OVER NICKEL
SS28W1F	GOLD FLASH PLATING OVER NICKEL
SS28W1G5	5 μ GOLD PLATING OVER NICKEL
SS28W1G10	10 μ GOLD PLATING OVER NICKEL
SS28W1G15	15 μ GOLD PLATING OVER NICKEL
SS28W1G30	30 μ GOLD PLATING OVER NICKEL



SECTION A-A



SECTION B-B



QUANTITY	PART NUMBER	DESCRIPTION	ITER
MATERIALS LIST			

UNLESS OTHERWISE SPECIFIED 1) ALL DIMENSIONS ARE IN MILLIMETERS. 2) TOLERANCES ARE AS SHOWN: 1 PL, DEC 20, 20 2 PL, DEC 20, 20 3 PL, DEC 20, 20 3) Note reference =	SIGNATURES DRAWN: BEN CHECKED: ALG-17/04 ENGINEER: ANDREW S. FIFE APPROVAL: ANDREW S. FIFE	DATE 11/27/04	ECO-MATE SOCKET, STAMPED, 30-28AWG, SIZE 20.
---	--	------------------	---

PROCESS SPECIFICATIONS: NEXT ASST:	MATERIAL SPECIFICATIONS: CUSTOMER: THIS DRAWING IS SUPPLIED FOR SPECIFICATIONS AND PERFORMANCE DATA. THE DRAWING DOES NOT PROVIDE DETAILS OF REPRODUCTION ARE LIMITED. ALL MANUFACTURING VARIATION.	SIZE TYPE B C-	DWG NO. SS28W1XX	REVISION B1
---------------------------------------	---	-------------------	---------------------	----------------