



### SPECIFICATIONS

Model	Stroke mm	Max Energy Absorption J(kgf·m)	Max Equiv. Mass kg(kgf)	Range of Impact Rate m/s	Allowable Eccentric Angle °
FA-2725FA-C	25	79.3(8.1)	500(500)	0.15~3.0	±2.5

### COMMON SPECIFICATIONS

Max Drag N(kgf)	Max Cycle Rate cycle/min	Max Energy Absorption per min. J/min(kgf·m/min)	Extension Force N(kgf)	Operating Temp. C°	Mass g
7,200	60	539(55)	44.2(4.51) or lower	-5~70	446

### PRECAUTIONS FOR USE

- Do not use this product without carefully reading the attached owner's manual.
- We recommend that you use it with an external stopper (Stopper nut OP-020FB).
- Ensure that sufficient mounting strength is secured for this product.  
(As a guideline, it should be 2 to 3 times the maximum drag listed in the catalogue.)
- Do not use this product in a vacuum or a location where it may come in contact with oil.
- Ensure that an eccentric load is not applied to the soft absorber.
- The urethane caps are consumables. Please replace them when necessary.

### ADJUSTMENT METHOD

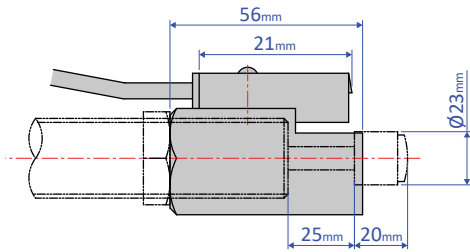
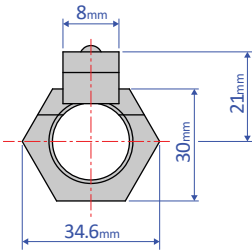
- To adjust, turn the adjustment knob located at the bottom of the main unit.
- Because the adjustment can be done in an analog manner, a value between two integers on the indicator can be set.
- Once the adjustment is complete, secure with a lock screw using a hex wrench.

## OPTIONAL PARTS

### Holder with a switch OP-030FB

#### OP-030FB-2 (with stopper function)

- Although a holder with a switch can be ordered on its own, we strongly recommend ordering one with the main unit. Please include the main unit's model number when placing an order.

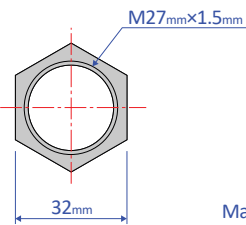
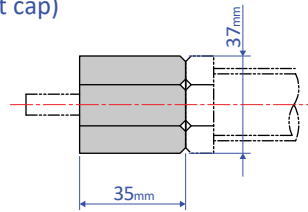


Mass 107g

### Stopper nut OP-020FB

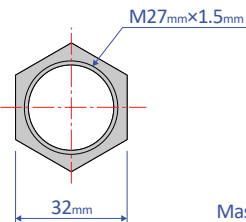
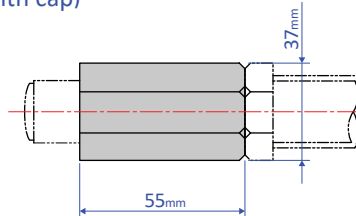
- Adjust so that it stops 1 mm before the stroke end, and fasten with the main unit's nut until secured.

#### OP-020FB-S (without cap)



Mass 90g

#### OP-020FB-C (with cap)



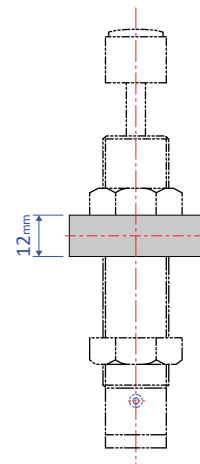
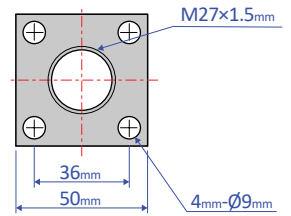
Mass 137g

Note: When attaching, make sure that the side without a bearing chamfer is the impact surface.

Standard nuts are sold separately as well - M27 Nut

### Square flange OP-040FB

- Once the attachment site is determined, use the main unit's nut to securely fasten in place.



Mass 157g