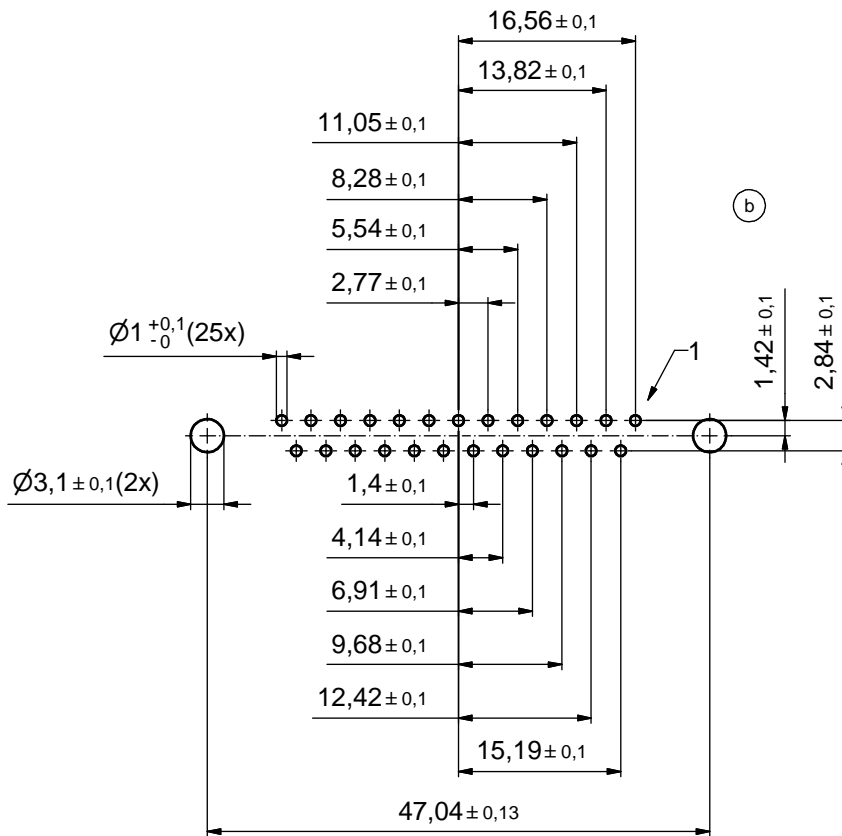


NOTES: (b)

1. METALSHELLS: STEEL; min. 315µm TIN over 40-80µm NICKEL
2. INSULATORS: PBT GF UL 94 V-0, BLACK
3. CONTACTS: COPPER ALLOY; PLATING (SEE PART NO):
  - PLEASE ADD A for GOLD FLASH over NICKEL ( PREFERRED TYPE)
  - PLEASE ADD B for 20µm HARD GOLD over min. 50µm NICKEL
  - PLEASE ADD C for 30µm HARD GOLD over min. 50µm NICKEL
4. THREADED REAR SPACERS / FRONT THREADED LOCKS: COPPER ALLOY; min. 200µm TIN over 80µm NICKEL
5. SLEEVES: COPPER ALLOY; min. 200µm TIN over 80µm NICKEL
6. P.C.B. HOLE DRILLINGS ON SHEET 2
7. MAXIMUM TORQUE VALUE FOR THREAD: 6 in.LB
8. CONNECTOR IS PART MARKED: 164□12149X CONEC ABC

Directive 2002/95/EC RoHS compliant

THIS DRAWING MAY NOT BE COPIED OR REPRODUCED IN ANY WAY, AND MAY NOT BE PASSED ON TO A THIRD PARTY WITHOUT WRITTEN PERMISSION. OWNERSHIP AND COPYRIGHT OF CONEC GmbH DO NOT ALTER CAD DRAWING BY HAND				tolerance		scale: 2:1 (5:1)
				date	name	material: see notes
				drawn	20.08.2014	Heinrich
				appd.	20.08.2014	Henneboel
				norm		
			d-old			
8 x b	Ä 5305	20.08.2014	Heinrich	title: D-SUB FEMALE		
a	Original			25pos. SOLDER PIN STRAIGHT		
rev.	description	date	name	with threaded rear spacer and front threaded lock		
						dwg no:
						(b) 16K1A3500
						part no: (b) 164□12149X
						DIN-A3
						sh: 1



P.C.B. HOLE DRILLINGS  
(P.C.B. TOP SIDE)

THIS DRAWING MAY NOT BE COPIED OR REPRODUCED IN ANY WAY, AND MAY NOT BE PASSED ON TO A THIRD PARTY WITHOUT WRITTEN PERMISSION. OWNERSHIP AND COPYRIGHT OF CONEC GmbH DO NOT ALTER CAD DRAWING BY HAND				tolerance		scale: 2:1
				date	name	material: see sheet 1
				drawn	20.08.2014	Heinrich
				appd.	20.08.2014	Henneboel
				norm		
				d-old		
				1 x b	Ä 5305	20.08.2014
rev.	description	date	name	<b>CONEC</b> <sup>®</sup>		title: P.C.B. HOLE DRILLINGS D-SUB FEMALE 25pos. SOLDER PIN STRAIGHT with threaded rear spacer and front threaded lock
a	Original					dwg no: 16K1A3500
						part no: see sheet 1