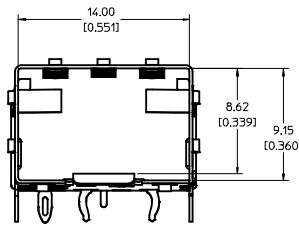
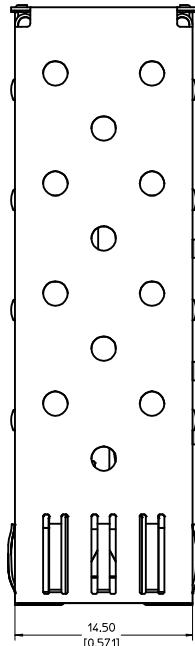


EMI PIN REMAINS FLAT. NO THRU HOLE IN PCB NECESSARY.

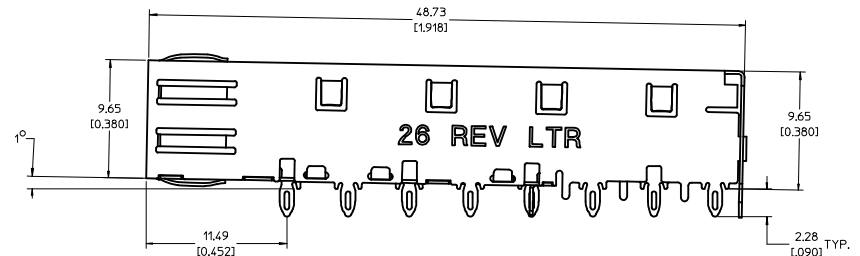
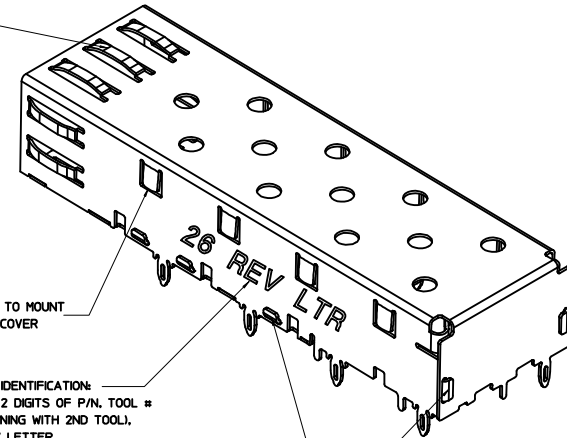


SPRING FINGER GASKET WITH TWO POINTS OF CONTACT. COMPLIES WITH SFP MSA BOARD AND BEZEL LOCATIONS

TABS USED TO MOUNT LIGHT PIPE COVER

CAGE IDENTIFICATION: LAST 2 DIGITS OF P/N, TOOL # (BEGINNING WITH 2ND TOOL), & REV LETTER. (EX: 26-2 X)

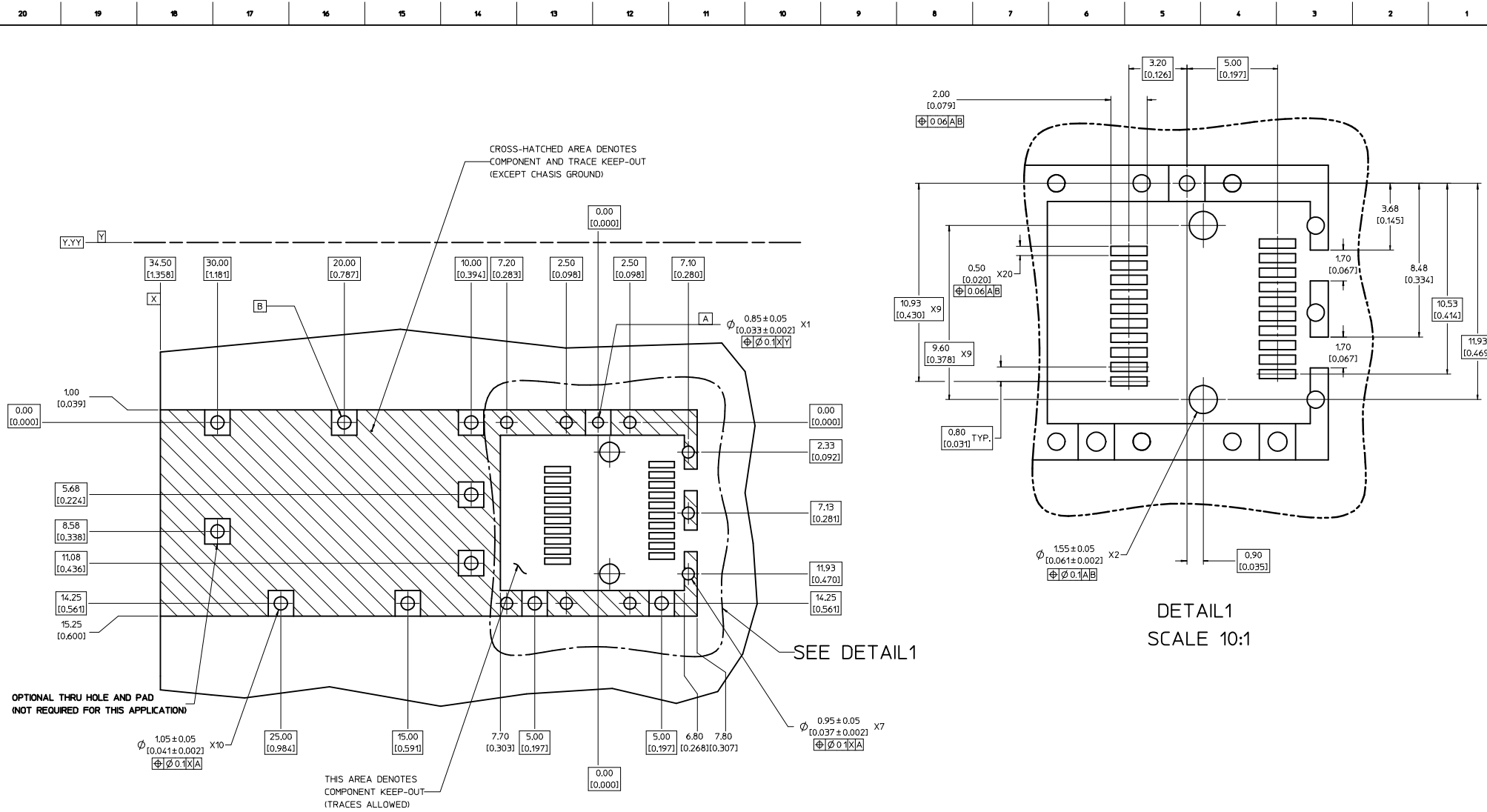
ONE PIECE DESIGN SECURELY FASTENED



NOTES:

- PRESS FIT LEGS, 0.090 INCHES LONG. 1.57 [0.062] MINIMUM PCB THICKNESS.
- CAN BE USED WITH THE FOLLOWING LIGHT PIPE PART NUMBERS:
 747260001 - LIGHT PIPE FROM BACK TO TOP (REFER TO DOCUMENT SD-74726-001)
 747260002 - LIGHT PIPE FROM SIDE TO TOP (REFER TO DOCUMENT SD-74726-002)
- MATERIAL: COPPER ALLOY
 PLATING: PRE-PLATED WITH NICKEL
- THIS PART MEETS THE RESTRICTION OF HAZARDOUS SUBSTANCES IN ELECTRICAL AND ELECTRONIC EQUIPMENT (ROHS) DIRECTIVE (2002/95/EC).

FLATTENED EMI LEG EC NO: USY2009-0334 DRAWN BY: CHYKDAJHNSTON CHECKED BY: APPR:K.LANDIA DATE: 2009/02/13 DATE: 2009/02/16 DESCRIPTION	QUALITY SYMBOLS	GENERAL TOLERANCES (UNLESS SPECIFIED)	DIMENSION STYLE	SCALE	DESIGN UNITS	THIRD ANGLE PROJECTION
	$\nabla=0$ $\nabla=0$	mm INCH 4 PLACES ± --- ± --- 3 PLACES ± --- ± .005 2 PLACES ± 0.13 ± .010 1 PLACE ± 0.25 ± --- ANGULAR ± 1°	MM/IN	1:1	METRIC	
	DRAFT WHERE APPLICABLE MUST REMAIN WITHIN DIMENSIONS	DRAWN BY: CHIRSCHY CHECKED BY: BRUSSELL APPROVED BY: RMAHMOOD DATE: 2007/07/13 DATE: 2007/07/13 DATE: 2007/07/13	TITLE			SFP ONE PIECE CAGE 0.090 PRESS FIT LEGS BELLY TO BELLY ASSEMBLY
		MATERIAL NO: 747370026 DOCUMENT NO: SD-74737-0026	MOLEX INCORPORATED			SHEET NO: 1 OF 5

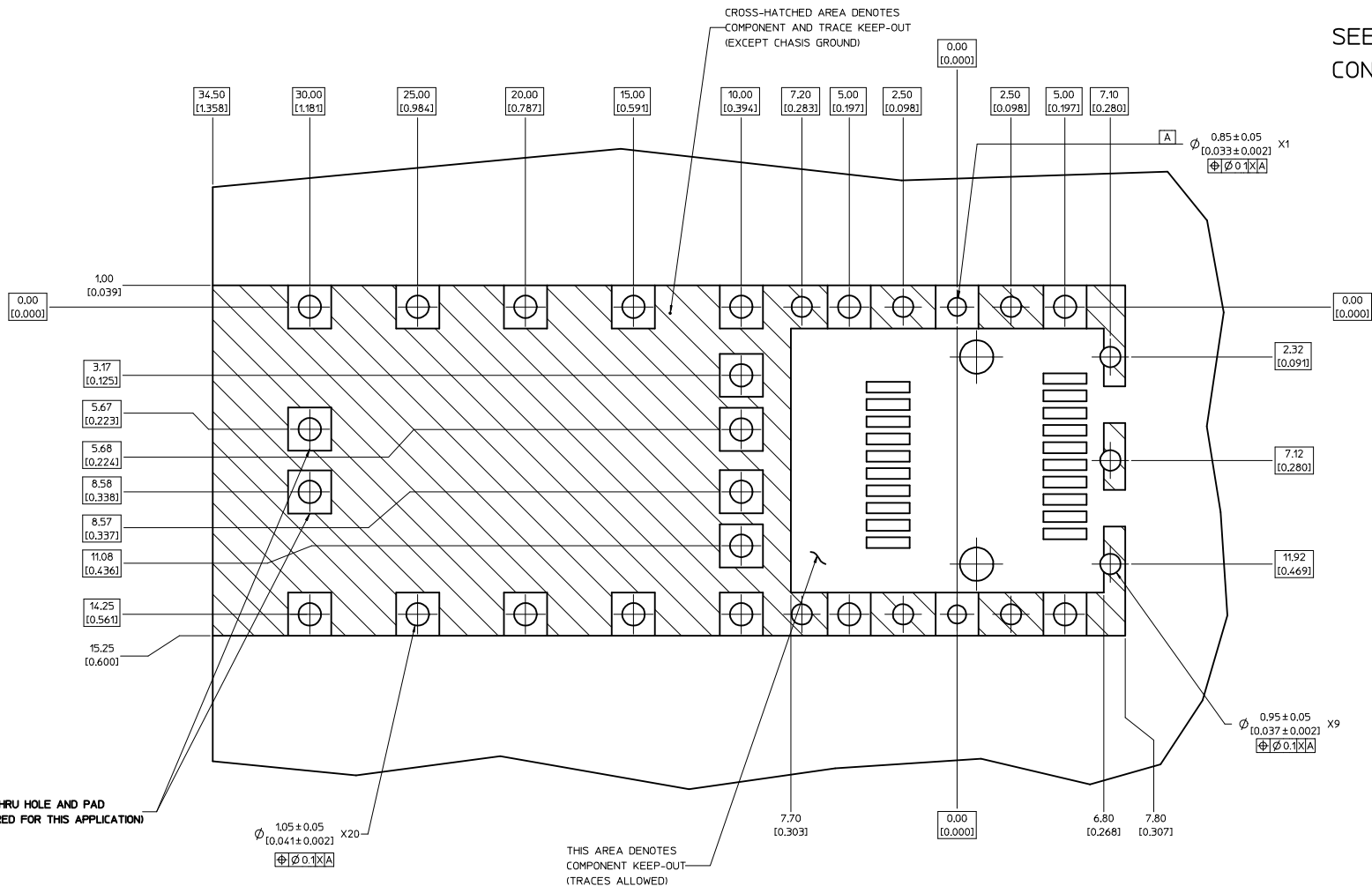


- NOTES:
- PADS AND VIAS GO TO CHASSIS GROUND
RECOMMEND PADS TO BE 2.00mm SQUARE.
 - DATUM AND BASIC DIMENSIONS ESTABLISHED BY CUSTOMER.
 - CONNECTOR PAD LAYOUT PER SFP MSA, WILL ACCOMODATE MOLEX CONNECTOR SERIES 74441 OR EQUIVALENT

FLATTENED EMI LEG EC NO. USY2009-0334 DRAWN BY CHYKDAJHNSON 2009/07/13 APPR:KJANDIA 2009/07/16	QUALITY SYMBOLS	GENERAL TOLERANCES (UNLESS SPECIFIED)	DIMENSION STYLE	SCALE	DESIGN UNITS	THIRD ANGLE PROJECTION
	$\nabla=0$ $\nabla=0$	4 PLACES ± mm ± INCH 3 PLACES ± --- ±.005 2 PLACES ± 0.13 ±.010 1 PLACE ± 0.25 ± --- ANGULAR ± 1 °	MM/IN	1:1	METRIC	
	DRAFT WHERE APPLICABLE MUST REMAIN WITHIN DIMENSIONS	DRAWN BY DATE CHIRSCHY 2007/07/13 CHECKED BY DATE BRUSSELL 2007/07/13 APPROVED BY DATE RAHMOOD 2007/07/13	TITLE	SFP ONE PIECE CAGE 0.090 PRESS FIT LEGS BELLY TO BELLY ASSEMBLY		
		MATERIAL NO. 747370026 DOCUMENT NO. SD-74737-0026	MOLEX INCORPORATED	SHEET NO.	2 OF 5	

20 19 18 17 16 15 14 13 12 11 10 9 8 7 6 5 4 3 2 1

SEE SHEET 2 FOR CONNECTOR LAYOUT



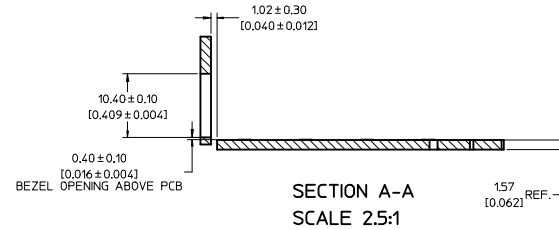
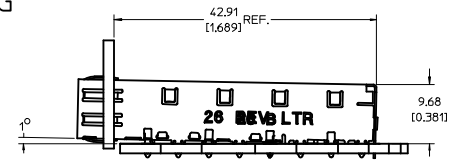
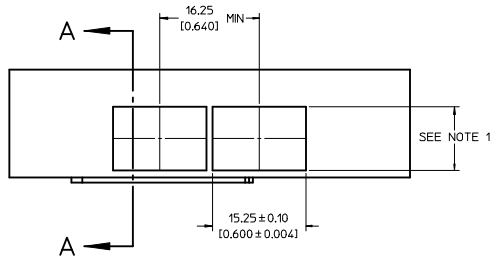
OPTIONAL THRU HOLE AND PAD
(NOT REQUIRED FOR THIS APPLICATION)

THIS AREA DENOTES
COMPONENT KEEP-OUT
(TRACES ALLOWED)

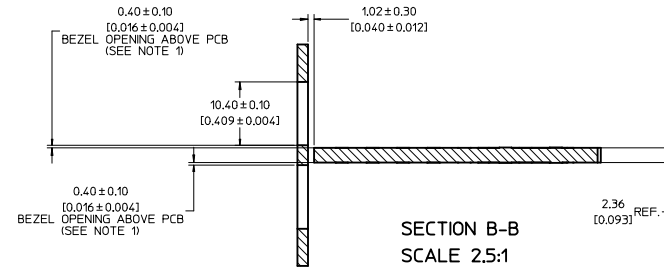
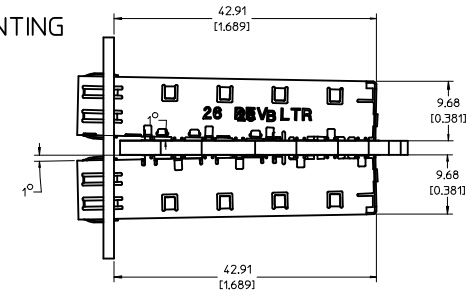
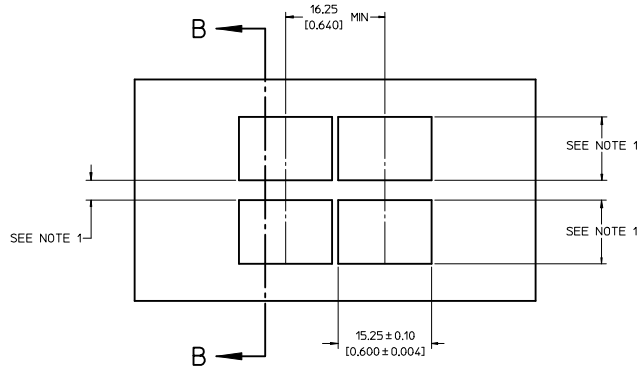
FLATTENED EMI LEG IEC NO. USY2009-0334 DRAWN BY CHYKDA JOHNSTON 2009/02/13 APPR: K. LANDTA 2009/02/16	QUALITY SYMBOLS	GENERAL TOLERANCES (UNLESS SPECIFIED)	DIMENSION STYLE	SCALE	DESIGN UNITS	THIRD ANGLE PROJECTION
	▽=0 ▽=0	mm INCH 4 PLACES ± --- ± --- 3 PLACES ± --- ± .005 2 PLACES ± 0.13 ± .010 1 PLACE ± 0.25 ± --- ANGULAR ± 1°	MM/IN	1:1	METRIC	DRAWN BY DATE CHIRSCHY 2007/07/13 CHECKED BY DATE BRUSSELL 2007/07/13 APPROVED BY DATE AMAHMOOD 2007/07/13
	DRAFT WHERE APPLICABLE MUST REMAIN WITHIN DIMENSIONS	MATERIAL NO. 747370026	TITLE SFP ONE PIECE CAGE 0.090 PRESS FIT LEGS BELLY TO BELLY ASSEMBLY	MOLEX INCORPORATED	SHEET NO. 3 OF 5	
	SIZE D	DOCUMENT NO. SD-74737-0026	THIS DRAWING CONTAINS INFORMATION THAT IS PROPRIETARY TO MOLEX INCORPORATED AND SHOULD NOT BE USED WITHOUT WRITTEN PERMISSION			

19 18 17 16 15 14 13 12 11 10 9 8 7 6 5 4 3 2 1

BEZEL AND BOARD POSITION DIMENSIONS FOR SINGLE SIDE MOUNTING



BEZEL AND BOARD POSITION DIMENSIONS FOR BELLY TO BELLY MOUNTING



NOTE:
PCB THICKNESS VARIATION MUST BE CONSIDERED WHEN DETERMINING
BEZEL OPENING, SIZE AND LOCATION

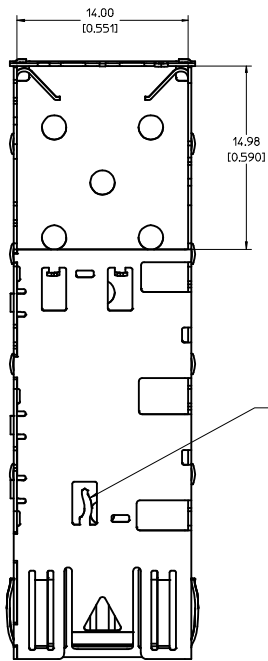
FLATTENED EMI LEG IEC NO. USY2009-0334 DRAWN BY CHYKDAJHNSTON 2009/02/13 APPR:K.LANDTA 2009/02/16	QUALITY SYMBOLS	GENERAL TOLERANCES (UNLESS SPECIFIED)	DIMENSION STYLE	SCALE	DESIGN UNITS	THIRD ANGLE PROJECTION
	▽=0 ▽=0	mm INCH 4 PLACES ± --- ± --- 3 PLACES ± --- ± .005 2 PLACES ± 0.13 ± .010 1 PLACE ± 0.25 ± --- ANGULAR ± 1 °	MM/IN	1:1	METRIC	
	DRAFT WHERE APPLICABLE MUST REMAIN WITHIN DIMENSIONS	DRAWN BY DATE CHIRSCY 2007/07/13 CHECKED BY DATE BRUSSELL 2007/07/13 APPROVED BY DATE RMAHMOOD 2007/07/13	TITLE	SFP ONE PIECE CAGE 0.090 PRESS FIT LEGS BELLY TO BELLY ASSEMBLY		MOLEX INCORPORATED
		MATERIAL NO. 747370026 DOCUMENT NO. SD-74737-0026	SIZE D	SHEET NO. 4 OF 5		

20 19 18 17 16 15 14 13 12 11 10 9 8 7 6 5 4 3 2 1

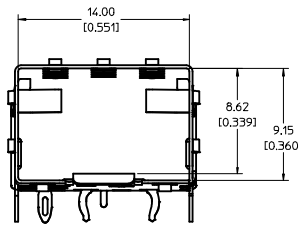
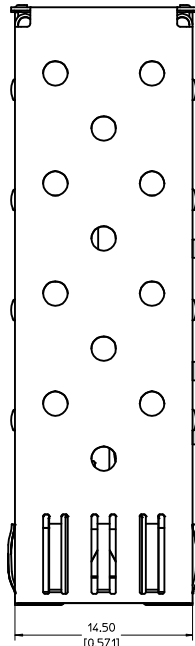
DATE	REV	DESCRIPTION
2007/07/13	A	INITIAL RELEASE
2009/02/10	B	UNFOLDED FRONT SINGLE EMI LEG FLAT

FLATTENED EMI LEG IEC NO: USY2009-0334 DRAWN BY: CHYKDA.JHNSTON 2009/02/13 CHECKED BY: APPR:K.LANDIA 2009/02/16	QUALITY SYMBOLS ◀=0 ▽=0	GENERAL TOLERANCES (UNLESS SPECIFIED) <table border="1"> <tr> <th></th> <th>mm</th> <th>INCH</th> </tr> <tr> <td>4 PLACES</td> <td>± ---</td> <td>± ---</td> </tr> <tr> <td>3 PLACES</td> <td>± ---</td> <td>± .005</td> </tr> <tr> <td>2 PLACES</td> <td>± 0.13</td> <td>± .010</td> </tr> <tr> <td>1 PLACE</td> <td>± 0.25</td> <td>± ---</td> </tr> </table> ANGULAR ± 1 °		mm	INCH	4 PLACES	± ---	± ---	3 PLACES	± ---	± .005	2 PLACES	± 0.13	± .010	1 PLACE	± 0.25	± ---	DIMENSION STYLE MM/IN	SCALE 1:1	DESIGN UNITS METRIC	THIRD ANGLE PROJECTION
		mm	INCH																		
	4 PLACES	± ---	± ---																		
	3 PLACES	± ---	± .005																		
2 PLACES	± 0.13	± .010																			
1 PLACE	± 0.25	± ---																			
DRAWN BY: CHIRSCHY 2007/07/13 CHECKED BY: BRUSSELL 2007/07/13 APPROVED BY: RMAHMOOD 2007/07/13	TITLE SFP ONE PIECE CAGE 0.090 PRESS FIT LEGS BELLY TO BELLY ASSEMBLY			MOLEX INCORPORATED		SHEET NO. 5 OF 5															
DRAFT WHERE APPLICABLE MUST REMAIN WITHIN DIMENSIONS			MATERIAL NO. 747370026	DOCUMENT NO. SD-74737-0026																	
THIS DRAWING CONTAINS INFORMATION THAT IS PROPRIETARY TO MOLEX INCORPORATED AND SHOULD NOT BE USED WITHOUT WRITTEN PERMISSION																					

19 18 17 16 15 14 13 12 11 10 9 8 7 6 5 4 3 2 1



EMI PIN REMAINS FLAT. NO THRU HOLE IN PCB NECESSARY.

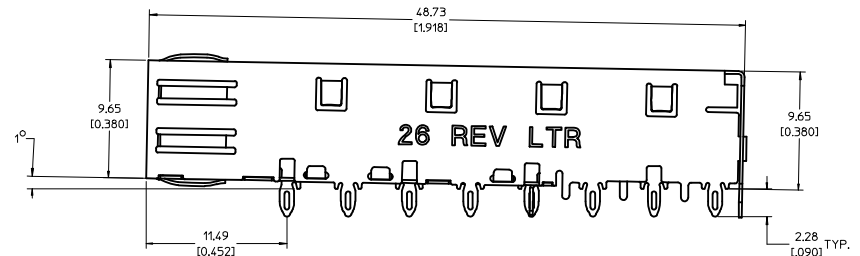
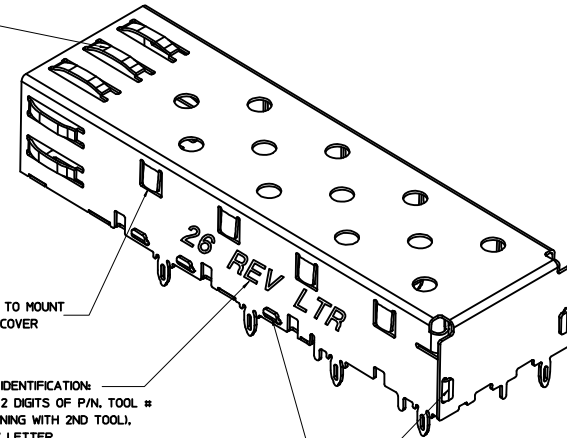


SPRING FINGER GASKET WITH TWO POINTS OF CONTACT. COMPLIES WITH SFP MSA BOARD AND BEZEL LOCATIONS

TABS USED TO MOUNT LIGHT PIPE COVER

CAGE IDENTIFICATION: LAST 2 DIGITS OF P/N, TOOL # (BEGINNING WITH 2ND TOOL), & REV LETTER. (EX: 26-2 X)

ONE PIECE DESIGN SECURELY FASTENED



NOTES:

- PRESS FIT LEGS, 0.090 INCHES LONG. 1.57 [0.062] MINIMUM PCB THICKNESS.
- CAN BE USED WITH THE FOLLOWING LIGHT PIPE PART NUMBERS:
 747260001 - LIGHT PIPE FROM BACK TO TOP (REFER TO DOCUMENT SD-74726-001)
 747260002 - LIGHT PIPE FROM SIDE TO TOP (REFER TO DOCUMENT SD-74726-002)
- MATERIAL: COPPER ALLOY
 PLATING: PRE-PLATED WITH NICKEL
- THIS PART MEETS THE RESTRICTION OF HAZARDOUS SUBSTANCES IN ELECTRICAL AND ELECTRONIC EQUIPMENT (ROHS) DIRECTIVE (2002/95/EC).

FLATTENED EMI LEG EC NO: USY2009-0334 DRAWN BY: CHYKDAJHNSON CHECKED BY: APPR:K.LANDIA DATE: 2009/02/13 DATE: 2009/02/16 DESCRIPTION:	QUALITY SYMBOLS	GENERAL TOLERANCES (UNLESS SPECIFIED)	DIMENSION STYLE	SCALE	DESIGN UNITS	THIRD ANGLE PROJECTION
	$\nabla=0$ $\nabla=0$	mm INCH 4 PLACES ± --- ± --- 3 PLACES ± --- ± .005 2 PLACES ± 0.13 ± .010 1 PLACE ± 0.25 ± --- ANGULAR ± 1 °	MM/IN	1:1	METRIC	
	DRAFT WHERE APPLICABLE MUST REMAIN WITHIN DIMENSIONS	DRAWN BY: CHIRSCHY CHECKED BY: BRUSSELL APPROVED BY: RMAHMOOD DATE: 2007/07/13 DATE: 2007/07/13 DATE: 2007/07/13	TITLE			SFP ONE PIECE CAGE 0.090 PRESS FIT LEGS BELLY TO BELLY ASSEMBLY
		MATERIAL NO: 747370026 DOCUMENT NO: SD-74737-0026	MOLEX INCORPORATED			SHEET NO: 1 OF 5

M

L

K

J

I

H

G

F

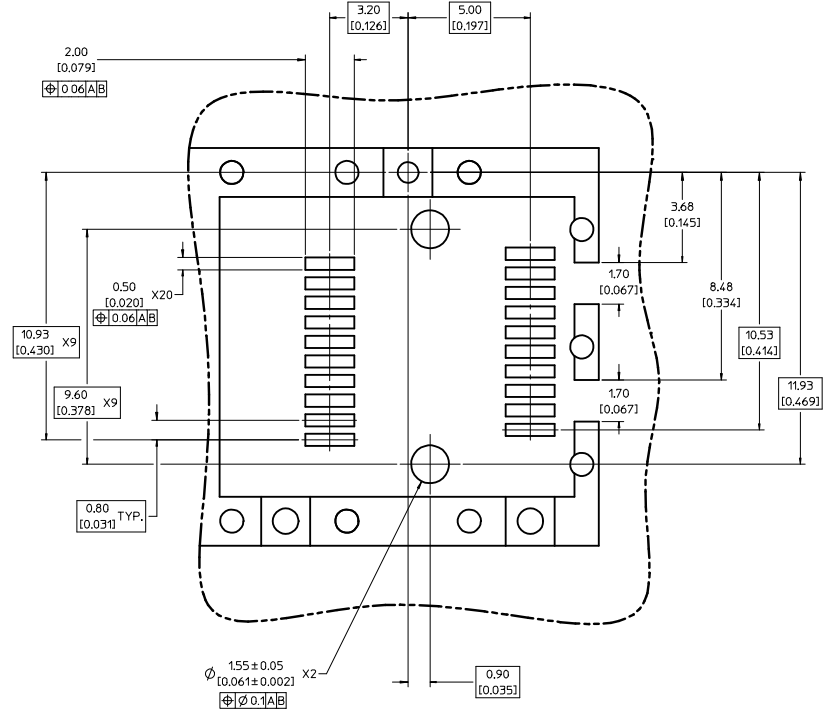
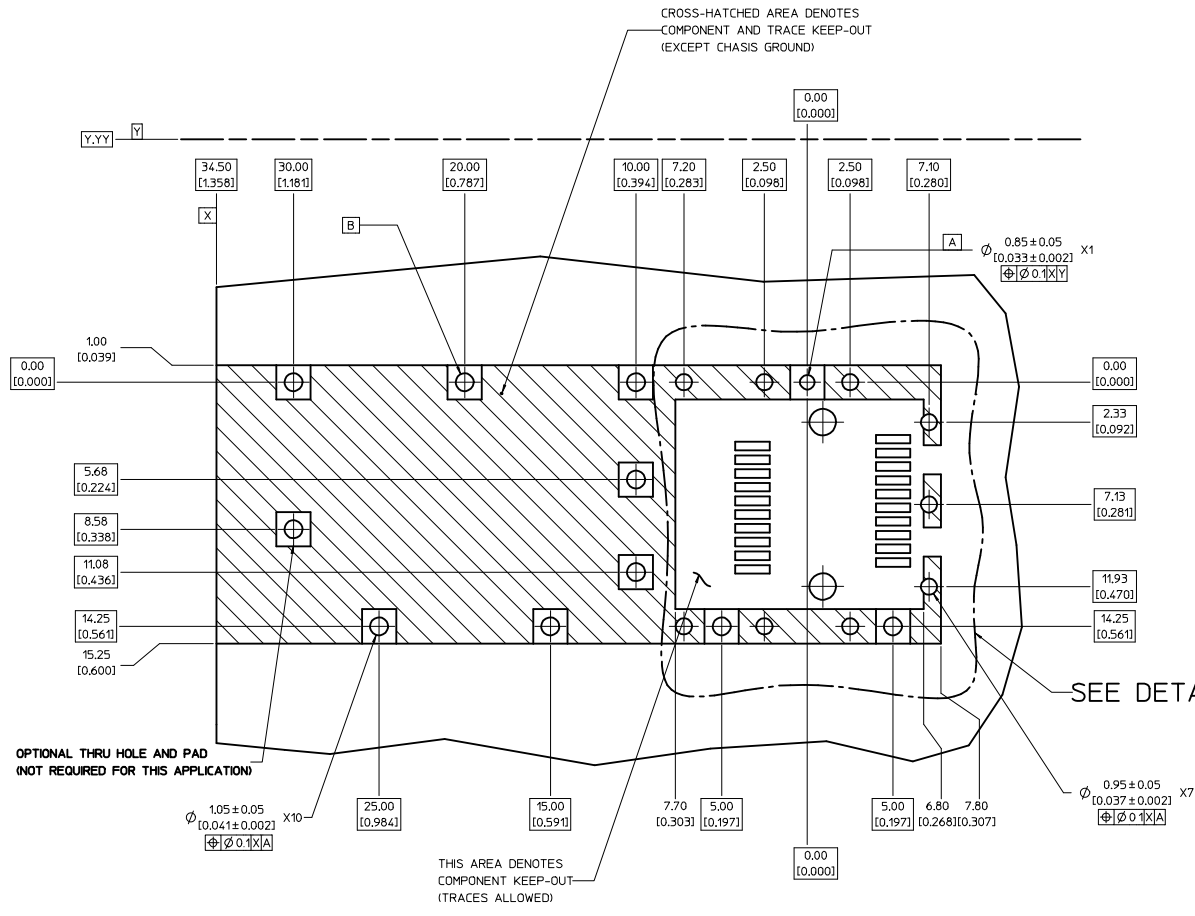
E

D

C

B

A

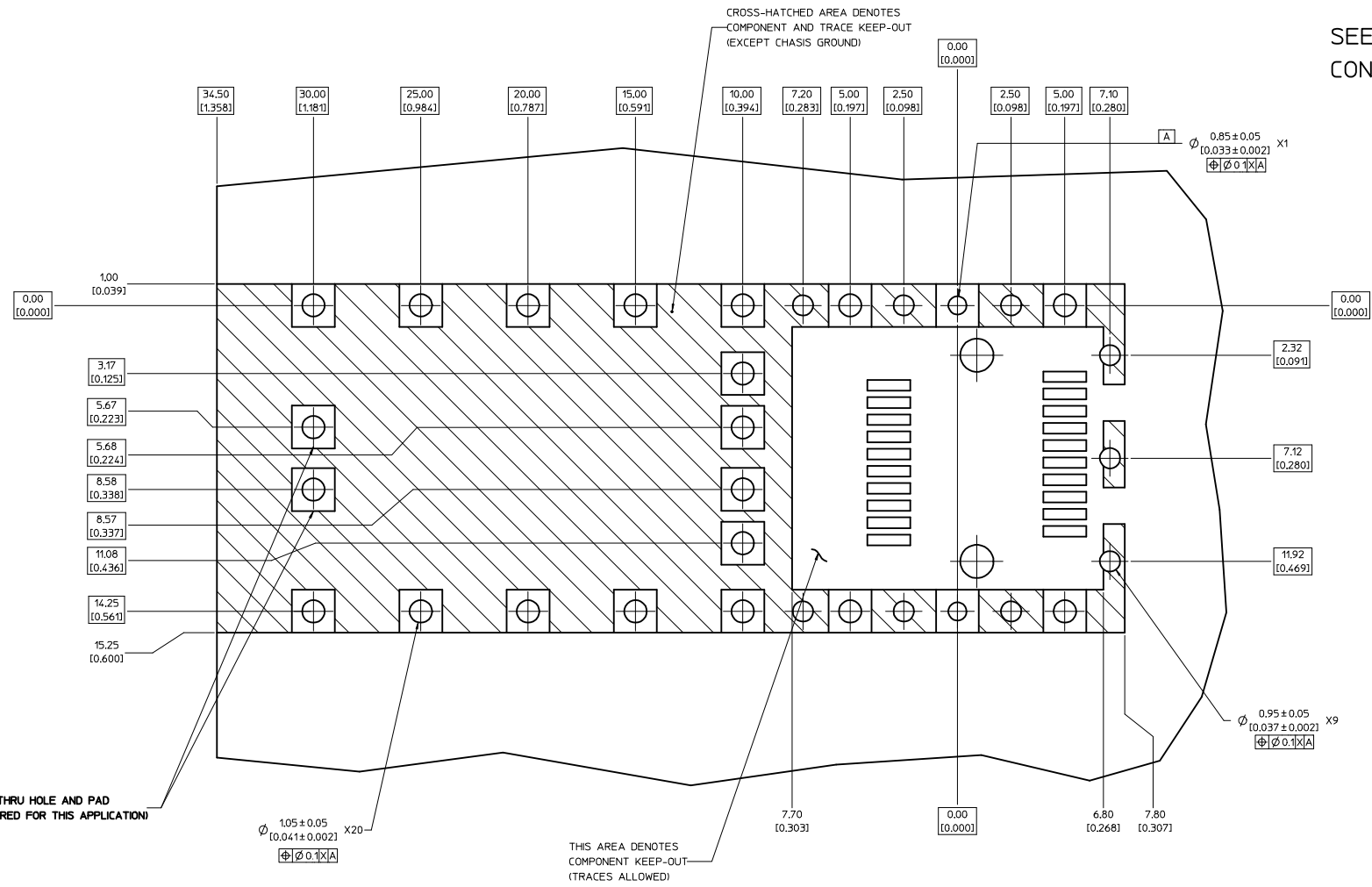


- NOTES:**
1. PADS AND VIAS GO TO CHASSIS GROUND
RECOMMEND PADS TO BE 2.00mm SQUARE.
 2. DATUM AND BASIC DIMENSIONS ESTABLISHED BY CUSTOMER.
 3. CONNECTOR PAD LAYOUT PER SFP MSA, WILL ACCOMODATE MOLEX CONNECTOR SERIES 74441 OR EQUIVALENT

FLATTENED EMI LEG EC NO. USY2009-0334 DRAWN BY CHYKDAJHNSON 2009/07/13 APPR:KJANDIA 2009/07/16	QUALITY SYMBOLS	GENERAL TOLERANCES (UNLESS SPECIFIED)	DIMENSION STYLE	SCALE	DESIGN UNITS	THIRD ANGLE PROJECTION
	▽=0 ▽=0	mm INCH 4 PLACES ± --- ± --- 3 PLACES ± --- ± .005 2 PLACES ± 0.13 ± .010 1 PLACE ± 0.25 ± --- ANGULAR ± 1 °	MM/IN 1:1	METRIC	DATE TITLE CHIRSCHY 2007/07/13 BRUSSELL 2007/07/13 APPROVED BY DATE RMAHMOOD 2007/07/13	MOLEX INCORPORATED
	DRAFT WHERE APPLICABLE MUST REMAIN WITHIN DIMENSIONS	MATERIAL NO. 747370026 SIZE D	DOCUMENT NO. SD-74737-0026	SHEET NO. 2 OF 5		

20 19 18 17 16 15 14 13 12 11 10 9 8 7 6 5 4 3 2 1

SEE SHEET 2 FOR CONNECTOR LAYOUT



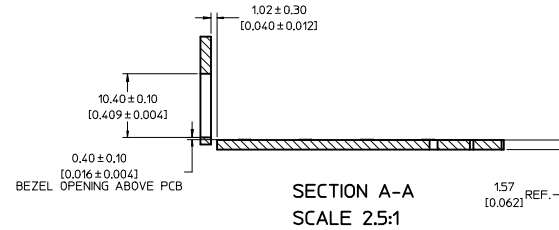
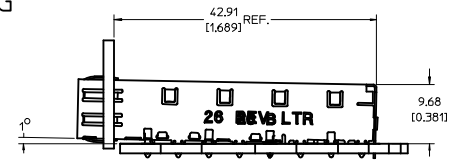
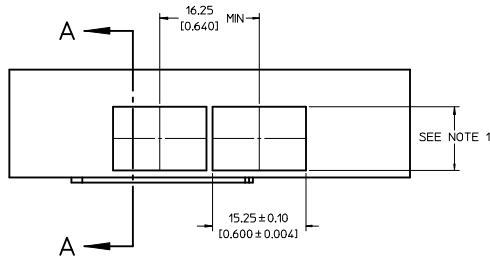
OPTIONAL THRU HOLE AND PAD
NOT REQUIRED FOR THIS APPLICATION

THIS AREA DENOTES
COMPONENT KEEP-OUT
(TRACES ALLOWED)

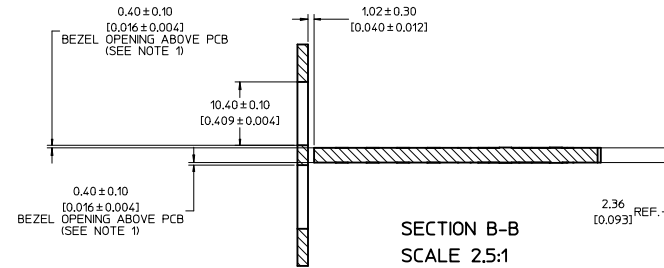
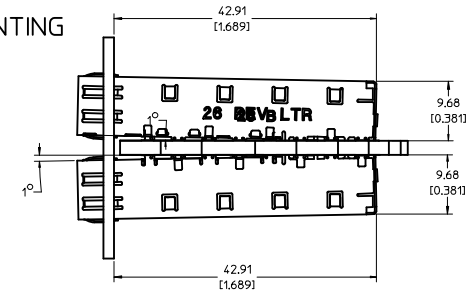
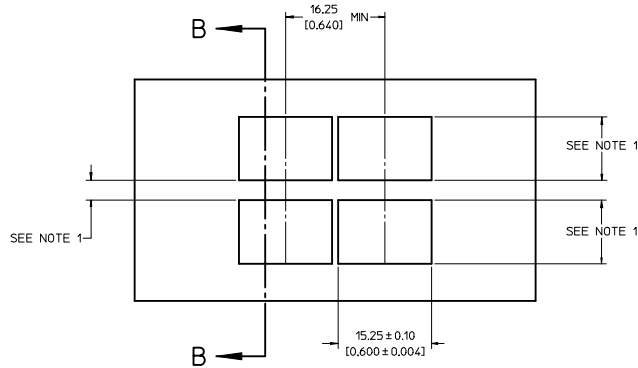
FLATTENED EMI LEG IEC NO. USY2009-0334 DRAWN BY CHYKDA JOHNSTON 2009/02/13 CHECKED BY APPR: K LANDTA 2009/02/16 DESCRIPTION	QUALITY SYMBOLS	GENERAL TOLERANCES (UNLESS SPECIFIED)	DIMENSION STYLE	SCALE	DESIGN UNITS	THIRD ANGLE PROJECTION
	▽=0 ▽=0	mm INCH 4 PLACES ± --- ± --- 3 PLACES ± --- ± .005 2 PLACES ± 0.13 ± .010 1 PLACE ± 0.25 ± --- ANGULAR ± 1 °	MM/IN	1:1	METRIC	DRAWN BY DATE CHIRSCHY 2007/07/13 CHECKED BY DATE BRUSSELL 2007/07/13 APPROVED BY DATE RMAHMOOD 2007/07/13
	DRAFT WHERE APPLICABLE MUST REMAIN WITHIN DIMENSIONS	MATERIAL NO. 747370026	TITLE SFP ONE PIECE CAGE 0.090 PRESS FIT LEGS BELLY TO BELLY ASSEMBLY	MOLEX INCORPORATED	DOCUMENT NO. SD-74737-0026	SHEET NO. 3 OF 5
	THIS DRAWING CONTAINS INFORMATION THAT IS PROPRIETARY TO MOLEX INCORPORATED AND SHOULD NOT BE USED WITHOUT WRITTEN PERMISSION					

19 18 17 16 15 14 13 12 11 10 9 8 7 6 5 4 3 2 1

BEZEL AND BOARD POSITION DIMENSIONS FOR SINGLE SIDE MOUNTING



BEZEL AND BOARD POSITION DIMENSIONS FOR BELLY TO BELLY MOUNTING



NOTE:
PCB THICKNESS VARIATION MUST BE CONSIDERED WHEN DETERMINING
BEZEL OPENING, SIZE AND LOCATION

FLATTENED EMI LEG IEC NO. USY2009-0334 DRAWN BY CHYKDAJHNSTON CHECKED BY APPR:KJANDIA DATE 2009/02/13 DATE 2009/02/16	QUALITY SYMBOLS	GENERAL TOLERANCES (UNLESS SPECIFIED)	DIMENSION STYLE	SCALE	DESIGN UNITS	THIRD ANGLE PROJECTION
	$\nabla=0$ $\nabla=0$	mm INCH 4 PLACES ± --- ± --- 3 PLACES ± --- ± .005 2 PLACES ± 0.13 ± .010 1 PLACE ± 0.25 ± --- ANGULAR ± 1 °	MM/IN	1:1	METRIC	
	DRAFT WHERE APPLICABLE MUST REMAIN WITHIN DIMENSIONS	DRAWN BY DATE CHIRSCY 2007/07/13 CHECKED BY DATE BRUSSELL 2007/07/13 APPROVED BY DATE RMAHMOOD 2007/07/13	TITLE			SFP ONE PIECE CAGE 0.090 PRESS FIT LEGS BELLY TO BELLY ASSEMBLY
		MATERIAL NO. 747370026 DOCUMENT NO. SD-74737-0026	MOLEX INCORPORATED			SHEET NO. 4 OF 5

20 19 18 17 16 15 14 13 12 11 10 9 8 7 6 5 4 3 2 1

DATE	REV	DESCRIPTION
2007/07/13	A	INITIAL RELEASE
2009/02/10	B	UNFOLDED FRONT SINGLE EMI LEG FLAT

FLATTENED EMI LEG IEC NO: USY2009-0334 DRAWN BY: CHYKDA JOHNSTON 2009/02/13 APPR: K LANDIA 2009/02/16	QUALITY SYMBOLS 	GENERAL TOLERANCES (UNLESS SPECIFIED) <table border="1"> <tr> <th></th> <th>mm</th> <th>INCH</th> </tr> <tr> <td>4 PLACES</td> <td>± .005</td> <td>± .0005</td> </tr> <tr> <td>3 PLACES</td> <td>± .010</td> <td>± .0010</td> </tr> <tr> <td>2 PLACES</td> <td>± 0.13</td> <td>± .010</td> </tr> <tr> <td>1 PLACE</td> <td>± 0.25</td> <td>± .010</td> </tr> <tr> <td colspan="3">ANGULAR ± 1 °</td> </tr> </table>		mm	INCH	4 PLACES	± .005	± .0005	3 PLACES	± .010	± .0010	2 PLACES	± 0.13	± .010	1 PLACE	± 0.25	± .010	ANGULAR ± 1 °			DIMENSION STYLE MM/IN	SCALE 1:1	DESIGN UNITS METRIC	THIRD ANGLE PROJECTION
		mm	INCH																					
	4 PLACES	± .005	± .0005																					
	3 PLACES	± .010	± .0010																					
2 PLACES	± 0.13	± .010																						
1 PLACE	± 0.25	± .010																						
ANGULAR ± 1 °																								
DRAWN BY: CHIRSCHY 2007/07/13 CHECKED BY: BRUSSELL 2007/07/13 APPROVED BY: RMAHMOOD 2007/07/13	TITLE SFP ONE PIECE CAGE 0.090 PRESS FIT LEGS BELLY TO BELLY ASSEMBLY			MOLEX INCORPORATED																				
DRAFT WHERE APPLICABLE MUST REMAIN WITHIN DIMENSIONS			MATERIAL NO: 747370026	DOCUMENT NO: SD-74737-0026																				
SIZE D			THIS DRAWING CONTAINS INFORMATION THAT IS PROPRIETARY TO MOLEX INCORPORATED AND SHOULD NOT BE USED WITHOUT WRITTEN PERMISSION																					

19 18 17 16 15 14 13 12 11 10 9 8 7 6 5 4 3 2 1