

PRODUCT DESCRIPTION CODE :

10143578-1XXK LF

RoHS COMPATIBLE, SEE NOTE 3

FOR CUSTOMER CODE :  
BLANK = GENERAL USE

PACKAGING :

K = TAPE & REEL

A = TAPE & REEL WITH MYLAR

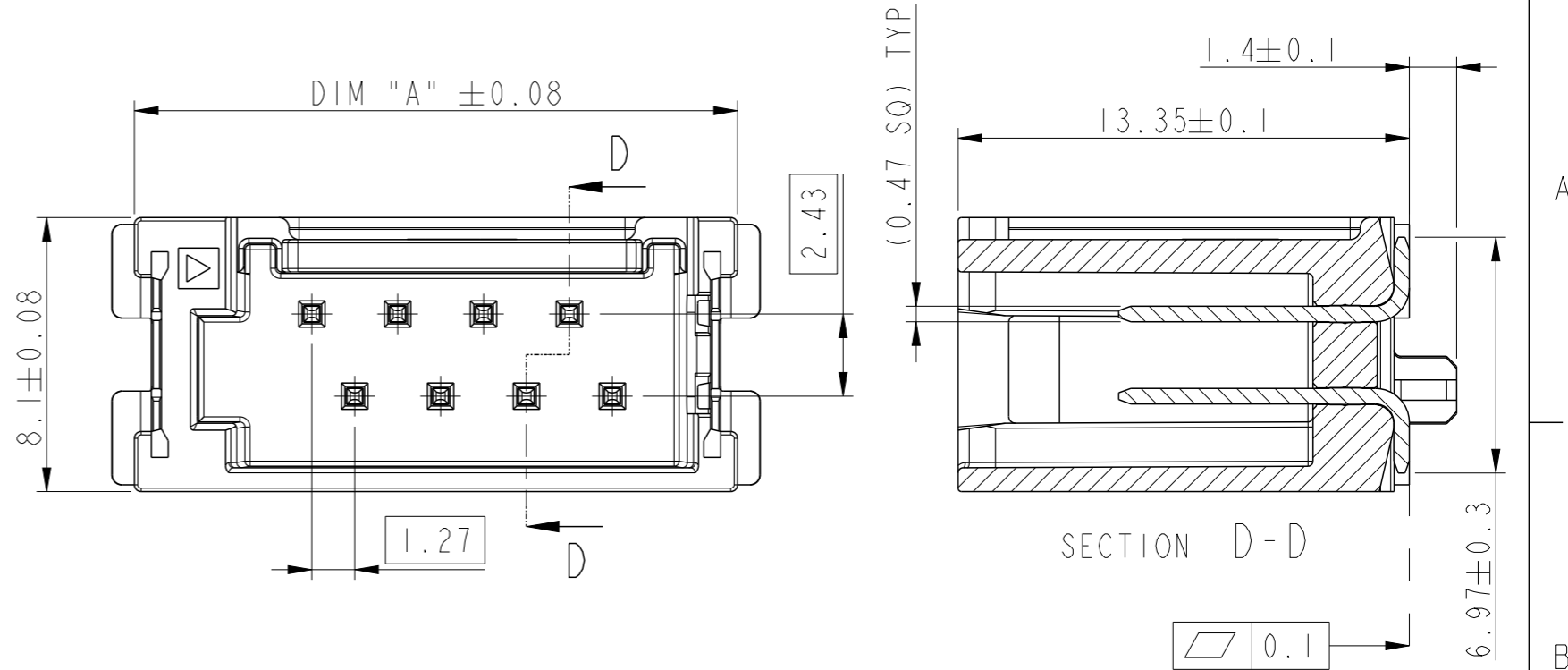
NUMBER OF POSITIONS : 02 TO 16

PLATING :

1 = 3µm MIN MATTE TIN (PREPLATED)

2 = 3µm MIN MATTE TIN (POST-PLATED)

ALL OVER 1.27µm MIN NICKEL UNDERLAYER



A

B

NOTES:

1 - MATERIAL:

HOUSING : HIGH TEMPERATURE THERMOPLASTIC  
COLOR BLACK UL94 V-0

PIN : HIGH CURRENT COPPER ALLOY

2 - TO MATED WITH MINITEK µSPACE RECEPTACLE SERIES  
10142632

3 - RoHS COMPATIBLE PRODUCT SPECIFICATIONS

a - PLATING:

"LF" MEANS THE PRODUCT IS LEAD FREE,  
3µm MINIMUM MATTE TIN OVER 1.27µm MINIMUM  
NICKEL UNDERPLATE.

b - MANUFACTURING PROCESS COMPATIBILITY:

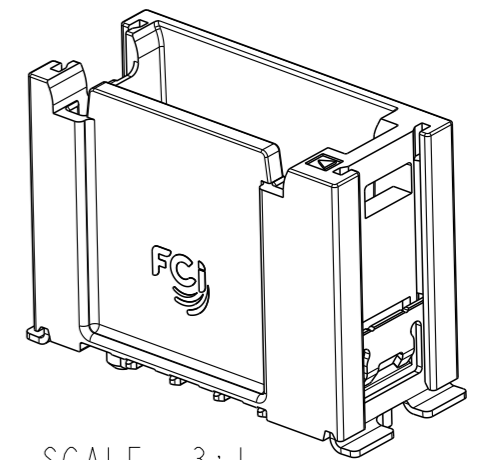
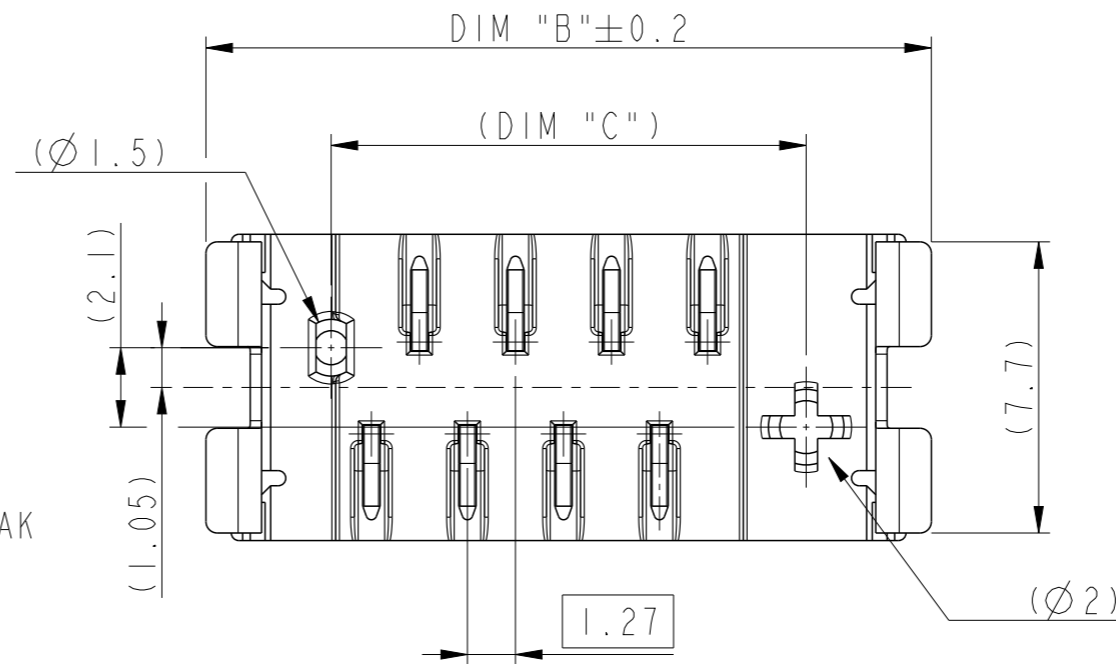
THE HOUSING WILL WITHSTAND EXPOSURE TO 260°C PEAK  
TEMPERATURE FOR 30 SECONDS MAX IN A CONVECTION,  
INFRA-RED OR VAPOR PHASE OR REFLOW OVEN.

c - LABELLING :

MEETS PACKAGING SPECS AS PER GS-14-920

d - LEGAL STATEMENT :

SEE GS-47-0004.



C

D

spec ref	GS-12-1422	dr	Ramu P	2018/07/10	projection	mm	size	A3	scale	5:1
tolerance std	ISO 406 ISO 1101	eng	Moisan, Gwenda	2023/05/22			ecn no	ELX-F-48312-1		
surface	TOLERANCES UNLESS OTHERWISE SPECIFIED linear 0.X ±0.3 0.XX ±0.10 0.XXX ±0.005 angular 0° ±2°	chr	Robert, Christ	2023/05/23				product family	rel level	Released
		appr	Lamy, Alexandr	2023/05/23	Amphenol FCI HEADER ASSEMBLY MINITEK µSPACE VERT. STG SIDE LATCH	dwg no 10143578	rev C			
ISO 1302		cat. no.		-		Product - Customer Drw		sheet 1 of 3		

A

B

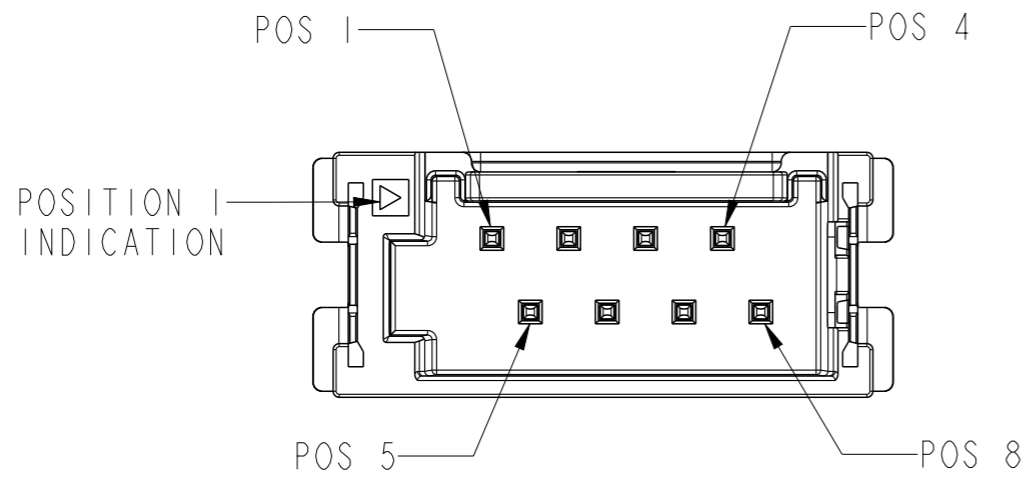
C

D

Amphenol FCI

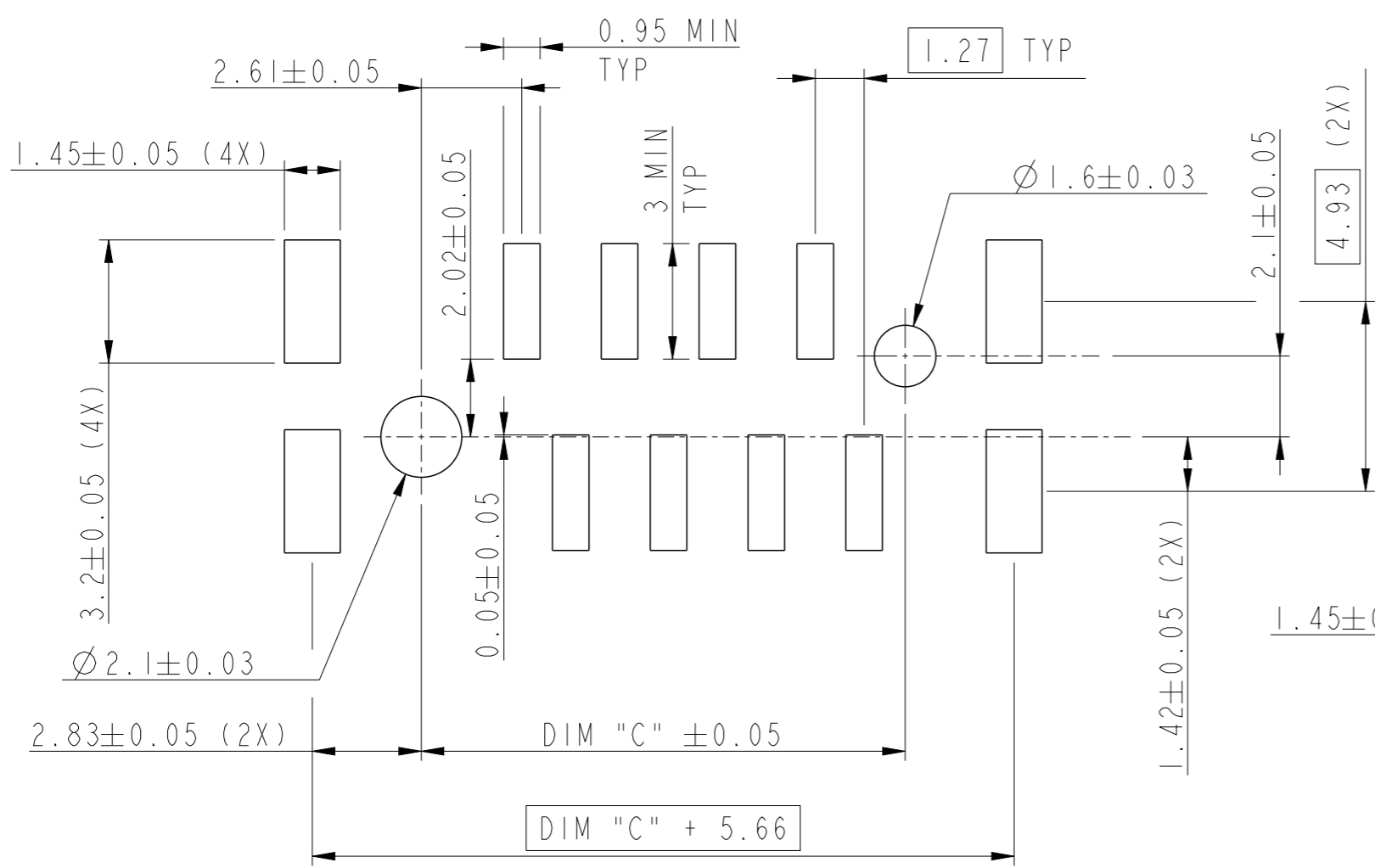
© 2020 Amphenol Corporation

PART NO	NO. OF POSN	DIM "A"	DIM "B"	DIM "C"
10143578-102KLF	02	10.22	11.56	04.94
10143578-103KLF	03	11.49	12.83	06.21
10143578-104KLF	04	12.76	14.10	07.48
10143578-105KLF	05	14.03	15.37	08.75
10143578-106KLF	06	15.30	16.64	10.02
10143578-107KLF	07	16.57	17.91	11.29
10143578-108KLF	08	17.84	19.18	12.56
10143578-109KLF	09	19.11	20.45	13.83
10143578-110KLF	10	20.38	21.72	15.10
10143578-111KLF	11	21.65	22.99	16.37
10143578-112KLF	12	22.92	24.26	17.64
10143578-113KLF	13	24.19	25.53	18.91
10143578-114KLF	14	25.46	26.80	20.18
10143578-115KLF	15	26.73	28.07	21.45
10143578-116KLF	16	28.00	29.34	22.72

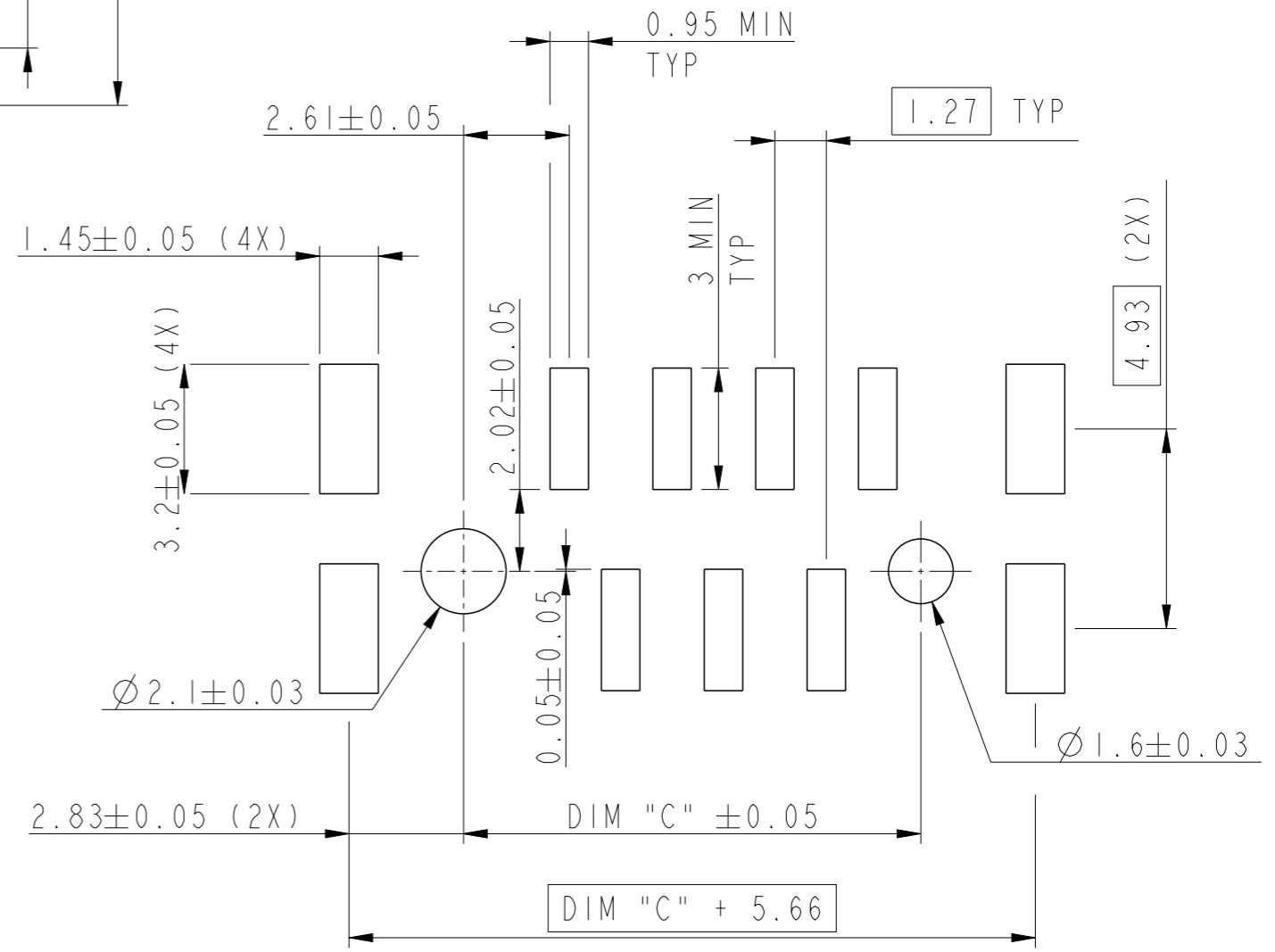


POSITION NUMBER INDICATION FOR 8POS VERSION

spec ref	GS-12-1422		dr	Ramu P	2018/07/10	projection 	mm ←→	size	A3	scale	6:1
tolerance std	ISO 406 ISO 1101		eng	Moisan, Gwenda	2023/05/22			ecn no	ELX-F-48312-1		
TOLERANCES UNLESS OTHERWISE SPECIFIED		chr	Robert, Christ	2023/05/23	product family			rel level	Released		
surface	linear	0.X	±0.3	Amphenol FCi	HEADER ASSEMBLY		dwg no	10143578		rev	C
		0.XX	±0.10		MINITEK μSPACE VERT. STG SIDE LATCH						
ISO 1302	angular	0°	±2°		cat. no.	-					



RECOMMENDED PCB LAYOUT FOR 02,04,06,08,10,12,14,16 POS



RECOMMENDED PCB LAYOUT FOR 03,05,07,09,11,13,15 POS

spec ref	GS-12-1422			dr	Ramu P	2018/07/10	projection	mm	size	A3	scale	5:1	
tolerance std	TOLERANCES UNLESS OTHERWISE SPECIFIED			eng	Moisan, Gwenda	2023/05/22			ecn no			ELX-F-48312-1	
ISO 406 ISO 1101				chr	Robert, Christ	2023/05/23			rel level			Released	
surface	<input checked="" type="checkbox"/> linear <input type="checkbox"/> angular	0.X	±0.3	<b>Amphenol FCi</b>	product family			-			title HEADER ASSEMBLY MINITEK μSPACE VERT. STG SIDE LATCH cat. no. - Product - Customer Drw	dwg no 10143578	rev C
ISO 1302		0.XX	±0.10		-			-					
	0.XXX	±0.005	-			-			sheet 3 of 3				
		0°	±2°										