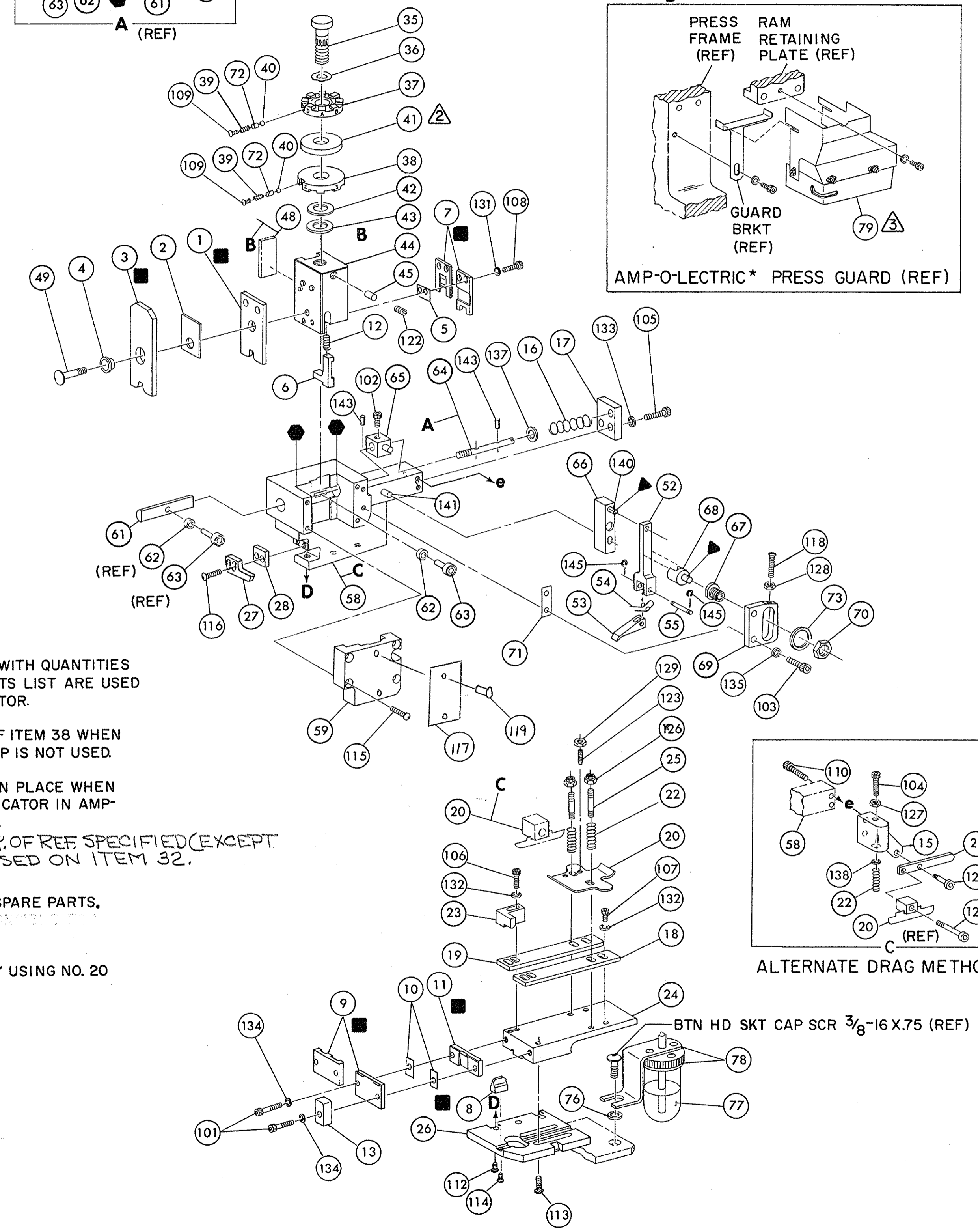
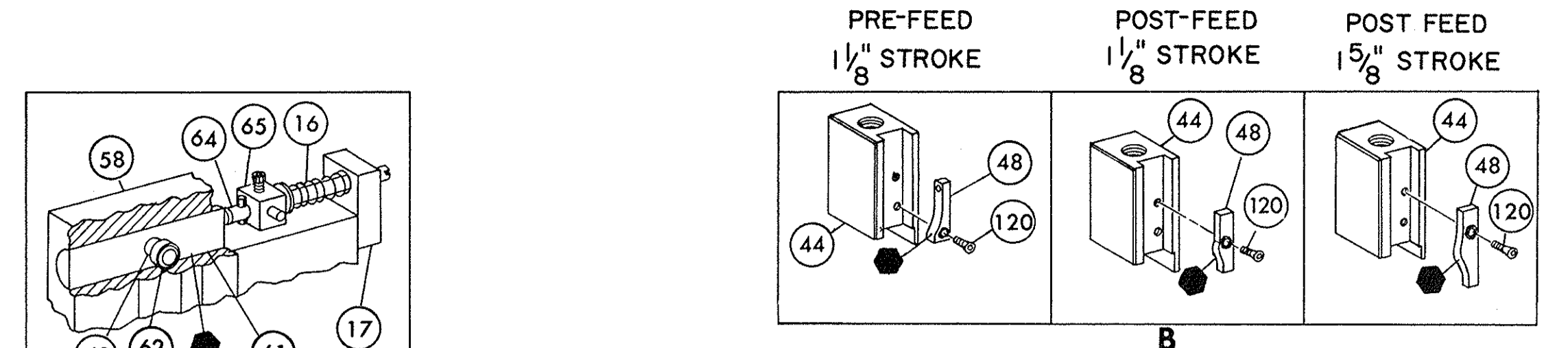


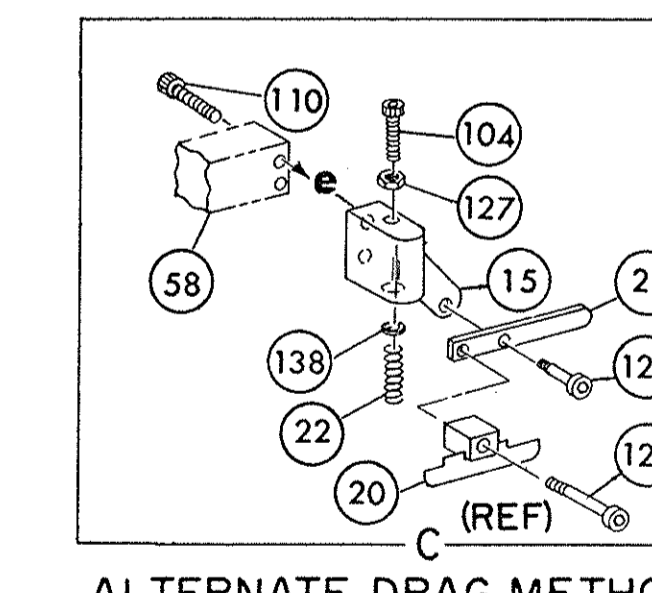
THIS IS A CONTROLLED DOCUMENT.

RELEASED FOR DISTRIBUTION: 11/29/07
 BY AMP INCORPORATED. ALL RIGHTS RESERVED.
 COPYRIGHT © 2001



NOTES:

- ONLY THE ITEMS WITH QUANTITIES SPECIFIED ON PARTS LIST ARE USED ON THIS APPLICATOR.
 - Δ** USED IN PLACE OF ITEM 38 WHEN INSULATION CRIMP IS NOT USED.
 - Δ** GUARD MUST BE IN PLACE WHEN OPERATING APPLICATOR IN AMP-O-LECTRIC PRESS.
 - PARTS WITH QTY. OF REF SPECIFIED (EXCEPT ITEM 79) ARE USED ON ITEM 32.
- KEY:
- RECOMMENDED SPARE PARTS.
 - ▲ LUBRICATE DAILY USING NO. 20 MACHINE OIL.
 - GREASE LIGHTLY.

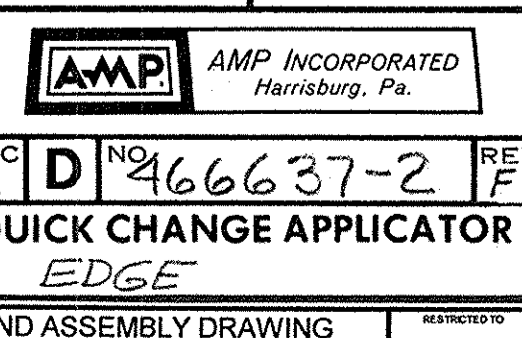


REF.	PART NO	DESCRIPTION	ITEM NO	QTY	PART NO	DESCRIPTION	ITEM NO
REF.	21045-3	RING, RETAINING 'C' (.187 DIA) FEED PIN	145	REF.	454220-1	CAP, RAM	59
REF.	5-21028-1	PIN, SLOT SPG (.12 DIA X .50) FD ADJ ROD	143	REF.	453736-1	HOUSING	58
REF.	1-21030-7	PIN, DOWEL (.187 DIA X 1.50) HOUSING	141				57
REF.	1-21030-1	PIN, DOWEL (.187 DIA X .50) LEVER	140				56
-	22260-5	WASHER, FLAT (NO 6) DRAG SPRING	138				55
REF.	21899-4	WASHER, FLAT (5/16 DIA) SCR ADJ	137				54
REF.	21024-5	WASHER, LOCK (NO 10) FEED ADJ PLATE	135	1	7-21002-9	BOLT, CRIMPER	49
2	21024-5	WASHER, LOCK (NO 10) SHEAR PLATES	134	1	690602-5	CAM, PRE FEED 1/8 STROKE	48
REF.	21024-5	WASHER, LOCK (NO 10) FEED ROD GUIDE	133				47
5	21024-4	WASHER, LOCK (NO 8) STRIP GUIDE	132				46
2	21024-4	WASHER, LOCK (NO 8) SHEAR BLADE	131	1	690191-1	PLUG, NYLON	45
			130	1	455674-1	RAM	44
2	21018-4	NUT, HEX MACH (4-40) DRAG	129	1	690125-1	WASHER, LAMINATED	43
REF.	21068-5	NUT, HEX MACH (6-32) FD ADJ PLATE	128	1	690124-1	WASHER, RAM	42
-	21018-7	NUT, HEX MACH (10-32) DRAG SPRING	127			SPACER, DISC	41
2	21022-2	NUT, HEX SELF-LKG (8-32) DRAG STUD	126	2	23241-6	BALL, STEEL	40
-	5-21004-7	SCR, SKT HD SHLD (250 DIA X .25) DRAG ARM	125	2	690170-1	SPRING, COMPRESSION	39
-	21004-5	SCR, SKT HD SHLD (250 DIA X 1.00) DRAG	124	1	690142-1	DISC, INSULATION	38
2	4-21078-8	SCR, SKT SET OVAL POINT (4-40 X .75) DRAG	123	1	1-692155-5	DISC, WIRE	37
1	21009-2	SCR, SKT SET (1/4-20 X 25) (LOC-WEL) RAM	122	1	22480-5	WASHER, SPRING	36
			121	1	690212-1	POST, RAM	35
1	2-21003-0	SCR, FLAT HD SKT CAP (6-32 X .38) CAM	120				34
2	21017-2	SCR, DR (# 2 x .19) ID PLATE	119				33
REF.	3-21064-2	SCR, RD HD MACH (6-32 X 1.50) FEED ADJ PLATE, ID.	118	1	458980-1	APPLICATOR, BASIC (SUB ASSY)	32
1	461264-1	PLATE, ID.	117				31
2	2-21002-2	SCR, BTN HD SKT CAP (8-32 X .50) STRIPPER	116				30
REF.	2-21002-9	SCR, BTN HD SKT CAP (10-32 X .75) HSG CAP	115				29
1	22733-8	SCR, BTN HD SKT CAP (8-32 X .38) (LOC-WEL) ANVIL	114	1	3-690451-2	SPACER, STRIPPER	28
4	3-21002-3	SCR, BTN HD SKT CAP (1/4-20 X .50) STR GDE PL	113	1	240639-1	STRIPPER	27
REF.	1-24073-9	SCR, BTN HD SKT CAP (1/4-20 X .75) BASE PL	112	REF.	455676-1	PLATE, BASE	26
			111	2	22354-8	DRAG, STUD	25
-	2-21000-4	SCR, SKT HD CAP (6-32 X 1.00) DRAG ADAPTOR	110	1	455678-1	PLATE, STRIP GUIDE	24
2	23030-1	SCR, SKT HD CAP (6-32 X .25) (LOC-WEL) CP DISC	109	1	240825-4	PLATE, STRIP HOLD	23
2	2-21000-6	SCR, SKT HD CAP (8-32 X .38) SHEAR BLADE	108	2	4-22281-1	SPRING, DRAG	22
3	7-21000-4	SCR, SKT HD CAP (8-32 X .31) STRIP GUIDE	107	-	240636-1	LEVER, DRAG	21
2	2-21000-8	SCR, SKT HD CAP (8-32 X .62) STRIP GUIDE	106	1	454177-1	DRAG, STOCK	20
REF.	3-21000-7	SCR, SKT HD CAP (10-32 X .75) FD ROD GUIDE	105	1	454204-6	GUIDE, STRIP (REAR)	19
-	3-21000-9	SCR, SKT HD CAP (10-32 X 1.00) DRAG SPRING	104	1	454204-6	GUIDE, STRIP (FRONT)	18
REF.	3-21000-6	SCR, SKT HD CAP (10-32 X .62) FD ADJ PLATE	103	REF.	454178-1	GUIDE, FEED ROD	17
REF.	3-21000-4	SCR, SKT HD CAP (10-32 X .38) PIVOT BLK	102	REF.	4-22284-9	SPRING, FEED RETURN	16
2	3-21000-8	SCR, SKT HD CAP (10-32 X .88) SHEAR PLATE	101	-		ADAPTER, DRAG	15
REF.	455745-1	GUARD, WINDOW	79				14
-	465184-9	LUBRICATOR ASSY	78	1	690481-6	SPACER, HOLD DOWN	13
-	455985-1	OIL, LUBRICATING	77	1	23846-1	SPRING, HOLD DOWN	12
-	454406-1	SPACER, LUB BRACKET	76	1	240644-1	PLATE, REAR SHEAR	11
			75			SPACER, SHEAR PLATE	10
			74	1	690496-1	PLATE, FRONT SHEAR	9
REF.	458109-1	WASHER, FLAT (SPECIAL)	73	1	7-238005-9	ANVIL	8
2	690603-1	SPRING, ASSIST	72	1	690474-6	BLADE, SLUG	7
REF.	690517-1	SPACER	71	1	2-455892-0	HOLD DOWN, TERMINAL	6
			70			SPACER, SHEAR BLADE	5
			69			SPACER, TUBULAR	4
			68	1	238009-4	CRIMPER, INSULATION	3
			67	1	1-456135-7	CRIMPER, INSULATION	3
			66	1	455888-3	SPACER, INSULATION	2
			65	1	1-456406-8	CRIMPER, WIRE	1
			64				
			63				
			62				
			61				
			60				
			59				
			58				
			57				
			56				
			55				
			54				
			53				
			52				
			51				
			50				
			49				
			48				
			47				
			46				
			45				
			44				
			43				
			42				
			41				
			40				
			39				
			38				
			37				
			36				
			35				
			34				
			33				
			32				
			31				
			30				
			29				
			28				
			27				
			26				
			25				
			24				
			23				
			22				
			21				
			20				
			19				
			18				
			17				
			16				
			15				
			14				
			13				
			12				
			11				
			10				
			9				
			8				
			7				
			6				
			5				
			4				
			3				
			2				
			1				

REMARKS		NO	REV
TO APPLY TERMINAL			
APPL USED ON MACHINE PART NO	MACH SERIAL NO	DISTRIBUTION	
CUSTOMER NAME	APPL SERIAL NO	ORIGINAL	
ADDRESS	PURCHASE ORDER	CUSTOMER COPY	
CITY	ENG APP	FIELD ENG COPY	

CRIMPING DATA				APPLICATOR WILL APPLY	
PAD LTR	CRIMP HEIGHT	WIRE SIZE	WIRE LENGTH		
A	.055	18		60156	
B	.050	20		60704	
C	.048	22			
D	NOT USED				
CRIMP	SIZE	TYPE	FEED	APPL INST	
WIRE	.090	"F"		A18039	
INSUL	.120	"O"	.542		
WIRE RANGE	INSULATION RANGE	PRESS NO			
22-18	.080-1.00				
REMARKS AMP-O-LECTRIC PRE FEED					
I.D. PLATE (REF): 461264-1					

0150-1093-01	CE 11.01	458638-1	127	SETUPPAGE 10-1
EC-A-238790	DR 1-13-77	APPL 17-77		DR 1-13-77
ECN A-153588	CE 11-1-88	WENTHURY	WENTHURY	WENTHURY
REV PER ECU R2197	11/29/07	2-8-84	CHK 1/77	REL 11/17/77
REV PER ECU R4979	11/29/07	2-8-84	CHK 1/77	REL 11/17/77
REV ITEM 37 PER R2406	11/29/07	2-8-84	CHK 1/77	REL 11/17/77
NAME MINIATURE QUICK CHANGE APPLICATOR END FEED (AMP EDGE)				



DIST 66

AMP 3076-2 REV 8-74