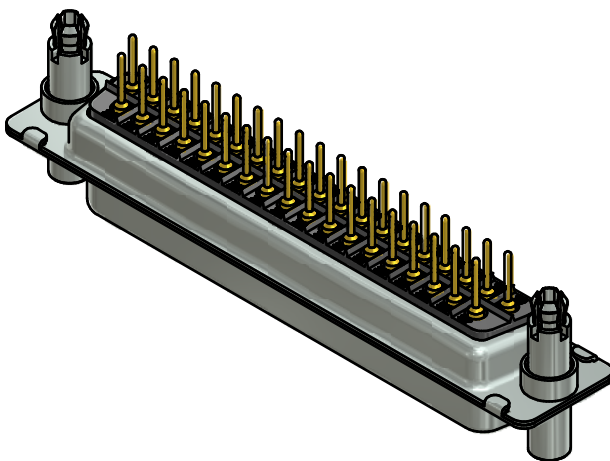
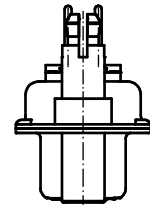
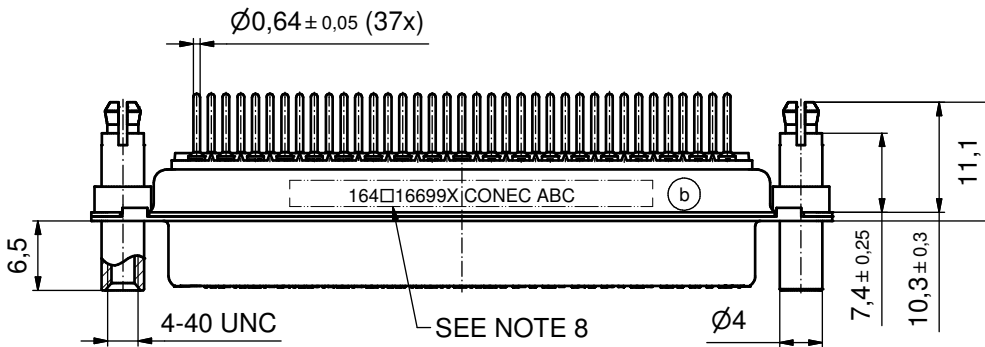
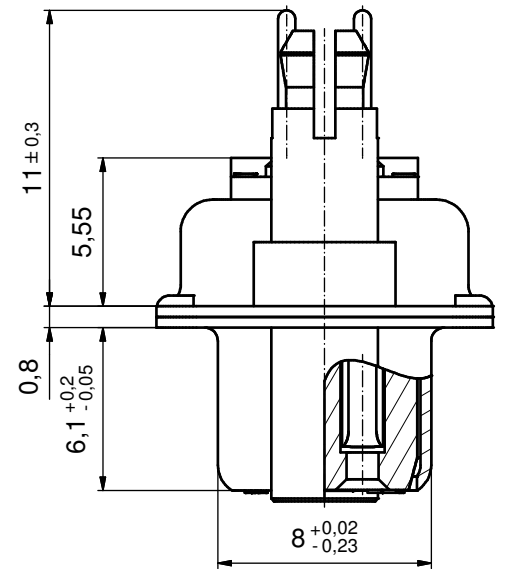
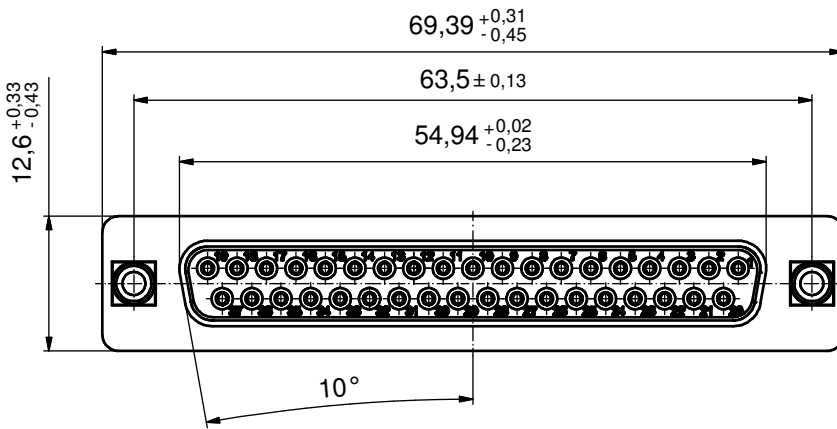


(5:1)



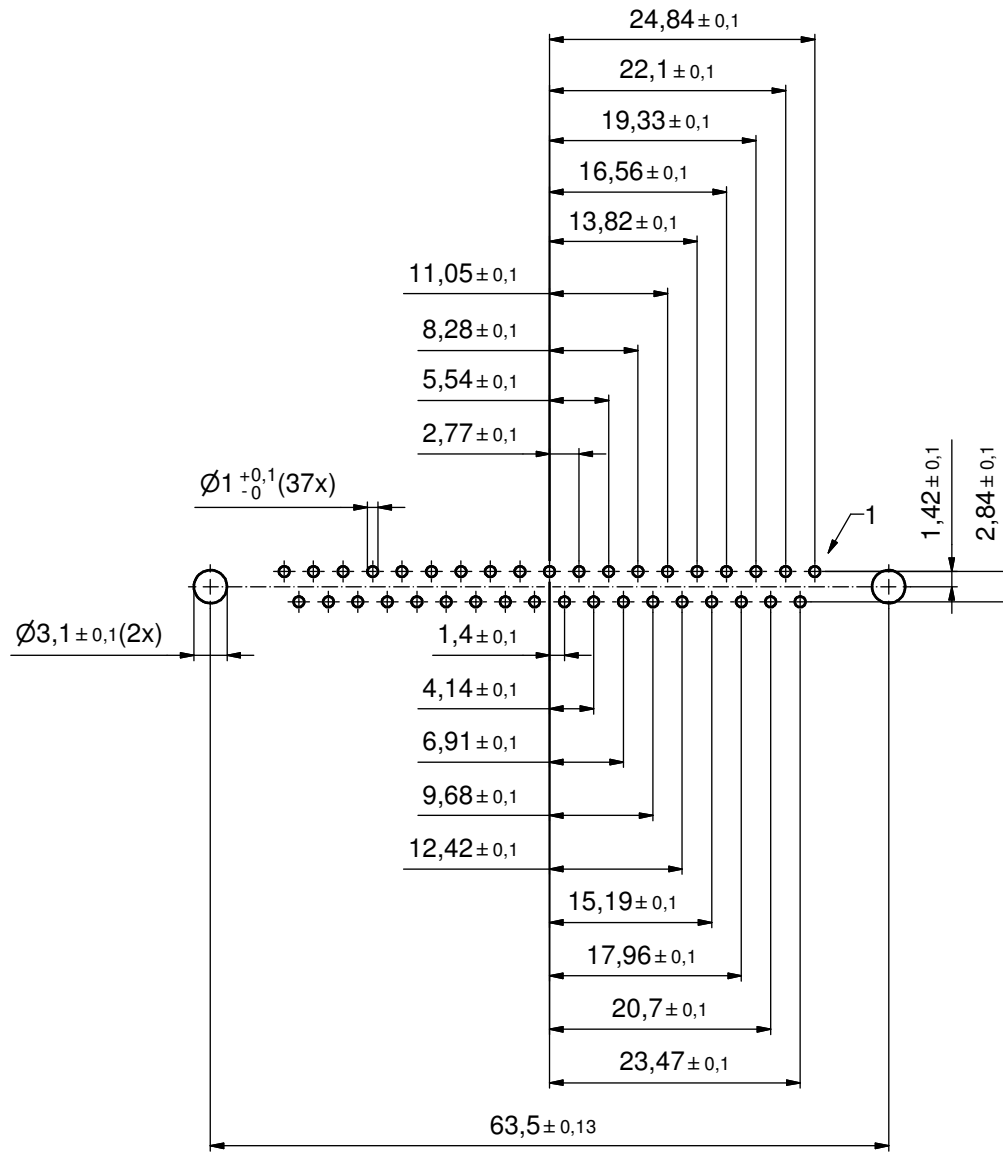
NOTES:

1. METALSHELLS: STEEL; min. 315µm TIN over 40-80µm NICKEL
2. INSULATORS: PBT GF UL 94 V-0; BLACK
3. SIGNAL CONTACTS: COPPER ALLOY; PLATING (SEE PART NO.):
 - PLEASE ADD A for GOLD FLASH over NICKEL (PREFERRED TYPE)
 - PLEASE ADD B for 20µm HARD GOLD over min. 50µm NICKEL
 - PLEASE ADD C for 30µm HARD GOLD over min. 50µm NICKEL
4. THREADED LOCK AND SPACER CLIPS: COPPER ALLOY; min. 200µm TIN over 80µm NICKEL
PCB-HOLES: $\phi 3,1 \pm 0,1$; PCB THICKNESS 1,6mm
5. COLLARS: COPPER ALLOY; min. 200µm TIN over 80µm NICKEL
6. P.C.B. HOLE DRILLINGS ON SHEET 2
7. MAXIMUM TORQUE VALUE FOR THREAD: 6 in.LB
8. CONNECTOR IS PART MARKED: 164□16699X CONEC ABC (see note 3)

Directive 2002/95/EC RoHS compliant

THIS DRAWING MAY NOT BE COPIED OR REPRODUCED IN ANY WAY, AND MAY NOT BE PASSED ON TO A THIRD PARTY WITHOUT WRITTEN PERMISSION. OWNERSHIP AND COPYRIGHT OF CONEC GmbH DO NOT ALTER CAD DRAWING BY HAND				tolerance		scale: 2:1 (5:1)
				date	name	material: see notes
				drawn	04.07.13 Henneboel	title: D-SUB FEMALE 37pos. SOLDER PIN STRAIGHT with threaded lock and spacer clip
				appd.	08.07.13 Fischer	
				norm		
			d-old	16K1IKWA/16K2IKWA	dwg no:	
3 x b	A4824	04.07.2013	K.H.		(b) 16K1A3272	DIN-A3 sh: 1/2
rev.	description	date	name	part no: 164□16699X (see note 3)		

P.C.B. HOLE DRILLINGS
(P.C.B. TOP SIDE)



THIS DRAWING MAY NOT BE COPIED OR REPRODUCED IN ANY WAY, AND MAY NOT BE PASSED ON TO A THIRD PARTY WITHOUT WRITTEN PERMISSION. OWNERSHIP AND COPYRIGHT OF CONEC GmbH DO NOT ALTER CAD DRAWING BY HAND				tolerance		scale: 2:1
				date	name	material: see sheet 1
				drawn	04.07.13	Henneboel
				appd.	04.07.13	Fischer
				norm		
			d-old	(b) 16K11IUA		
1 x b	Ä4824	04.07.2013	K.H.	title: P.C.B. HOLE DRILLINGS D-SUB FEMALE 37pos. solder pin straight with threaded lock and spacer clip		
a	Original					
rev.	description	date	name			dwg no: 16K1A3272 DIN-A3 sh: 2/2
				part no: see sheet 1		