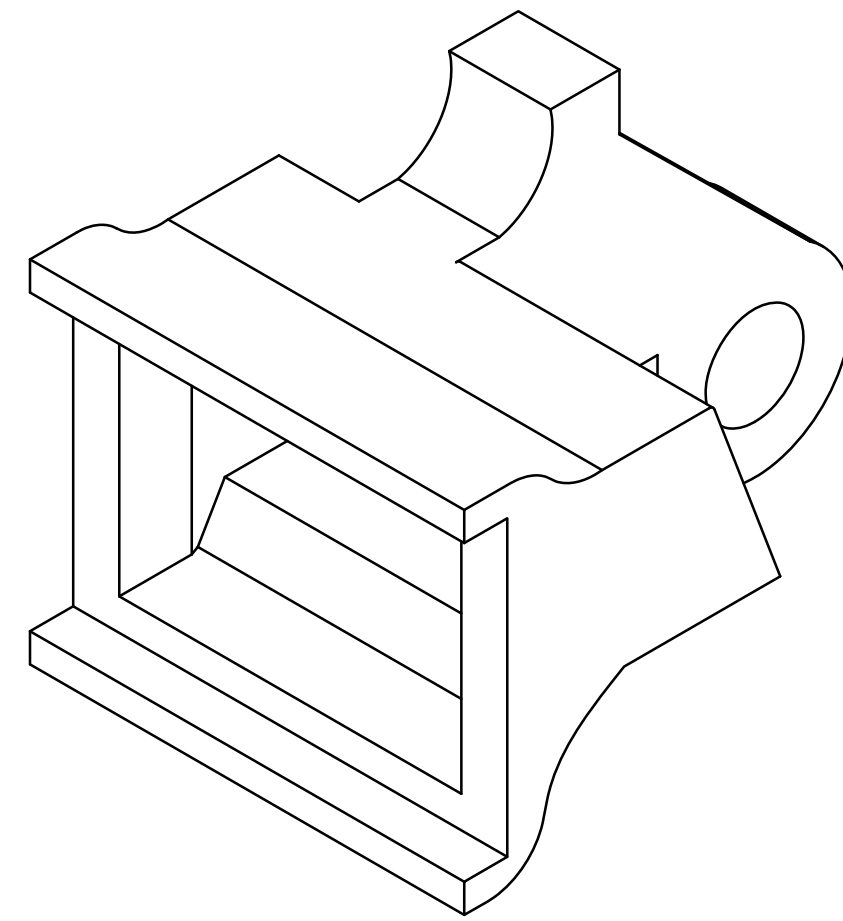
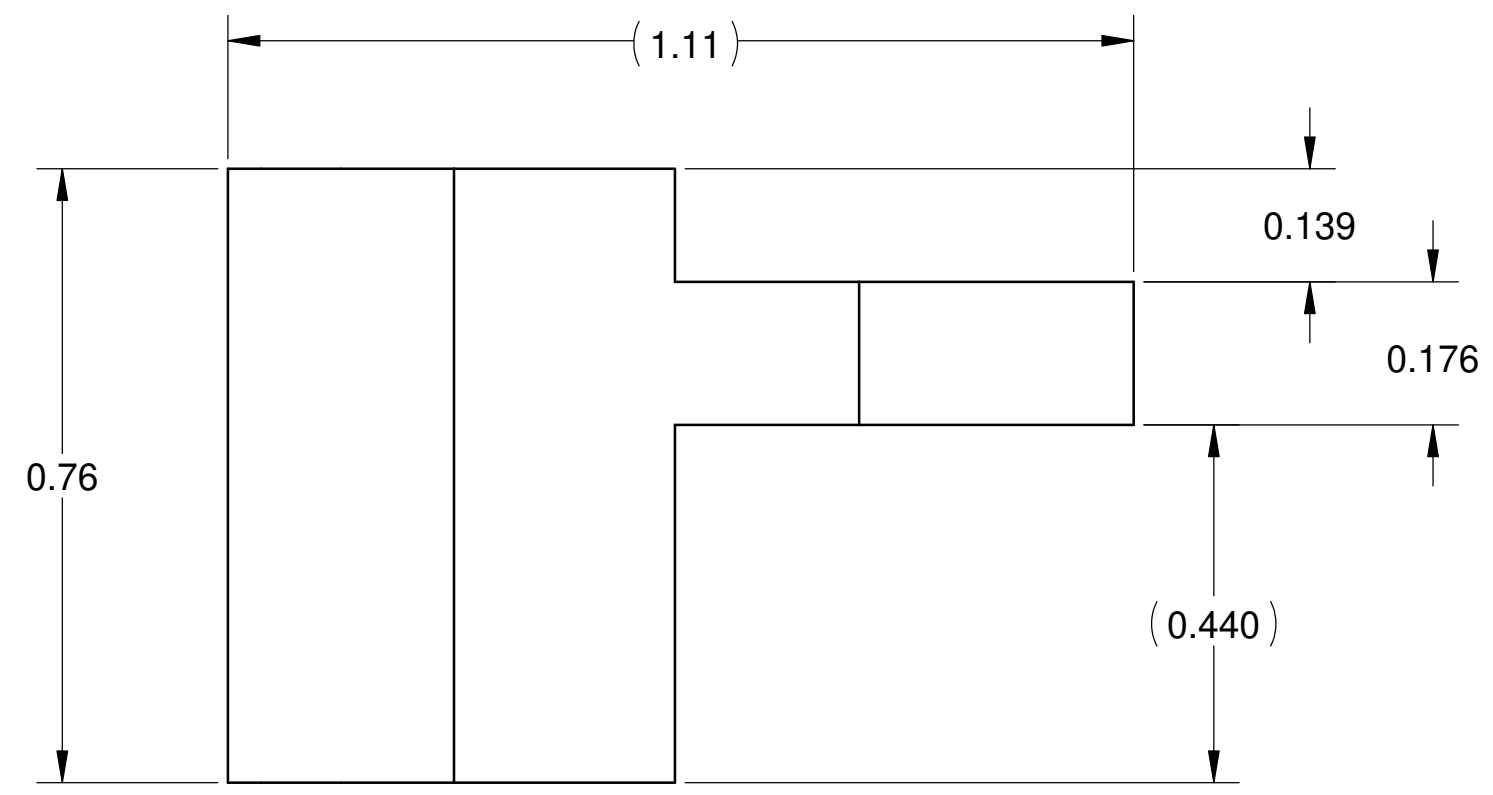
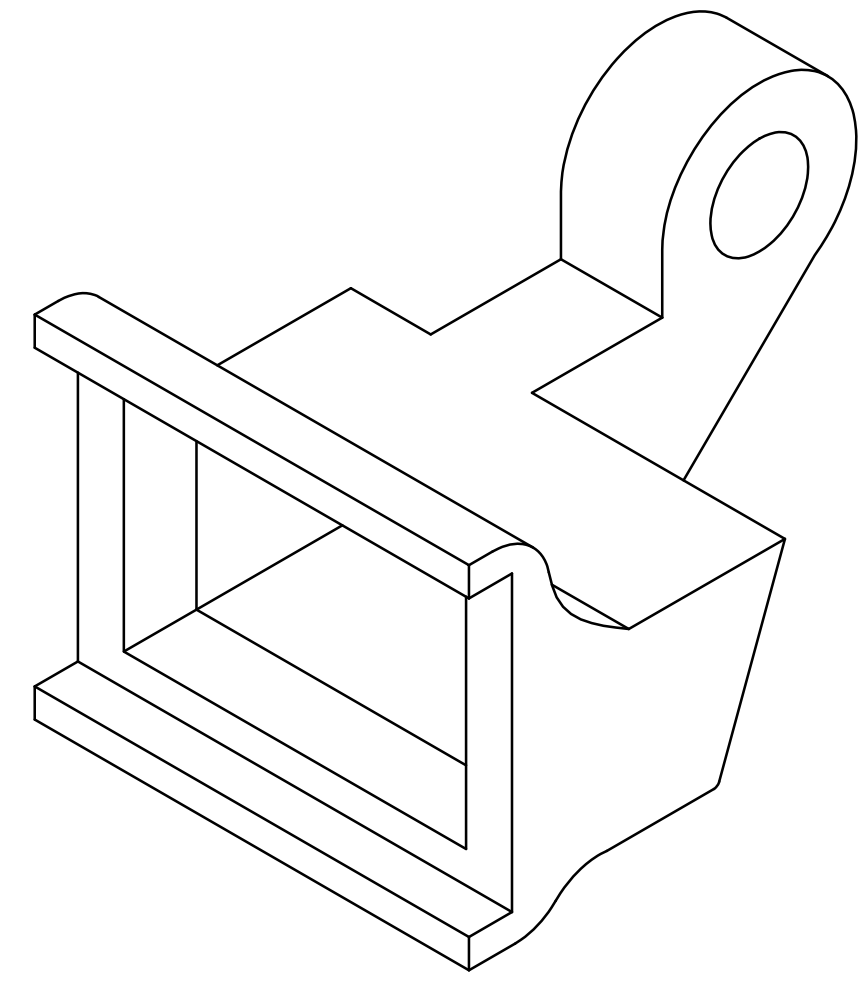
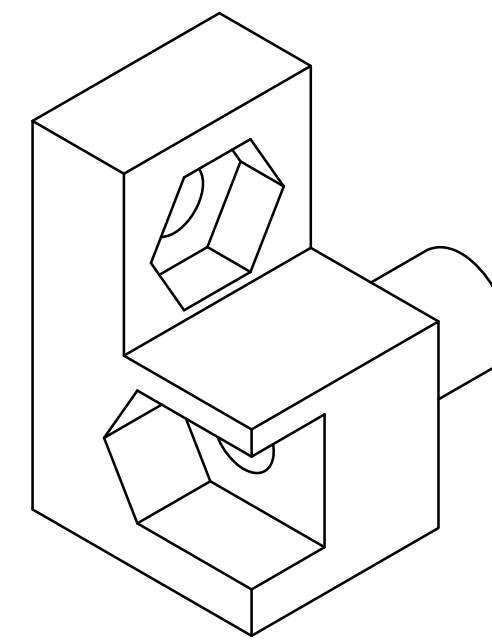


PROPRIETARY AND CONFIDENTIAL
 THE INFORMATION CONTAINED IN THIS DRAWING IS THE SOLE PROPERTY OF
 VECTOR ELECTRONICS & TECHNOLOGY, INC. ANY REPRODUCTION IN PART
 OR AS A WHOLE WITHOUT THE WRITTEN PERMISSION OF VECTOR ELECTRONICS
 & TECHNOLOGY, INC IS PROHIBITED.

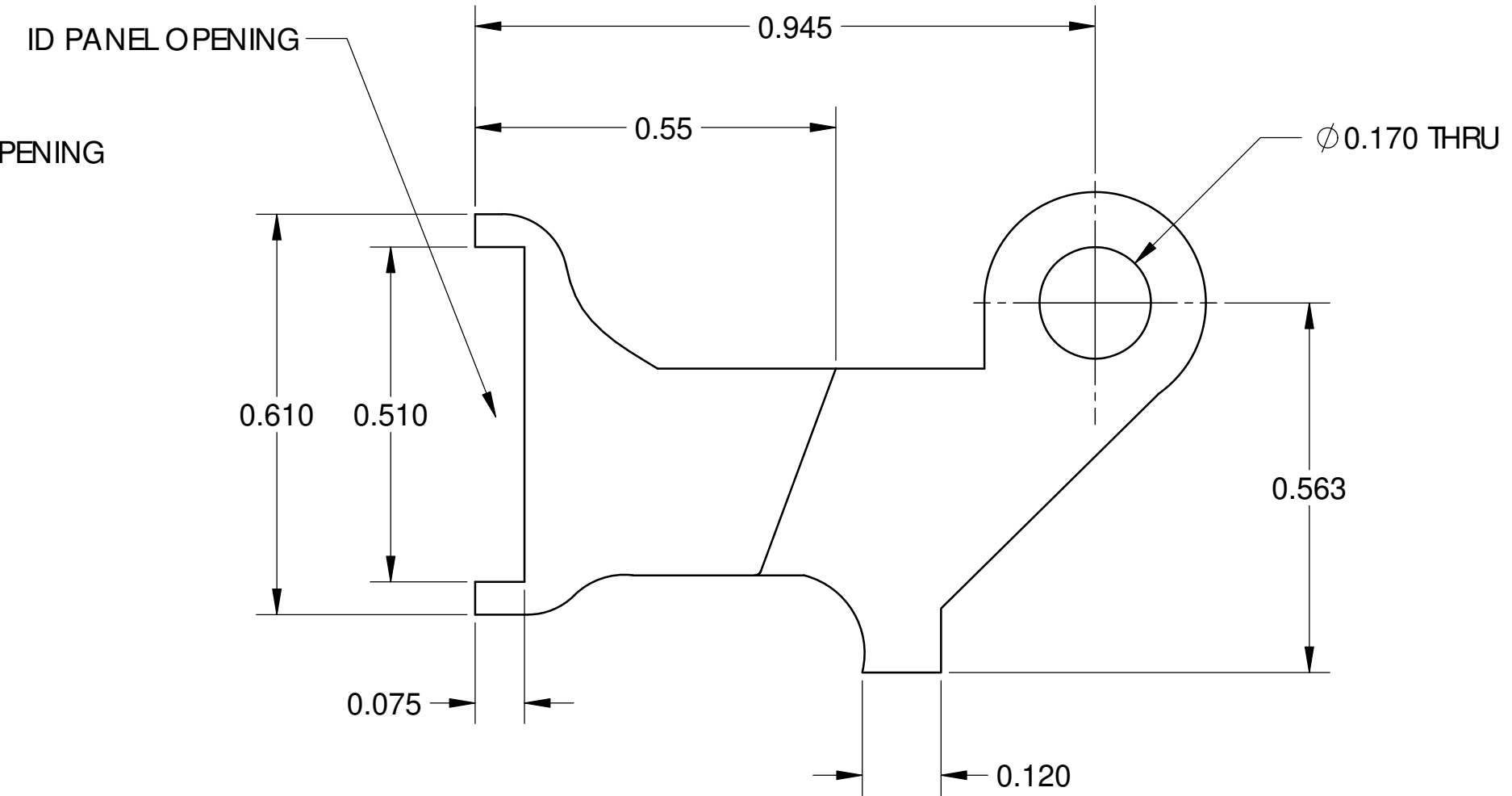
REVISIONS				
ZONE	REV	DESCRIPTION	DATE	APPROVED
ALL	A	INITIAL RELEASE	08/31/12	



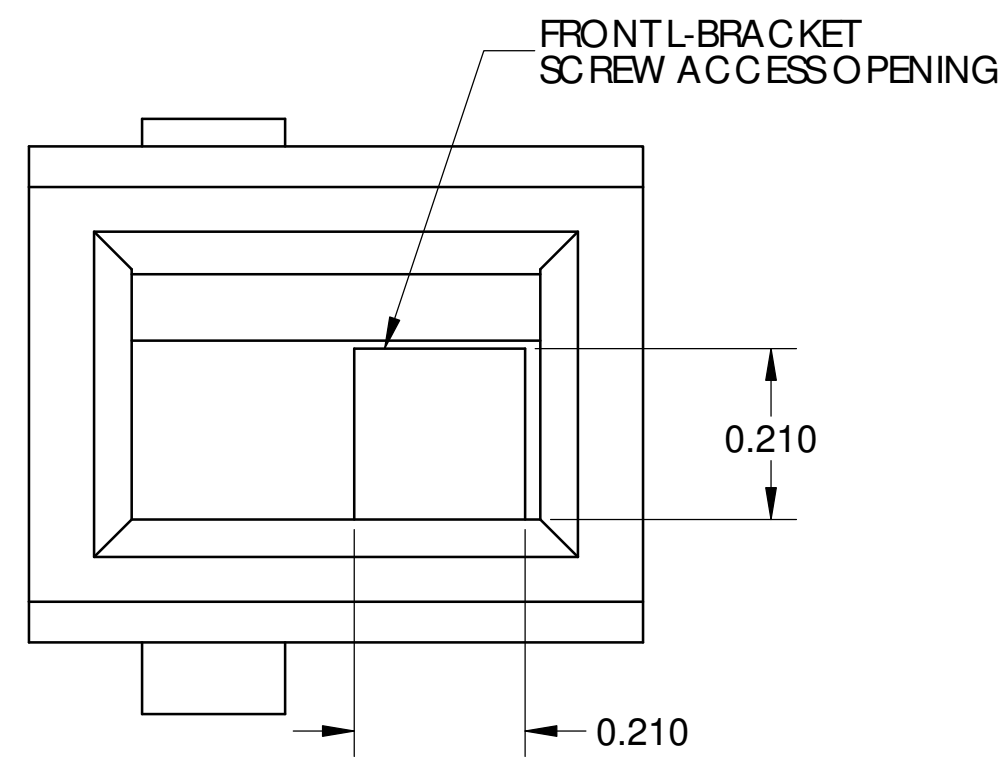
TOP EJECTOR HANDLE DETAIL
 MIRROR VIEW OF BOTTOM HANDLE



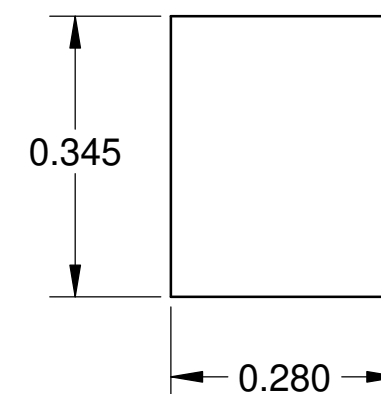
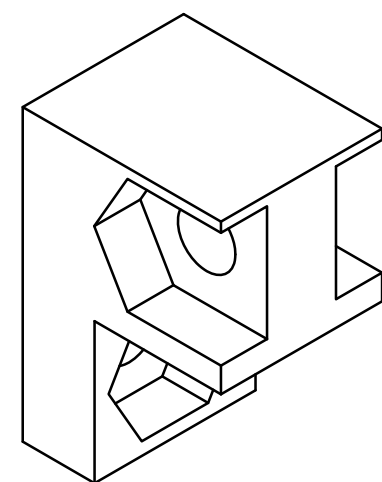
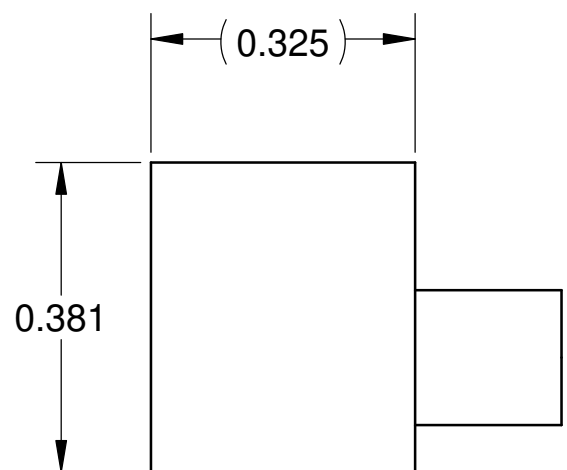
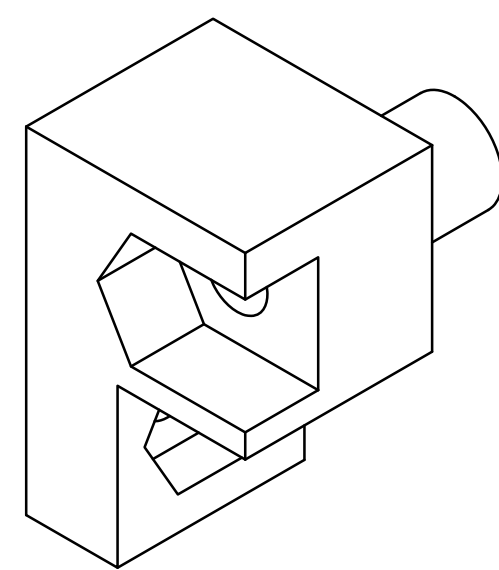
TOP SUPPORT BRACKET DETAIL
 MIRROR VIEW OF BOTTOM BRACKET



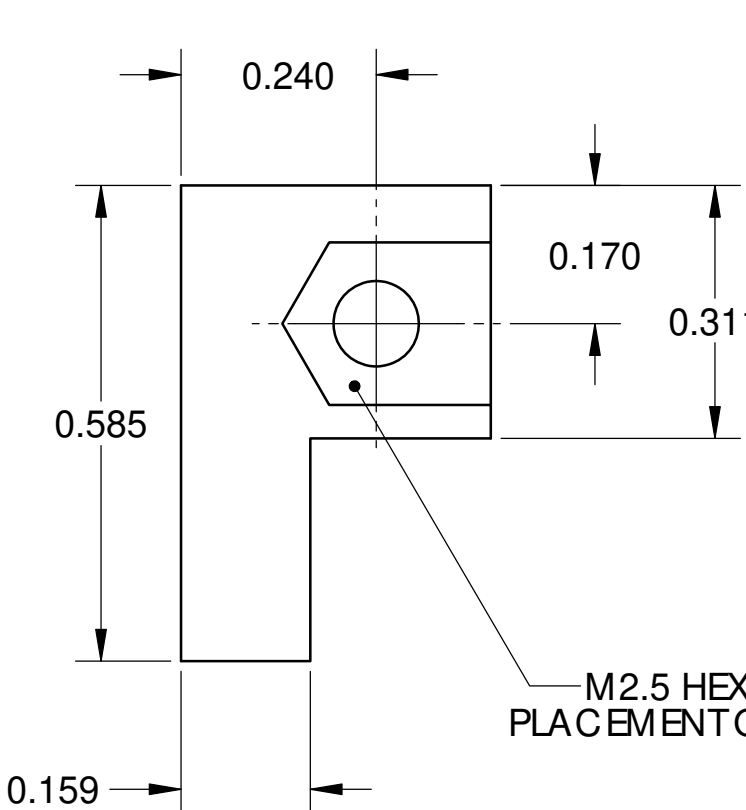
BOTTOM EJECTOR HANDLE DETAIL



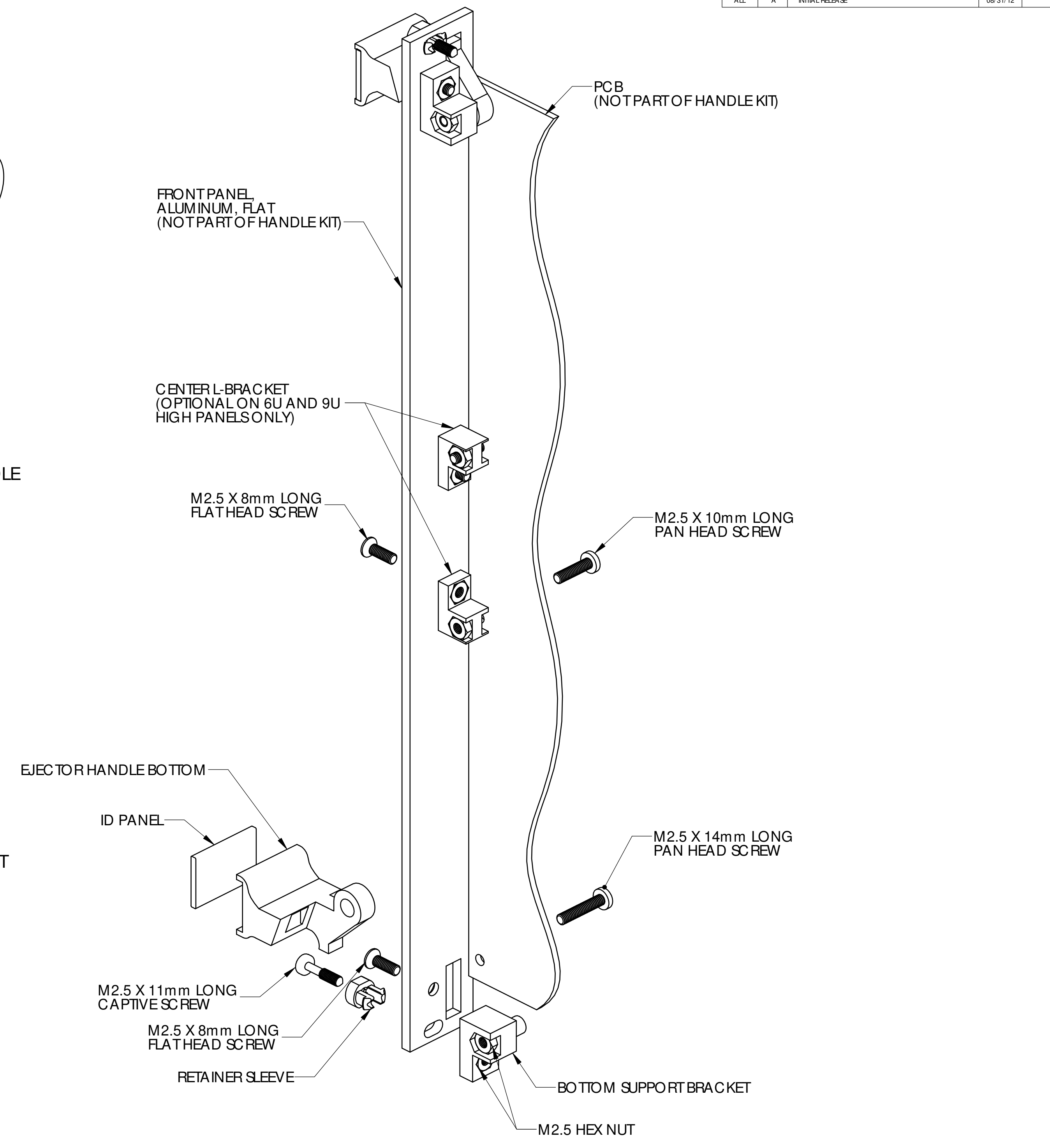
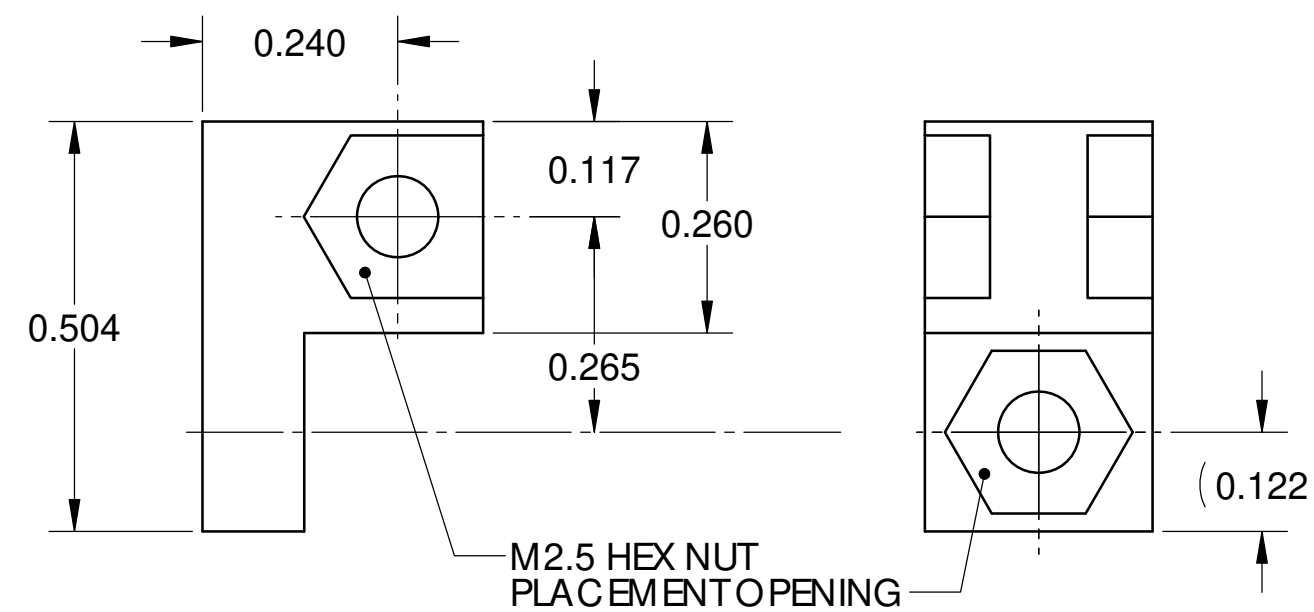
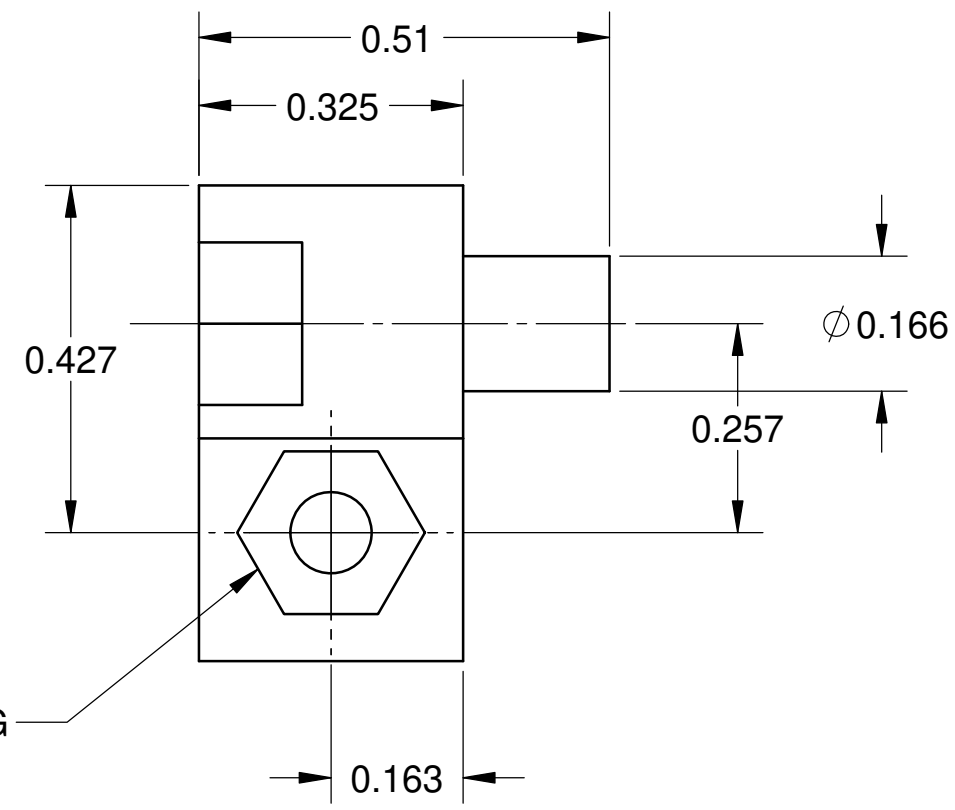
FRONT L-BRACKET
 SCREW ACCESS OPENING



CENTER L-BRACKET DETAIL

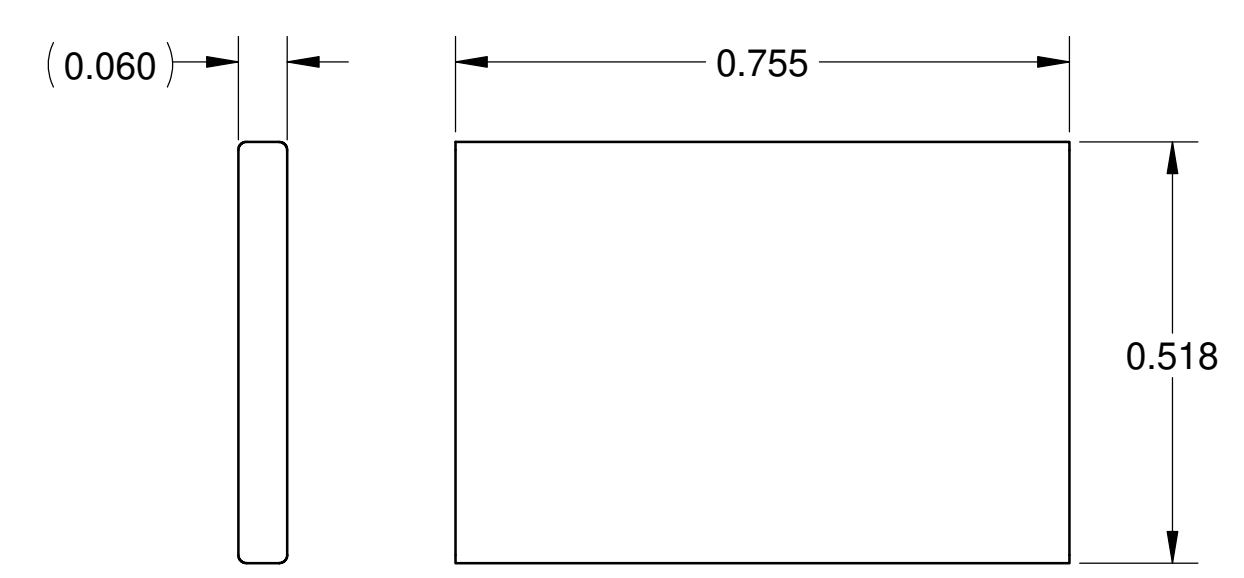


BOTTOM SUPPORT BRACKET DETAIL



CM10 PARTS LIST

ITEM NO	DESCRIPTION	QTY	U/M
1	EJECTOR HANDLE, BOTTOM	1	EACH
2	EJECTOR HANDLE, TOP	1	EACH
3	SUPPORT BRACKET, BOTTOM	1	EACH
4	SUPPORT BRACKET, TOP	1	EACH
5	ID PANEL	2	EACH
6	CENTER L-BRACKET	2	EACH
7	RETAINER SLEEVE	2	EACH
8	CAPTIVE SCREW, M2.5-0.45X11mm	2	EACH
9	SCREW, FLAT HEAD, M2.5-0.45X8mm	4	EACH
10	SCREW, PAN HEAD, M2.5-0.45X14mm	2	EACH
11	SCREW, PAN HEAD, M2.5-0.45X10mm	2	EACH
12	HEX NUT, M2.5X0.45-6H	8	EACH



ID PANEL DETAIL

UNLESS OTHERWISE SPECIFIED:
 DIMENSIONS ARE IN INCHES
 TOLERANCES

DEC .XX	±0.1
DEC .XXX	±0.03
DEC .XXX	±0.010
FRACTIONS	±0.050
ANGLES	±1°

THIRD ANGLE PROJECTION

NAME	DATE
TRJSHAR	08/31/12

VECTOR ELECTRONICS & TECHNOLOGY, INC. 11115 VANOWEN ST
 NORTH HOLLYWOOD, CA 91655 www.vectorselect.com

EJECTOR HANDLE TYPE II, 1101.1

SIZE	DWG. NO.	REV
D	CM10	A

SCALE 4:1 CAGE CODE: 82893 SHEET 1 OF 1