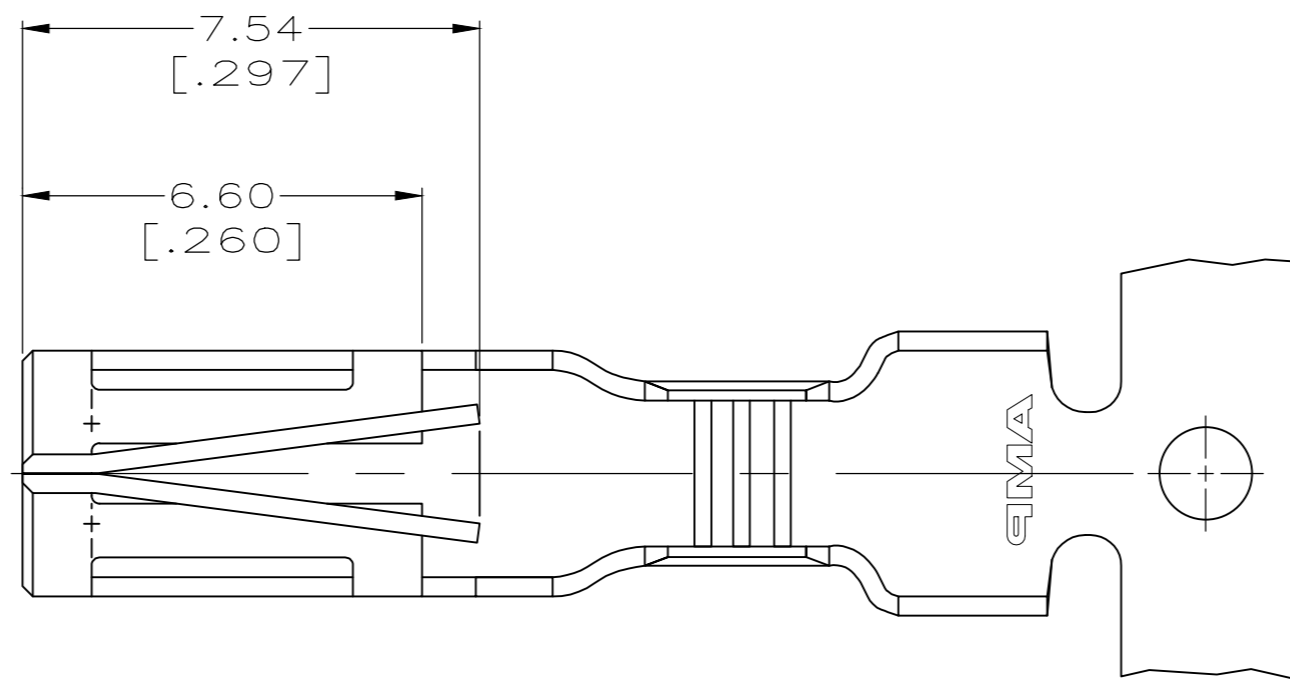
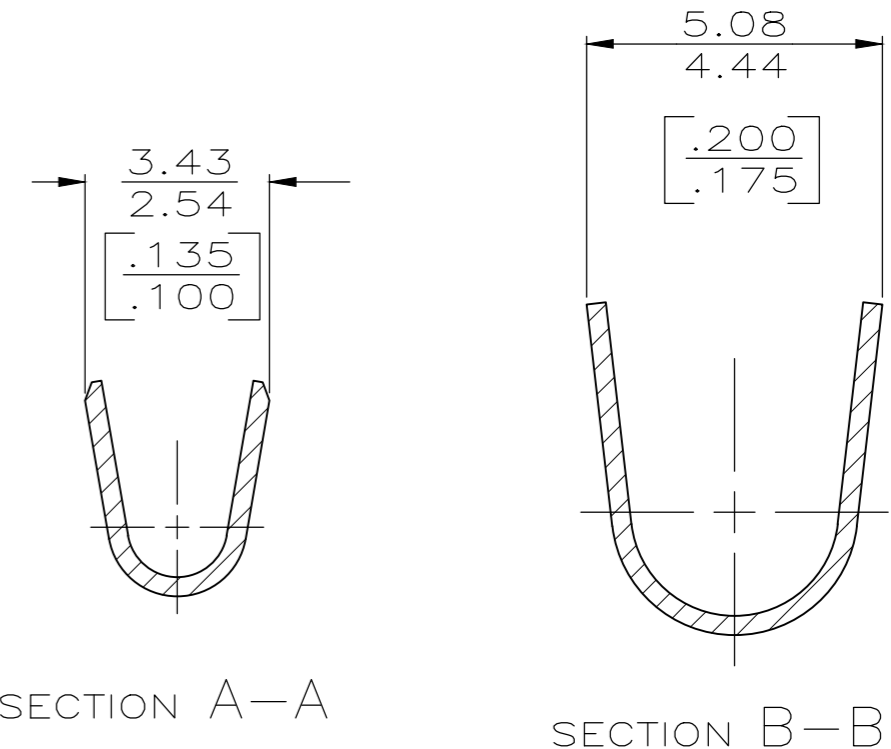
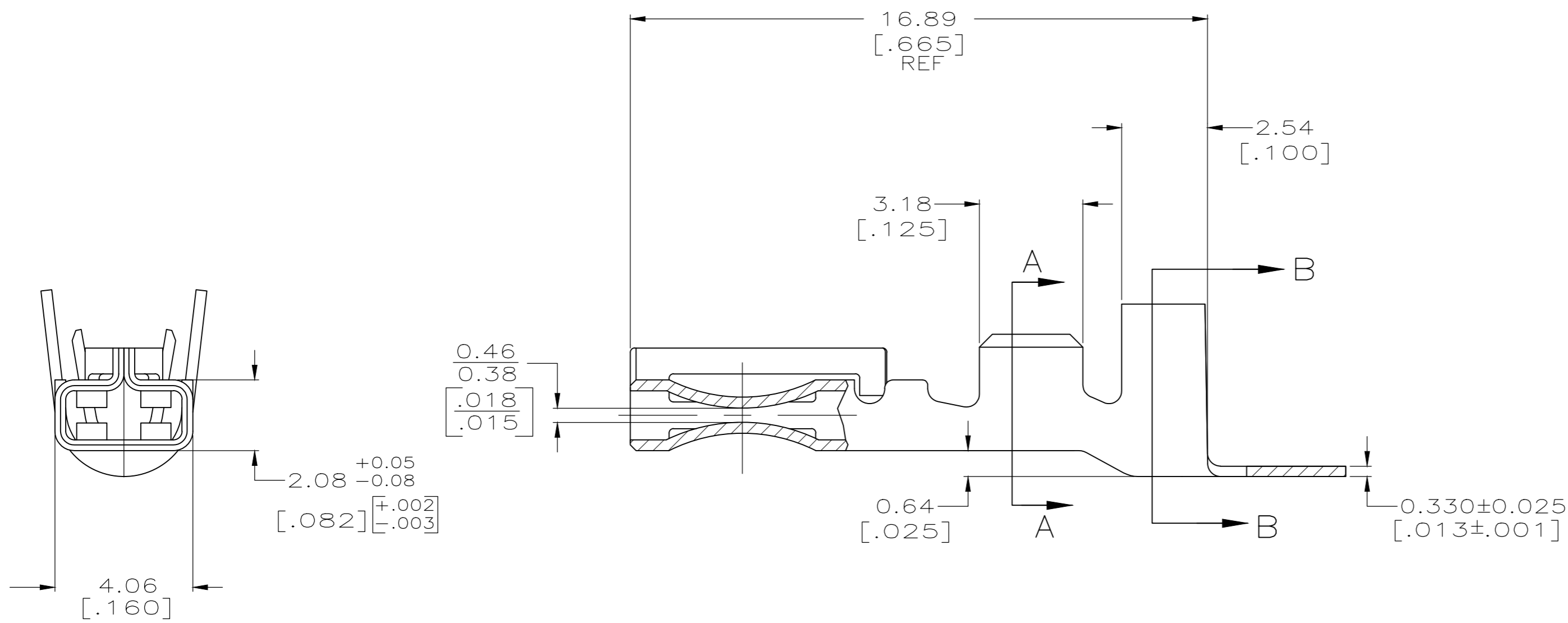


THIS DRAWING IS UNPUBLISHED. RELEASED FOR PUBLICATION  
 © COPYRIGHT - By - ALL RIGHTS RESERVED.

REVISIONS					
P	LTR	DESCRIPTION	DATE	DWN	APVD
E6		REVISED PER ECR 18-011199	16JUL18	MD	TD



- 1 CONTINUOUS STRIP ON REEL.
- 2 WIRE SIZE: 0.8-2.0mm<sup>2</sup>[#18-#14AWG] SINGLE WIRE. ALSO CONNECTS 2 WIRES (2X#20 AWG, 2x#18 AWG OR 1x#16 PLUS 1X#18 AWG).
- 3 INSULATION RANGE: 2.16-3.30 [.085-.130] FOR SINGLE WIRE. CONSULT APPLICATION SPECIFICATION FOR 2 WIRE COMBINATIONS.
- 4 PRELIMINARY - NOT FOR PRODUCTION.
- 5 LUBRICATION NEEDS TO BE APPLIED DURING TERMINATION.
- 6 TERMINAL IS SUPPLIED LUBRICATED TO AID TERMINATION.



OBSOLETE	FINISH	MATERIAL	PART NUMBER
<del>6</del>	POST PLATED TIN	H06 BRASS	<del>1217039-4</del>
5	PRE-PLATED TIN	H06 COPPER ALLOY	1217039-3
5	POST PLATED NICKEL	H08 COPPER ALLOY	1217039-2
5	POST PLATED TIN	H06 BRASS	1217039-1

THIS DRAWING IS A CONTROLLED DOCUMENT.		DWN PHILLIP M. FORTNEY 05/DEC/97	<b>STE</b> TE Connectivity Ltd.	
DIMENSIONS: mm [INCHES]		CHK JEFF R. RUTH 05/DEC/97		
TOLERANCES UNLESS OTHERWISE SPECIFIED:		APVD DON DECKER 05/DEC/97	NAME	
0 PLC ± -		PRODUCT SPEC	108-1271-1	
1 PLC ± -		APPLICATION SPEC	114-49003	
2 PLC ± 0.25 [.010]		MATERIAL	WEIGHT	0,000000
3 PLC ± -		FINISH	SCALE	8:1
4 PLC ± -		SEE TABLE	SHEET	1 of 1
ANGLES ± -		SEE TABLE	REV	E6
MATERIAL		SEE TABLE	CUSTOMER DRAWING	RESTRICTED TO