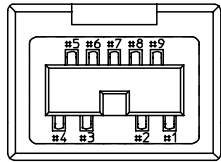
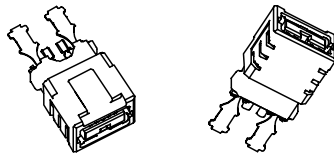
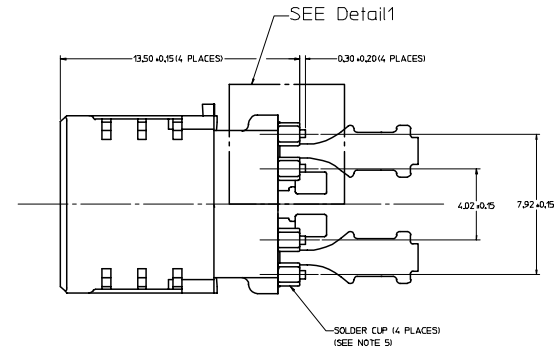
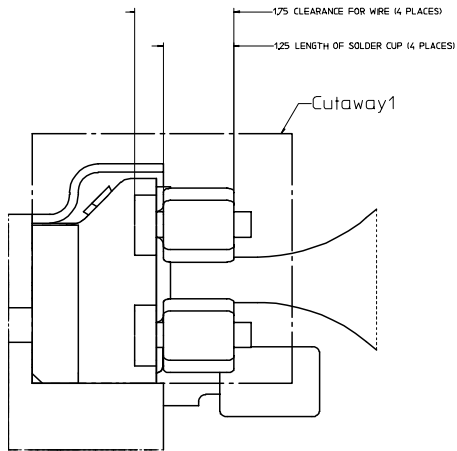
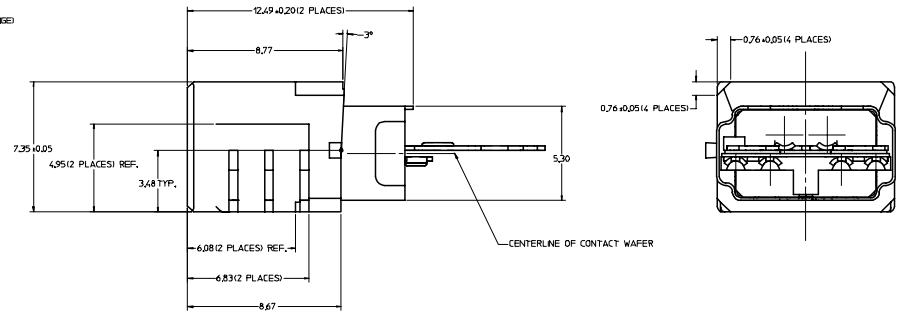
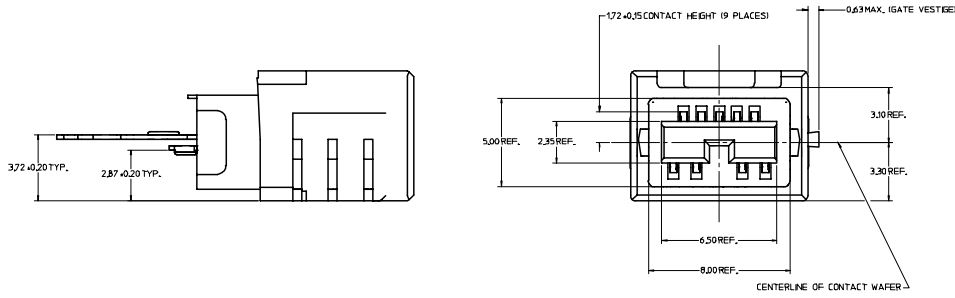
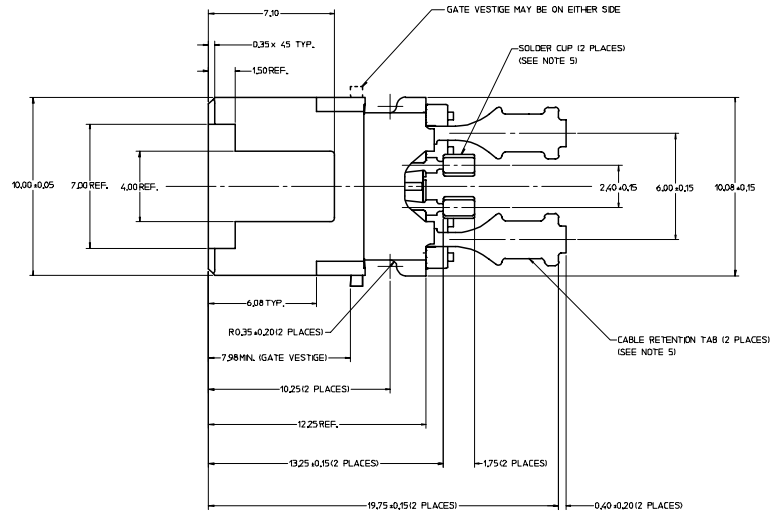


NOTES:

1. MATERIAL:
 - PLASTIC MOLDINGS: GLASS FILLED LCP, COLOR BLACK.
 - PLUG SHELL: STAINLESS STEEL.
 - CONTACTS: COPPER ALLOY.
2. FINISH:
 - *PLUG SHELL: 3.05 MICRONS MINIMUM TIN OVER 127 MICRONS MINIMUM NICKEL.
 - *CONTACTS: 0.25 MICRONS MINIMUM SELECT GOLD, AND 3.05 MICRONS MINIMUM SELECT TIN OVER 127 MICRONS MINIMUM NICKEL OVERALL.
- * THE PRIMARY SHIPPING CARTON WILL BE LABELED "COMPLIANT TO ROHS DIRECTIVE 2002/95/EEC AND ELY ANNEX II OF DIRECTIVE 2000/53/EEC. CARTONS WITHOUT THIS LABEL MAY CONTAIN PRODUCT WITH TIN-LEAD IN THE PC TAIL AREA.
3. PRODUCT SPECIFICATION: PS-45240-001.
4. DIMENSIONS AND FEATURES PLACED ACROSS CENTERLINES TO BE SYMMETRIC ABOUT THOSE CENTERLINES WITHIN 0.5mm TOTAL.
5. THE SOLDER CUPS AND CABLE RETENTION TABS ARE TIN PLATED TO FACILITATE SOLDERING.



NUMBERING



ISOMETRIC PROJECTIONS OF 449721001 FROM TWO PERSPECTIVES (SCALE 4:1)

Detail1
SCALE 32:1

REVISED EC NO: UCP2005-2000 DRAWN: COMERC 2005/03/18 CHK: COMERC 2005/03/23 APPR: COMERC 2005/03/23 REV DESCRIPTION	QUALITY SYMBOLS	GENERAL TOLERANCES (UNLESS SPECIFIED)	SCALE 10:1	DESIGN UNITS METRIC	THIRD ANGLE PROJECTION	REVISE ON CAD ONLY	
	4 PLACES ± --- ± --- 3 PLACES ± --- ± --- 2 PLACES ± 0.10 ± --- 1 PLACE ± --- ± ---	mm INCH ANGULAR ± 1 °	DIMENSION STYLE MM ONLY	DRAWN BY	DATE	TITLE	
	DRAFT WHERE APPLICABLE MUST REMAIN WITHIN DIMENSIONS		CHECKED BY PELOZA 01/10/03	DATE	DATE	FINAL PLUG ASSEMBLY BILINGUAL PLUG 1394B	
			APPROVED BY COMERC 01/10/03	DATE	DATE	MOLEX INCORPORATED MATERIAL NO. 449721001 DOCUMENT NO. SD-44972-001	SHEET NO. 1 OF 1

THIS DRAWING CONTAINS INFORMATION THAT IS PROPRIETARY TO MOLEX INCORPORATED AND SHOULD NOT BE USED WITHOUT WRITTEN PERMISSION