

# LED VST19-3020ad

Lamp Class: ST19 Amber Glass



Amber Glass



## Product Description

**LED VST19-3020ad** delivers superior brightness, valuable energy savings and long lasting performance. LED Filaments along with heat-sink absence unmistakably mimic traditional bulb styles while providing greater light distribution. This ST19 Class LED bulb comes in 2200K CCT (*Warm White*) for charming and hospitable environments.



**Estimated Energy Cost: \$0.54 per year**

\*Note: Design, features and specifications subject to change without notice. Some features may not be available on all models. Please visit [www.eurilighting.com](http://www.eurilighting.com) or call 1-888-743-5766 for more information.

## Specifications

| Input Power | Input Voltage | Lumen Output | Beam Angle | Center Beam | CCT    |
|-------------|---------------|--------------|------------|-------------|--------|
| 4.5 W       | 120 V         | 250 lm       | 320°       | N/A         | 2200 K |

| CRI | Luminous Efficacy | Power Factor | Input Current | Base/Cap | Lamp Lifespan |
|-----|-------------------|--------------|---------------|----------|---------------|
| 80  | 55 lm/W           | 0.7          | 0.05 A        | E26      | 15,000 Hrs.   |

## Product Features & Benefits



Dimmable



Energy Efficient

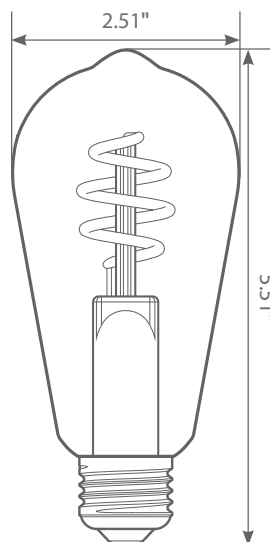


Enclosed Fixture Suitable

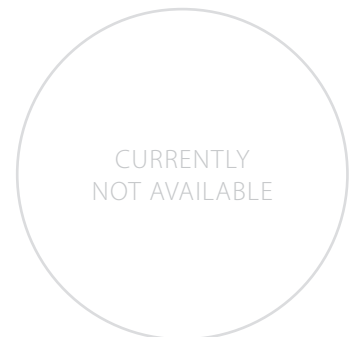


Wet Rated

## Product Dimensions



## Product Photometric Data



**Euri Lighting | A Division of IRTRONIX Inc.**