

### Features

- Small Size
- Low Ripple
- Low Loss

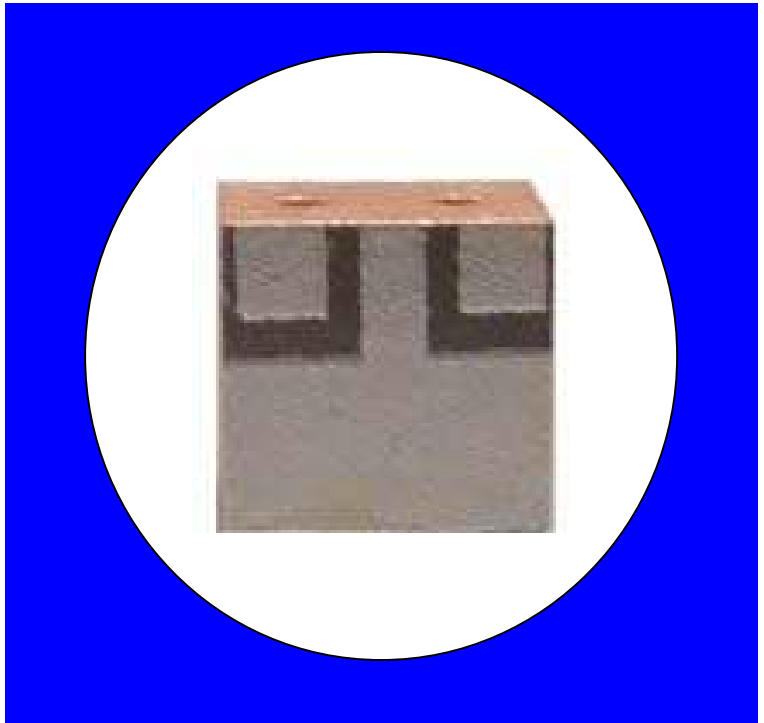
### Description

Surface mount, silver (Ag) coated ceramic filter. Developed for use in Digital Audio Broadcast Applications.

Weight: 0.4 grams typical

Material: Filter is composed of a ceramic block plated with Ag.

Filter complies with RoHS standards.



### Electrical Specifications

Parameter	Frequency (MHz)	Typical @ 25C	Spec @ 25°C	Spec. over -40°C - +85°C
Passband Insertion Loss	1452-1492	0.4	0.8 dB	1.0 dB max
Passband Return Loss @ Input	1452-1492	20	11 dB	10 dB min
Passband Return Loss @ Output	1452-1492	20	11 dB	10 dB min
Passband Variation	1452-1492	0.15	0.2 dB	0.3 dB max
Attenuation:	1242	55.00	41 dB	40 dB min
Power into any port			1 Watt max	

Note: Supplier shall test each filter to the critical electrical specifications of the above table. Any subsequent audits may deviate from in value due to measurement repeatability among different test systems. Such deviations shall not exceed the following limits:

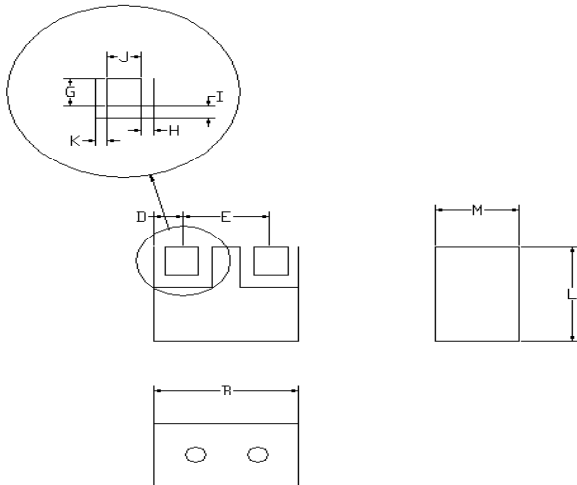
Specification Allowance	
Insertion Loss	0.1 dB
Return Loss	1.0 dB
Stopbands	1.0 dB

\*This product is covered by one or more of the following U.S. and foreign patents including: US 4,692,726;US 4,742,562; US 4,800,348;US 4,829,274;US 5,146,193;EP 0573597;DE 0573597;FR 0573597;JP 508149/92;KR 142171;US 5,162,760;US 5,218,329;US 5,250,916;US 5,327,109;US 5,488,335;CA 2114029;FR 9306297;GB 2273393;JP 3205337;KR 115113;CN 93106228.4;US 5,512,866;EP 0706719;DE 0706719;FR 0706719;GB 0706719;CN 95190359.4;US 5,602,518;US 5,721,520;US 5,745,018;EP 0910875;DE 0910875;DK 0910875;FR 0910875;GB 0910875;IE 0910875;JP 505182/98;KR 10-323013;US 5,994,978;US 6,462,629;CN 00810420.4;US 6,559,735;US 6,650,202;US 6,834,429. Other US and foreign patents pending.

©CTS Corporation 2006 reserves all copyrights in the layout, design and configuration of the patterns on this product.\*

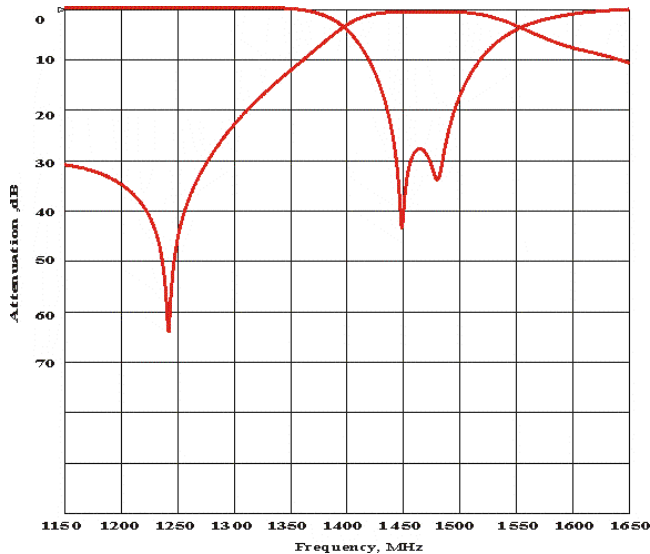
### Mechanical Drawing

Rev 0 – Origin Date: July 11, 2005 – Revision Date: July 11, 2005

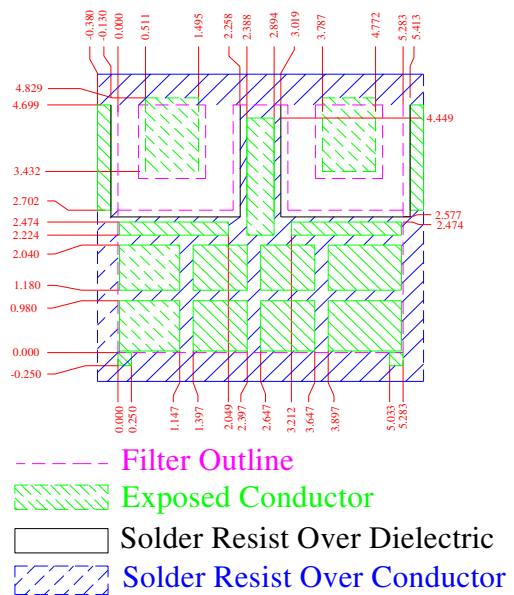


Dim	Nominal (mm)	Tolerance (mm) +/- or max/min
A		
B	5.58	Max
C		
D	1.03	0.25
E	3.28	0.25
F		
G	1.4	0.13
H	0.51	0.13
I	0.6	0.13
J	1.24	0.13
K	0.38	0.25
L	4.99	Max
M	3.2	Max

### Electrical response

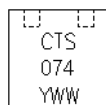
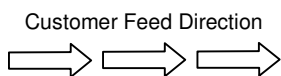
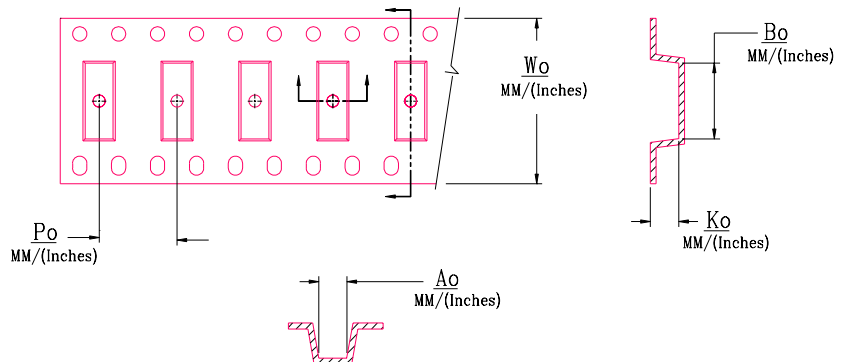


### PCB Layout



### Packaging and Marking

DIMENSION	UNITS	SPECIFICATION
REEL DIAMETER	mm	12
REEL WEIGHT	kg	1.2
REEL QUANTITY	ea.	1000



MODEL NO.	Wo	Ao	Bo	Ko	Po
CER0074	12.0/(0.472)	5.36/(0.211)	5.77/(0.227)	3.73/(0.147)	8.0/(0.315)