

MATERIALS AND FINISHES:

SMA JACK BULKHEAD IP68 CONNECTOR:

BODY, CRIMP TUBE, JAM NUT: BRASS  
PLATED GOLD

CENTER CONTACT: BERYLLIUM COPPER  
PLATED GOLD

INSULATOR: PTFE

LOCK WASHER: PHOSPHOR BRONZE  
PLATED GOLD

GASKET: SILICONE RUBBER

MHF® 4L LK CONNECTOR:

CABLE: 1.37MM CABLE

HEAT SHRINK TUBE: PE

PERFORMANCE REQUIREMENTS

FREQUENCY RANGE: 0~6GHz

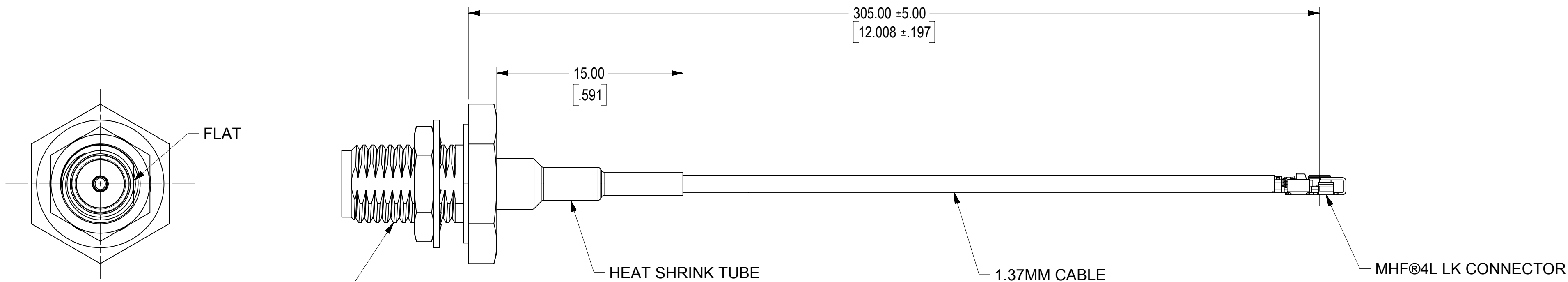
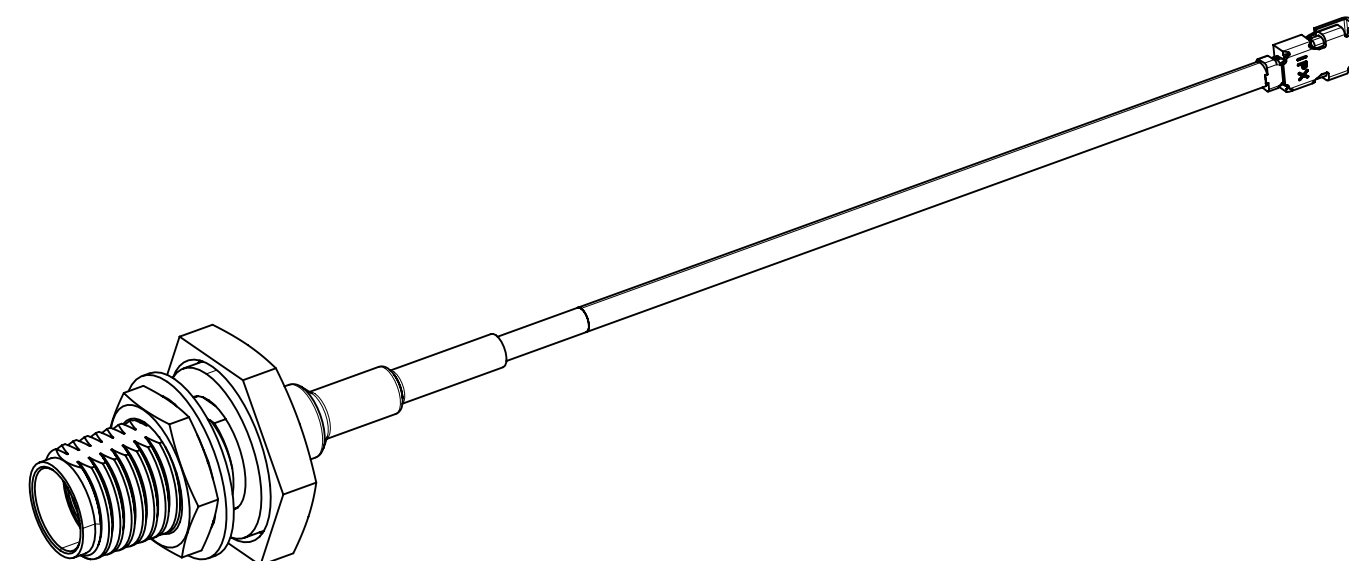
IMPEDANCE: 50 Ω

WITHSTAND VOLTAGE(AC): 350V @0.5mA

CONTINUITY: 100% TEST

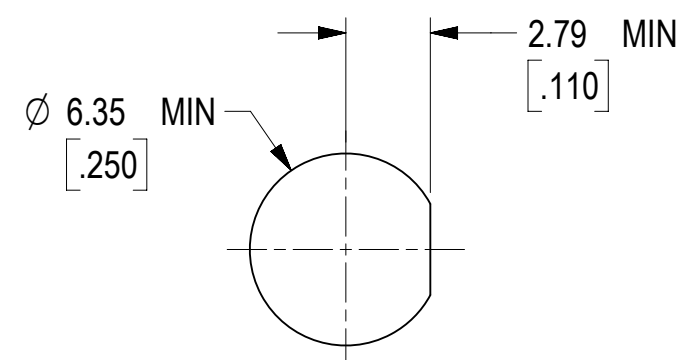
PANEL LEAKAGE: IP68

PACKAGING BY PLASTIC BAG



SMA JACK BULKHEAD IP68 CONNECTOR  
73251-6610

MHF®4L LK CONNECTOR



RECOMMENDED MOUNTING HOLE

PART # 73230-6170

FUNCTIONAL SYMBOLS	THIS DRAWING CONTAINS INFORMATION THAT IS PROPRIETARY TO MOLEX ELECTRONIC TECHNOLOGIES, LLC AND SHOULD NOT BE USED WITHOUT WRITTEN PERMISSION		
	DIMENSION UNITS	SCALE	CURRENT REV DESC:
$\frac{F}{A} = 0$	MM/INCH	4:1	EC NO: 721426 DRWN: YHUANG11 2022/07/21 CHK'D: MYLU07 2022/09/19 APPR: LCHEN03 2022/09/22 INITIAL REVISION: DRWN: YHUANG11 2022/07/21 APPR: LCHEN03 2022/09/22
$\frac{E}{C} = 0$	GENERAL TOLERANCES (UNLESS SPECIFIED)		
$\frac{E}{P} = 0$	ANGULAR TOL ± °		
DIVISIONAL SYMBOLS	4 PLACES ±	3 PLACES ±	
	2 PLACES ±	1 PLACE ±	
	0 PLACES ±		
DRAFT WHERE APPLICABLE MUST REMAIN WITHIN DIMENSIONS		THIRD ANGLE PROJECTION	DRAWING C-SIZE
		SERIES 73230	MATERIAL NUMBER 73230-6170
		CUSTOMER GENERAL MARKET	SHEET NUMBER 1 OF 1

**molex**

CA, SMA JACK BULKHEAD IP68 TO MHF® 4L LK WITH DIA 1.37MM CABLE,50 OHMS,EWR#: 15306-A

PRODUCT CUSTOMER DRAWING

DOCUMENT NUMBER 732306170 DOC TYPE PSD DOC PART 000 REVISION A