

REFERENCE SPECIFICATIONS

-NFC 93425 (in compliance with HE 507)

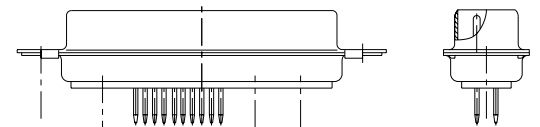
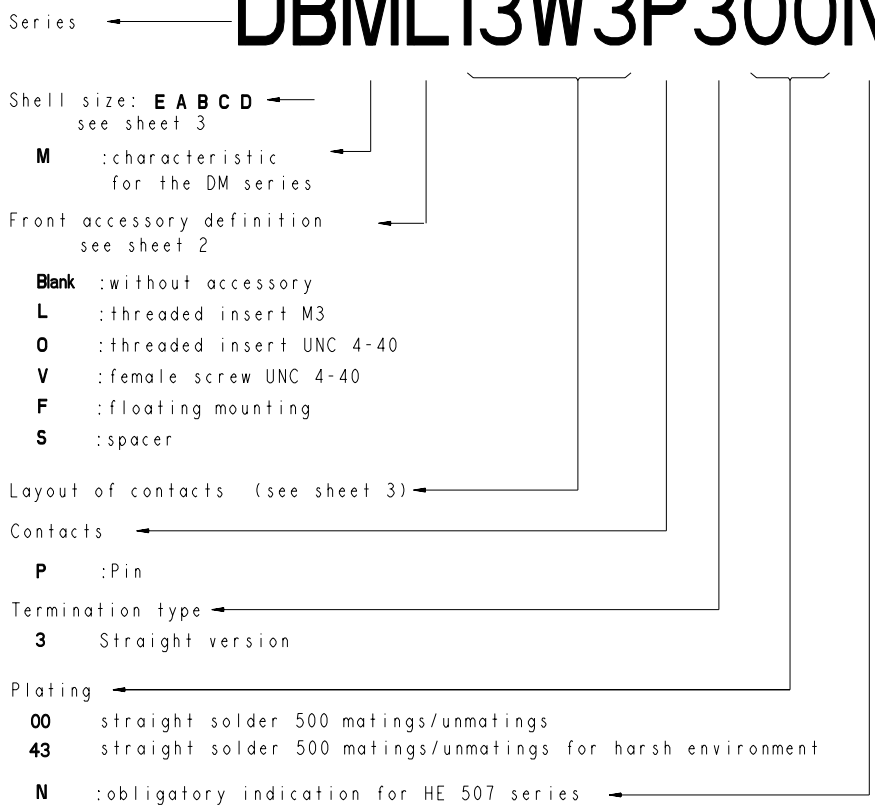
PHYSICAL CHARACTERISTICS

- INSULATOR MATERIAL: THERMOPLASTIC UL94V0
- CONTACT MATERIAL: BRASS
GOLD OVER NICKEL
- ACCESSORIES: STAINLESS STEEL or BRASS
Cadmium plated, yellow passivation
- SHELLS: STEEL
Cadmium plated, yellow passivation

ELECTRICAL CHARACTERISTICS

- NOMINAL CURRENT: 7.5A (SIGNAL CONTACT)
- CONTACT RESISTANCE: <=7.3 m Ohms SIGNAL
- CONTACT/CONTACT : >=1000 V
- CONTACT/GROUND : >=1200 V
- INSULATION RESISTANCE: >=5000 MOhms
- CLIMATIC CATEGORY: 55/125/21
TEMPERATURE RANGE -55°C TO +125°C
DAMP HEAT STEADY STATE 56 DAYS
SALT SPRAY 48 HOURS

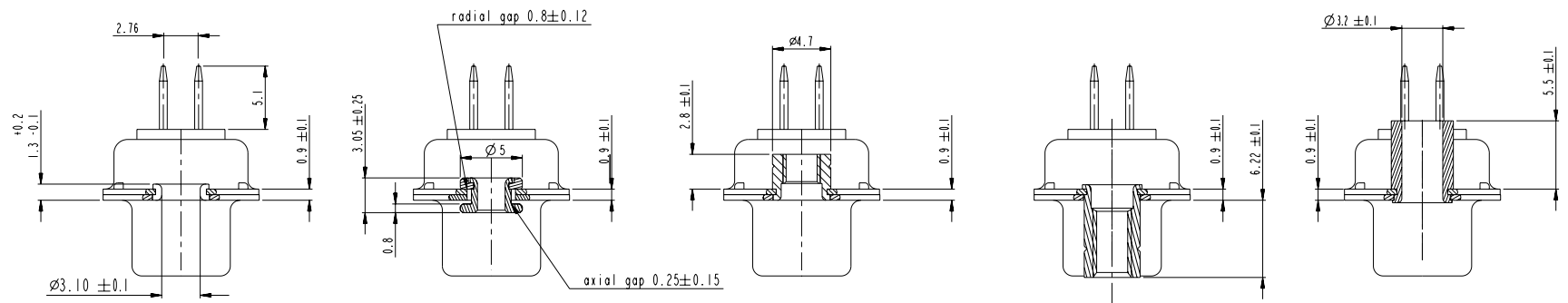
DBML13W3P300N



I3W3 FOR EXAMPLE

Copyright FCI.

www.fciconnect.com				surface	tolerance std	projection	mm	
				ISO 1302	ISO 406 ISO 1101	mm		
				TOLERANCES UNLESS OTHERWISE SPECIFIED				
Dr	M PESSON	2006/11/15	ANGULAR	0.X	±0.3	size	A2	Scale 2:1
Eng	P LEGARE	2006/11/15	LINEAR	0.xx	±0.1	ECN	LS07-0273	
Chr	P LEGARE	2006/11/15	0° ±2°	0.xxx	±0.05	Spec ref		
Appr	P LEGARE	2006/11/15	Product family					
FCI SUB MALE DMW				cat no	C01-8637-1752		Rev.	B
mixed power straight solder				cat no	CUSTOMER		sheet 1 of 7	



FRONT ACCESSORY **Blank** without **F** floating mounting **L** insert M3 **O** insert UNC 4.40 **V** femelle screw UNC 4.40 **S** Spacer

shell size LAYOUTS

PART NUMBER	FRONT ACCESSORY
D*MxWxP300N	without
D*MFxWxP300N	floating mounting
D*MLxWxP300N	insert M3
D*MOxWxP300N	insert UNC 4.40
D*MVxWxP300N	female screw UNC 4.40
D*MSxWxP300N	Spacer
D*MxWxP343N	without
D*MFxWxP343N	floating mounting
D*MLxWxP343N	insert M3
D*MOxWxP343N	insert UNC 4.40
D*MVxWxP343N	female screw UNC 4.40
D*MSxWxP343N	Spacer

- # xWx
- E 5W1
- A 11W1
- A 7W2
- B 21W1
- B 17W2
- B 13W3
- B 9W4
- C 25W3
- C 21WA4
- C 27W2
- D 47W1
- D 24W7
- D 36W4

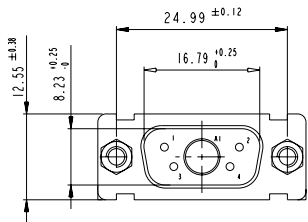
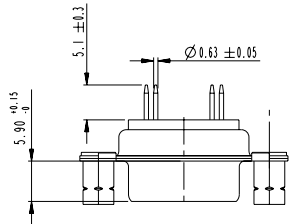
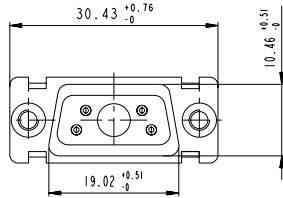
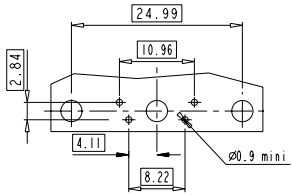
Copyright FCJ

www.fciconnect.com		surface ISO 1302	tolerance std ISO 406 ISO 1101	projection ISO 1101	mm
		TOLERANCES UNLESS OTHERWISE SPECIFIED			
Dr	M PESSON	2006/11/15	ANGULAR	0.X ±0.3	size A2 Scale 2:1
Eng	P LEGARE	2006/11/15	LINEAR	0.XX ±0.1	
Chr	P LEGARE	2006/11/15	0° ±2°	0.XXX ±0.05	ECN LS07-0273
Appr	P LEGARE	2006/11/15	Product family	-	Spec ref
FCJ		SUB MALE DMW		dwg no	Rev.
		mixed power straight solder		C01-8637-1752	B
		catalog no		CUSTOMER	sheet 2 of 7

SCALE: 4

5W1

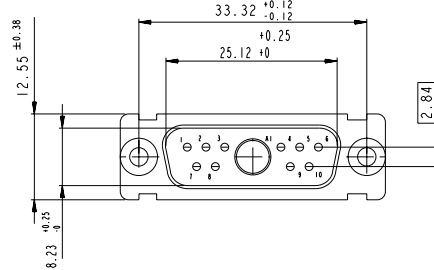
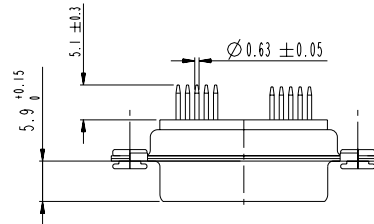
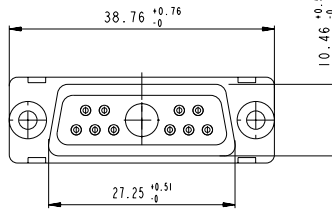
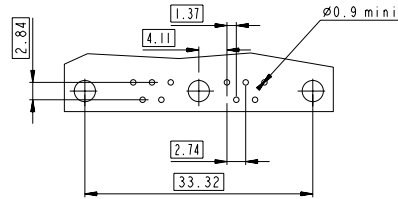
LAYOUT AND CONNECTOR DIMENSIONS



Floating signal contacts

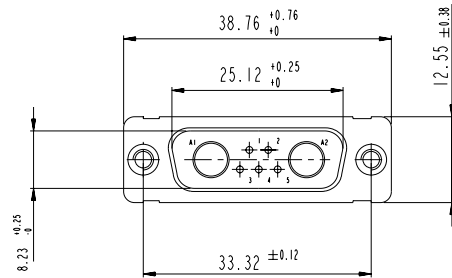
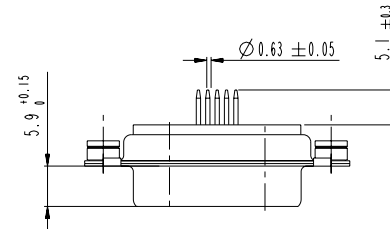
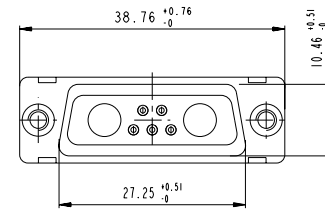
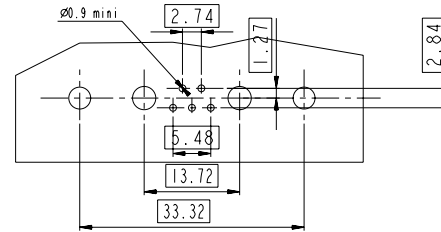
11W1

LAYOUT AND CONNECTOR DIMENSIONS

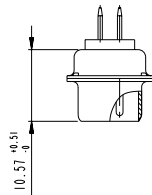


7W2

LAYOUT AND CONNECTOR DIMENSIONS

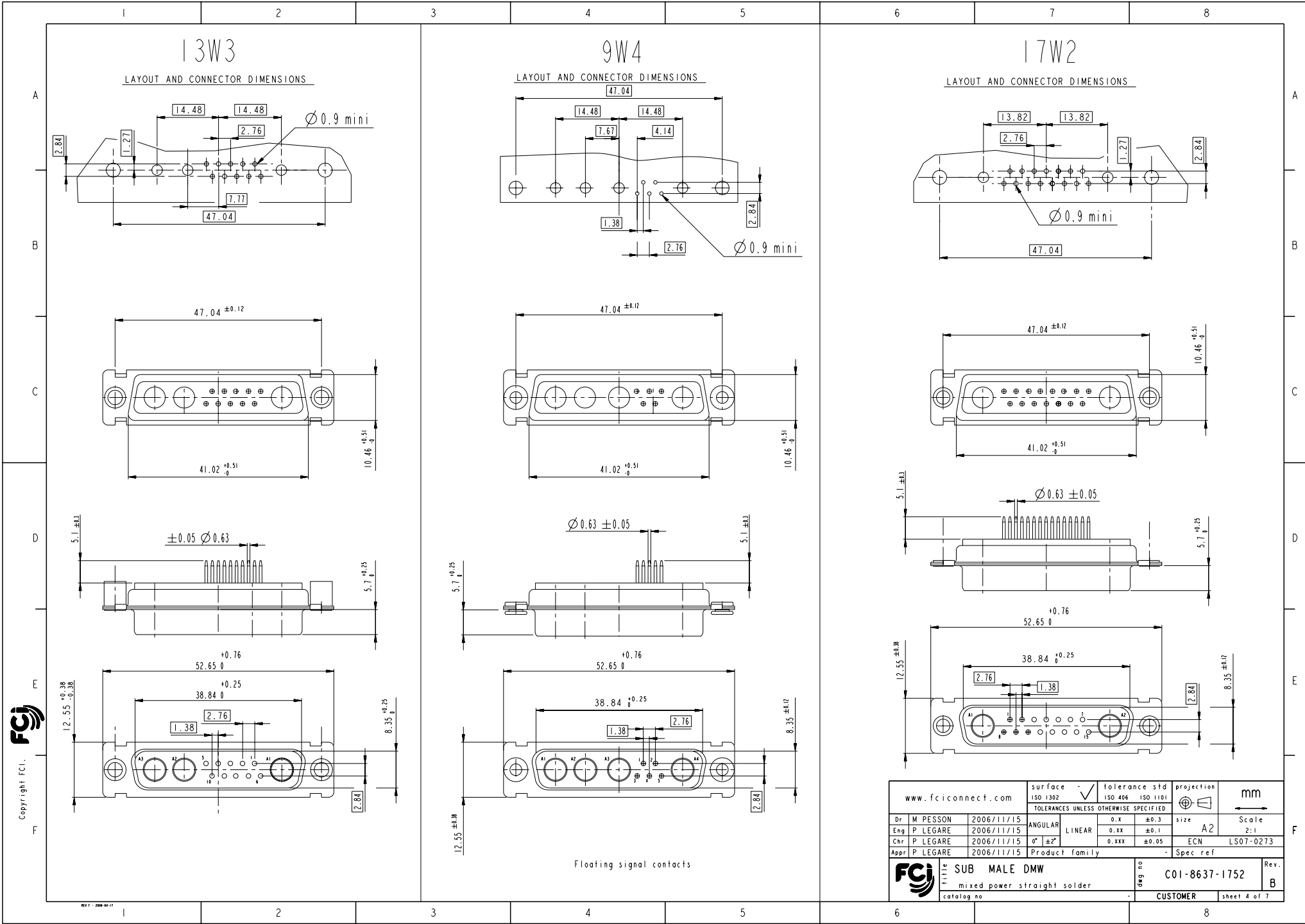


SIDE VIEW FOR LAYOUTS: E A B C



Copyright FCI.

www.fciconnect.com		surface ISO 1302	tolerance std ISO 406 ISO 1101	projection ISO 1101	mm
		TOLERANCES UNLESS OTHERWISE SPECIFIED			
Dr	M PESSON	2006/11/15	ANGULAR	0.X ±0.3	size A2 Scale 2:1
Eng	P LEGARE	2006/11/15	LINEAR	0.XX ±0.1	
Chr	P LEGARE	2006/11/15	0° ±2°	0.XXX ±0.05	ECN LS07-0273
Appr	P LEGARE	2006/11/15	Product family		Spec ref
SUB MALE DMW mixed power straight solder catalog no		title SUB MALE DMW mixed power straight solder catalog no	drawing no C01-8637-1752	revision B	customer sheet 3 of 7



13W3

LAYOUT AND CONNECTOR DIMENSIONS

9W4

LAYOUT AND CONNECTOR DIMENSIONS

17W2

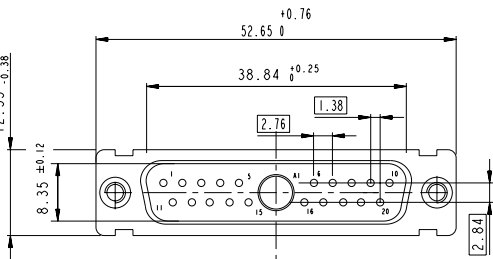
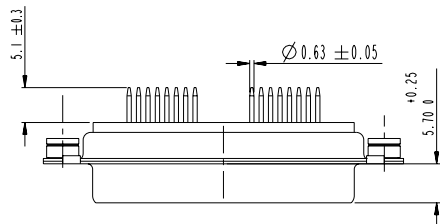
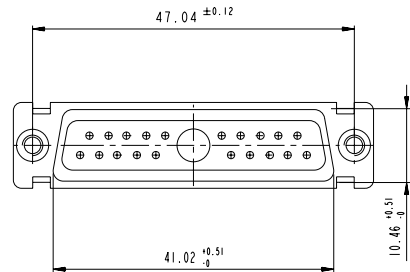
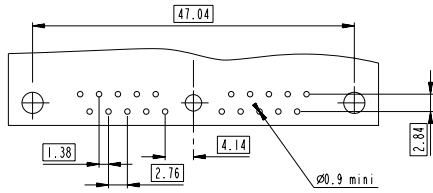
LAYOUT AND CONNECTOR DIMENSIONS

Copyright FCI
FCI

www.fciconnect.com		surface ISO 1302	tolerance std ISO 406 ISO 1101	projection mm
		TOLERANCES UNLESS OTHERWISE SPECIFIED		
Dr M PESSON	2006/11/15	ANGULAR	0.X ±0.3	size A2
Eng P LEGARE	2006/11/15	LINEAR	0.XX ±0.1	Scale 2:1
Chr P LEGARE	2006/11/15	0° ±2°	0.XXX ±0.05	ECN LS07-0273
Appr P LEGARE	2006/11/15	Product family	-	Spec ref
		SUB MALE DMW		Rev. B
mixed power straight solder		cat no C01-8637-1752		sheet 4 of 7
CUSTOMER				

21W1

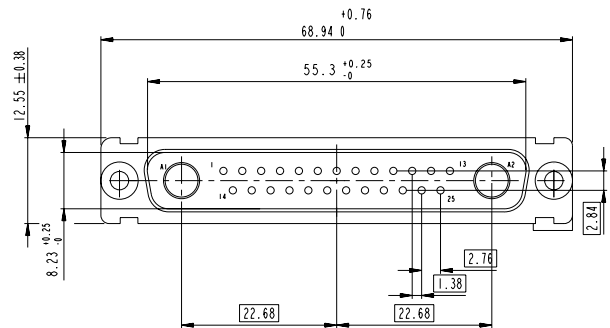
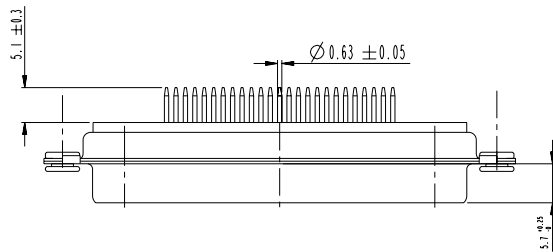
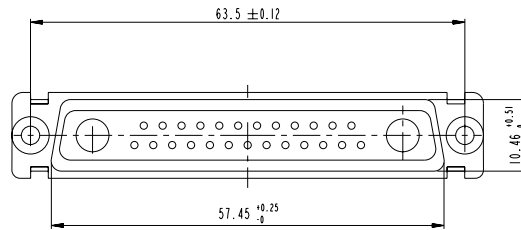
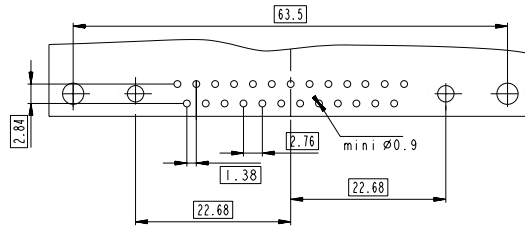
LAYOUT AND CONNECTOR DIMENSIONS



Floating signal contacts

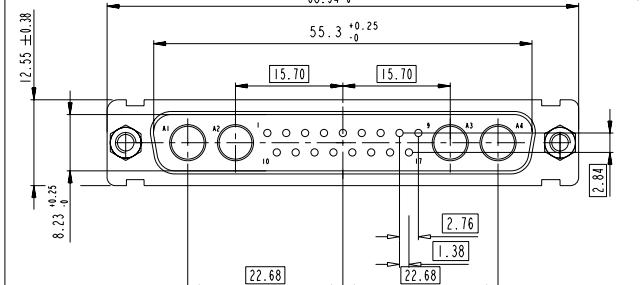
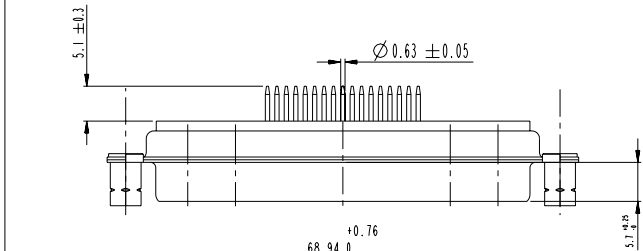
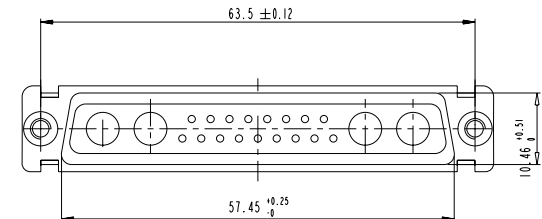
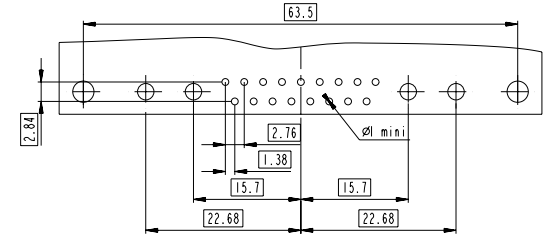
27W2

LAYOUT AND CONNECTOR DIMENSIONS



21WA4

LAYOUT AND CONNECTOR DIMENSIONS

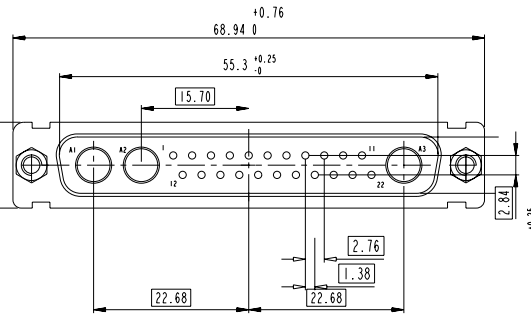
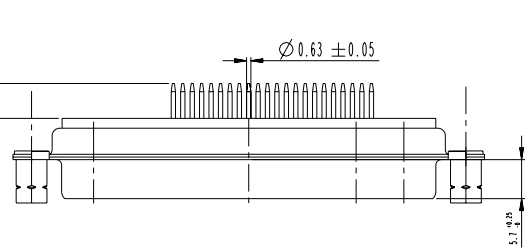
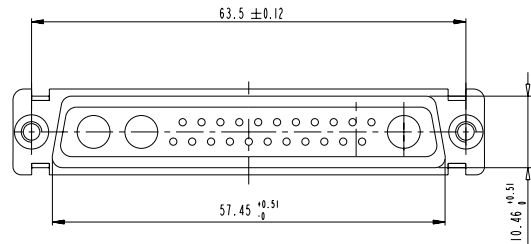
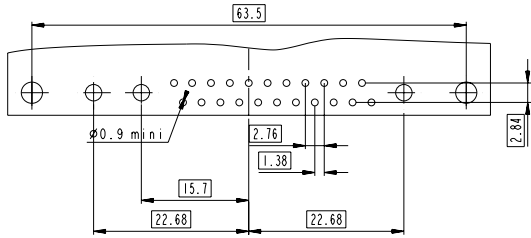


www.fciconnect.com		surface -	tolerance std	projection	mm
		ISO 1302	ISO 406 ISO 1101		
		TOLERANCES UNLESS OTHERWISE SPECIFIED			
Dr	M PESSON	2006/11/15	ANGULAR	0.X ±0.3	size A2 Scale 2:1
Eng	P LEGARE	2006/11/15	LINEAR	0.XX ±0.1	ECN LS07-0273
Chr	P LEGARE	2006/11/15	0° ±2°	0.XXX ±0.05	Product family
Appr	P LEGARE	2006/11/15			Spec ref
		SUB MALE DMW		ang no	C01-8637-1752
		mixed power straight solder		Rev.	B
		catalog no		CUSTOMER	sheet 5 of 7

Copyright FCI.

25W3

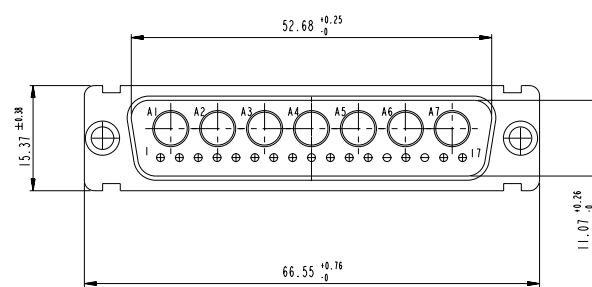
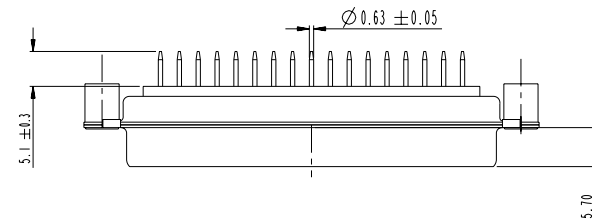
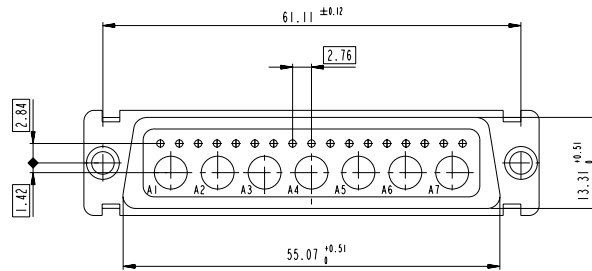
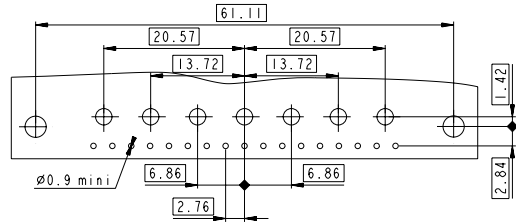
LAYOUT AND CONNECTOR DIMENSIONS



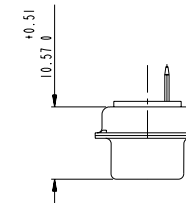
Floating signal contacts

24W7

LAYOUT AND CONNECTOR DIMENSIONS

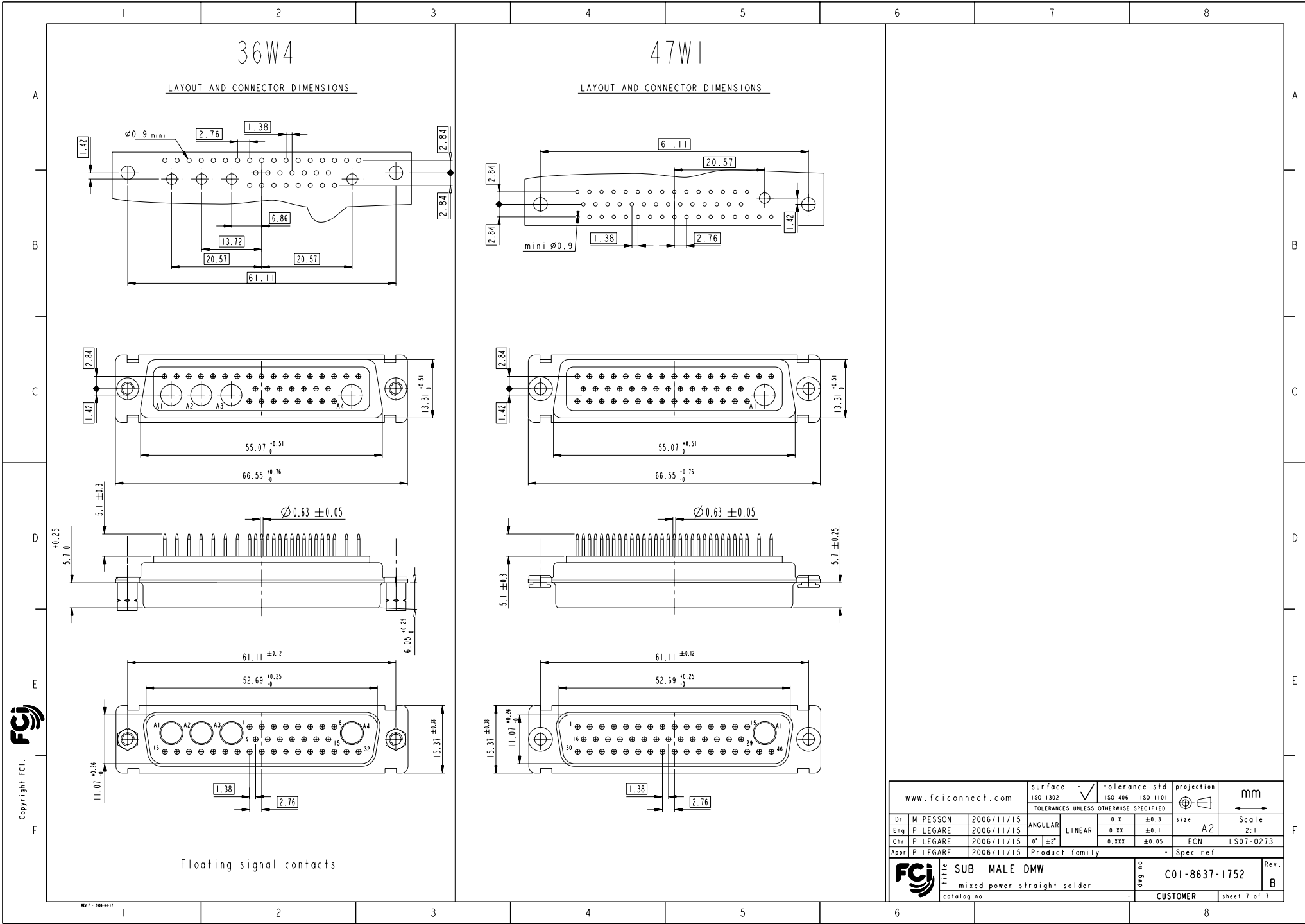


SIDE VIEW FOR LAYOUT: D



Copyright FCI

www.fciconnect.com		surface ISO 1302	tolerance std ISO 406 ISO 1101	projection mm
		TOLERANCES UNLESS OTHERWISE SPECIFIED		
Dr	M PESSON	2006/11/15	0.X ± 0.3	size A2
Eng	P LEGARE	2006/11/15	0.xx ± 0.1	Scale 2:1
Chr	P LEGARE	2006/11/15	0.xxx ± 0.05	ECN LS07-0273
Appr	P LEGARE	2006/11/15	Product family	Spec ref
FCI		SUB MALE DMW		Rev. B
Title		mixed power straight solder		Rev. B
Catalog no		C01-8637-1752		sheet 6 of 7
		CUSTOMER		

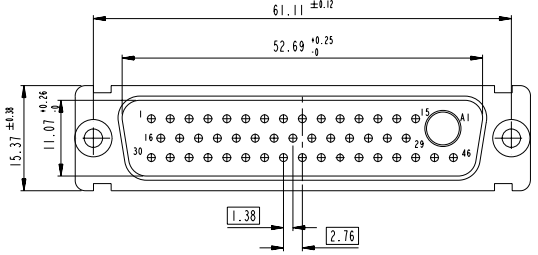
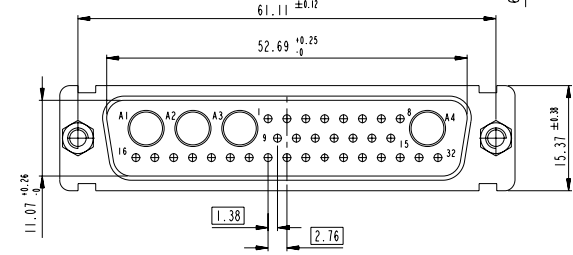
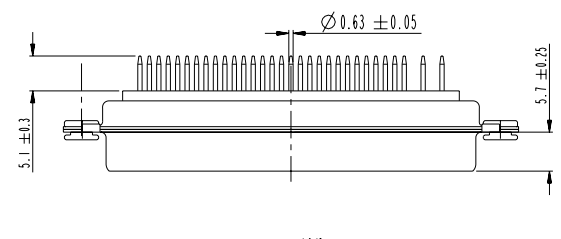
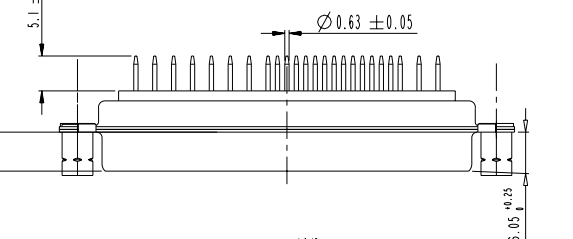
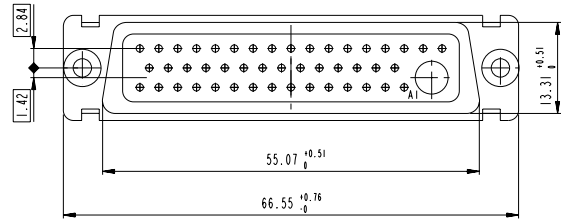
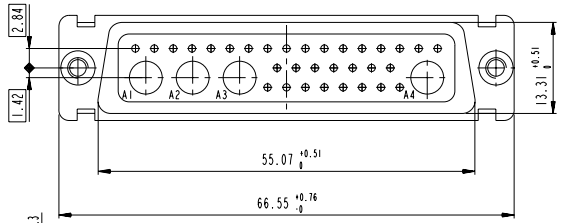
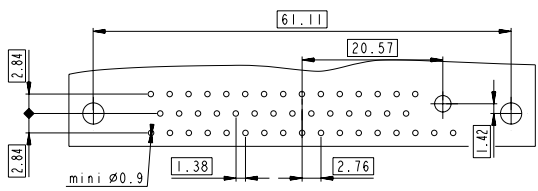
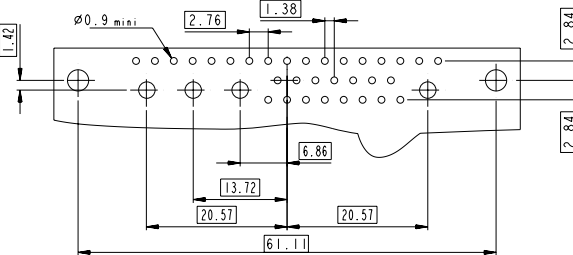


36W4

LAYOUT AND CONNECTOR DIMENSIONS

47W1

LAYOUT AND CONNECTOR DIMENSIONS



Floating signal contacts

www.fciconnect.com		surface -	tolerance std	projection	mm
		ISO 1302	ISO 406 ISO 1101		
		TOLERANCES UNLESS OTHERWISE SPECIFIED			
Dr	M PESSON	2006/11/15	ANGULAR	0.X ±0.3	size A2 Scale 2:1
Eng	P LEGARE	2006/11/15	LINEAR	0.XX ±0.1	
Chr	P LEGARE	2006/11/15	Ø ±2°	0.XXX ±0.05	ECN LS07-0273
Appr	P LEGARE	2006/11/15	Product family	-	Spec ref
		SUB MALE DMW		ang no	C01-8637-1752
		mixed power straight solder		Rev.	B
catalog no		CUSTOMER		sheet 7 of 7	

Copyright FCI.