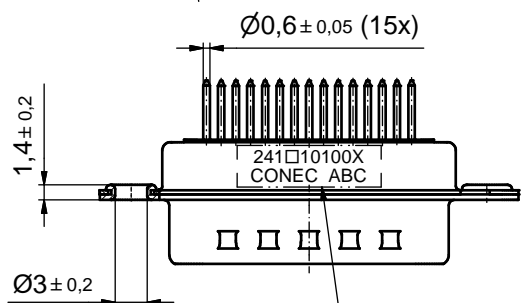
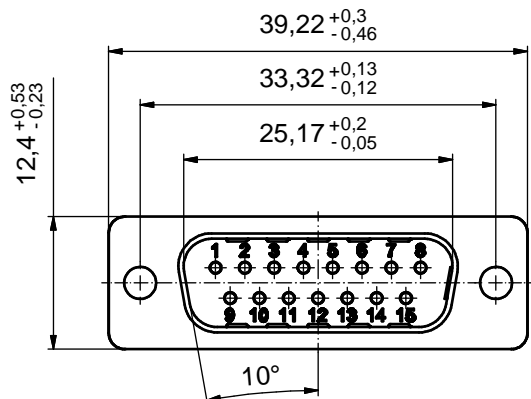
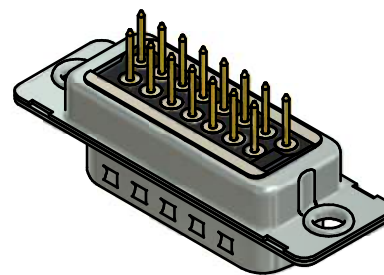
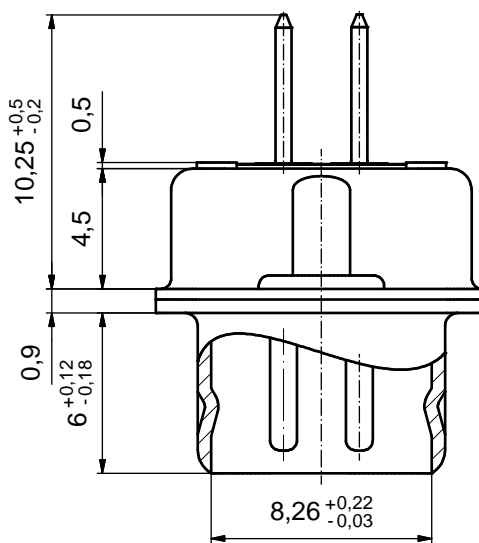
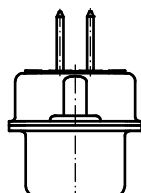


P.C.B. HOLE DRILLINGS  
(P.C.B. TOP SIDE)

(5 : 1)



SEE NOTE 7



NOTES:

1. FOR WAVESOLDERING (SOLDER BATH TEMPERATURE 260°C FOR 5 SEC. AND SOLDER PREHEAT 100°C FOR 30 SEC.)
2. METALSHELLS: STEEL; min. 315µm TIN over 40-80µm NICKEL
3. INSULATOR: HIGH TEMPERATURE PLASTIC UL 94 V-0, BLACK
4. CONTACTS: COPPER ALLOY; PLATING (SEE PART NO.):
  - PLEASE ADD A for GOLD FLASH over NICKEL (PREFERRED TYPE)
  - PLEASE ADD B for 20µm HARD GOLD over min. 50µm NICKEL
  - PLEASE ADD C for 30µm HARD GOLD over min. 50µm NICKEL
 CONTACT TAILS PRETINNED
5. DIELECTRIC WITHSTANDING VOLTAGE: 424 VDC
6. CAPACITANCE: 830pF ± 20%
7. CONNECTOR IS PART MARKED: **241□10100X CONEC ABC** (see note 4)

RoHS compliant

THIS DRAWING MAY NOT BE COPIED OR REPRODUCED IN ANY WAY, AND MAY NOT BE PASSED ON TO A THIRD PARTY WITHOUT WRITTEN PERMISSION. OWNERSHIP AND COPYRIGHT OF CONEC GmbH DO NOT ALTER CAD DRAWING BY HAND				tolerance		scale: 2:1 (5:1)
				dim. in mm		material: SEE NOTES
				date	name	title: <b>D-SUB C-FILTER MALE</b> 15pos. SOLDER PIN STRAIGHT
				drawn 23.09.2015	Heinrich	
				appd. 23.09.2015	Lehmenkühler	
				norm		
				d-old		dwg no:
a	Original		<b>CONEC</b>		24K1A1635	DIN-A3
rev.	description	date			name	part no: 241□10100X (see note 4)