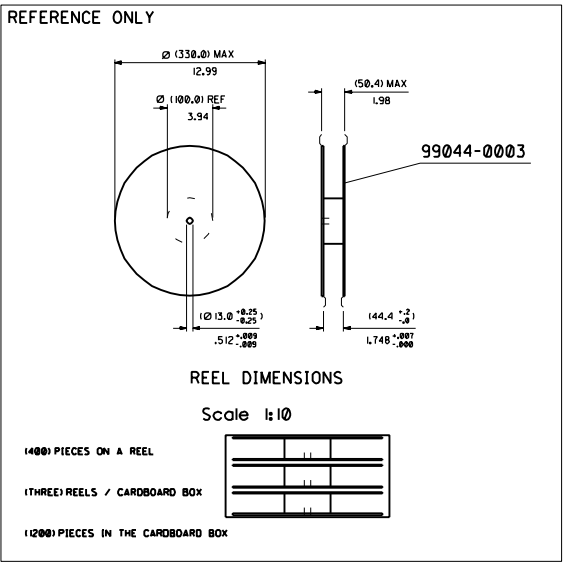


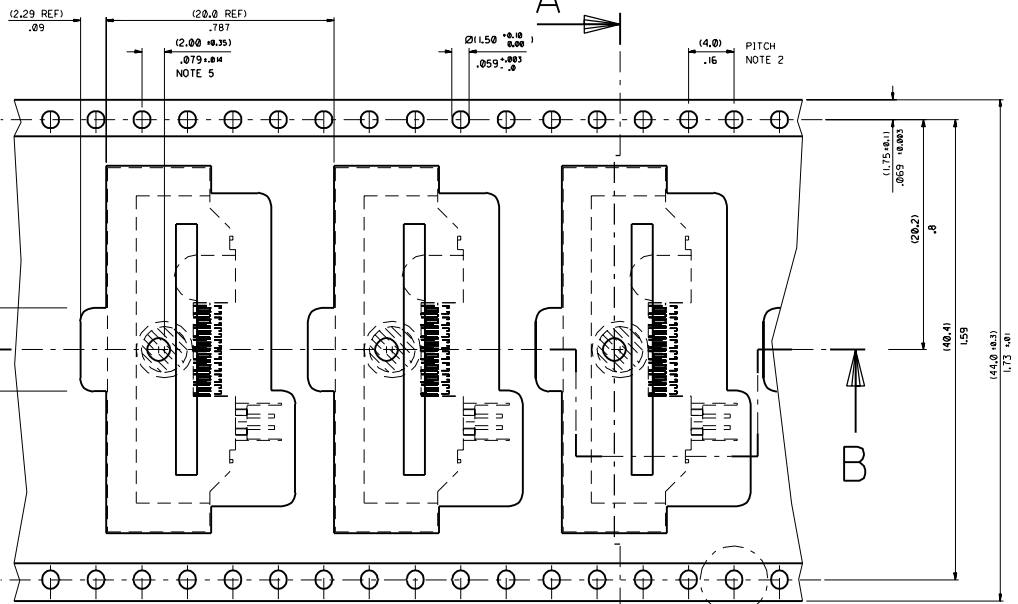
SECTION A - A

Scale 2:1



REEL DIMENSIONS

Scale 1:10

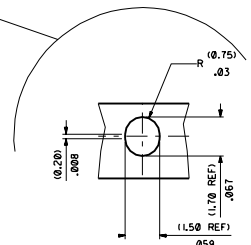


SECTION B - B

DIRECTION OF UNREELING



MOLEX REEL



Scale 10:1

NOTES:

- 1) MATERIAL : CARRIER TAPE : VOLUME CONDUCTIVE POLYCARBONATE , 10.371 .014 REF THICK , BLACK COVER TAPE : COLD SEAL POLYESTER , 10.061 .002 REF THICK , TRANSPARENT
- 2) PITCH TOLERANCE OVER ANY 10 PITCHES : +/- 0.21 .008
- 3) PEEL FORCE OF THE COVER TAPE IS 0. IN TO 1.0N AT A MAXIMUM PEEL SPEED OF 13000 11.81/min +/- 10%
- 4) PACKAGING SPEC. TBA
- 5) REFERENCE TO IEC 286-3 EXCEPT WHERE NOTED

FOR PREVIOUS DRAWING ISSUES SEE MRL	PROJECT UPDATED	DATE	BY	REVISED	DATE	BY	REVISED	DATE	BY	REVISED	DATE	BY	REVISED	DATE	BY		
	A 3																
	DATE	SCALE	REVISIONS		CHECKED		APPROVED		DESIGNED		DRAWN		FILED				
	11/10	5:1	DAB		DAB		DAB		DAB		DAB		DAB				
REVISE ONLY ON CAD SYSTEM												SCALE		SHEET NO		DATE	
BLISTER PACKAGING FOR 90811-9002												10:1		94/11/10			
MOLEX EUROPE												50A-90811-0002		94/11/10			
PART NO												SCALE		SHEET NO		DATE	
90811-0002												5:1		10:1		94/11/10	