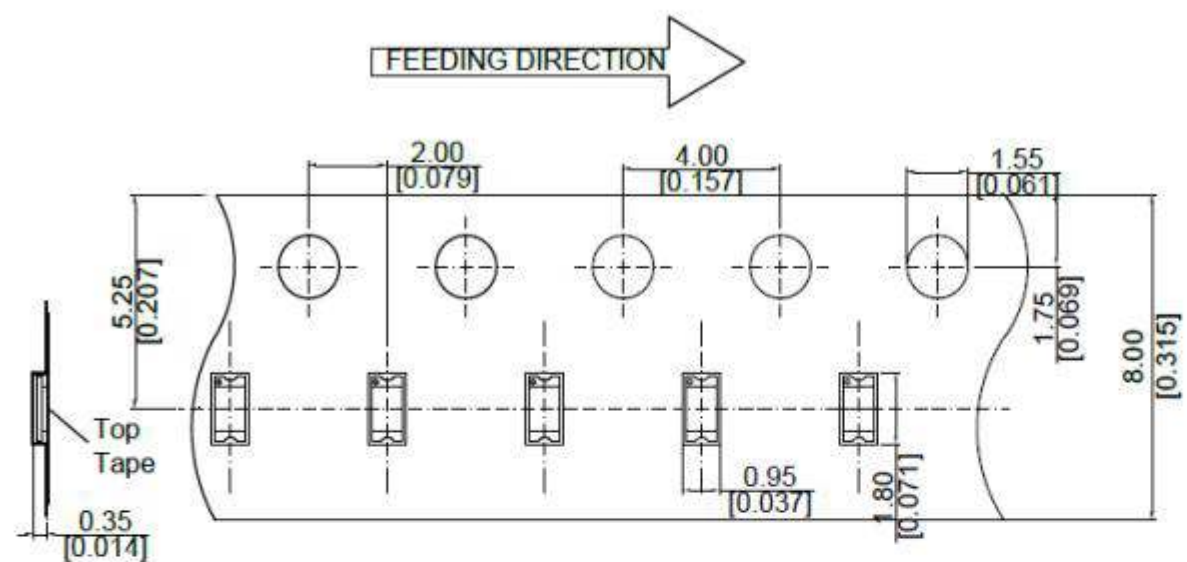


DIALIGHT PART NO.	LED COLOR	LENS COLOR
598-2N00-107F	WHITE (X=0.27, Y=0.25)	YELLOW DIFFUSED
598-2N00-102F		

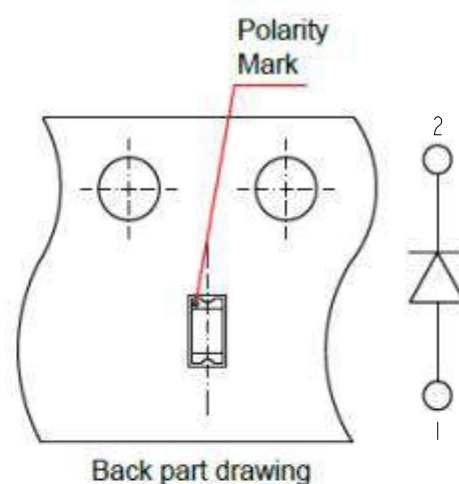
REV	ECN NO	REVISIONS	DRN	CKD	APP	DATE
A	103746	NEW RELEASE	JSG	CS	NO	27FEB23

- NOTES:
- PIN NUMBERS ARE FOR REFERENCE ONLY, DESIGNATION NON-EXISTENT ON PART.
 - LABELING FOR REEL AND OUTSIDE OF ALUMINUM BAG, DIALIGHT P/N, QUANTITY PER REEL, DATE CODE, INTENSITY BIN CODE, LOT NUMBER AND COUNTRY OF ORIGIN.
 - THIS PRODUCT IS RoHS COMPLIANT. EACH BAG IS TO BE MARKED WITH RoHS COMPLIANT LABEL OR EQUIVALENT MARKINGS. LED MUST BE Pb FREE.
 - MOISTURE SENSITIVITY LEVEL 3.
 - QUANTITY : PART NUMBERS END WITH 107F REFER AS 4000 PCS/ REEL
PART NUMBERS END WITH 102F REFER AS 20 PCS/ STRIP

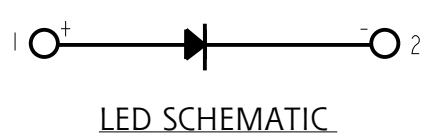
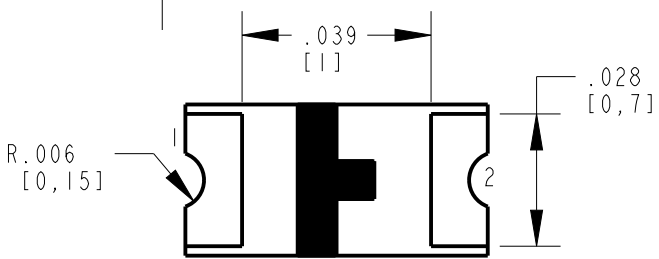
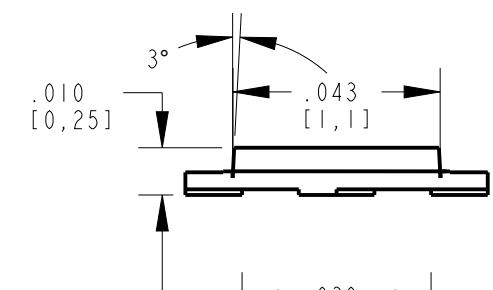
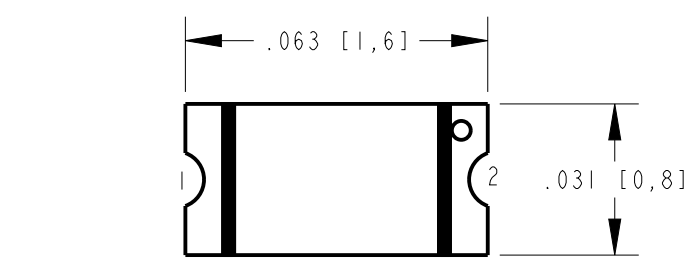
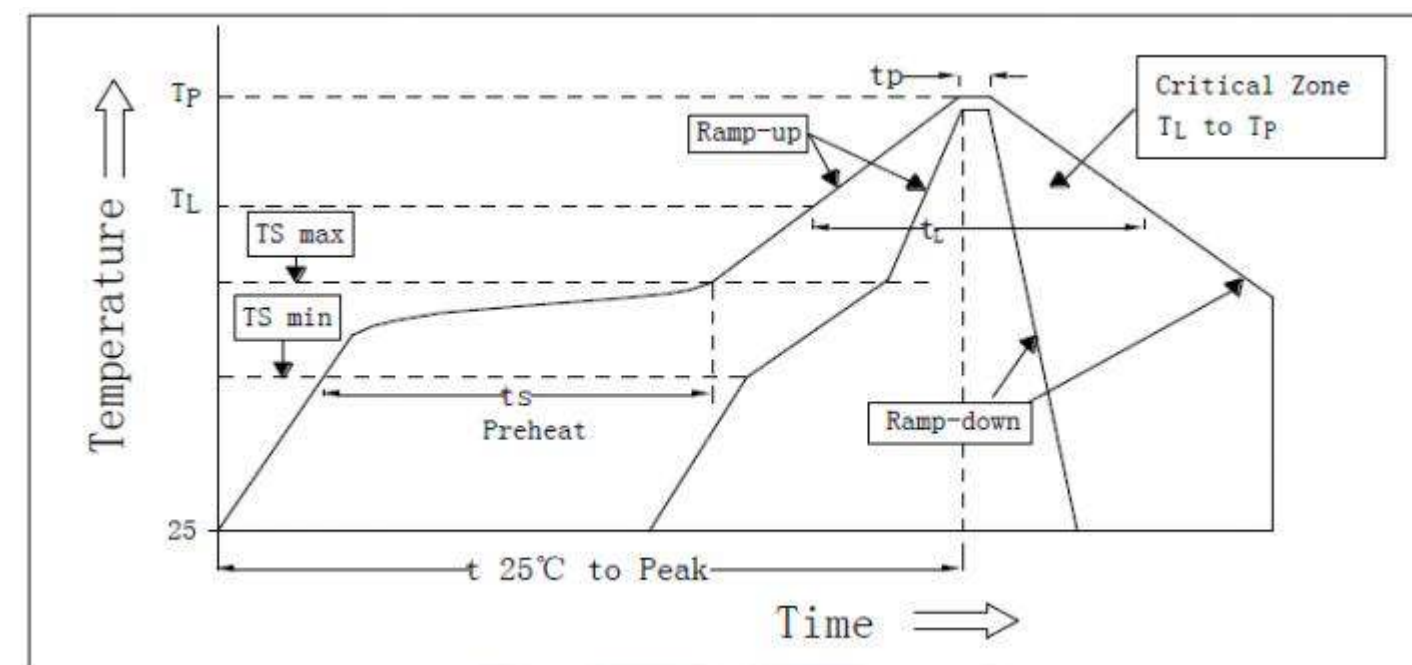
Carrier Tape Dimension



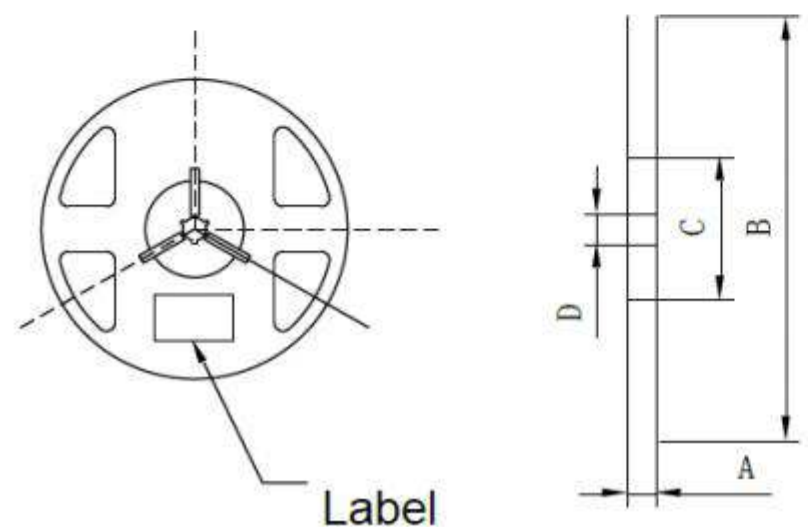
TAPING SPECIFICATIONS



RECOMMENDED RoHS SOLDER PROFILE



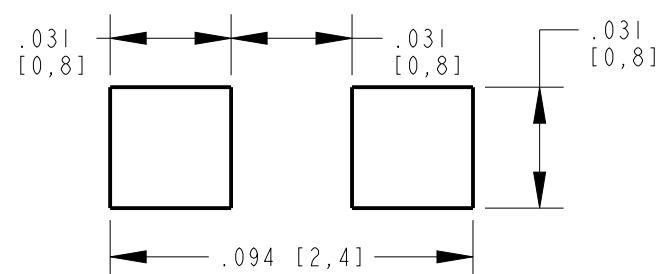
Reel Dimension



TOLERANCE (UNLESS OTHERWISE SPECIFIED): ±0.003(±0.1mm)

A	8.0±0.1mm
B	178±1mm
C	60±1mm
D	13.0±0.5mm

MARK	DEFINITION	CONDITION
TS _{max}	MAXIMUM OF PRE-HEATING TEMPERATURE	200°C
TS _{min}	MINIMUM OF PRE-HEATING TEMPERATURE	150°C
ts	TIME FROM T _{sm} TO T _{sm}	60s-120s
TL	REFERENCE TEMPERATURE	217°C
tL	RETENTION TIME FOR TL	60s-150s
Tp	PEAK TEMPERATURE	260°C
tp	TIME FOR PEAK TEMPERATURE	WITHIN 10s
DTr/Dt	TEMPERATURE RISING RATE	WITHIN 3°C/sec
DTd/Dt	TEMPERATURE DECREASING RATE	WITHIN 6°C/sec



RECOMMENDED SOLDER PAD LAYOUT

ABSOLUTE MAXIMUM RATINGS AT 25°C							
LED COLOR	POWER DISSIPATION (mW)	FORWARD CURRENT (mA)	PEAK FORWARD CURRENT (mA) 1/10 DUTY CYCLE, 0.1ms PULSE WIDTH	OPERATING TEMPERATURE (°C)	STORAGE TEMPERATURE (°C)	DERATING CURVE (mA/°C)	ELECTROSTATIC DISCHARGE (V)
WHITE	102	30	60	-40°C TO +85°C	-40°C TO +85°C	0.416	1000

OPERATING CHARACTERISTICS AT 25°C AMBIENT										
LED COLOR	TEST CONDITION (mA)	LUMINOUS INTENSITY (mcd)		FORWARD VOLTAGE (V)		DOMINANT WAVELENGTH (nm)		REVERSE CURRENT (uA)	VIEWING ANGLE (DEGREES)	THERMAL RESISTANCE °C/W
		MIN	MAX	MIN	MAX	MIN	MAX			
WHITE	20mA	430	1000	2.8	3.4	*X=0.272 Y=0.258	10µA @ VR=5V	140	450	

*CALCULATED CHROMATICITY COORDINATES (TYP)



ATTENTION:
OBSERVE PRECAUTIONS FOR
HANDLING ELECTROSTATIC
SENSITIVE DEVICES

THIS DRAWING AND THE CONTENTS HEREIN ARE CONFIDENTIAL AND THE SOLE PROPERTY OF DIALIGHT CORP. REPRODUCTION OF THIS DRAWING OR CONSTRUCTION OF ANY PARTS WITHIN THIS DRAWING ARE FORBIDDEN WITHOUT THE WRITTEN CONSENT OF DIALIGHT CORP.		
DIALIGHT CORP. INTERNAL REFERENCE ONLY - 3D MODEL: 4500521862423-PADLA1001-A-2		
SCALE: 25.000	DRAWING NUMBER	REV
ALL DIM'S IN: INCHES (MM)	C-18662	A
TOLERANCES: UNLESS OTHERWISE SPECIFIED	TITLE	
FRACTIONS: ±1/64	SMD 0603 LED WHITE W/ YELLOW DIFFUSED LENS	
DECIMALS (.XX): ±.01	MATERIAL	
DECIMALS (.XXX): ±.005		
DECIMALS (.XXXX): ±.0005		
ANGLES: ±1°		
FINISH	Dialight	
FSCM 83330	1501 ROUTE 34 SOUTH FARMINGDALE, NJ 07727 (732) 919-3119 www.dialight.com	
SHEET 1 OF 1	FAMILY TABLE:	