



- Universal Input (85 - 265VAC)
- Power Factor Corrected
- 200% Peak Power capability on 24V output
- 2 Year Warranty
- Individual output adjustment

## ZWD-PAF Series

100W to 440W

Dual Output Power Supplies

### Key Market Segments & Applications

Factory Automation  
Printer and Motor Drives  
Kiosks

### ZWD-PAF Features and Benefits

#### Features

- Input Transient Protected
- Power Factor Corrected
- 200% Peak Power Capability

#### Benefits

- Withstands Harsh Environments
- Supports Global Use
- Can Drive High current Start Up Devices or pulse loads

### Specifications

| ITEMS                     | MODEL    | ZWD100PAF-0524   | ZWD150PAF-0524       | ZWD225PAF-0524        |
|---------------------------|----------|--|----------------------|-----------------------|
| Input Voltage             | -        | 85-265VAC (47-63Hz), 120-370VDC  |                      |                       |
| Input Current             | (1) A    | 1.3 / 0.65   | 1.9 / 0.97           | 2.81 / 1.43           |
| Inrush Current            | (1)(2) A | 15 / 30  |                      |                       |
| Power Factor              | -        | 0.99 at 100VAC, 0.95 at 200VAC, Meets EN61000-3-2                                      |                      |                       |
| Leakage Current           | mA       | 0.75mA max   |                      |                       |
| Temperature Coefficient   | -        | <0.02%/°C  |                      |                       |
| Overcurrent Protection    | (3) -    | 5V output: >105%, 24V output: >205%  |                      |                       |
| Overvoltage Protection    | (4) V    | 120- 145%  |                      |                       |
| Hold Up Time (Typ)        | (1) ms   | 5V output: 40ms, 24V output: 20ms  |                      |                       |
| Efficiency                | (2) %    | 79 / 81  | 80 / 82              | 81 / 83               |
| Remote On/Off             | -        | On 24V output only, remove jumper to shutdown  |                      |                       |
| Line Regulation           | mV       | 5V output: 20mV, 24V output: 96mV  |                      |                       |
| Load Regulation           | mV       | 5V output: 40mV, 24V output: 150mV   |                      |                       |
| Ripple & Noise            | mV       | 5V output: 120mV, 24V output: 150mV  |                      |                       |
| Operating Temperature     | -        | (Open frame or L bracket) -10°C to +70°C, derate linearly to 0% load from 50°C to 70°C |                      |                       |
| Operating Temperature     | -        | (With /A cover option) -10°C to +60°C, derate linearly to 0% load from 40°C to 60°C    |                      |                       |
| Storage Temperature       | -        | -30 to +85°C   |                      |                       |
| Humidity (non condensing) | -        | Operating: 20 - 90%RH, Non-operating: 10 - 95% RH                                      |                      |                       |
| Cooling                   | -        | Convection cooled  |                      |                       |
| Withstand Voltage         | -        | I/P to Gnd 2kVAC (20mA), I/P to O/P 3kVAC (20mA), O/P to Gnd 500VAC (100mA) for 1 min. |                      |                       |
| Isolation Resistance      | -        | >100M at 25°C & 70%RH, Output to Ground 500VDC   |                      |                       |
| Vibration (non operating) | -        | 10 - 55Hz (1 minute sweep), 19.6m/s <sup>2</sup> constant X, Y, Z 1 hour               |                      |                       |
| Shock                     | -        | < 196.1 m/s <sup>2</sup>   |                      |                       |
| Safety Agency Approvals   | -        | IEC/UL/CSA/EN62368-1, 60950-1, CE Mark   |                      |                       |
| Conducted & Radiated EMI  | -        | EN55022-B, FCC Class B, VCCI-B   |                      |                       |
| Immunity                  | -        | EN61000-4-2, -3, -4, -5, -6, -8, -11   |                      |                       |
| Weight (Typ)              | g        | 460 (780 with cover)   | 530 (885 with cover) | 670 (1065 with cover) |
| Size (WxHxD)              | mm       | 222 x 75 x 35  | 222 x 85 x 40        | 222 x 95 x 45         |
| Warranty                  | yrs      | 2 Years  |                      |                       |

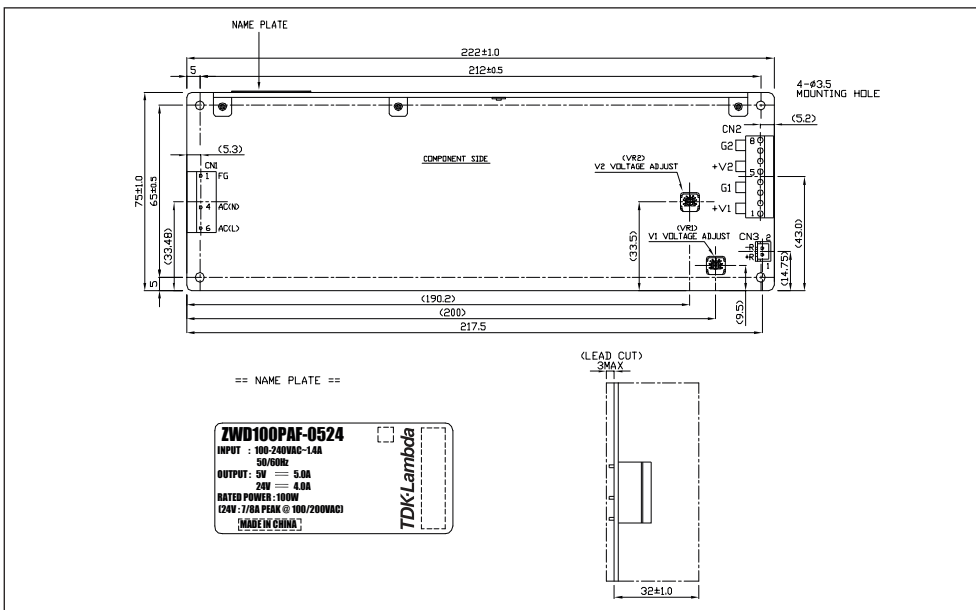
**Notes:** See installation manual for full specification.

(1) 100/200VAC (2) 25°C ambient (cold start) (3) Avoid prolonged operation in overload (4) OVP on 24V output will shutdown 24V output only

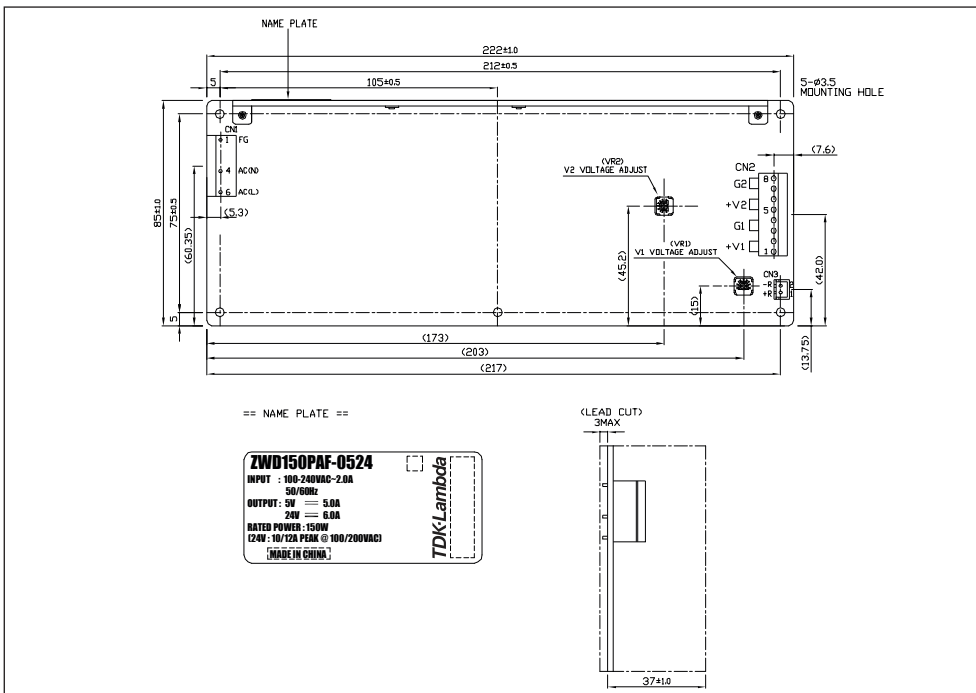
Model Selector

| Model          | Output Voltage | Output Voltage Accuracy | Adjust Range | Max Current | Peak <sup>1,5</sup> Current | Max Peak <sup>1,5</sup> Power | Total <sup>1,5</sup> Average Power | Peak Power |
|----------------|----------------|-------------------------|--------------|-------------|-----------------------------|-------------------------------|------------------------------------|------------|
| ZWD100PAF-0524 | 5V             | 4.9 - 5.1V              | 4.5 - 5.5V   | 5A          | -                           | -                             | 100W                               | 172 / 196W |
|                | 24V            | 23.52 - 24.48V          | 22.8 - 27.6V | 4A          | 7 / 8A                      | 168 / 192W                    |                                    |            |
| ZWD150PAF-0524 | 5V             | 4.9 - 5.1V              | 4.5 - 5.5V   | 5A          | -                           | -                             | 150W                               | 246 / 294W |
|                | 24V            | 23.52 - 24.48V          | 22.8 - 27.6V | 6A          | 10 / 12A                    | 240 / 288W                    |                                    |            |
| ZWD225PAF-0524 | 5V             | 4.9 - 5.1V              | 4.5 - 5.5V   | 5A          | -                           | -                             | 225W                               | 344 / 440W |
|                | 24V            | 23.52 - 24.48V          | 22.8 - 27.6V | 9A          | 14 / 18A                    | 336 / 432W                    |                                    |            |

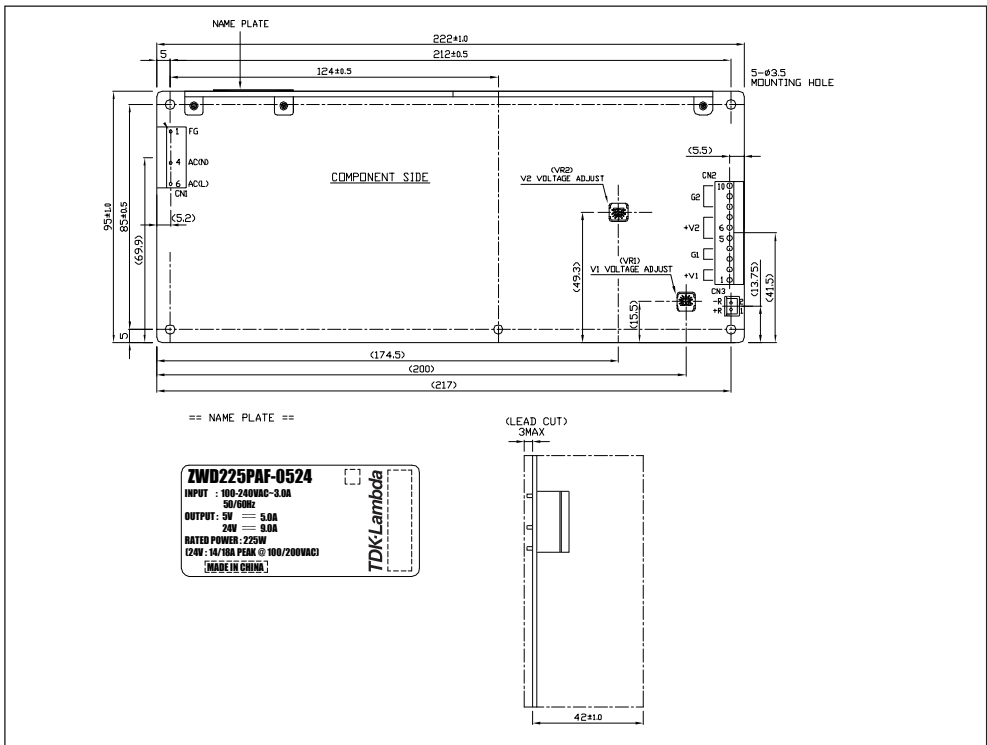
Outline Drawing ZWD100 Series



Outline Drawing ZWD150 Series



## Outline Drawing ZWD225 Series



**Notes:**

- (5) ZWD100PAF: For <10s max, duty cycle ≤0.35
- ZWD150PAF: Up to 10A peak, <10s max, duty cycle ≤0.35; from 10-12A, <5s, duty cycle ≤0.2
- ZWD225PAF: Up to 14A peak, <10s max, duty cycle ≤0.35; from 14-18A, <5s, duty cycle ≤0.2

| Options |                                |
|---------|--------------------------------|
| Suffix  | Description                    |
| blank   | Molex Input & Output Connector |
| /L      | L Bracket                      |
| /A      | Cover & L Bracket              |
| /J      | JST Input & Output Connector   |
| /T      | Vertical Mount Screw Terminals |

Preferred option combination: blank, /L, /TL, or /TA

Example: **ZWD100PAF-0524/TA**



## TDK-Lambda France SAS

Tel: +33 1 60 12 71 65  
tlf.fr.powersolutions@tdk.com  
www.emea.lambda.tdk.com/fr



## Italy Sales Office

Tel: +39 02 61 29 38 63  
tlf.it.powersolutions@tdk.com  
www.emea.lambda.tdk.com/it



## Netherlands

tlf.nl.powersolutions@tdk.com  
www.emea.lambda.tdk.com/nl



## TDK-Lambda Germany GmbH

Tel: +49 7841 666 0  
tlg.powersolutions@tdk.com  
www.emea.lambda.tdk.com/de



## Austria Sales Office

Tel: +43 2256 655 84  
tlg.at.powersolutions@tdk.com  
www.emea.lambda.tdk.com/at



## Switzerland Sales Office

Tel: +41 44 850 53 53  
tlg.ch.powersolutions@tdk.com  
www.emea.lambda.tdk.com/ch



## Nordic Sales Office

Tel: +45 8853 8086  
tlg.dk.powersolutions@tdk.com  
www.emea.lambda.tdk.com/dk



## TDK-Lambda UK Ltd.

Tel: +44 (0) 12 71 85 66 66  
tlu.powersolutions@tdk.com  
www.emea.lambda.tdk.com/uk



## TDK-Lambda Ltd.

Tel: +9 723 902 4333  
tli.powersolutions@tdk.com  
www.emea.lambda.tdk.com/il-en



## TDK-Lambda Americas

Tel: +1 800-LAMBDA-4 or 1-800-526-2324  
tla.powersolutions@tdk.com  
www.us.lambda.tdk.com



## TDK Electronics do Brasil Ltda

Tel: +55 11 3289-9599  
sales.br@tdk-electronics.tdk.com  
www.tdk-electronics.tdk.com/en



## TDK-Lambda Corporation

Tel: +81-3-6778-1113  
www.jp.lambda.tdk.com



## TDK-Lambda (China) Electronics Co. Ltd.

Tel: +86 21 6485-0777  
tlc.powersolutions@tdk.com  
www.lambda.tdk.com.cn



## TDK-Lambda Singapore Pte Ltd.

Tel: +65 6251 7211  
tts.marketing@tdk.com  
www.sg.lambda.tdk.com



## TDK India Private Limited, Power Supply Division

Tel: +91 80 4039-0660  
mathew.philip@tdk.com  
www.sg.lambda.tdk.com

