

DO NOT SCALE FROM THIS PRINT

QXH MATED VIEWS

DESIGNED & DIMENSIONED IN INCHES[MILLIMETERS]

FIGURE 1 QSH-D-XX MATED WITH QTH-D-XX

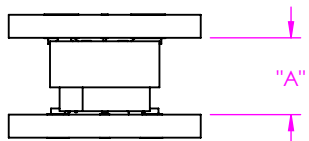


FIGURE 2 QTH-D-XX MATED WITH QSH-D-XX-EMX

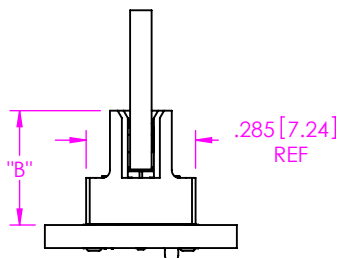


FIGURE 3 QSH-D-XX MATED WITH QTH-D-XX-EMX

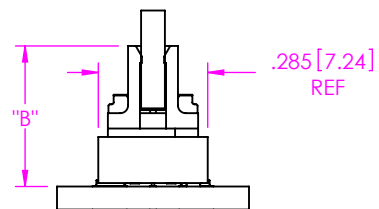


FIGURE 4 QSH-D-XX-EMX MATED WITH QTH-D-XX-EMX

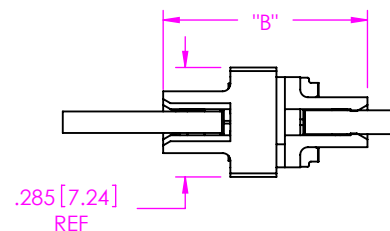


FIGURE 5 QSH-D-XX-RA MATED WITH QTH-D-XX-RA

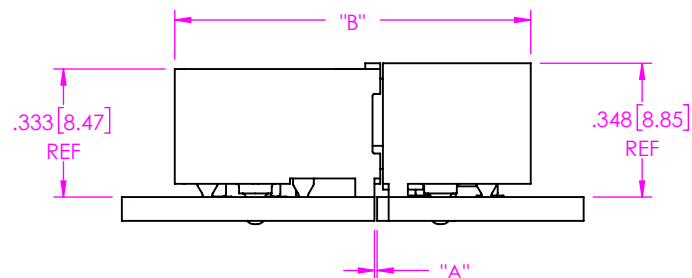


TABLE 2			TABLE 3		
	QSH- LEAD STYLE			QSH-EM LEAD STYLE	
		-01			-01
QTH LEAD STYLE	-01	.198 [5.03]	QTH LEAD STYLE	-01	.365 [9.27]
	-02	.316 [8.03]		-02	.483 [12.27]
	-03	.434 [11.03]		-03	.601 [15.27]
	-04	.630 [16.00]		-04	.797 [20.25]
	-05	.748 [19.00]		-05	.915 [23.24]
	-06	.866 [22.00]		-06	1.033 [26.24]
	-07	.984 [25.00]		-07	1.151 [29.24]
	-08	1.181 [30.00]		-08	1.348 [34.24]
	-09	.552 [14.03]		-09	.719 [18.27]
	-10	.592 [15.03]		-10	.759 [19.27]

TABLE 1						
	Fully Mated Board to Board Dimension ("A")	Max Board to Board Dimension ("A")	Fully Mated Connector to Connector Dimension ("B")	Max Connector to Connector Dimension ("B")	Min Contact Wipe	Max Contact Wipe
FIG 1) QSH / QTH	See Table 2	= Stack Height + .007 [.178]	N/A	N/A	.015 [0.381]	.022 [0.56]
FIG 2) QTH / QTH-EM	N/A	N/A	See Table 3	= Stack Height + .007 [.178]	.015 [0.381]	.022 [0.56]
FIG 3) QSH / QTH-EM	N/A	N/A	0.366 [9.30]	0.373 [9.47]	.015 [0.381]	.022 [0.56]
FIG 4) QSH-EM / QTH-EM	N/A	N/A	0.532 [13.51]	0.539 [13.69]	.015 [0.381]	.022 [0.56]
FIG 5) QSH-RA / QTH-RA	0.007 [0.18]	0.028 [0.71]	0.927 [23.55]	0.948 [24.08]	.015 [0.381]	.036 [0.91]

NOTES:

1. ALL DIMENSIONS BASED ON NOMINAL VALUES FOR SAMTEC RECOMMENDED PCB LAYOUTS.
2. ALTHOUGH MAX DIMENSIONS ARE LISTED SAMTEC RECOMMENDS FULLY MATING COMPONENTS.

PROPRIETARY NOTE
 THIS DOCUMENT CONTAINS CONFIDENTIAL AND PROPRIETARY INFORMATION AND ALL DESIGN, MANUFACTURING, REPRODUCTION, USE, PATENT RIGHTS AND SALES RIGHTS ARE EXPRESSLY RESERVED BY SAMTEC, INC. THIS DOCUMENT SHALL NOT BE DISCLOSED, IN WHOLE OR PART, TO ANY UNAUTHORIZED PERSON OR ENTITY NOR REPRODUCED, TRANSFERRED OR INCORPORATED IN ANY OTHER PROJECT IN ANY MANNER WITHOUT THE EXPRESS WRITTEN CONSENT OF SAMTEC, INC.



520 PARK EAST BLVD, NEW ALBANY, IN 47150
 PHONE: 812-944-6733 FAX: 812-948-5047
 e-Mail info@SAMTEC.com code 55322

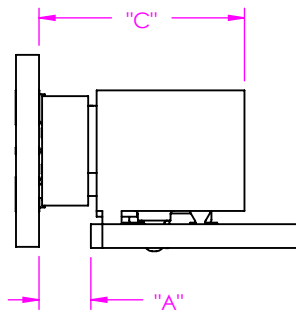


FIGURE 6
QSH-D-XX MATED WITH QTH-D-XX-RA

TABLE 4: STACK HEIGHTS - FULLY MATED			
		QTH- RA LEAD STYLE	
		-01	
		"A"	"C"
QSH LEAD STYLE	-01	.135 [3.43]	.535 [13.59]
	-11	.136 [3.45]	.536 [13.61]

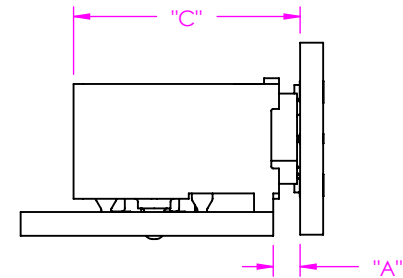


FIGURE 7
QTH-D-XX MATED WITH QSH-D-XX-RA

TABLE 5: STACK HEIGHTS - FULLY MATED			
		QSH- RA LEAD STYLE	
		-01	
		"A"	"C"
QTH LEAD STYLE	-01	.070 [1.78]	.590 [14.99]
	-02	.188 [4.78]	.708 [17.99]
	-03	.306 [7.78]	.826 [20.99]
	-04	.502 [12.75]	1.022 [25.96]
	-05	.620 [15.75]	1.140 [28.96]
	-06	.738 [18.75]	1.258 [31.96]
	-07	.856 [21.75]	1.376 [34.96]
	-08	1.053 [26.75]	1.573 [39.96]
	-09	.126 [3.20]	.646 [16.41]
	-10	.464 [11.78]	.984 [24.99]

TABLE 6

Mated Pair	Fully Mated Board to Board Dimension "A" with Contact Wipe of .018" [0.46mm]	Maximum Allowable Board to Board Dimension "A" to Maintain Minimum Contact Wipe of .015" [0.38mm]	Fully Mated Connector to Board Dimension "C" with Contact Wipe of .018" [0.46mm]	Maximum Allowable Connector to Board Dimension "C" to Maintain Minimum Contact Wipe of .015" [0.38mm]
FIG 6) QSH / QTH-RA	SEE TABLE 4	TABLE 4 "A" DIM + .003" [0.08mm]	SEE TABLE 4	TABLE 4 "C" DIM + .003" [0.08mm]

TABLE 7

Mated Pair	Fully Mated Board to Board Dimension "A" with Contact Wipe of .040" [1.02mm]	Maximum Allowable Board to Board Dimension "A" to Maintain Minimum Contact Wipe of .015" [0.38mm]	Fully Mated Connector to Board Dimension "C" with Contact Wipe of .040" [1.02mm]	Maximum Allowable Connector to Board Dimension "C" to Maintain Minimum Contact Wipe of .015" [0.38mm]
FIG 7) QTH / QSH-RA	SEE TABLE 5	TABLE 5 "A" DIM + .025" [0.64mm]	SEE TABLE 5	TABLE 5 "C" DIM + .025" [0.64mm]

PROPRIETARY NOTE

THIS DOCUMENT CONTAINS CONFIDENTIAL AND PROPRIETARY INFORMATION AND ALL DESIGN, MANUFACTURING, REPRODUCTION, USE, PATENT RIGHTS AND SALES RIGHTS ARE EXPRESSLY RESERVED BY SAMTEC, INC. THIS DOCUMENT SHALL NOT BE DISCLOSED, IN WHOLE OR PART, TO ANY UNAUTHORIZED PERSON OR ENTITY NOR REPRODUCED, TRANSFERRED OR INCORPORATED IN ANY OTHER PROJECT IN ANY MANNER WITHOUT THE EXPRESS WRITTEN CONSENT OF SAMTEC, INC.



520 PARK EAST BLVD, NEW ALBANY, IN 47150
 PHONE: 812-944-6733 FAX: 812-948-5047
 e-Mail info@SAMTEC.com code 55322