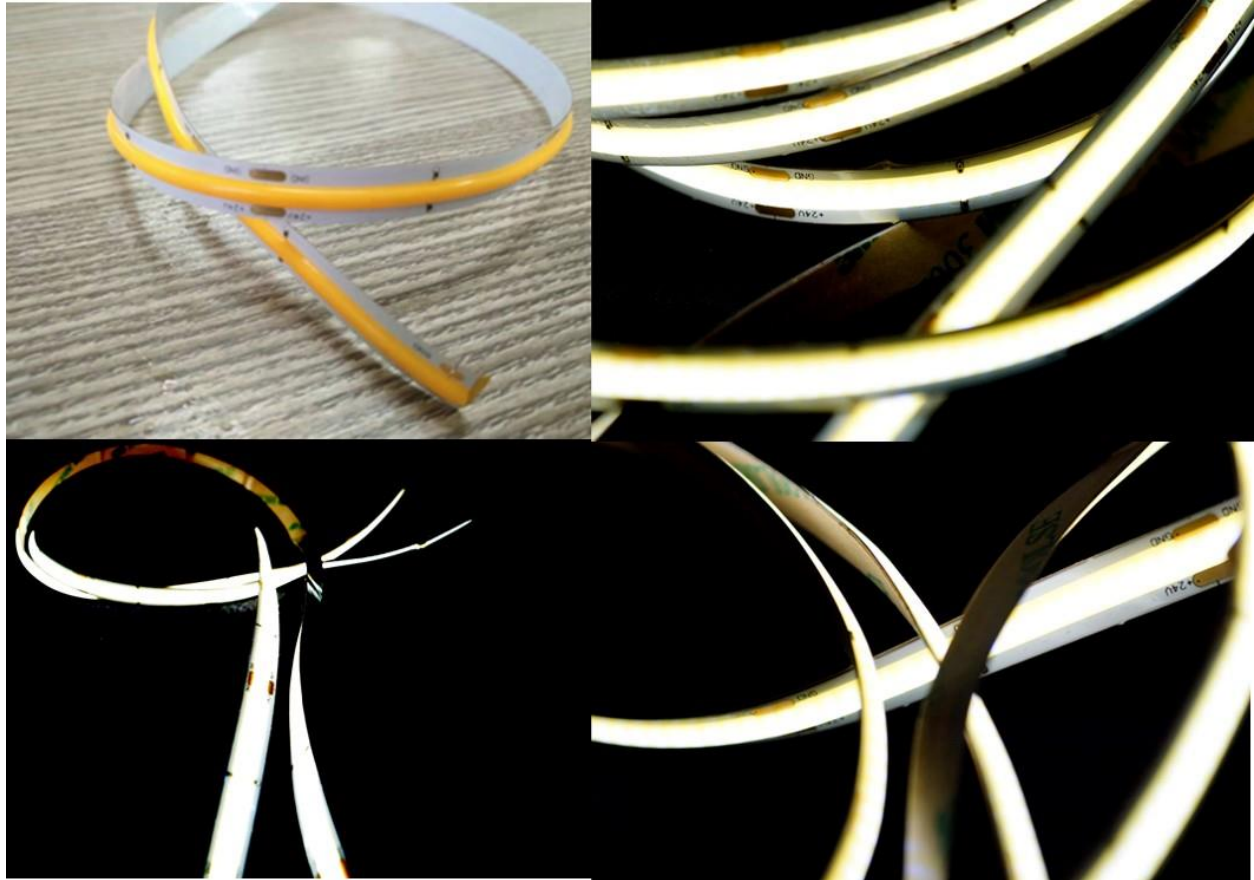


Flexible COB Light Strip

IP65, 20", 24VDC, single color series



Features:

- UL listed (UL2108)
- IP65 rating
- No hotspots
- High lumen output (up to 1200lm/m)
- Wide viewing angle (150°)
- Storage Temperature: -20°C~75°C
- Operating Temperature: -20°C~60°C
- Humidity tolerance: 40-70% RH

Application:

- Commercial building
- Residential building
- Entertainment lighting
- Hotels
- Signages

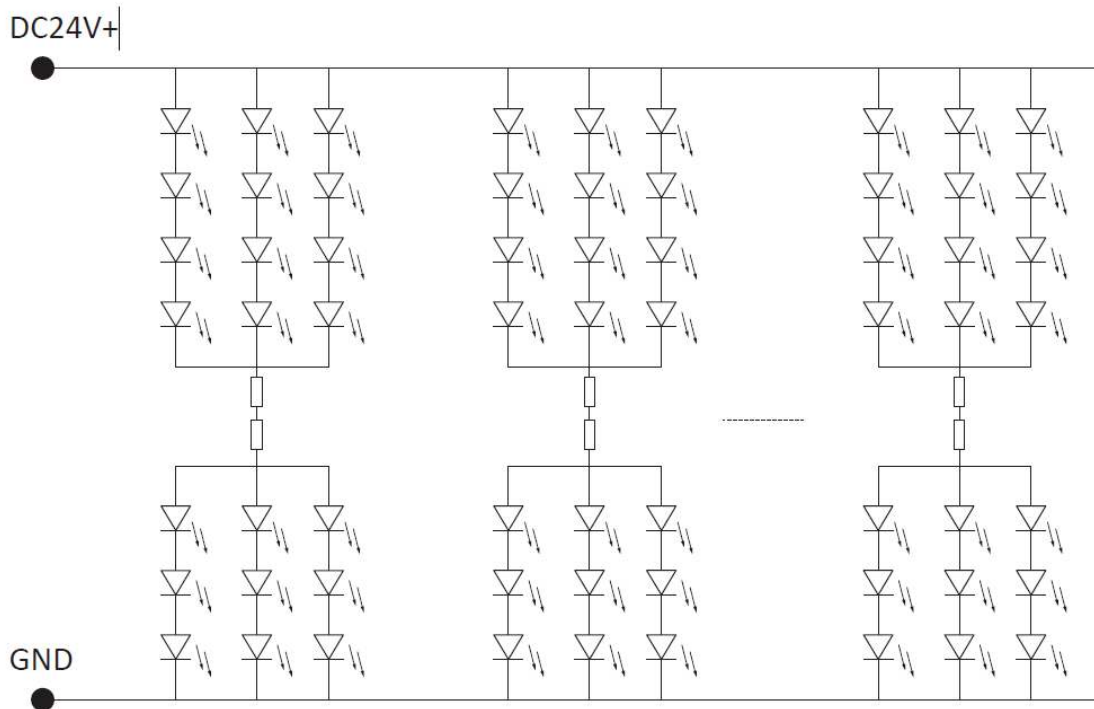
Product Performance Parameters:

P/N	CCT/nm	CRI	Lumen output (lm/pcs)	Efficacy (lm/W)	Working voltage 24(V)/I _F (A)	Rated Power (W/pcs)
AB-FO02427-02012-9A1	2700K	>90	447	70	24V/0.25A	6
AB-FO02430-02012-9A1	3000K	>90	470	76	24V/0.25A	6
AB-FO02440-02012-9A1	4000K	>90	536	87	24V/0.25A	6
AB-FO02465-02012-9A1	6500K	>90	550	90	24V/0.25A	6
AB-FO024GN-02012-XA1	525nm	n/a	600	100	24V/0.25A	6
AB-FO024AM-02012-XA1	590nm	n/a	335	54	24V/0.25A	6

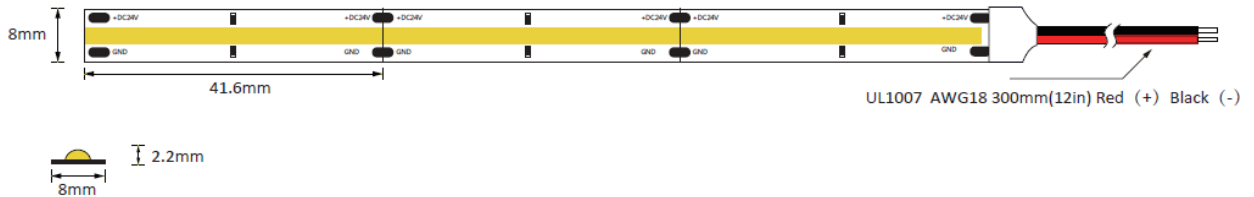
Notes:

1. Luminous flux ±10% is allowed in the floating.
2. Maximum length current attenuation 15%.
3. Photometric standards are based on CIE eye sensitivity curve diagram test.

Schematic Diagram:

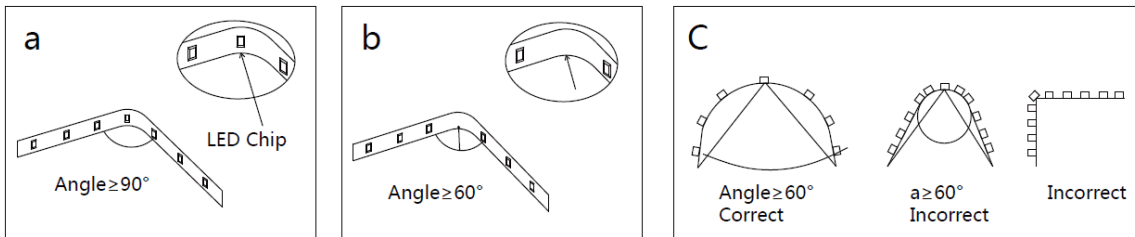


Product Size Chart:



1. Unit: mm (inch)
2. FPC Color: White
3. 3M 9454 Double-side tape attached at the back

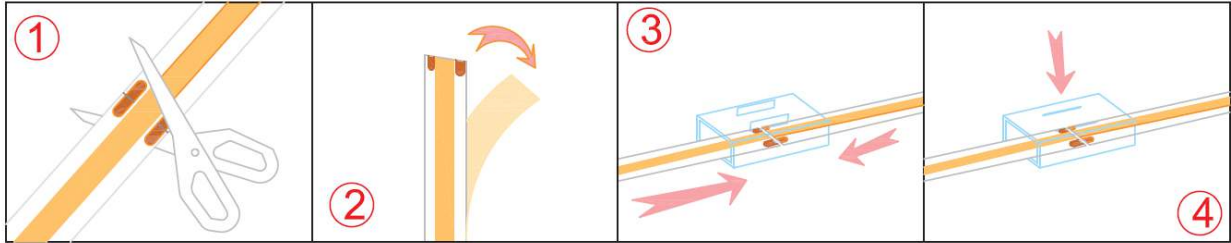
Installation Guide:



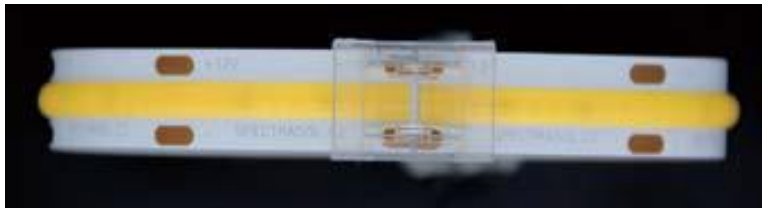
- a: use an angle greater or equal to 90 degrees when there is an LED chip on the corner while placing the strip in a concave position (Angle \geq 90degree)
- b: use an angle greater or equal to 60 degrees when there is an LED chip on the corner while placing the strip in a concave position (Angle \geq 60degree)
- c: use an angle greater or equal to 60 degrees when there is an LED chip on the corner while placing the strip in a concave position (Angle \geq 60degree) In the convex position the angle should not reach 90 degrees .See above diagram.

Cutting and Connecting Instruction:

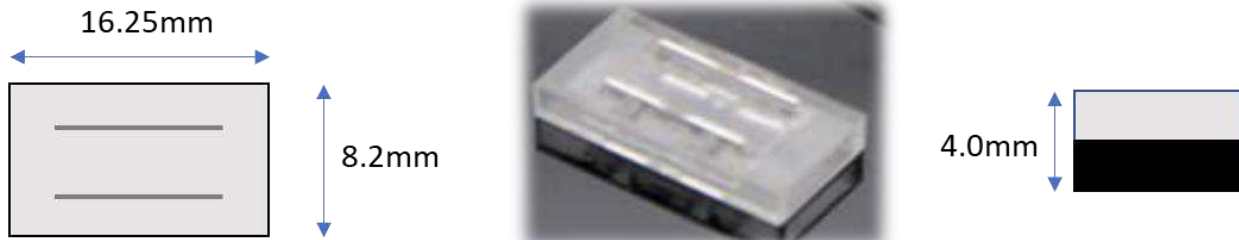
Please follow the below instruction if you want to elongate the COB light strip.



1. Field cut the light strip at everywhere with soldering pads.
2. Peel out the 3M adhesive tape
3. Put together the 2 light strips and the connector, AB-TSC-06-2
4. Make sure the connector fastens the lights



The dimension of the connector, AB-TSC-06-2:



Maximum Flexibility Precaution:

NOTE: DO NOT BEND TO A RADIUS OF LESS THAN 0.59 INCH

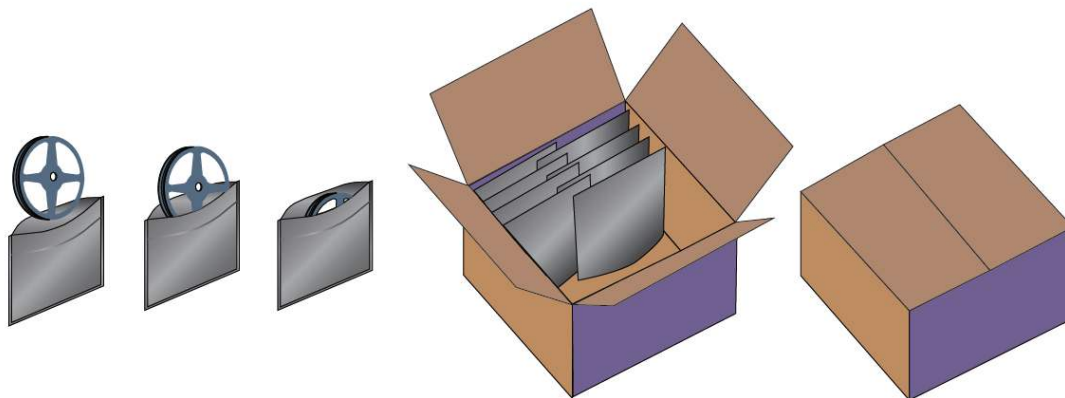
NOTE: SHARP BENDING ISN'T ALLOWABLE

NOTE: DO NOT AXIAL BEND TO THE HEIGHT OF MORE THAN 19.8mm WITHIN 0.78 INCH SEGMENT

NOTE: DO NOT HORIZONTAL BEND TO A RADIUS OF LESS THAN 18 INCH

NOTE: DO NOT TWIST MORE THAN 90° OVER THE LENGTH OF ONE 24v SEGMENT/ TWO 12V SEGMENTS (4" TOTAL LENGTH)

Product Packaging:



Unit length	Qty/ Box	Ret Weight/ Box	Gross Weight/ Box
20"	10	1.5kg (3.4bs)	2.2kg (5.2lbs)