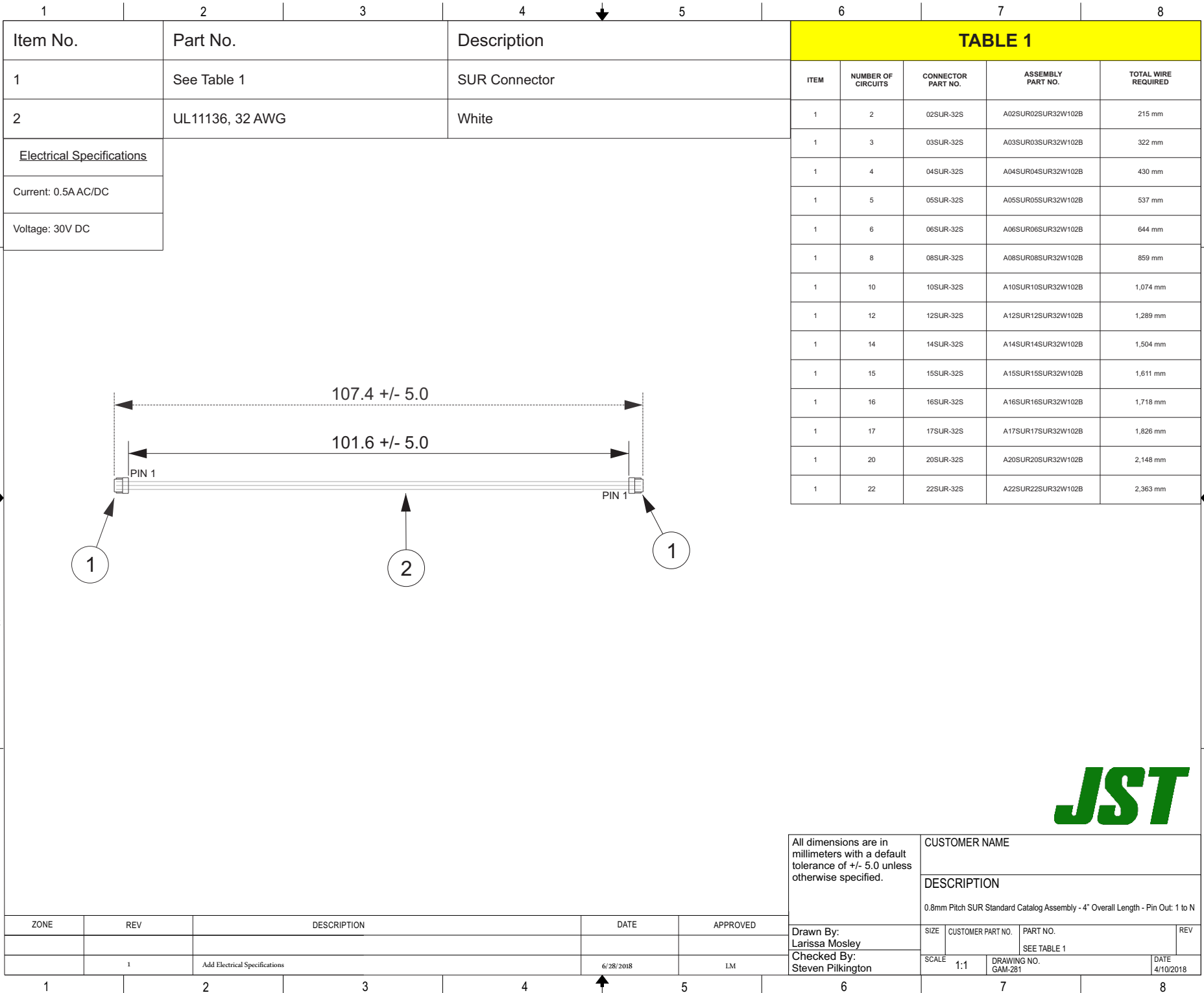


THIS DRAWING CONTAINS INFORMATION THAT IS PROPRIETARY TO J.S.T. AND SHALL NOT BE USED OR SHOWN WITHOUT WRITTEN PERMISSION.



|   |               |                        |           |      |
|---|---------------|------------------------|-----------|------|
| All dimensions are in millimeters with a default tolerance of +/- 5.0 unless otherwise specified. | CUSTOMER NAME |                        |           |      |
|   | DESCRIPTION   |                        |           |      |
| 0.8mm Pitch SUR Standard Catalog Assembly - 4" Overall Length - Pin Out: 1 to N                   |               |                        |           |      |
| Drawn By:<br>Larissa Mosley   | SIZE          | CUSTOMER PART NO.      | PART NO.  | REV  |
| Checked By:<br>Steven Pilkington  | SCALE         | SEE TABLE 1            |           | DATE |
|   | 1:1           | DRAWING NO.<br>GAM-281 | 4/10/2018 |      |

| ZONE | REV | DESCRIPTION                   | DATE      | APPROVED |
|------|-----|-------------------------------|-----------|----------|
|      | 1   | Add Electrical Specifications | 6/28/2018 | LM       |