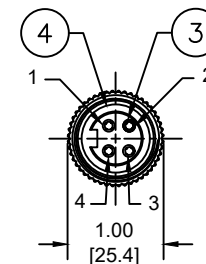
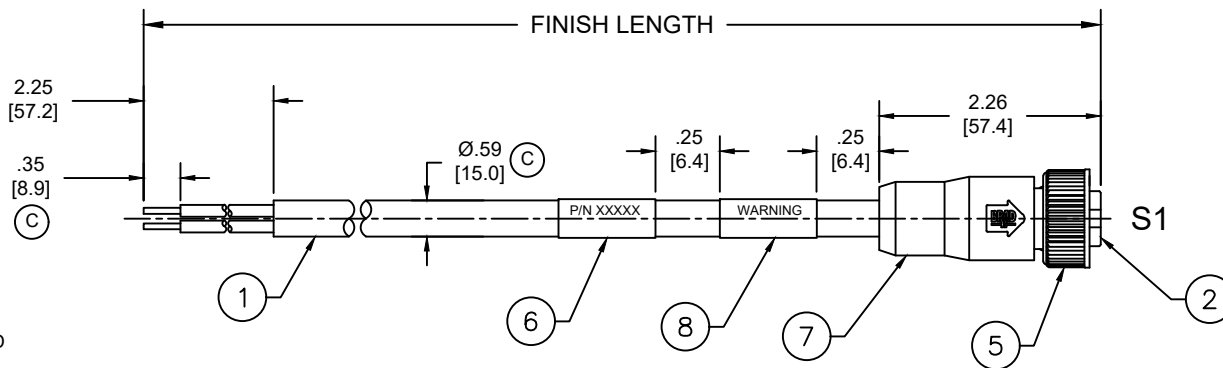
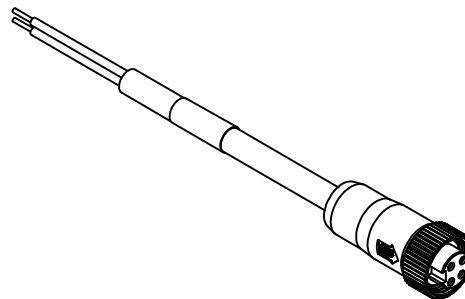


| MATERIAL NUMBER | ENGINEERING NUMBER | FINISHED LENGTH |
|-----------------|--------------------|-----------------|
| 1300610088      | 104000A46M010      | 1M [3FT 3 IN]   |
| 1300610007      | 104000A46M250      | 25M [82FT]      |
| 1300610105      | 104000A46M500      | 50M [164FT]     |

PART NUMBER LEGEND

104000A46M010

LENGTH:  
M005= 0.5 METER  
M010= 1 METER  
M100= 10 METER



FACE VIEW FEMALE

NOTES:

- MATERIAL: AS NOTED
- FINISH: AS NOTED
- ELECTRICAL:
  - VOLTAGE: 483V PER IEC60664
  - 600V PER UL2237
  - CURRENT: 15A
- TEMP RATING: -20°TO +105°C
- PROTECTION: IP67 (WHEN MATED)
- COUPLING THREAD: 7/8"-16UN
- UL LISTED FILE: E258922
- ALL DIMENSIONS ARE FOR REFERENCE UNLESS TOLERANCED OR NOTED OTHERWISE

S1

| COLOR        | PLACEMENT |
|--------------|-----------|
| BLACK        | 1         |
| WHITE        | 2         |
| RED          | 3         |
| GREEN/YELLOW | 4         |

A

| CABLE LENGTH TOLERANCES |                         |
|-------------------------|-------------------------|
| <.3M [1FT]              | +19mm-0 [+ .75in-0]     |
| .3 - .9M [1 - 3FT]      | +44.5mm-0 [+1.75in-0]   |
| .9 - 1.8M [3 - 6FT]     | +55.6mm-0 [+2.19in-0]   |
| 1.8 - 3.7M [6 - 12FT]   | +88.9mm-0 [+3.50in-0]   |
| 3.7 - 7.3M [12 - 24FT]  | +165.1mm-0 [+6.50in-0]  |
| 7.3-14.6M [24 - 48FT]   | +317.5mm-0 [+12.50in-0] |
| 14.6 - 30.5M [48-100FT] | +622.3mm-0 [+24.50in-0] |
| OVER 30M [100FT]        | +2% OF FINISHED LENGTH  |

WIRING DIAGRAM

| ITEM | DESCRIPTION    | MATERIAL     | FINISH           |
|------|----------------|--------------|------------------|
| 8    | WARNING LABEL  | VINYL        | ORANGE/BLACK     |
| 7    | OVERMOLD       | TPE          | GRAY             |
| 6    | WRAP LABEL     | VINYL        | YELLOW/BLACK     |
| 5    | COUPLING NUT   | ZINC ALLOY   | BLACK E-COAT     |
| 4    | FRICTION RING  | NYLON        | WHITE            |
| 3    | SOCKET CONTACT | COPPER ALLOY | GOLD OVER NICKEL |
| 2    | INSERT         | TPE          | BLACK            |
| 1    | #14/4 CABLE    | PVC JACKET   | GRAY             |

|  |   |                        |  |                   |
|--|---|------------------------|--|-------------------|
| FUNCTIONAL SYMBOLS<br>FA=0<br>FC=0<br>FE=0           | THIS DRAWING CONTAINS INFORMATION THAT IS PROPRIETARY TO MOLEX ELECTRONIC TECHNOLOGIES, LLC AND SHOULD NOT BE USED WITHOUT WRITTEN PERMISSION |                        | CURRENT REV DESC: ITEM 2 & 7 WERE PVC SLEEVE & SOCKET SHOWN AS ITEM-3. ADDED FRICTION RING, IEC VOLTAGE, CABLE DIA & TOL CHART. MODIFIED WIRE END STRIP, TEMP RATING AND PN TABLE. |                   |
|  | DIMENSION UNITS   | SCALE                  | EC NO: 698916  |                   |
|  | INCH/MM   | NTS                    | DRWN: ABENJAMINLW  | 2021/06/14        |
|  | GENERAL TOLERANCES (UNLESS SPECIFIED)   |                        | CHK'D: RSTONE  | 2022/03/09        |
| DIVISIONAL SYMBOLS                                   | 4 PLACES  | ±----                  | ±----  | APPR: BWOODMAN    |
|  | 3 PLACES  | ±----                  | ±----  | 2022/03/11        |
|  | 2 PLACES  | ±----                  | ±----  | INITIAL REVISION: |
|  | 1 PLACE   | ±----                  | ±----  | DRWN: ---         |
| 0 PLACES   | ±----   | ±----                  | APPR: JFMURPHY   | 2010/01/20        |
| ANGULAR TOL ± ---- °                                 |   | THIRD ANGLE PROJECTION |  |                   |
| DRAFT WHERE APPLICABLE MUST REMAIN WITHIN DIMENSIONS |   | DRAWING                | SERIES   | MATERIAL NUMBER   |
|  |   | A-SIZE                 | 130061   | SEE CHART         |

**molex**

BRAD POWER CORDSET, A-SIZE  
4-POLE, FEMALE, STRAIGHT, SINGLE KEY,  
#14 AWG

PRODUCT CUSTOMER DRAWING

|                 |          |          |          |
|-----------------|----------|----------|----------|
| DOCUMENT NUMBER | DOC TYPE | DOC PART | REVISION |
| SD-130061-012   | PSD      | 001      | C        |

|                 |    |              |            |          |
|-----------------|----|--------------|------------|----------|
| DOCUMENT STATUS | P1 | RELEASE DATE | 2022/03/11 | 14:29:45 |
|-----------------|----|--------------|------------|----------|