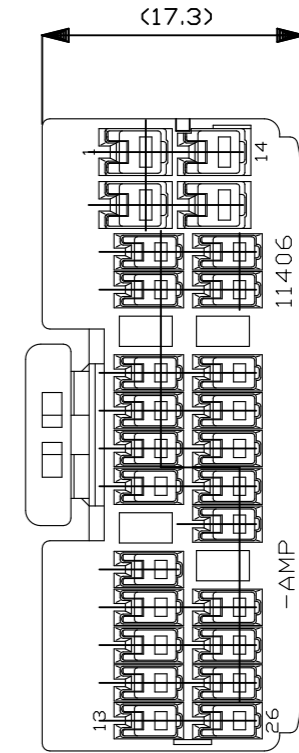
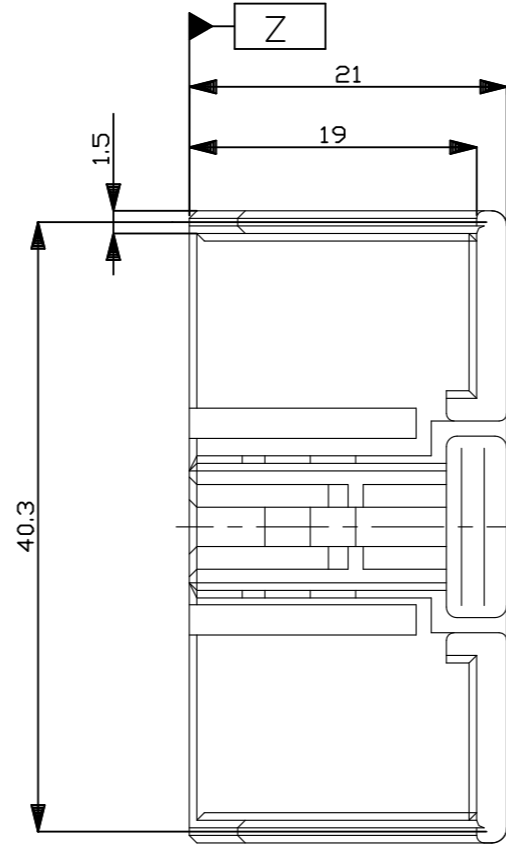
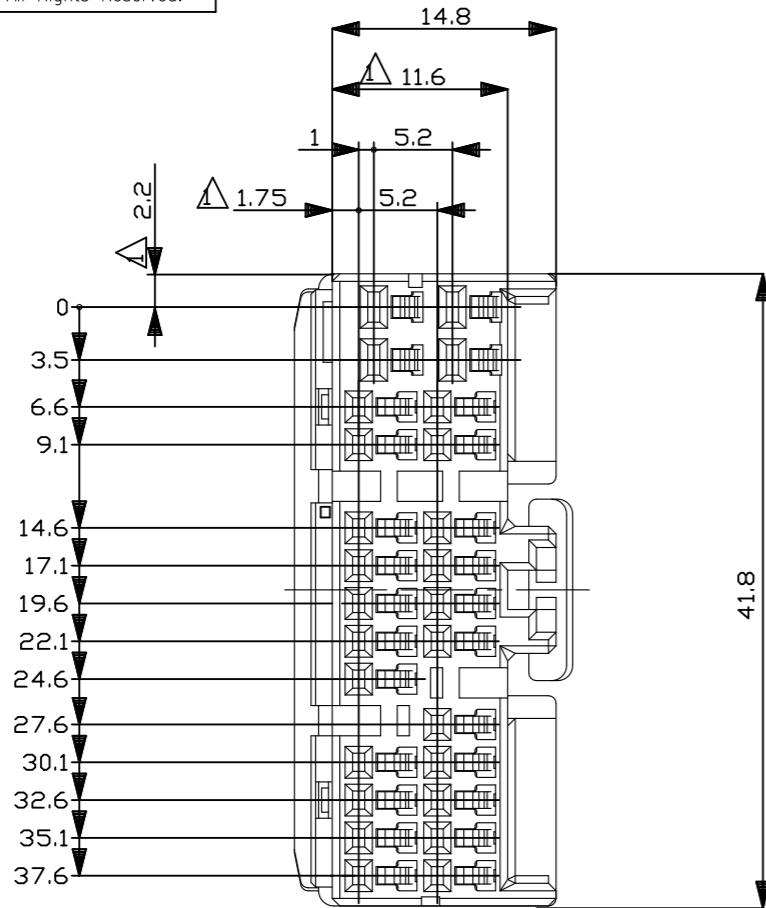


P	LTR	DESCRIPTION	DATE	DWN	APVD
	A1	REVISED PER ECR-23-165252	02FEB2023	RK	MT

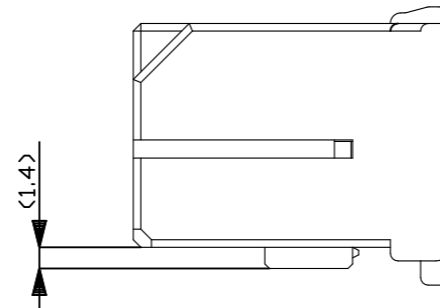


NOTES;

- △ MUST BE KEPT BETWEEN [Z] AND 2mm.
- THE MATING CAP HOUSING PART NUMBER;178209
- APPLIED CONTACT PART NUMBER .040:175265,175266
.070:175275,175276,175268,175269
- APPLICABLE PRODUCT SPEC;108-5342
- △ RETAINER COLOR.7ALL WHITE

注;

- △ [Z] 面より2mmの範囲で測定
- 嵌合相手ハウジング型番:178209
- 内装するリセプタクル型番:.040端子:175265,175266
.070端子:175275,175276,175268,175269
- 適用製品規格番号:108-5342
- △ リテーナは全て白色



OBSOLETE	色(COLOR)	型番(P/N)
	淡灰(LIGHT GRAY)	6-917850-6
	橙(BRANGE)	917850-8
	黒(BLACK)	917850-2
	白(WHITE)	917850-1
	△ 色(COLOR)	型番(P/N)

一般公差
(GENERAL TOLERANCE)

10以下: ±0.2
10~30: ±0.25
30~100: ±0.3
角 度 ±3°

THIS DRAWING IS A CONTROLLED DOCUMENT.	
DIMENSIONS: mm	TOLERANCES UNLESS OTHERWISE SPECIFIED:
	0 PLC ± -
	1 PLC ± -
	2 PLC ± -
	3 PLC ± -
MATERIAL PBT	4 PLC ± -
	ANGLES ± -
	FINISH SEE TABLE

DWN T.SHINOHARA 5/22'95	TE Connectivity		.040/.070 HYBRID I/O CONN. MK-II 26Pos. PLUG HOUSING(LOW PRO FILE)		
CHK D.MATSUURA 5/22'95					
APVD A.TOMITA 5/22'95					
PRODUCT SPEC					
APPLICATION SPEC	NAME	SIZE	CAGE CODE	DRAWING NO	RESTRICTED TO
				A3 00779 C-917850	
WEIGHT	CUSTOMER DRAWING		SCALE	SHEET	REV
-			2:1	1 OF 1	A1