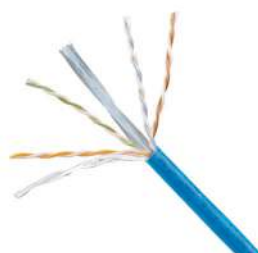


TX6™ Category 6 U/UTP Copper Cable - Europe

specifications

Category 6 cable shall meet the IEC 61156-5 and ANSI/TIA-568-C.2 Category 6 component standards. The conductors shall be 24 AWG insulated with polyethylene. The copper conductors shall be twisted in pairs, separated by a cross divider and covered by a LSFRZH jacket.



technical information

Electrical performance:	Certified channel performance in a 4-connector configuration up to 100 meters and exceeds ISO 11801 Class E and ANSI/TIA-568-C.2 Category 6 standards at swept frequencies up to 250MHz Certified component performance up to 100 meters and exceeds the component requirements of the IEC 61156-5 and ANSI/TIA-568-C.2 Category 6 standards at swept frequencies up to 250MHz
Conductors/insulators:	24 AWG solid copper insulated with polyolefin
Insulation diameter:	0.91 - 1.01mm (0.036 - 0.040 inch.)
Flame rating:	EN 50575: Euroclass B2ca-s1a-d1-a1
PoE compliance	Meets IEEE 802.3af, IEEE 802.3at and 802.3bt for PoE applications
Installation tension:	110N (25 lbf)
Temperature rating:	-20°C to 75°C (-4°F to 167°F) during operation 0°C to 50°C (32°F to 122°F) during installation
Cable jacket:	LSFRZH (Low Smoke Fire Retardant Zero Halogen)
Cable diameter:	6.1mm (0.240 inch.) nominal
Cable weight:	PUW6C04**-CE: 13kg/305m (28 lbs./1000 ft.) PUW6C04**-CED: 21kg/500m (46 lbs./1640 ft.)
Packaging:	PUW6C04**-CE: 305m (1000 ft.) easy payout carton PUW6C04**-CED: 500m (1640 ft.) on reel Package tested to ISTA Procedure 1A

key features and benefits

Third party tested	Cable has been tested as part of the TX6™ Category 6 U/UTP Copper Cabling System by an independent laboratory and complies with the electrical channel requirements of the following standard: ISO 11801 Class E and ANSI/TIA-568-C.2 Category 6 standard
Easy payout carton or reel	Ensures proper performance and provides quick installation
Descending length cable markings	Easy identification of remaining cable reduces installation and cable scrap
Cross divider	Separates twisted pairs for robust cable performance
Tested beyond the Standards	Cable has been characterized to 350MHz, 100MHz above the standard

applications

TX6™ U/UTP Copper Cable is a component of the Panduit TX6™ U/UTP Copper Cabling System. This end-to-end system provides Gigabit Ethernet performance with usable bandwidth beyond 250MHz. With certified performance to the ANSI/TIA-568-C.2 Category 6 and ISO 11801 Class E standards, this system will support the following applications:

- Ethernet 10BASE-T
- 100BASE-T (Fast Ethernet)
- 1000BASE-T (Gigabit Ethernet)

TX6™ U/UTP Copper Cabling System

TX6™ U/UTP Copper Cable

LSFRZH: PUW6C04**-CE
PUW6C04**-CED

Mini-Com® TX6™ PLUS U/UTP Jack Module

Jack module: CJ688TG***

TX6™ PLUS U/UTP Patch Cords – CM

Foot lengths: UTPSP3^Y
Meter lengths: UTPSP1^^MY

TX6™ PLUS U/UTP Patch Cords – LSZH

Foot lengths: UTPSPL3^Y
Meter lengths: UTPSPL^^1MY

DP6™ PLUS Punchdown Patch Panels

Angled, 24-port, 1RU: DPA24688TGY
Angled, 48-port, 2RU: DPA48688TGY
Flat, 24-port, 1RU: DP24688TGY
Flat, 48-port, 2RU: DP48688TGY

Mini-Com® Flush Mount Modular Patch Panels

Angled, 24-port, 1RU: CPPA24FMWBLY
Angled, 48-port, 2RU: CPPA48FMWBLY
Flat, 24-port, 1RU: CPP24FMWBLY
Flat, 48-port, 2RU: CPP48FMWBLY

Termination and Cable Prep Tools

Termination tools: EGJT-1 or TGSJT
Conductor snipping tool: CWST
Conductor stripping tool: CFAST

**To designate cable color, add suffix WH (White). For additional cable colors, contact Customer Service.

***For jack color, replace suffix with: IW (Off White), EI (Electrical Ivory), IG (International Gray), AW (Arctic White), WH (White), BL (Black), BU (Blue), RD (Red), YL (Yellow), GR (Green), or VL (Violet). Add -24 to end of part number for 24 pack convenience package.

^For standard foot lengths other than 3 feet, replace the 3 in the part number with 1 to 50ft. (1 foot increments) and 55 to 200ft. (5 foot increments). For standard colors other than Off White, add suffix BU (Blue), RD (Red), YL (Yellow), or GR (Green) before the Y at the end of the part number. For example, the part number for a blue, CM, Category 6, 5-foot patch cord is UTPSP5BUY.

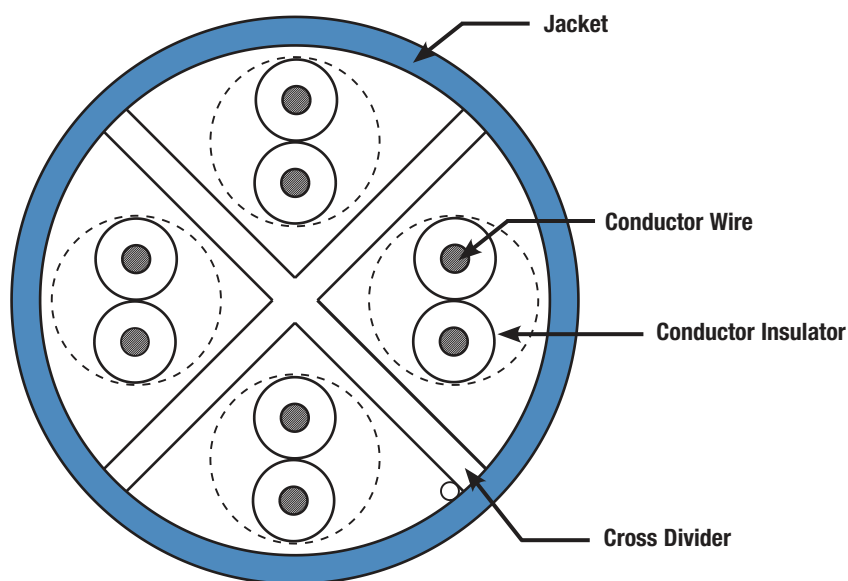
^^For standard meter lengths other than 1 meter, replace the 1 in the part number with 0.5 - 10m (0.5 meter increments), 1 - 20m (1 meter increments) and 25 - 60m (5 meter increments). For standard colors other than Off White, add suffix BU (Blue), RD (Red), YL (Yellow), or GR (Green) before Y at the end of the part number. For example, the part number for a blue, CM, Category 6, 5-meter patch cord is UTPSP5MBUY.

TX6™ Category 6 U/UTP Copper Cable - Europe

additional specifications

Mechanical Test	
Ultimate Breaking Strength	>400 N (90 lbf)
Minimum Bend Radius	4 x cable diameter
Electrical Test	
Nominal Velocity of Propagation (NVP)	65%
Operating Voltage, Maximum	80V

cable construction



WORLDWIDE SUBSIDIARIES AND SALES OFFICES

PANDUIT US/CANADA
Phone: 800.777.3300

PANDUIT EUROPE LTD.
London, UK
cs-emea@panduit.com
Phone: 44.20.8601.7200

PANDUIT SINGAPORE PTE. LTD.
Republic of Singapore
cs-ap@panduit.com
Phone: 65.6305.7575

PANDUIT JAPAN
Tokyo, Japan
cs-japan@panduit.com
Phone: 81.3.6863.6000

PANDUIT LATIN AMERICA
Guadalajara, Mexico
cs-la@panduit.com
Phone: 52.33.3777.6000

PANDUIT AUSTRALIA PTY. LTD.
Victoria, Australia
cs-aus@panduit.com
Phone: 61.3.9794.9020

For a copy of Panduit product warranties, log on to www.panduit.com/warranty

For more information

Visit us at www.panduit.com

Contact Customer Service by email: cs@panduit.com
or by phone: 800.777.3300

PANDUIT™

©2018 Panduit Corp.
ALL RIGHTS RESERVED.
COSP420--WW-UKE
7/2018