



Our Spur Gear Motors are an inline solution providing ample torque output at various speeds. They are best for intermittent duty operation. With endless performance combinations, we have a fully tailored gear motor solution for you.



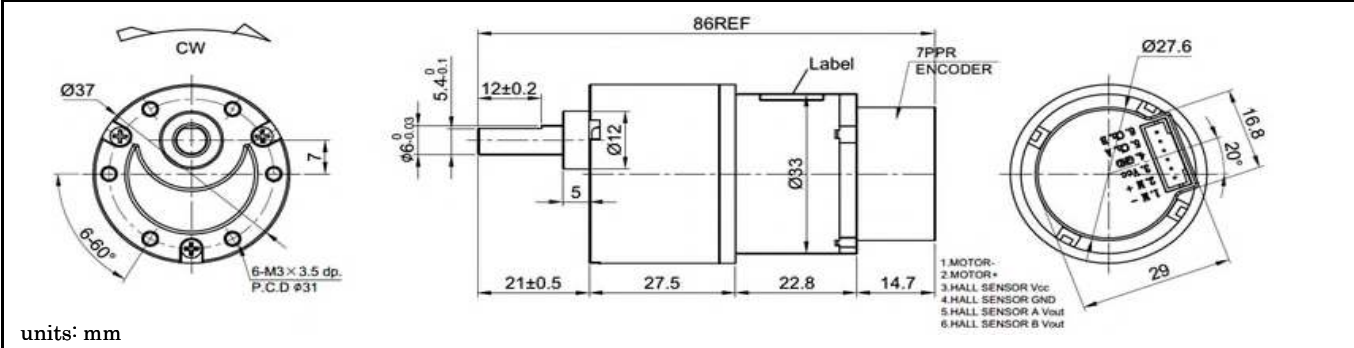
Contact Us for alternative solutions!

Specifications

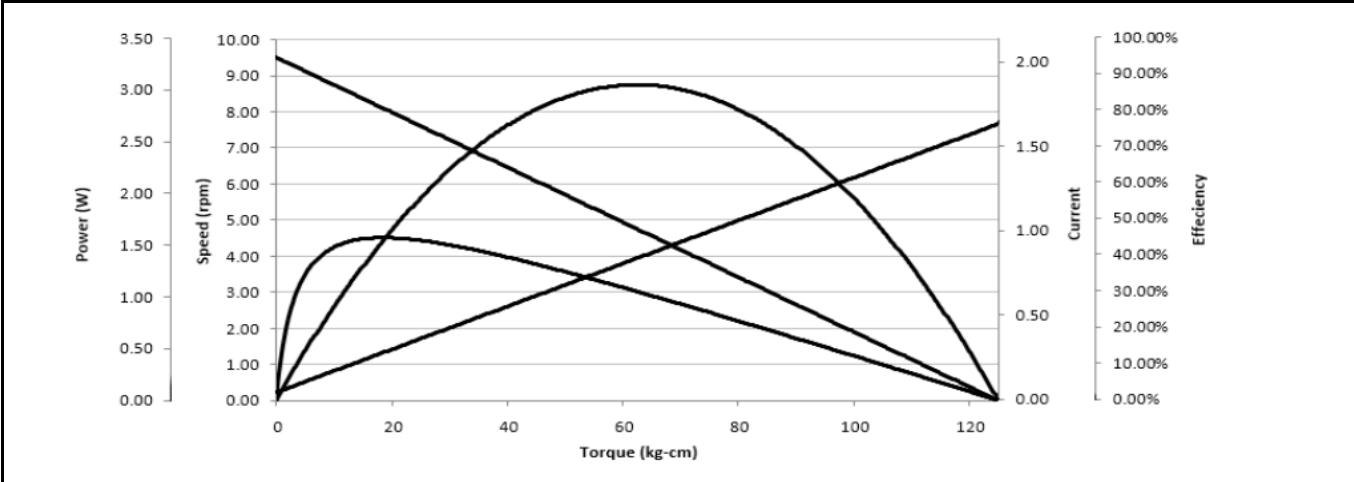
<b>Gearhead Type:</b>	Spur	<b>No-Load Speed:</b>	9.5 rpm (+/- 10%)
<b>Motor Type:</b>	Carbon - Brushed	<b>No-Load Current:</b>	<100 mA
<b>Rated Voltage:</b>	12V DC	<b>Stall Torque:</b>	* 125 kg.cm
<b>Rated Speed:</b>	8 rpm	<b>Max. Power:</b>	3 W
<b>Rated Torque:</b>	18 kg.cm	<b>Reduction Ratio:</b>	610:1
<b>Rated Current:</b>	290 mA	<b>Termination Style:</b>	Connector (see next page)

\* Gearbox limitations are set at 45 kg.cm, operating past this torque limit may create premature failure.

Dimensions



Performance Curve





This gear motor is equipped with one of our magnetic encoders to provide exceptional feedback and control.



Specifications			
Type:	Magnetic	Min. Operating Temp:	-20°C / -4°F
Channels:	2	Max. Operating Temp:	70°C / 158°F
Pulses per Revolution:	7 PPR	Max. Humidity:	85% (RH)
Supply Voltage:	3.5V - 12Vcc	Number of Wires:	6
Supply Current:	20mA (max.)	Connector Type:	JST PH2.0-6P

Dimensions / Connections

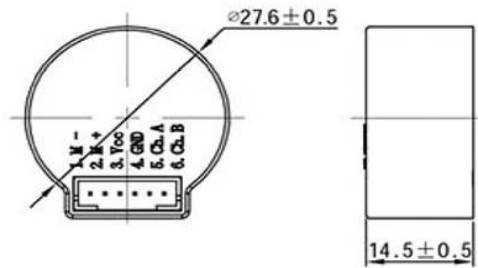


PH2.0-6P

Two Channel Encoder  
Connections:

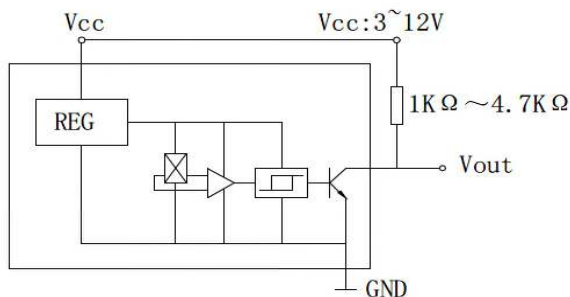
- 1.MOTOR -
- 2.MOTOR +
- 3.HALL SENSOR Vcc
- 4.HALL SENSOR GND
- 5.HALL SENSOR A Vout
- 6.HALL SENSOR B Vout

\*Each turn output 7PPR



Electrical Characteristics

Output Circuit



Output Wave

