

LOW PROFILE SHIELDED SMD CHIP POWER INDUCTOR



6.0 x 6.0 x 1.2mm

ASPI-0612FS



RoHS/RoHS II Compliant

FEATURES:

- Small size and low profile: 1.2mm
- Small DCR and high rated current
- High reliability to mechanical strength
- Magnetically shielded by magnetic powder molding
- Suitable for RoHS reflow profile

APPLICATIONS:

- DC/DC converter for LCD display of notebook PC
- Portable communication equipment
- Digital cameras

ELECTRICAL SPECIFICATIONS:

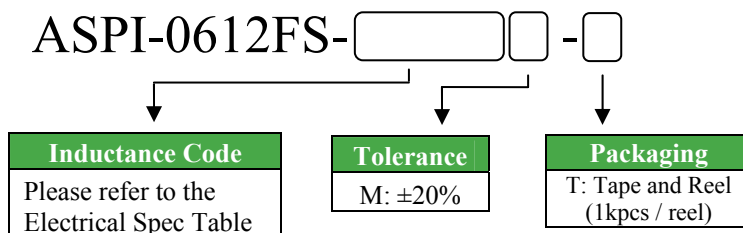
Abracon P/N:	ASPI-0612FS Series
Operating Temperature & Humidity :	-40°C to +105°C (Including self temperature rise)
Storage Temperature & Humidity:	-5°C to +40°C and RH 70% (Max.) in Tape & Reel

Part Number ASPI-0612FS- Inductance Code	Inductance	Inductance Tolerance	DCR Typ	DCR Max	Saturation Current	Temperature Rise Current
Units	μH	%	mΩ	mΩ	A	A
Symbol	L	M	DCR Typ	DCR Max	Isat	Irms
ASPI-0612FS-2R2	2.2	M	65	78	2.40	1.80
ASPI-0612FS-2R5	2.5	M	90	117	2.10	1.80
ASPI-0612FS-3R3	3.3	M	105	137	1.80	1.70
ASPI-0612FS-4R7	4.7	M	125	163	1.60	1.55
ASPI-0612FS-5R3	5.3	M	125	163	1.50	1.55
ASPI-0612FS-6R8	6.8	M	165	215	1.30	1.35
ASPI-0612FS-100	10	M	200	260	1.00	1.20
ASPI-0612FS-150	15	M	295	384	0.80	0.80
ASPI-0612FS-220	22	M	775	930	0.76	0.65
ASPI-0612FS-330	33	M	580	754	0.59	0.55
ASPI-0612FS-470	47	M	965	1255	0.52	0.46
ASPI-0612FS-680	68	M	1160	1508	0.44	0.41
ASPI-0612FS-101	100	M	1670	2171	0.35	0.32

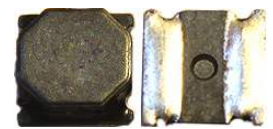
Test Conditions

1. Isat : Based on inductance change ($\Delta L/L_0$: -30%)
2. Irms : Based on temperature rise (ΔT : 40°C)
3. Test Freq: 100KHz, 1Vrms

OPTIONS AND PART IDENTIFICATION



LOW PROFILE SHIELDED SMD CHIP POWER INDUCTOR

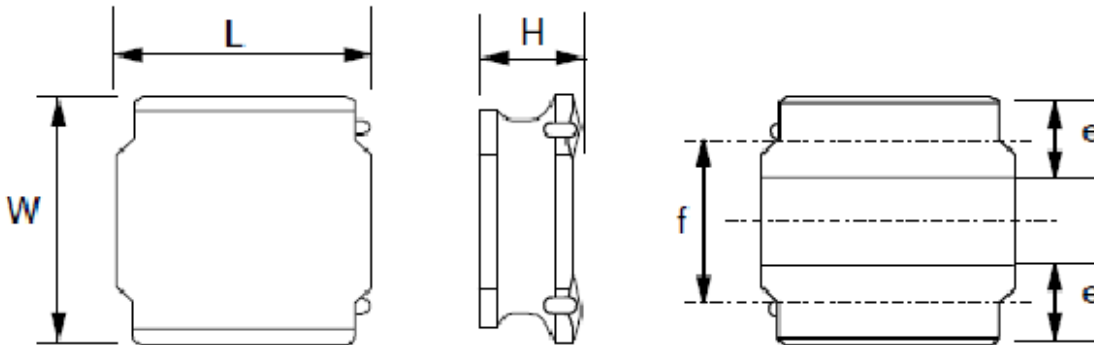


6.0 x 6.0 x 1.2mm

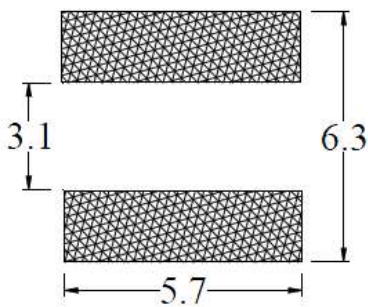
ASPI-0612FS

 RoHS/RoHS II Compliant

OUTLINE DRAWING:



Recommended Land Pattern



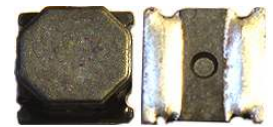
L	6.0±0.2
W	6.0±0.2
H	1.2 Max
e	1.35±0.2
F	4.0±0.2

Dimension: mm

Materials

Part Name	Material
Core	Ferrite
Terminal	Ni/Cu/Ag alloy with Sn
Wire	H class enameled copper wire
Coating	Magnetic epoxy resin

LOW PROFILE SHIELDED SMD CHIP POWER INDUCTOR

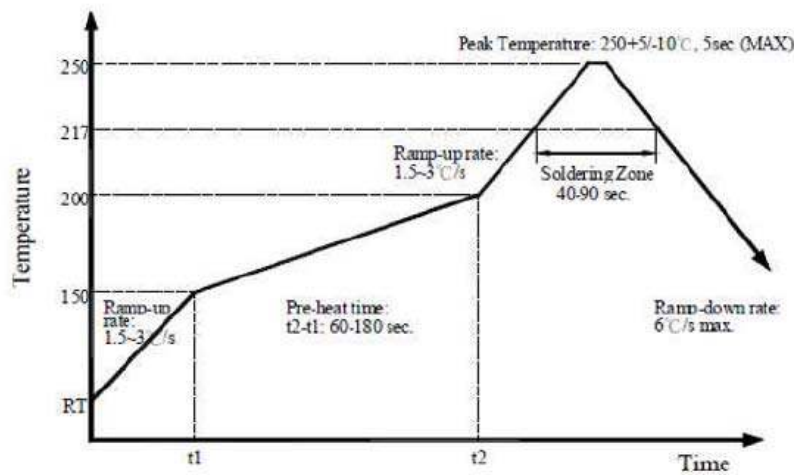


6.0 x 6.0 x 1.2mm

ASPI-0612FS

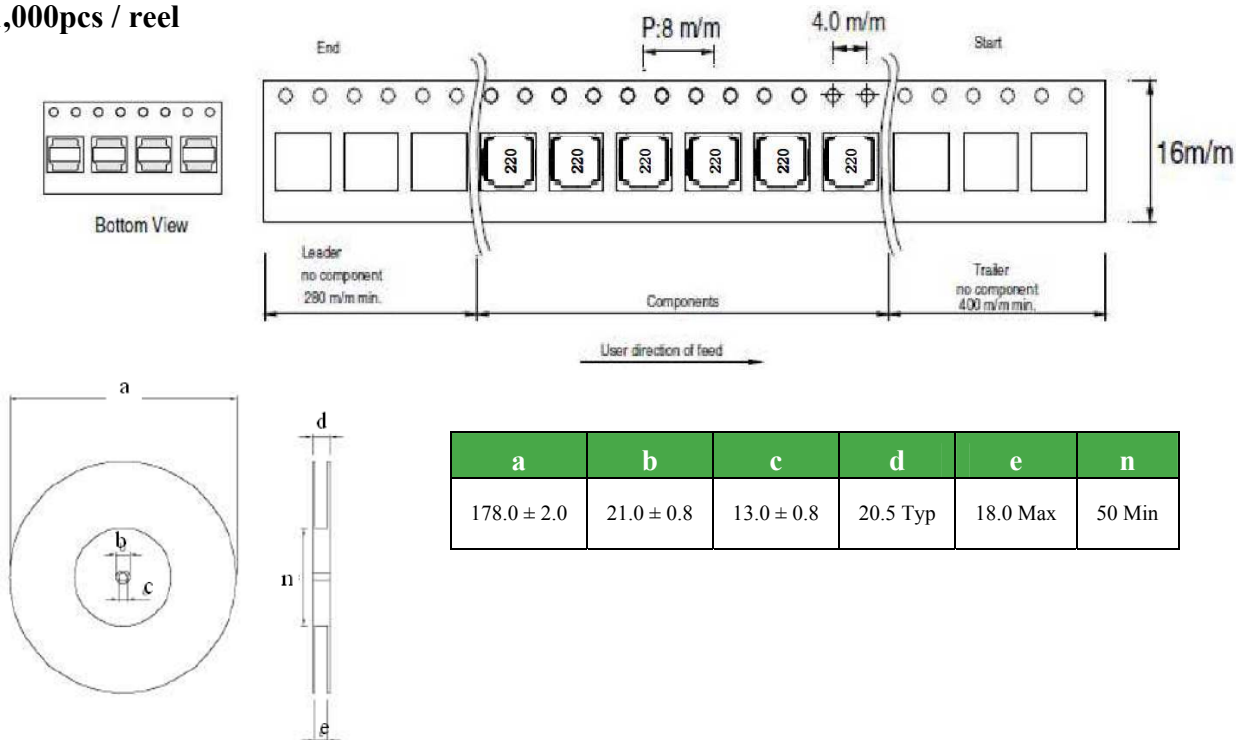
Pb RoHS/RoHS II Compliant

REFLOW PROFILE:



TAPE & REEL:

T: 1,000pcs / reel



Storage Conditions

Even under ideal storage conditions, solderability of products electrodes may decrease as time passes. For this reason, product should be used with 6 months from the time of delivery. In case of storage over 6 months, solderability shall be checked before actual usage.

Dimension: mm

ATTENTION Abracon Corporation's products are COTS – Commercial-Off-The-Shelf products; suitable for Commercial, Industrial and, where designated, Automotive Applications. Abracon's products are not specifically designed for Military, Aviation, Aerospace, Life-dependant Medical applications or any application requiring high reliability where component failure could result in loss of life and/or property. For applications requiring high reliability and/or presenting an extreme operating environment, written consent and authorization from Abracon Corporation is required. Please contact Abracon Corporation for more information.

ABRACON IS
ISO9001:2008
CERTIFIED



Visit www.abracon.com for Terms & Conditions of Sale **Revised: 04.10.13**
30332 Esperanza, Rancho Santa Margarita, California 92688
tel 949-546-8000| fax 949-546-8001| www.abracon.com