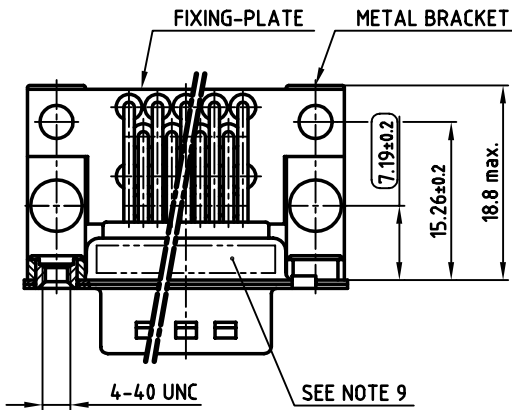
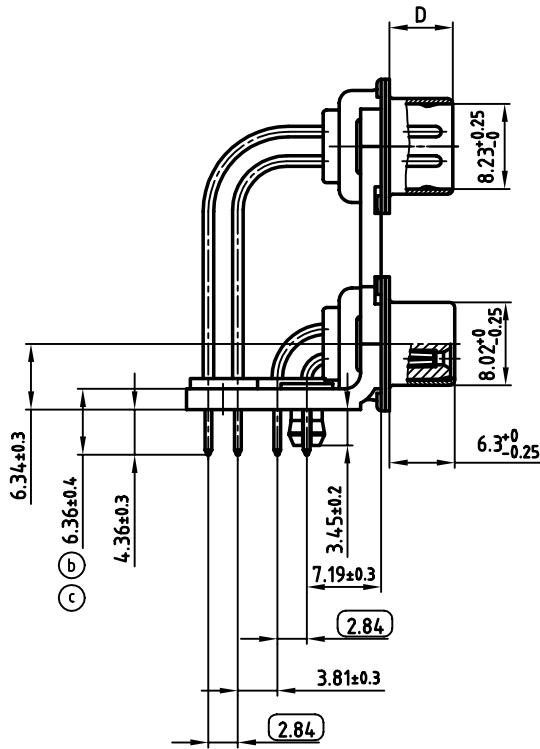
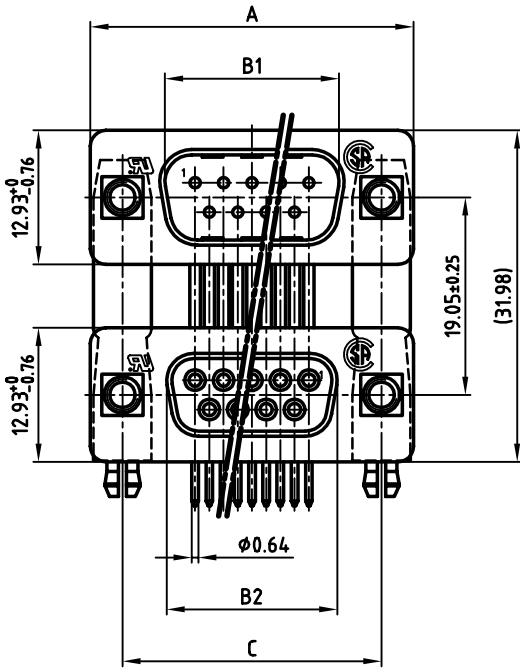


used for: D-SUB Dual Port

POS.	A _{-0.76}	B1 ^{+0.25}	B2 _{-0.25}	C	D _{-0.3}
2x 9	31.19	16.79	16.46	25.00 ^{+0.12} _{-0.13}	6.12
2x15	39.52	25.12	24.79	33.30 ^{+0.15} _{-0.1}	6.12
2x25	53.42	38.84	38.50	47.04 ^{+0.13}	5.99
2x37	69.70	55.30	54.96	63.50 ^{+0.13}	5.99

PLATING	2 x 9pos.	2 x 15pos.	2 x 25pos.	2 x 37pos.
8µ" HARD GOLD OVER min. 50µ" NICKEL	163A19529X	163A19539X	163A19549X	163A19559X
30µ" HARD GOLD OVER min. 50µ" NICKEL	163C19529X	163C19539X	163C19549X	163C19559X

(b)



NOTES:

- METALSHELLS: STEEL; min. 320µ" TIN
- INSULATORS: PBT GF UL 94 V-0, BLACK
- CONTACTS: COPPER ALLOY
- PLATING: SEE TABLE
- METAL BRACKET: STEEL; min. 320µ" TIN over 80µ" NICKEL
- THREADED INSERT: COPPER ALLOY; min. 200µ" TIN over 80µ" NICKEL
- FIXING-PLATE: PBT GF UL 94 V-0, BLACK
- P.C.B. HOLE DRILLINGS ON SHEET 2 + 3
- MAXIMUM TORQUE VALUE FOR THREAD: 6" LBS
- CONNECTOR IS PART MARKED: PART-NO. CONEC Y/WW
- 2.84 = CRITICAL DIMENSION

Directive 2002/95/EC
"RoHS"
Compliant

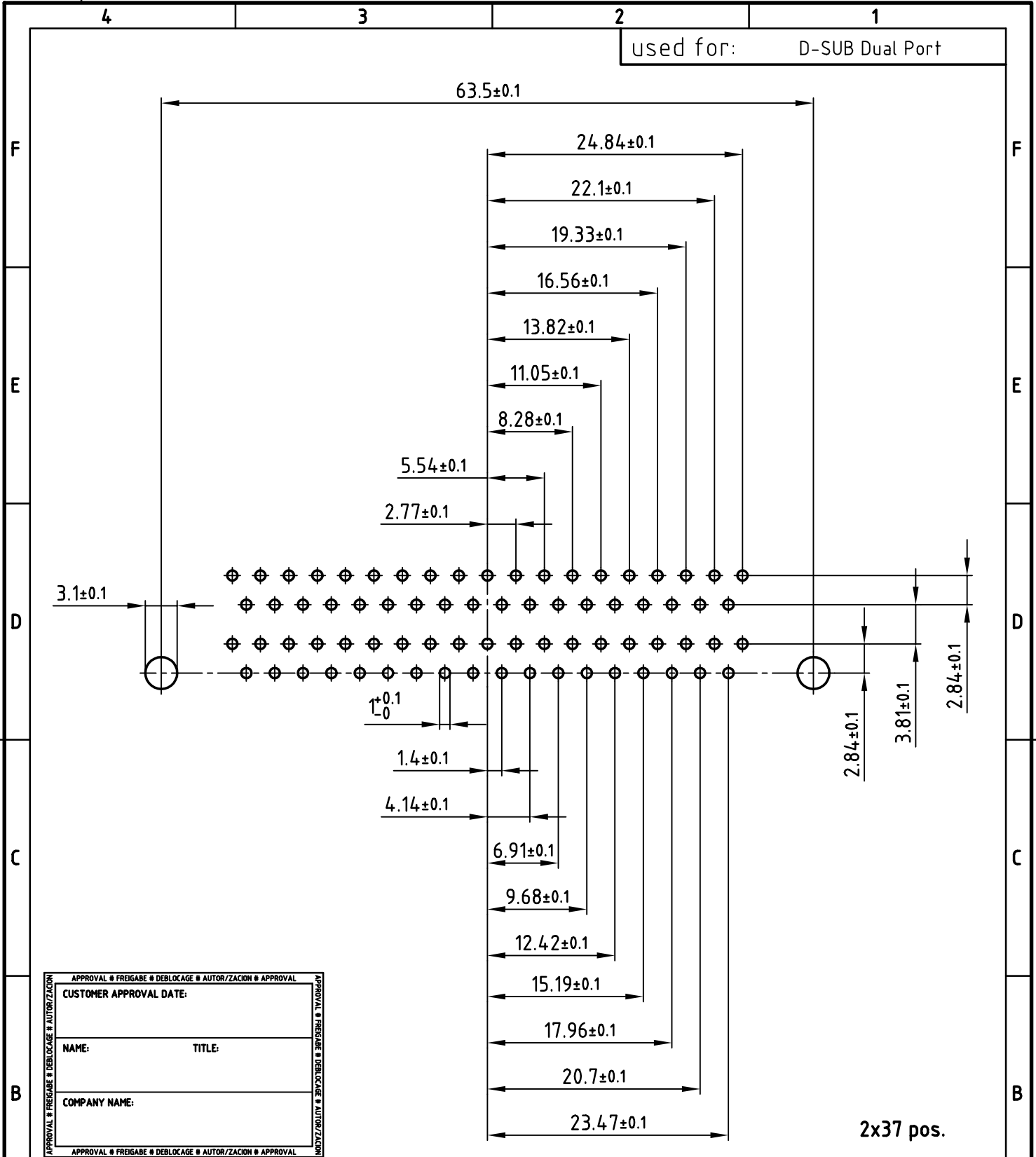
APPROVAL # FREIGABE # DEBLOCAGE # AUTORIZACION # APPROVAL	
CUSTOMER APPROVAL DATE:	
NAME:	TITLE:
COMPANY NAME:	
APPROVAL # FREIGABE # DEBLOCAGE # AUTORIZACION # APPROVAL	

THIS DRAWING MAY NOT BE COPIED OR REPRODUCED IN ANY WAY, AND MAY NOT BE PASSED ON TO A THIRD PARTY, WITHOUT WRITTEN PERMISSION. OWNERSHIP AND COPYRIGHT OF CONEC GmbH DO NOT ALTER CAD DRAWING BY HAND

rev.	description	date	name
1 x c	Ä 1919	09.01.2004	Lehmen
3 x b	Ä 1905	19.12.2003	Lehmen

tolerance		dim. in mm
2000	date	
drawn	31.01.	name
appd.	31.01.	Mickenbecker
norm	DIN 41652	
d-old		

scale:	2:1	
material:	SEE NOTES	
title:	DUAL PORT 19.05mm MALE / FEMALE 2x9pos. - 2x37pos. with threaded insert and clip	
dwg no:	AutoCAD 2000	DIN-A
	16K11MFA	3
part no:	SEE TABLE	
	sh:1/3	



APPROVAL # FREIGABE # DEBLOCAGE # AUTORIZACION # APPROVAL	
CUSTOMER APPROVAL DATE:	
NAME:	TITLE:
COMPANY NAME:	
APPROVAL # FREIGABE # DEBLOCAGE # AUTORIZACION # APPROVAL	

THIS DRAWING MAY NOT BE COPIED OR REPRODUCED IN ANY WAY, AND MAY NOT BE PASSED ON TO A THIRD PARTY WITHOUT WRITTEN PERMISSION.
 OWNERSHIP AND COPYRIGHT OF CONEC GmbH
 DO NOT ALTER CAD DRAWING BY HAND

tolerance		dim. in mm	
2000	date	name	
drawn	31.01.	Barcinski	
appd.	31.01.	Mickenbecker	
norm	DIN 41652		
d-old			
1 x b	Ä 1905	19.12.2003	Lehmen
rev.	description	date	name

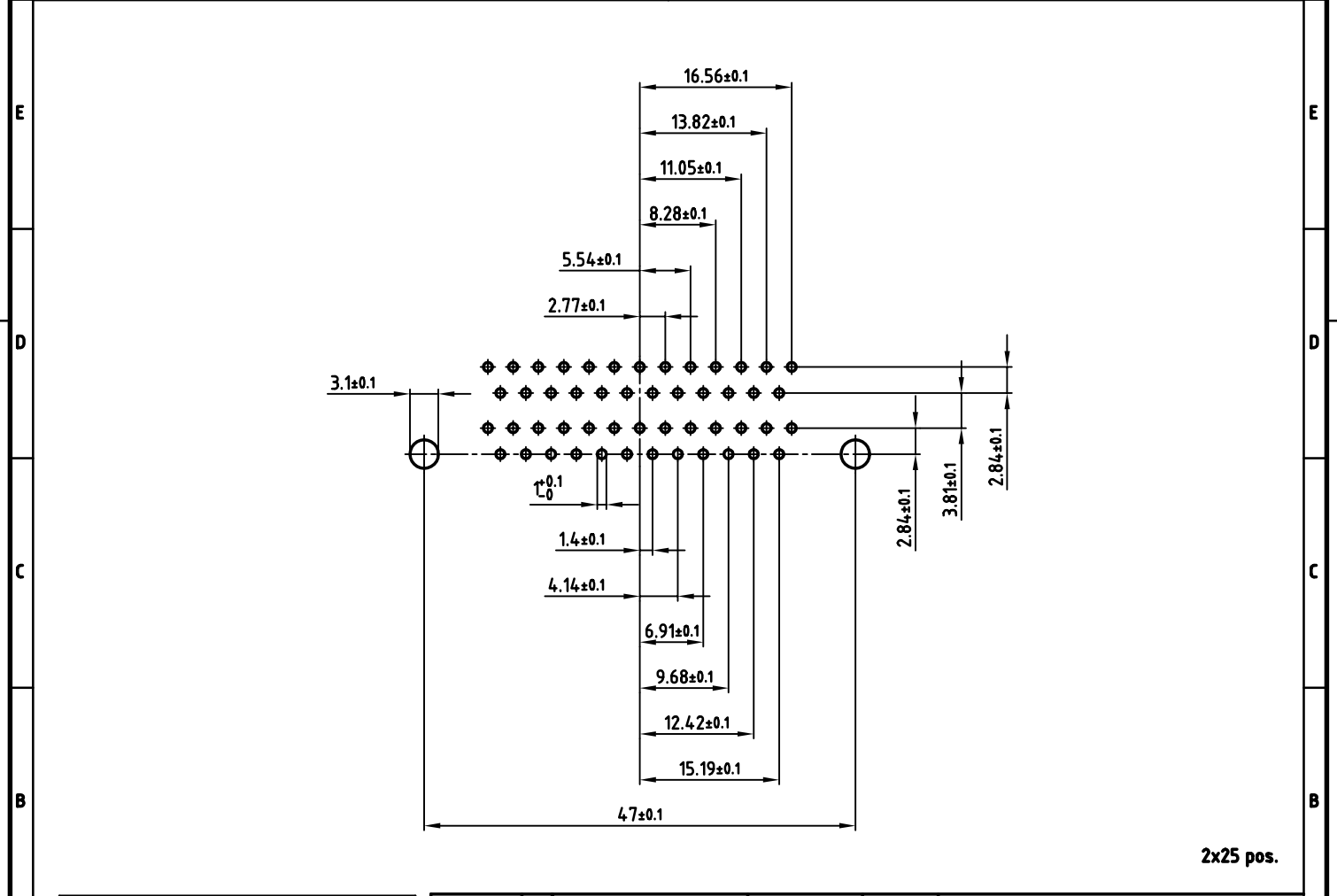
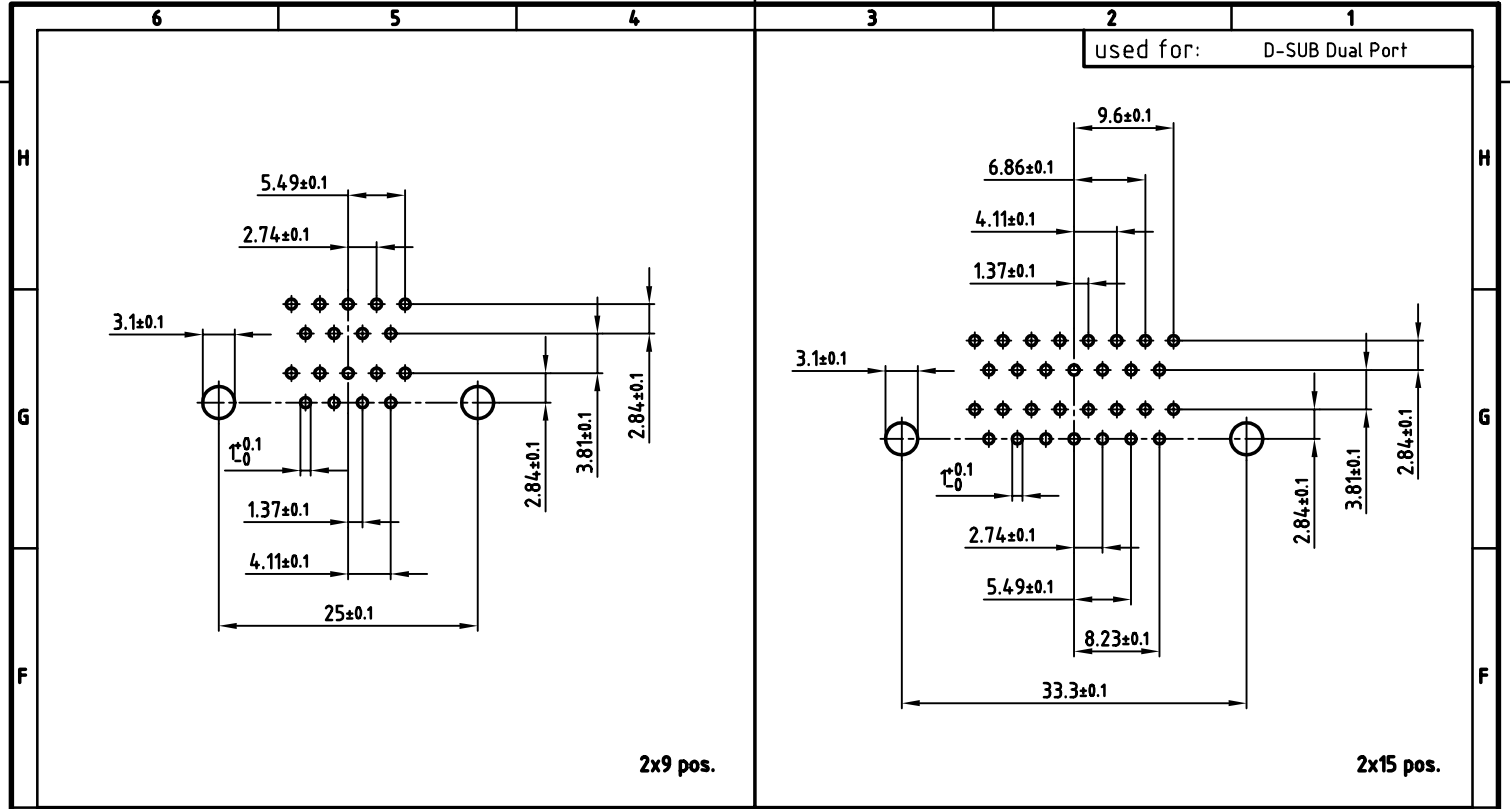


scale:	2:1	
material:	SEE SHEET 1	
title:	(b) P.C.B. HOLE DRILLINGS DUAL PORT 19.05mm MALE / FEMALE with threaded insert and clip	
dwg no:	AutoCAD 2000	DIN-A
	16K11MFA	4
		sh:3/3
part no:	SEE SHEET 1	

A
B
C
D
E
F

A
B
C
D
E
F

4 3 2 1



APPROVAL # FREIGABE # DEBLOCAGE # AUTORIZACION # APPROVAL

CUSTOMER APPROVAL DATE:

NAME: TITLE:

COMPANY NAME:

APPROVAL # FREIGABE # DEBLOCAGE # AUTORIZACION # APPROVAL

THIS DRAWING MAY NOT BE COPIED OR REPRODUCED IN ANY WAY, AND MAY NOT BE PASSED ON TO A THIRD PARTY, WITHOUT WRITTEN PERMISSION. OWNERSHIP AND COPYRIGHT OF CONEC GmbH DO NOT ALTER CAD DRAWING BY HAND

rev.	description	date	name
1 x b	Ä 1905	19.12.2003	Lehmen

tolerance	\varnothing	dim. in mm
2000	date	name
drawn	31.01.	Barcinski
appd.	31.01.	Mickenbecker
norm	DIN 41652	
d-old		

scale: 2:1

material: SEE SHEET 1

title: **P.C.B. HOLE DRILLINGS**
DUAL PORT 19.05mm MALE / FEMALE
with threaded insert and clip

dwg no: AutoCAD 2000 DIN-A
16K11MFA 3 sh:2/3

part no: SEE SHEET 1