

4

3

2

1

THIS DRAWING IS UNPUBLISHED. RELEASED FOR PUBLICATION  
 © COPYRIGHT - By - ALL RIGHTS RESERVED.

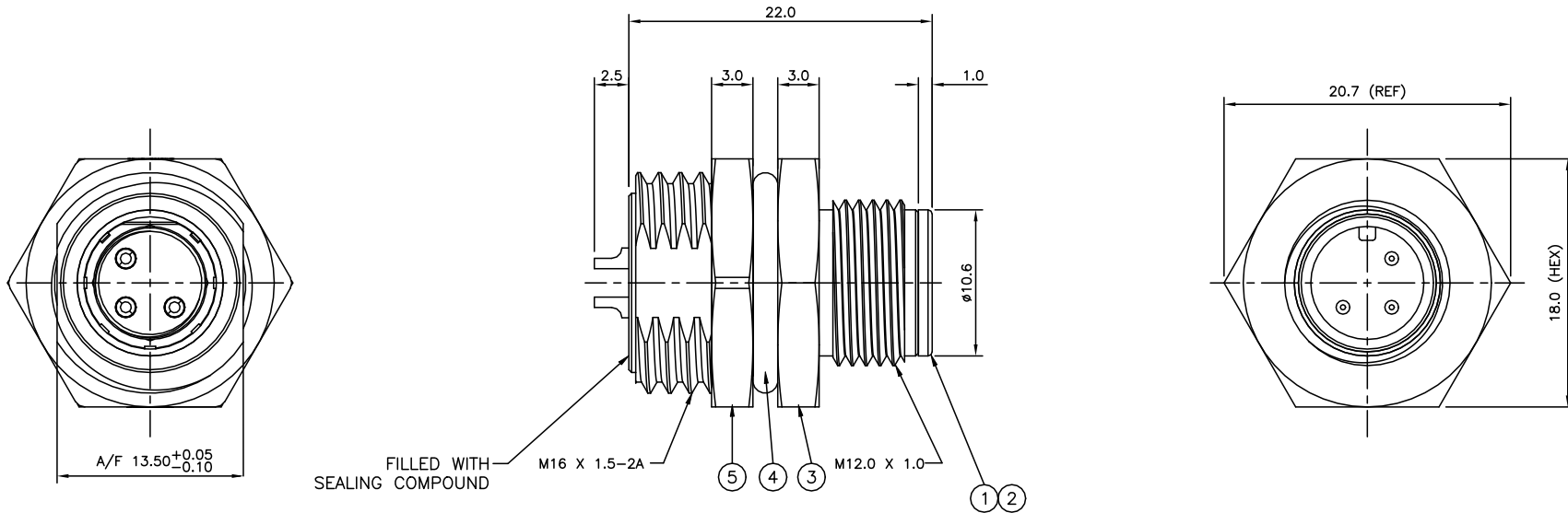
NOTES:

- ELECTRICAL DATA: CONTACT RESISTANCE: 10 mOhm MAX  
 INSULATION RESISTANCE: 100 MOhm MIN at 500VDC  
 CURRENT RATING: 5 AMPS (FOR 3, 4 AND 5 POSITIONS) AND 2 AMPS (FOR 8 POSITION ONLY)  
 BREAKDOWN VOLTAGE: 500 VAC MIN PER MINUTE
- ENVIRONMENTAL: OPERATING TEMPERATURE: -25°C TO +90°C  
 SEALING REQUIREMENTS: IP67
- PACKAGING: 107-3334
- FOR TECHNICAL DATA REFER TO YOUR LOCAL TE CONNECTIVITY SALES OFFICE.
- ALL DIMENSIONS ARE NOMINAL FOR REFERENCE ONLY UNLESS OTHERWISE STATED.

REVISIONS

P	LTR	DESCRIPTION	DATE	DWN	APVD
	C2	ALLOWABLE WIRE SIZES ADDED IN TABLE	07JUL2015	TJ	NG
	D	ECR-20-006194	27FEB2022	BP	CW

ITEM	DESCRIPTION	MATERIAL	FINISH/COLOUR	QUANTITY / ITEM			
				-1	-2	-3	-4
1	CONNECTOR HOUSING	GF NYLON	BLACK	1	1	1	1
2	PIN CONTACT	BRASS	0.15µm GOLD OVER NICKEL	3	4	5	8
3	CONNECTOR BODY	ZINC DIE CAST	2.5µm NICKEL PLATED	1	1	1	1
4	'O' RING	EPDM	BLACK	1	1	1	1
5	SCREW NUT	ZINC DIE CAST	2.5µm NICKEL PLATED	1	1	1	1



ALLOWABLE WIRE SIZE	DESCRIPTION	NO. OF POS	PART NUMBER
24AWG	M12 METAL MALE PANEL MOUNT CONNECTOR, SOLDER, STRAIGHT, REAR (HEXAGONAL) MOUNTING	8	1838893-4
22AWG	M12 METAL MALE PANEL MOUNT CONNECTOR, SOLDER, STRAIGHT, REAR (HEXAGONAL) MOUNTING	5	1838893-3
22AWG	M12 METAL MALE PANEL MOUNT CONNECTOR, SOLDER, STRAIGHT, REAR (HEXAGONAL) MOUNTING	4	1838893-2
22AWG	M12 METAL MALE PANEL MOUNT CONNECTOR, SOLDER, STRAIGHT, REAR (HEXAGONAL) MOUNTING	3	1838893-1

THIS DRAWING IS A CONTROLLED DOCUMENT.

DWN A. Morey 05MAR07	TE Connectivity		
CHK F. Wheeler-King 08MAR07	NAME M12 METAL MALE PANEL MOUNT CONN, SOLDER, ST, REAR MOUNTING		
APVD F. Wheeler-King 08MAR07	PRODUCT SPEC 108-3641		
MATERIAL -		SIZE A3	CAGE CODE 00779
DIMENSIONS: mm 0 PLC ±- 1 PLC ±- 2 PLC ±- 3 PLC ±- 4 PLC ±- ANGLES ±-		DRAWING NO C=1838893	RESTRICTED TO -
TOLERANCES UNLESS OTHERWISE SPECIFIED: FINISH -		APPLICATION SPEC -	WEIGHT -
MATERIAL -		CUSTOMER DRAWING	SCALE NTS
SHEET 1 of 2		REV D	SHEET 1 of 2

4

3

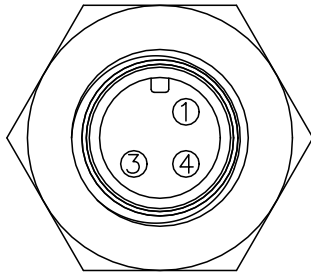
2

1

THIS DRAWING IS UNPUBLISHED.		RELEASED FOR PUBLICATION		REVISIONS					
© COPYRIGHT - By -		ALL RIGHTS RESERVED.		P	LTR	DESCRIPTION	DATE	DWN	APVD
				-	-	SEE SHEET 1	-	-	-

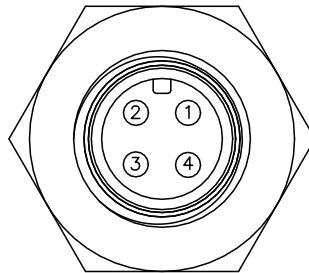
1838893-1

PIN ASSIGNMENTS  
FRONT VIEW



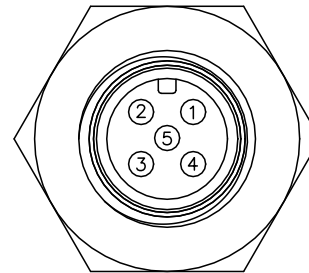
1838893-2

PIN ASSIGNMENTS  
FRONT VIEW



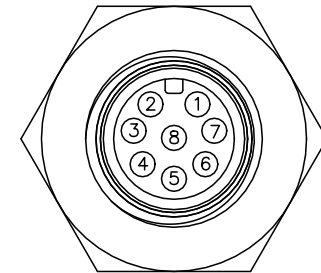
1838893-3

PIN ASSIGNMENTS  
FRONT VIEW

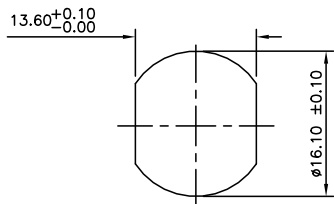


1838893-4

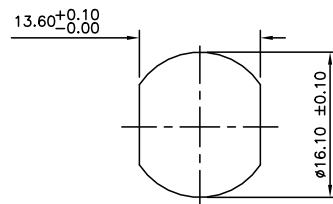
PIN ASSIGNMENTS  
FRONT VIEW



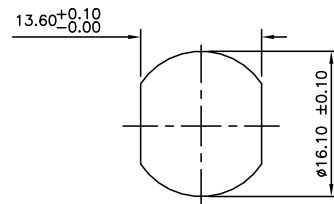
RECOMMENDED PANEL CUT-OUT  
(MAX PANEL THICKNESS 4.5mm)



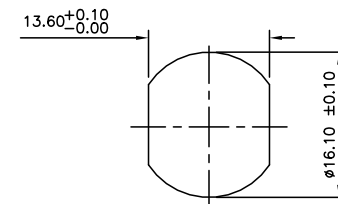
RECOMMENDED PANEL CUT-OUT  
(MAX PANEL THICKNESS 4.5mm)



RECOMMENDED PANEL CUT-OUT  
(MAX PANEL THICKNESS 4.5mm)



RECOMMENDED PANEL CUT-OUT  
(MAX PANEL THICKNESS 4.5mm)



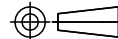
THIS DRAWING IS A CONTROLLED DOCUMENT.

DWN	A. Morey	05MAR07
CHK	F. Wheeler-King	08MAR07
APVD	F. Wheeler-King	08MAR07
PRODUCT SPEC	108-3641	
APPLICATION SPEC	-	
WEIGHT	-	



NAME  
M12 METAL MALE PANEL MOUNT CONN,  
SOLDER, ST, REAR MOUNTING

DIMENSIONS: mm



TOLERANCES UNLESS OTHERWISE SPECIFIED:	± -
0 PLC	± -
1 PLC	± -
2 PLC	± -
3 PLC	± -
4 PLC	± -
ANGLES	± -
FINISH	-

MATERIAL: -

SIZE	A3	CAGE CODE	00779	DRAWING NO	C=1838893	RESTRICTED TO	-
------	----	-----------	-------	------------	-----------	---------------	---

CUSTOMER DRAWING SCALE NTS SHEET 2 of 2 REV D