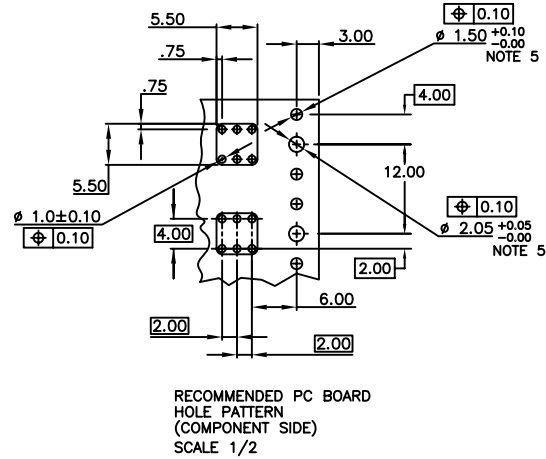
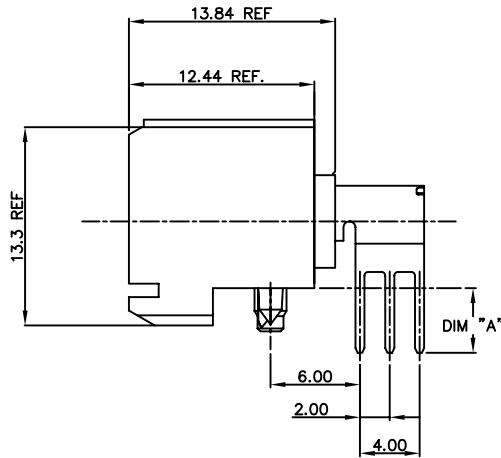
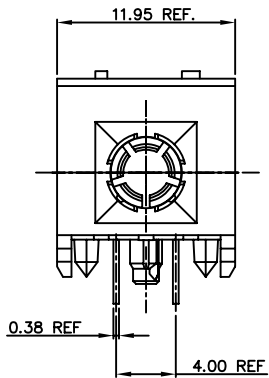
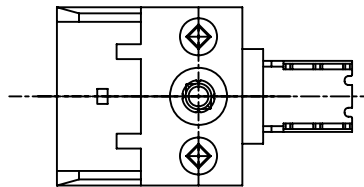


PRODUCT NO.	P.C.B. THICKNESS	DIM "A"
84601-001	3.2	4.3
84601-002	2.4	3.5
84601-003	1.6	2.7
84601-001LF	3.2	4.3
84601-002LF	2.4	3.5
84601-003LF	1.6	2.7



NOTES:

- BODY MATERIAL: LCP, 30% GLASS-FILLED, FLAME RETARDENT, ACC, UL94-V0
- TERMINAL MATERIAL: BeCu
- PLATING SOLDER TAILS: 2.5 μ m SnPb
84601-00Y IS SnPb
84601-00YLF IS Sn (LEAD FREE)
- PLATING CONTACT AREA: 0.80 μ m Au OVER 1.3 μ m Ni.
- INDICATED HOLES ARE UNPLATED
- PRODUCT MARKETING: PART NUMBER & BATCH I.D.
- THE PRODUCTS WHERE THE PART NUMBER ENDS IN LF MEET THE EUROPEAN UNION DIRECTIVES AND OTHER COUNTRY REGULATIONS AS DESCRIBED IN GS-22-008.
- ALL PRODUCTS WILL WITHSTAND EXPOSURE TO 260°C FOR 60 SECONDS IN A CONVECTION, INFRA-RED OR VAPOUR PHASE REFLOW OVEN.



mat'l. code				surface		tolerance		projection		product family	
SEE NOTES				ASME Y14.5		ASME Y14.5		MM		METRAL (tm)	
ltr	ec'n no	dr	date	angles	fil	rad	xxxB	MM		title	
A	v80795	MDF	4/30/98				X=3	MM		POWER CONNECTOR ASS'Y	
B	v01598	JWS	7/12/00				XXXB	MM		W/METRAL HSG. P/N 73478	
C	v06-0141	JRV	3/20/06	0° ±2'			XXX±051	scale 1:1		dwg no	
D	v06-0622	JRV	2006-06-26	dr	M. FETROW		4/30/98	FCI		sheet 1 of 1 size	
				engr	C. PENDLETON		4/30/98			84601 A4	
				chr	C. PENDLETON		4/30/98			type	
				appd	C. PENDLETON		4/30/98			CUSTOMER Drawing	
sheet	revision	D									
index	sheet	1									