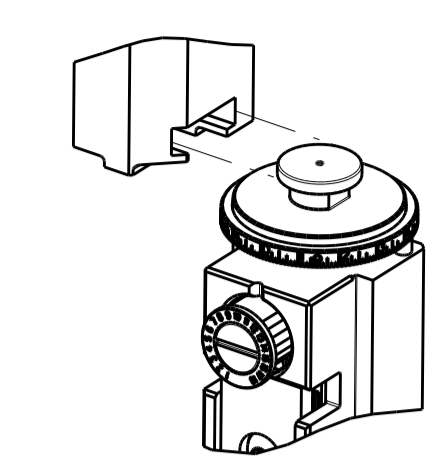


PART NUMBER	REVISION	DESCRIPTION	FEED TYPE
2266690-1	B	FINE CRIMP HEIGHT ADJUST	MECHANICAL
2266690-2	C	FINE CRIMP HEIGHT ADJUST	PNEUMATIC
7-2266690-1	B	MECHANICAL AND CRIMP TOOLING KIT	MECHANICAL
7-2266690-2	C	PNEUMATIC AND CRIMP TOOLING KIT	PNEUMATIC
7-2266690-7	A	CRIMP TOOLING KIT	-

ATLANTIC VERSION TERMINATOR INTERFACE ADAPTER



APPLICATOR DATA		
CRIMP	SIZE	TYPE
WIRE	2.00 mm [.079]	F
INSUL	2.50 mm [.098]	O

APPLICATOR INSTRUCTIONS 408-35042

TERMINAL DATA: MOLEX TERMINAL MOLEX CRIMP SPECIFICATION			
TERMINAL NAME: CP RCPT TRM 1.5			
WIRE STRIP LENGTH	INSULATION DIAMETER RANGE		
4.00-5.00 mm [1.57-.197 IN]	1.35-2.00 mm [0.53-.079 IN]		
TERMINAL APPLICATION SPECIFICATION			
ATS-638688000 Rev D			
TERMINALS APPLIED			
TE TERMINAL	MOLEX TERMINAL	TE TERMINAL	MOLEX TERMINAL
1949249-1	989151029	1949249-3	643231029
1949249-2	989151319	1949249-4	643231319

WIRE SIZE	CRIMP HEIGHT mm [INCH]	CRIMP HEIGHT REFERENCE SETTING
1.00mm2	1.32 +/- 0.05 [0.052 +/- .002]	8.0
0.75mm2	1.25 +/- 0.05 [0.049 +/- .002]	8.8
0.60mm2	1.20 +/- 0.05 [0.047 +/- .002]	9.2
0.50mm2	1.15 +/- 0.05 [0.045 +/- .002]	9.7

- 1 RECOMMENDED SPARE PARTS
- 2 REFER TO SUPPLIED INSTRUCTION SHEET FOR CLEANING, LUBRICATION AND STORAGE OF APPLICATOR.
- 3 APPLY PART NUMBER 2-23419-6 LOCTITE TO THREADS OF ITEM 242.
- 4 CRIMP HEIGHT REFERENCE SETTING WAS THE SETTING USED WHEN THE APPLICATOR WAS QUALIFIED AT THE FACTORY. ADJUSTMENT MAY BE NECESSARY WHEN RUNNING APPLICATOR IN THE FIELD.
- 5. UNLESS SPECIFIED OTHERWISE TORQUE VALUES SHALL BE USED PER DOCUMENT, 101-35000.
- 6 TERMINAL LUBRICANT IS RECOMMENDED.

***WARNING**
ON INSTALLATION, SET WIRE DISC TO CRIMP HEIGHT REFERENCE SETTING FOR LARGEST WIRE SIZE. CRIMP HEIGHT REFERENCE SETTINGS GREATER THAN THE VALUE SHOWN MAY CAUSE DAMAGE TO THE CRIMP TOOLING. REFER TO THE INSTRUCTION SHEET FOR PROPER SETUP AND ADJUSTMENTS.

LOC	DIST	REVISIONS					
A	66	P	LTN	DESCRIPTION	DATE	OWN	APVD
		1		DEVELOPMENT	03MAR2015	KH	UG
		A		RELEASED	18MAR2015	JH	CT
		B		ECR-18-018566	28NOV2018	FL	CT
		C		ECR-20-013303	18SEP2020	FJ	TE

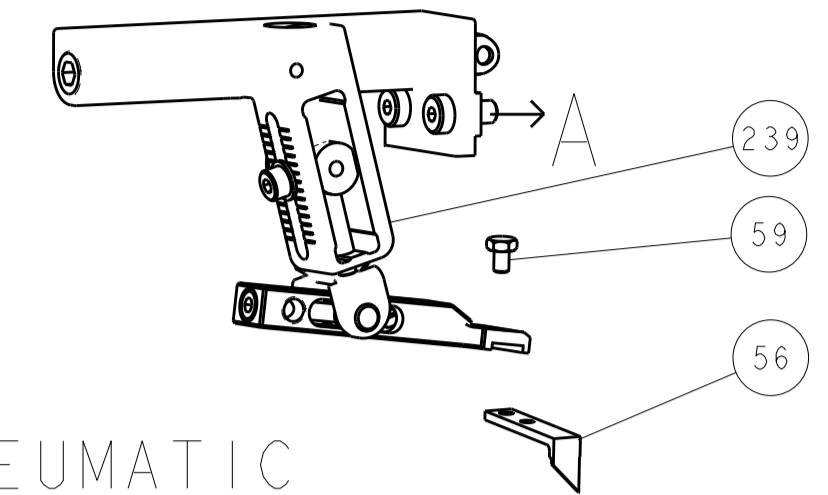
-	1	-	1	-	2119641-1	FEED CAM, AIR FEED	248	
-	1	1	1	1	2119082-4	CAM, SNAIL, INSULATION ADJUSTMENT	244	
-	1	1	1	1	2079764-1	WASHER, WAVE SPRING, CREST-TO-CREST	243	
-	1	1	1	1	2119083-1	RETAINER, INSULATION DIAL	242	
-	1	1	1	1	7-18023-7	SCR, SKT HD CAP M3 X 4.0	241	
-	-	1	-	1	2119580-1	MECHANICAL FEED ASSEMBLY	239	
-	1	-	1	-	2844940-1	AIR FEED MODULE	238	
-	REF	REF	REF	REF	994970-2	COUNTER, MAGNETIC	164	
-	1	1	1	1	2119955-1	ASSY, LUBRICATOR, SIDE FEED	113	
-	1	1	1	1	2844908-1	SCREW, LOCKING	99	
-	1	1	1	1	2844907-1	POST, LOCKING	98	
-	1	1	1	1	455888-5	SPACER, CRIMPER	82	
-	1	1	1	1	1803607-3	DOCUMENTATION PACKAGE	71	
-	1	1	1	1	2119740-1	TAG, IDENTIFICATION	67	
-	2	2	2	2	2168078-1	SCREW, DRIVE, RH, RoHS, 2 x .188	66	
-	1	1	1	1	2168083-2	SCR, SKT HD CAP, RoHS, M4 X 8.0	60	
-	1	1	1	1	5-18022-5	SCR, HEX HD CAP, M4 X 6.0	59	
-	1	1	1	1	1338685-1	PAWL, FEED	56	
-	4	4	4	4	2168083-3	SCR, SKT HD CAP, RoHS, M4 X 12.0	54	
-	2	2	2	2	1-2168083-0	SCR, SKT HD CAP, RoHS, M4 X 10	53	
-	1	1	1	1	5018030-1	NUT, HEX, REG, RoHS, M3	52	
-	1	1	1	1	811242-5	BUMPER, HOLD DOWN	51	
-	1	1	1	1	690753-2	SPACER, TONKER	50	
-	1	2	1	2	18023-9	SCR, SKT HD CAP M4 X 6.0	49	
-	-	1	-	1	2119652-1	FEED CAM, PRE FEED	48	
-	-	1	-	1	2119653-1	FEED CAM, POST FEED	47	
-	1	1	1	1	1803583-9	APPLICATOR BASIC ASSEMBLY, SF	46	
-	1	1	1	1	1803515-1	RAM ASSEMBLY, SF ATLANTIC	44	
-	1	1	1	1	1803602-1	SCR, BHSC, RoHS (M8 X 25)	41	
-	1	1	1	1	3-1752356-3	SUPPORT, TERMINAL	34	
-	2	2	2	2	2079383-5	SCR, BHSC, RoHS (M4 X 20)	33	
-	2	2	2	2	2-2844962-8	SPACER, CYLINDRICAL, STRIP GUIDE	30	
-	1	1	1	1	2844992-1	ASSEMBLY, STRIP GUIDE	29	
-	1	1	1	1	455888-3	SPACER, CRIMPER	28	
-	1	1	1	1	1320928-2	STRIP GUIDE	24	
-	1	1	1	1	2168083-2	SCR, SKT HD CAP, RoHS, M4 X 8.0	21	
-	2	2	2	2	1-18028-2	WASHER, FLAT, REG M4	20	
-	1	1	1	1	2119533-1	STRIPPER, SIDE FEED	19	
-	1	1	1	1	2119806-1	INSERT, SHEAR	13	
-	1	1	1	1	3-22280-3	SPRING, COMPRESSION	12	
-	1	1	1	1	1-356885-4	STOP, SHEAR	11	
-	1	1	1	1	2119805-1	SHEAR HOLDER, FRONT	10	
-	1	1	1	1	1803095-1	FLOATING SHEAR, FRONT	9	
-	1	2	2	1	1	2-1803055-9	ANVIL, COMBINATION	8
-	-	-	-	-	-	-	7	
-	-	-	-	-	-	-	6	
-	1	1	1	1	2119757-5	DEPRESSOR, SHEAR	5	
-	1	1	1	1	238011-2	BLOCK, CRIMPER SPACER	4	
-	1	2	2	1	1	8-1633965-9	CRIMPER, INSULATION O PREMIUM	3
-	1	1	1	1	455888-6	SPACER, CRIMPER	2	
-	1	2	2	1	1	7-1633588-8	CRIMPER, WIRE	1
-	77	-72	-71	-2	-1	PART NO	ITEM NO	

ATLANTIC VERSION
Shown on sheets 1 of 4 & 2 of 4
(Pacific version shown on sheets 3 of 4 & 4 of 4)

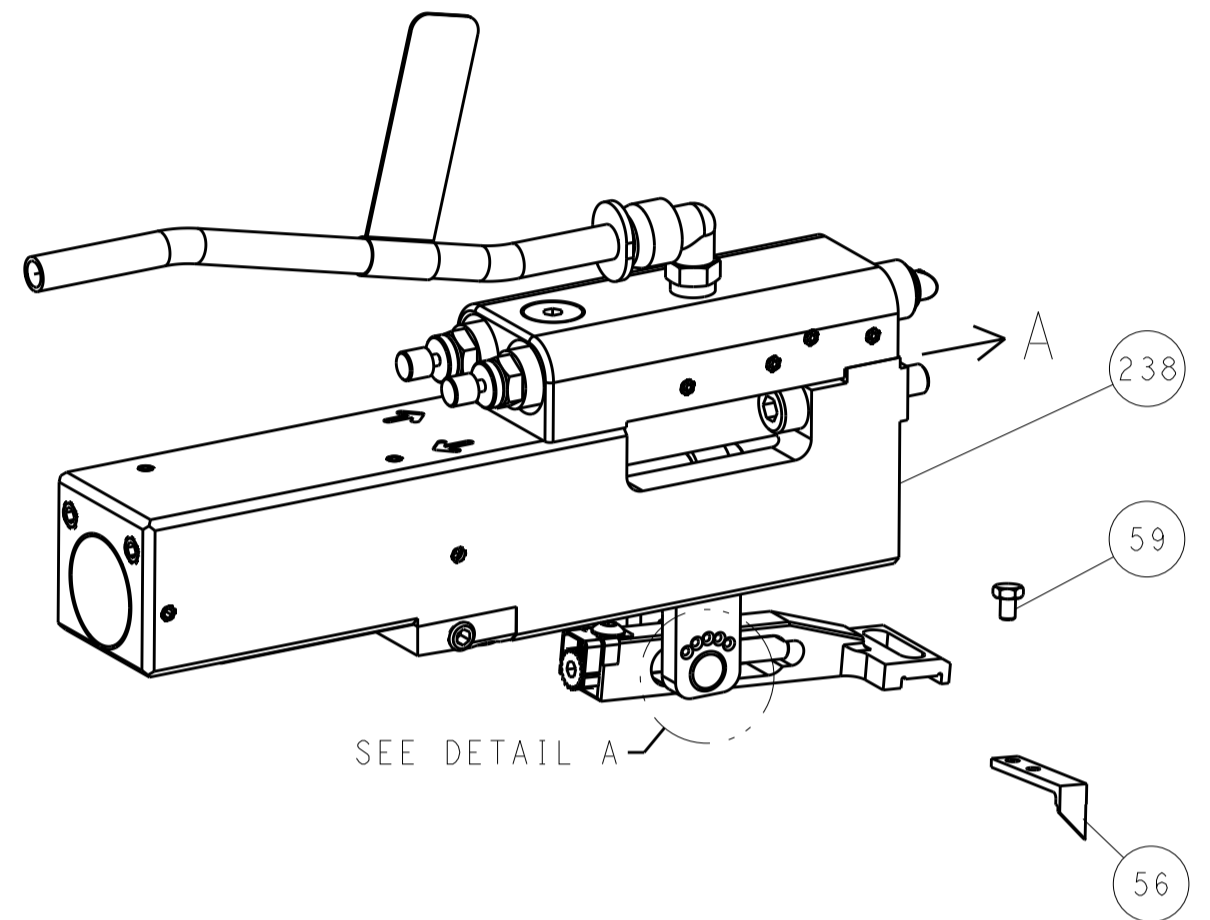
DIMENSIONS:		TOLERANCES UNLESS OTHERWISE SPECIFIED:		MATERIAL:		FINISH:	
mm	0 PLC ±	1 PLC ±	2 PLC ±	3 PLC ±	4 PLC ±	ANGLES ±	FINISH ±
				WEIGHT: - SCALE: 1:2 SHEET: 1 OF 4 REV: C			

LOC	DIST	REV	DATE	BY	APP'D
A	66				
REVISIONS			DESCRIPTION	DATE	BY
-			SEE SHEET 1	-	-

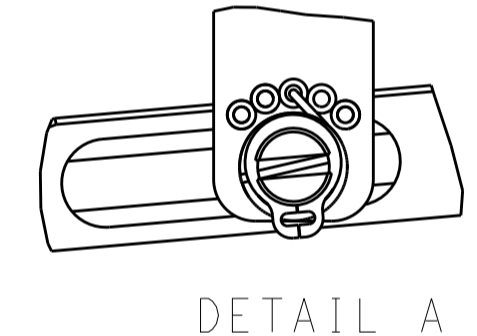
FEED TYPE MECHANICAL



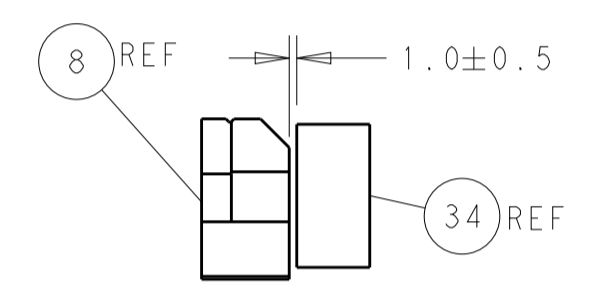
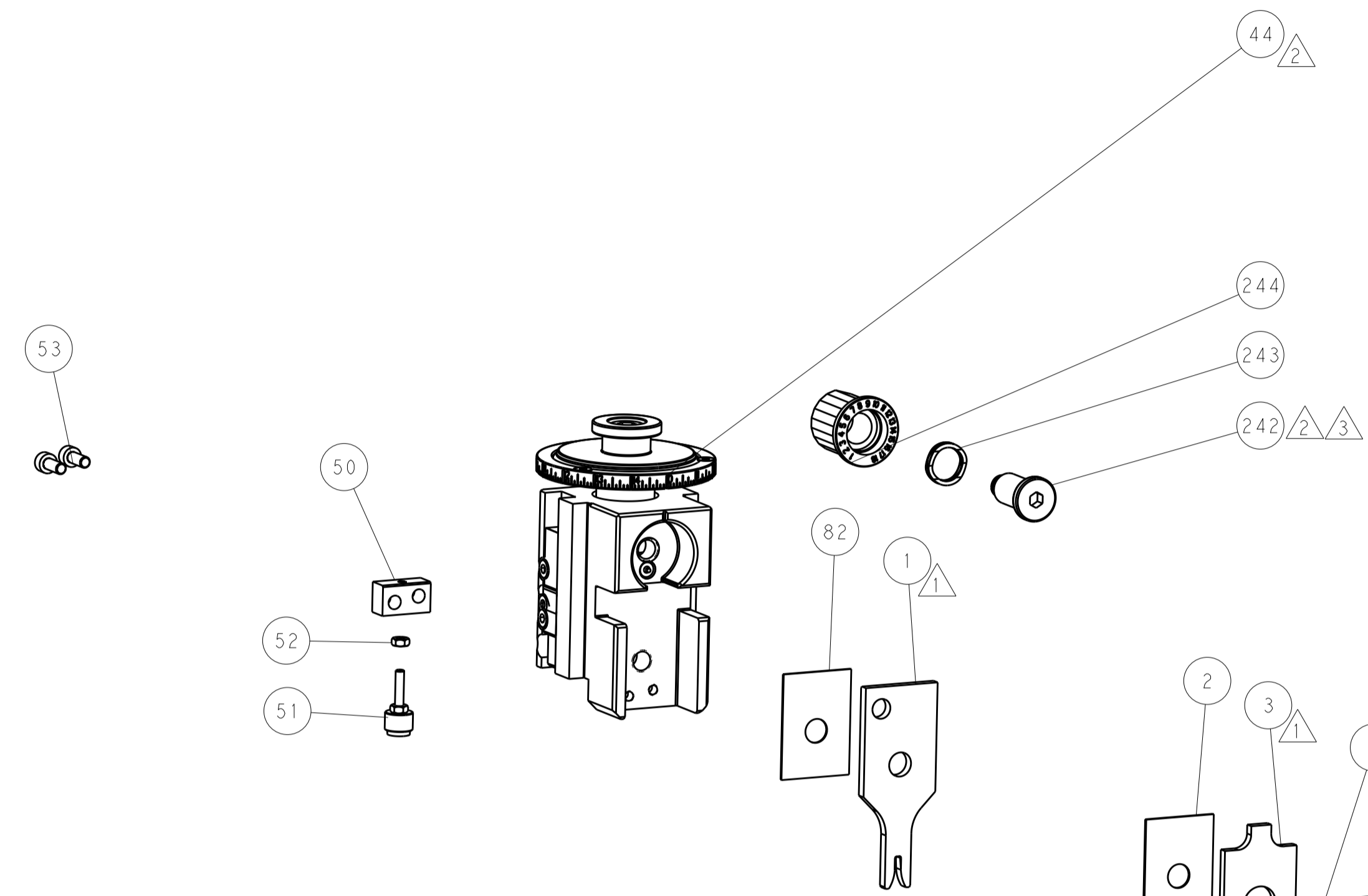
PNEUMATIC



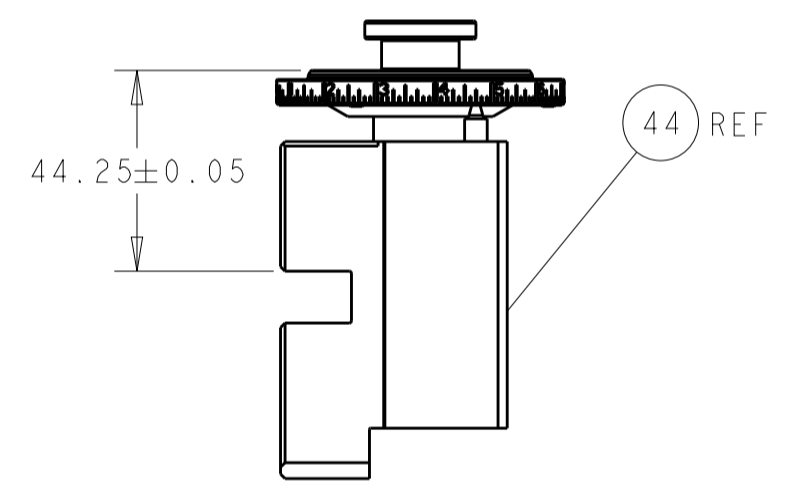
FEED SPRING SETTING POSITION (SHOWN FROM REAR SIDE)



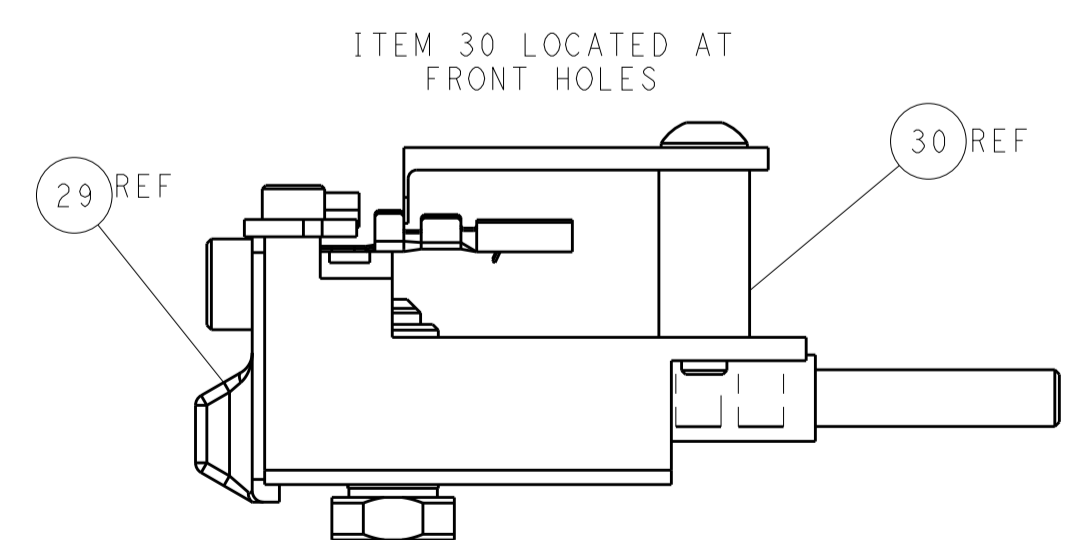
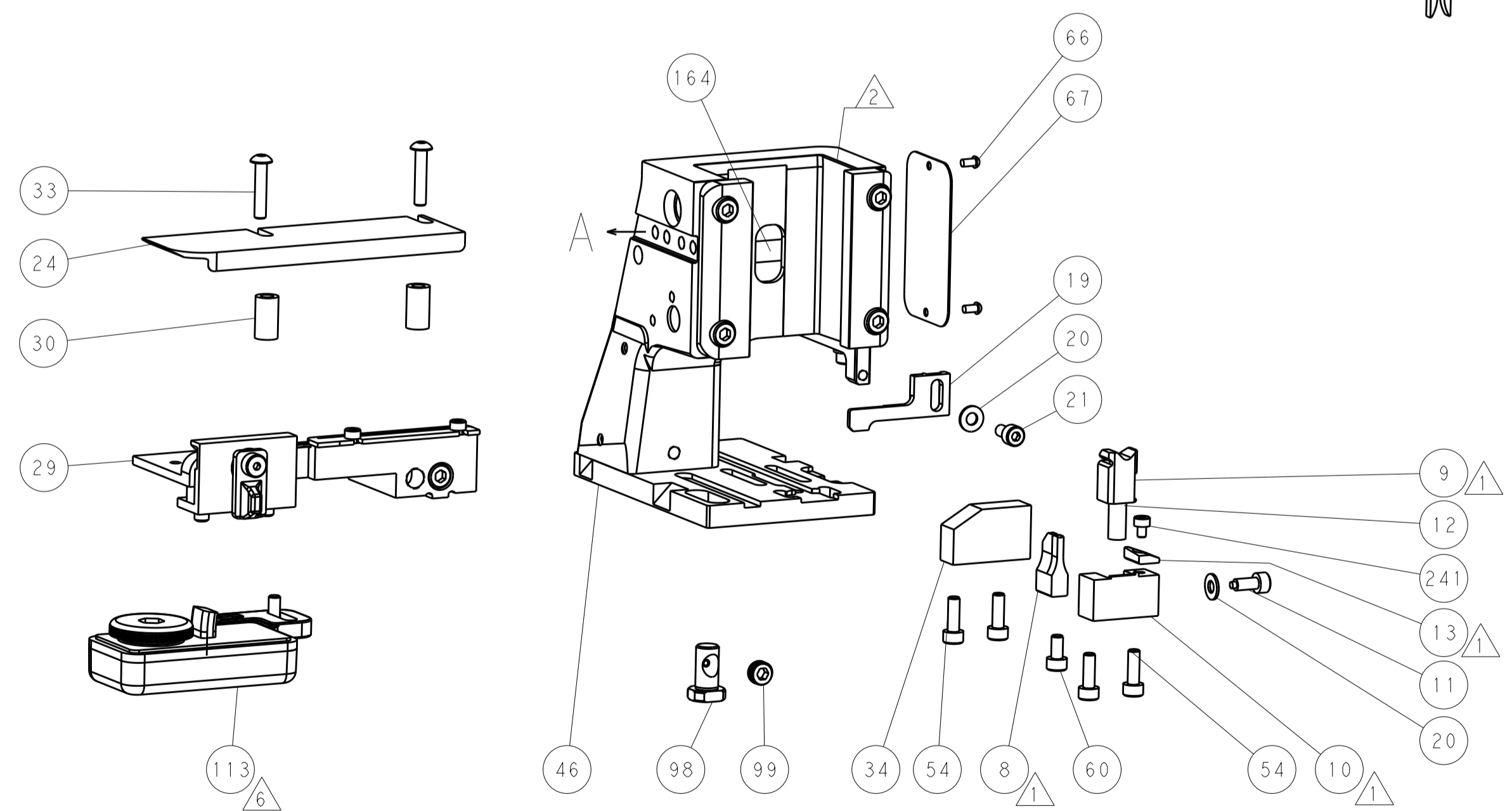
DETAIL A



TERMINAL SUPPORT LOCATION

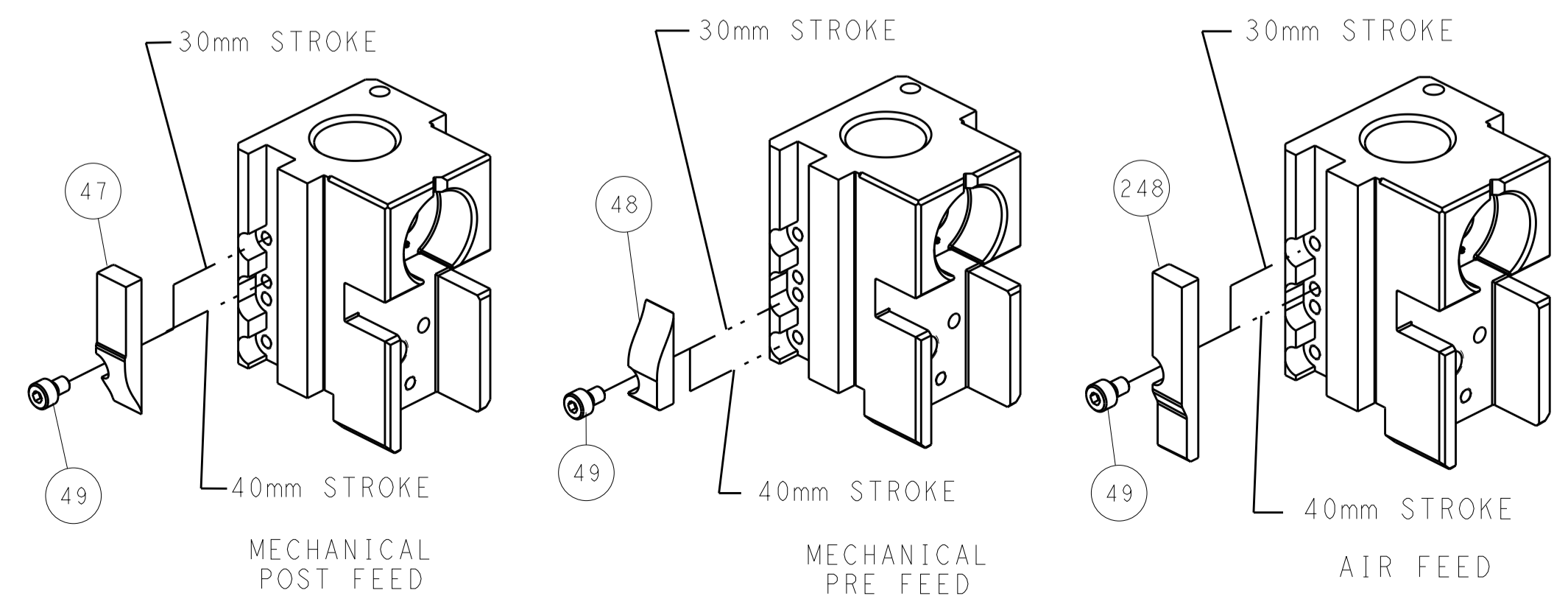


RAM SET-UP



ITEM 30 LOCATED AT FRONT HOLES

CAM POSITIONS



ATLANTIC VERSION
 Shown on sheets 1 of 4 & 2 of 4
 (Pacific version shown on sheets 3 of 4 & 4 of 4)

DIMENSIONS:		TOLERANCES UNLESS OTHERWISE SPECIFIED:		DWG: H. HUANG 03MAR2015		TE Connectivity	
mm		0 PLC ±		CHK: L. ZHANG 03MAR2015		Harrisburg, PA 17105-3608	
Ø		1 PLC ±		APP'D: H. GUO 03MAR2015		NAME: Ocean Side Feed Applicator	
H		2 PLC ±		PRODUCT SPEC		SIZE: CAGE CODE DRAWING NO	
L		3 PLC ±		APPLICATION SPEC		RESTRICTED TO	
R		4 PLC ±		WEIGHT		A1 00779 ©=2266690	
S		5 PLC ±		MATERIAL		Customer Accessible Production Drawing	
T		6 PLC ±		FINISH		SCALE: 1:2 SHEET 2 OF 4 REV C	
Ø		7 PLC ±		MATERIAL		SCALE: 1:2 SHEET 2 OF 4 REV C	
H		8 PLC ±		FINISH		SCALE: 1:2 SHEET 2 OF 4 REV C	
L		9 PLC ±		FINISH		SCALE: 1:2 SHEET 2 OF 4 REV C	
R		10 PLC ±		FINISH		SCALE: 1:2 SHEET 2 OF 4 REV C	
S		11 PLC ±		FINISH		SCALE: 1:2 SHEET 2 OF 4 REV C	
T		12 PLC ±		FINISH		SCALE: 1:2 SHEET 2 OF 4 REV C	
Ø		13 PLC ±		FINISH		SCALE: 1:2 SHEET 2 OF 4 REV C	
H		14 PLC ±		FINISH		SCALE: 1:2 SHEET 2 OF 4 REV C	
L		15 PLC ±		FINISH		SCALE: 1:2 SHEET 2 OF 4 REV C	
R		16 PLC ±		FINISH		SCALE: 1:2 SHEET 2 OF 4 REV C	
S		17 PLC ±		FINISH		SCALE: 1:2 SHEET 2 OF 4 REV C	
T		18 PLC ±		FINISH		SCALE: 1:2 SHEET 2 OF 4 REV C	
Ø		19 PLC ±		FINISH		SCALE: 1:2 SHEET 2 OF 4 REV C	
H		20 PLC ±		FINISH		SCALE: 1:2 SHEET 2 OF 4 REV C	
L		21 PLC ±		FINISH		SCALE: 1:2 SHEET 2 OF 4 REV C	
R		22 PLC ±		FINISH		SCALE: 1:2 SHEET 2 OF 4 REV C	
S		23 PLC ±		FINISH		SCALE: 1:2 SHEET 2 OF 4 REV C	
T		24 PLC ±		FINISH		SCALE: 1:2 SHEET 2 OF 4 REV C	
Ø		25 PLC ±		FINISH		SCALE: 1:2 SHEET 2 OF 4 REV C	
H		26 PLC ±		FINISH		SCALE: 1:2 SHEET 2 OF 4 REV C	
L		27 PLC ±		FINISH		SCALE: 1:2 SHEET 2 OF 4 REV C	
R		28 PLC ±		FINISH		SCALE: 1:2 SHEET 2 OF 4 REV C	
S		29 PLC ±		FINISH		SCALE: 1:2 SHEET 2 OF 4 REV C	
T		30 PLC ±		FINISH		SCALE: 1:2 SHEET 2 OF 4 REV C	
Ø		31 PLC ±		FINISH		SCALE: 1:2 SHEET 2 OF 4 REV C	
H		32 PLC ±		FINISH		SCALE: 1:2 SHEET 2 OF 4 REV C	
L		33 PLC ±		FINISH		SCALE: 1:2 SHEET 2 OF 4 REV C	
R		34 PLC ±		FINISH		SCALE: 1:2 SHEET 2 OF 4 REV C	
S		35 PLC ±		FINISH		SCALE: 1:2 SHEET 2 OF 4 REV C	
T		36 PLC ±		FINISH		SCALE: 1:2 SHEET 2 OF 4 REV C	
Ø		37 PLC ±		FINISH		SCALE: 1:2 SHEET 2 OF 4 REV C	
H		38 PLC ±		FINISH		SCALE: 1:2 SHEET 2 OF 4 REV C	
L		39 PLC ±		FINISH		SCALE: 1:2 SHEET 2 OF 4 REV C	
R		40 PLC ±		FINISH		SCALE: 1:2 SHEET 2 OF 4 REV C	
S		41 PLC ±		FINISH		SCALE: 1:2 SHEET 2 OF 4 REV C	
T		42 PLC ±		FINISH		SCALE: 1:2 SHEET 2 OF 4 REV C	
Ø		43 PLC ±		FINISH		SCALE: 1:2 SHEET 2 OF 4 REV C	
H		44 PLC ±		FINISH		SCALE: 1:2 SHEET 2 OF 4 REV C	
L		45 PLC ±		FINISH		SCALE: 1:2 SHEET 2 OF 4 REV C	
R		46 PLC ±		FINISH		SCALE: 1:2 SHEET 2 OF 4 REV C	
S		47 PLC ±		FINISH		SCALE: 1:2 SHEET 2 OF 4 REV C	
T		48 PLC ±		FINISH		SCALE: 1:2 SHEET 2 OF 4 REV C	
Ø		49 PLC ±		FINISH		SCALE: 1:2 SHEET 2 OF 4 REV C	
H		50 PLC ±		FINISH		SCALE: 1:2 SHEET 2 OF 4 REV C	
L		51 PLC ±		FINISH		SCALE: 1:2 SHEET 2 OF 4 REV C	
R		52 PLC ±		FINISH		SCALE: 1:2 SHEET 2 OF 4 REV C	
S		53 PLC ±		FINISH		SCALE: 1:2 SHEET 2 OF 4 REV C	
T		54 PLC ±		FINISH		SCALE: 1:2 SHEET 2 OF 4 REV C	
Ø		55 PLC ±		FINISH		SCALE: 1:2 SHEET 2 OF 4 REV C	
H		56 PLC ±		FINISH		SCALE: 1:2 SHEET 2 OF 4 REV C	
L		57 PLC ±		FINISH		SCALE: 1:2 SHEET 2 OF 4 REV C	
R		58 PLC ±		FINISH		SCALE: 1:2 SHEET 2 OF 4 REV C	
S		59 PLC ±		FINISH		SCALE: 1:2 SHEET 2 OF 4 REV C	
T		60 PLC ±		FINISH		SCALE: 1:2 SHEET 2 OF 4 REV C	
Ø		61 PLC ±		FINISH		SCALE: 1:2 SHEET 2 OF 4 REV C	
H		62 PLC ±		FINISH		SCALE: 1:2 SHEET 2 OF 4 REV C	
L		63 PLC ±		FINISH		SCALE: 1:2 SHEET 2 OF 4 REV C	
R		64 PLC ±		FINISH		SCALE: 1:2 SHEET 2 OF 4 REV C	
S		65 PLC ±		FINISH		SCALE: 1:2 SHEET 2 OF 4 REV C	
T		66 PLC ±		FINISH		SCALE: 1:2 SHEET 2 OF 4 REV C	
Ø		67 PLC ±		FINISH		SCALE: 1:2 SHEET 2 OF 4 REV C	
H		68 PLC ±		FINISH		SCALE: 1:2 SHEET 2 OF 4 REV C	
L		69 PLC ±		FINISH		SCALE: 1:2 SHEET 2 OF 4 REV C	
R		70 PLC ±		FINISH		SCALE: 1:2 SHEET 2 OF 4 REV C	
S		71 PLC ±		FINISH		SCALE: 1:2 SHEET 2 OF 4 REV C	
T		72 PLC ±		FINISH		SCALE: 1:2 SHEET 2 OF 4 REV C	
Ø		73 PLC ±		FINISH		SCALE: 1:2 SHEET 2 OF 4 REV C	
H		74 PLC ±		FINISH		SCALE: 1:2 SHEET 2 OF 4 REV C	
L		75 PLC ±		FINISH		SCALE: 1:2 SHEET 2 OF 4 REV C	
R		76 PLC ±		FINISH		SCALE: 1:2 SHEET 2 OF 4 REV C	
S		77 PLC ±		FINISH		SCALE: 1:2 SHEET 2 OF 4 REV C	
T		78 PLC ±		FINISH		SCALE: 1:2 SHEET 2 OF 4 REV C	
Ø		79 PLC ±		FINISH		SCALE: 1:2 SHEET 2 OF 4 REV C	
H		80 PLC ±		FINISH		SCALE: 1:2 SHEET 2 OF 4 REV C	
L		81 PLC ±		FINISH		SCALE: 1:2 SHEET 2 OF 4 REV C	
R		82 PLC ±		FINISH		SCALE: 1:2 SHEET 2 OF 4 REV C	
S		83 PLC ±		FINISH		SCALE: 1:2 SHEET 2 OF 4 REV C	
T		84 PLC ±		FINISH		SCALE: 1:2 SHEET 2 OF 4 REV C	
Ø		85 PLC ±		FINISH		SCALE: 1:2 SHEET 2 OF 4 REV C	
H		86 PLC ±		FINISH		SCALE: 1:2 SHEET 2 OF 4 REV C	
L		87 PLC ±		FINISH		SCALE: 1:2 SHEET 2 OF 4 REV C	
R		88 PLC ±		FINISH		SCALE: 1:2 SHEET 2 OF 4 REV C	
S		89 PLC ±		FINISH		SCALE: 1:2 SHEET 2 OF 4 REV C	
T		90 PLC ±		FINISH		SCALE: 1:2 SHEET 2 OF 4 REV C	
Ø		91 PLC ±		FINISH		SCALE: 1:2 SHEET 2 OF 4 REV C	
H		92 PLC ±		FINISH		SCALE: 1:2 SHEET 2 OF 4 REV C	
L		93 PLC ±		FINISH		SCALE: 1:2 SHEET 2 OF 4 REV C	
R		94 PLC ±		FINISH		SCALE: 1:2 SHEET 2 OF 4 REV C	
S		95 PLC ±		FINISH		SCALE: 1:2 SHEET 2 OF 4 REV C	
T		96 PLC ±		FINISH		SCALE: 1:2 SHEET 2 OF 4 REV C	
Ø		97 PLC ±		FINISH		SCALE: 1:2 SHEET 2 OF 4 REV C	
H		98 PLC ±		FINISH		SCALE: 1:2 SHEET 2 OF 4 REV C	
L		99 PLC ±		FINISH		SCALE: 1:2 SHEET 2 OF 4 REV C	
R		100 PLC ±		FINISH		SCALE: 1:2 SHEET 2 OF 4 REV C	

PART NUMBER	REVISION	DESCRIPTION	FEED TYPE
2-2266690-1	B	FINE CRIMP HEIGHT ADJUST	MECHANICAL
2-2266690-2	C	FINE CRIMP HEIGHT ADJUST	PNEUMATIC
7-2266690-7	A	CRIMP TOOLING KIT	-

PACIFIC VERSION TERMINATOR
INTERFACE ADAPTER



APPLICATOR DATA		
CRIMP	SIZE	TYPE
WIRE	2.00 mm [.079]	F
INSUL	2.50 mm [.098]	O

APPLICATOR INSTRUCTIONS
408-35042

TERMINAL DATA: MOLEX TERMINAL		MOLEX CRIMP SPECIFICATION	
TERMINAL NAME: CP RCPT TRM 1.5			
WIRE STRIP LENGTH 4.00-5.00 mm [.157-.197 IN]		INSULATION DIAMETER RANGE Ø1.35-2.00 mm [.053-.079 IN]	
TERMINAL APPLICATION SPECIFICATION ATS-63868000 Rev D			
TERMINALS APPLIED			
TE TERMINAL	MOLEX TERMINAL	TE TERMINAL	MOLEX TERMINAL
1949249-1	989151029	1949249-3	643231029
1949249-2	989151319	1949249-4	643231319

WIRE SIZE	CRIMP HEIGHT mm [INCH]	CRIMP HEIGHT REFERENCE SETTING
1.00mm2	1.32 +/- 0.05 [.052 +/- .002]	8.0
0.75mm2	1.25 +/- 0.05 [.049 +/- .002]	8.8
0.60mm2	1.20 +/- 0.05 [.047 +/- .002]	9.2
0.50mm2	1.15 +/- 0.05 [.045 +/- .002]	9.7

- 1 RECOMMENDED SPARE PARTS
- 2 REFER TO SUPPLIED INSTRUCTION SHEET FOR CLEANING, LUBRICATION AND STORAGE OF APPLICATOR.
- 3 APPLY PART NUMBER 2-23419-6 LOCTITE TO THREADS OF ITEM 242.
- 4 CRIMP HEIGHT REFERENCE SETTING WAS THE SETTING USED WHEN THE APPLICATOR WAS QUALIFIED AT THE FACTORY. ADJUSTMENT MAY BE NECESSARY WHEN RUNNING APPLICATOR IN THE FIELD.
- 5. UNLESS SPECIFIED OTHERWISE TORQUE VALUES SHALL BE USED PER DOCUMENT, 101-35000.
- 6 TERMINAL LUBRICANT IS RECOMMENDED.

***WARNING**
ON INSTALLATION, SET WIRE DISC TO CRIMP HEIGHT REFERENCE SETTING FOR LARGEST WIRE SIZE. CRIMP HEIGHT REFERENCE SETTINGS GREATER THAN THE VALUE SHOWN MAY CAUSE DAMAGE TO THE CRIMP TOOLING, REFER TO THE INSTRUCTION SHEET FOR PROPER SETUP AND ADJUSTMENTS.

LOC	DIST	REV	DATE	BY	APPV
A	66	-	-	-	-

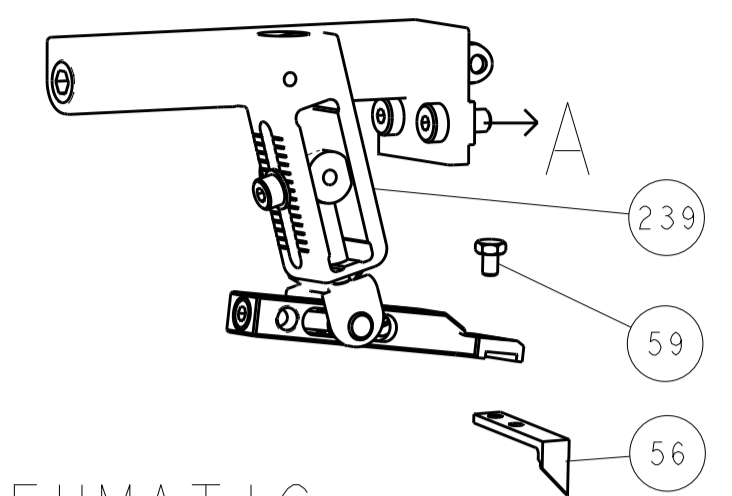
REV	DATE	BY	APPV	DESCRIPTION	ITEM NO	
-	1	1		2119082-4 CAM, SNAIL, INSULATION ADJUSTMENT	244	
-	1	1		2079764-1 WASHER, WAVE SPRING, CREST-TO-CREST	243	
3	-	1	1	2119083-1 RETAINER, INSULATION DIAL	242	
-	1	1		7-18023-7 SCR, SKT HD CAP M3 X 4.0	241	
-	-	1	1	2119580-1 MECHANICAL FEED ASSEMBLY	239	
-	1	-		2844940-1 AIR FEED MODULE	238	
-	REF	REF		994970-2 COUNTER, MAGNETIC	164	
-	1	-		2119641-2 FEED CAM, AIR FEED	151	
-	1	1		2168083-8 SCR, SKT HD CAP, RoHS, M4 X 16	144	
-	4	4		2168083-9 SCR, SKT HD CAP, RoHS, M4 X 20	143	
-	-	1		2119653-2 FEED CAM, POST FEED	142	
-	1	1		1-1803583-0 APPLICATOR BASIC ASSEMBLY, SF	141	
-	1	1		1803516-1 RAM ASSEMBLY, SF PACIFIC	140	
6	-	1	1	2119955-1 ASSY, LUBRICATOR, SIDE FEED	113	
-	1	1		2844908-1 SCREW, LOCKING	99	
-	1	1		2844907-1 POST, LOCKING	98	
-	1	1		455888-5 SPACER, CRIMPER	82	
-	1	1		1803607-3 DOCUMENTATION PACKAGE	71	
-	1	1		2119740-1 TAG IDENTIFICATION	67	
-	2	2		2168078-1 SCREW, DRIVE, RH, RoHS, 2 x .188	66	
-	1	1		5-18022-5 SCR, HEX HD CAP, M4 X 6.0	59	
-	1	1		1338685-1 PAWL, FEED	56	
-	2	2		1-2168083-0 SCR, SKT HD CAP, RoHS, M4 X 10	53	
-	1	1		5018030-1 NUT, HEX, REG, RoHS, M3	52	
-	1	1		811242-5 BUMPER, HOLD DOWN	51	
-	1	1		690753-2 SPACER, TONKER	50	
-	1	2		18023-9 SCR, SKT HD CAP M4 X 6.0	49	
-	-	1		2119652-1 FEED CAM, PRE FEED	48	
-	1	1		1803602-1 SCR, BHSC, RoHS (M8 X 25)	41	
-	1	1		3-1752356-3 SUPPORT, TERMINAL	34	
-	2	2		2079383-5 SCR, BHSC, RoHS (M4 X 20)	33	
-	2	2		2-2844962-8 SPACER, CYLINDRICAL, STRIP GUIDE	30	
-	1	1		2844992-1 ASSEMBLY, STRIP GUIDE	29	
-	1	1		455888-3 SPACER, CRIMPER	28	
-	1	1		1320928-2 STRIP GUIDE	24	
-	1	1		2168083-2 SCR, SKT HD CAP, RoHS, M4 X 8.0	21	
-	2	2		1-18028-2 WASHER, FLAT, REG M4	20	
-	1	1		2119533-1 STRIPPER, SIDE FEED	19	
1	-	1	1	2119806-1 INSERT, SHEAR	13	
-	1	1		3-22280-3 SPRING, COMPRESSION	12	
-	1	1		1-356885-4 STOP, SHEAR	11	
1	-	1	1	2119805-1 SHEAR HOLDER, FRONT	10	
1	-	1	1	1803095-1 FLOATING SHEAR, FRONT	9	
1	1	1	1	2-1803055-9 ANVIL, COMBINATION	8	
-	-	-	-	-	7	
-	-	-	-	-	6	
-	1	1		2119757-5 DEPRESSOR, SHEAR	5	
-	1	1		238011-2 BLOCK, CRIMPER SPACER	4	
1	1	1		8-1633965-9 CRIMPER, INSULATION O PREMIUM	3	
-	1	1		455888-6 SPACER, CRIMPER	2	
1	1	1		7-1633588-8 CRIMPER, WIRE	1	
-77	-22	-21		PART NO	DESCRIPTION	ITEM NO

PACIFIC VERSION
Shown on sheets 3 of 4 & 4 of 4
(Atlantic version shown on sheets 1 of 4 & 2 of 4)

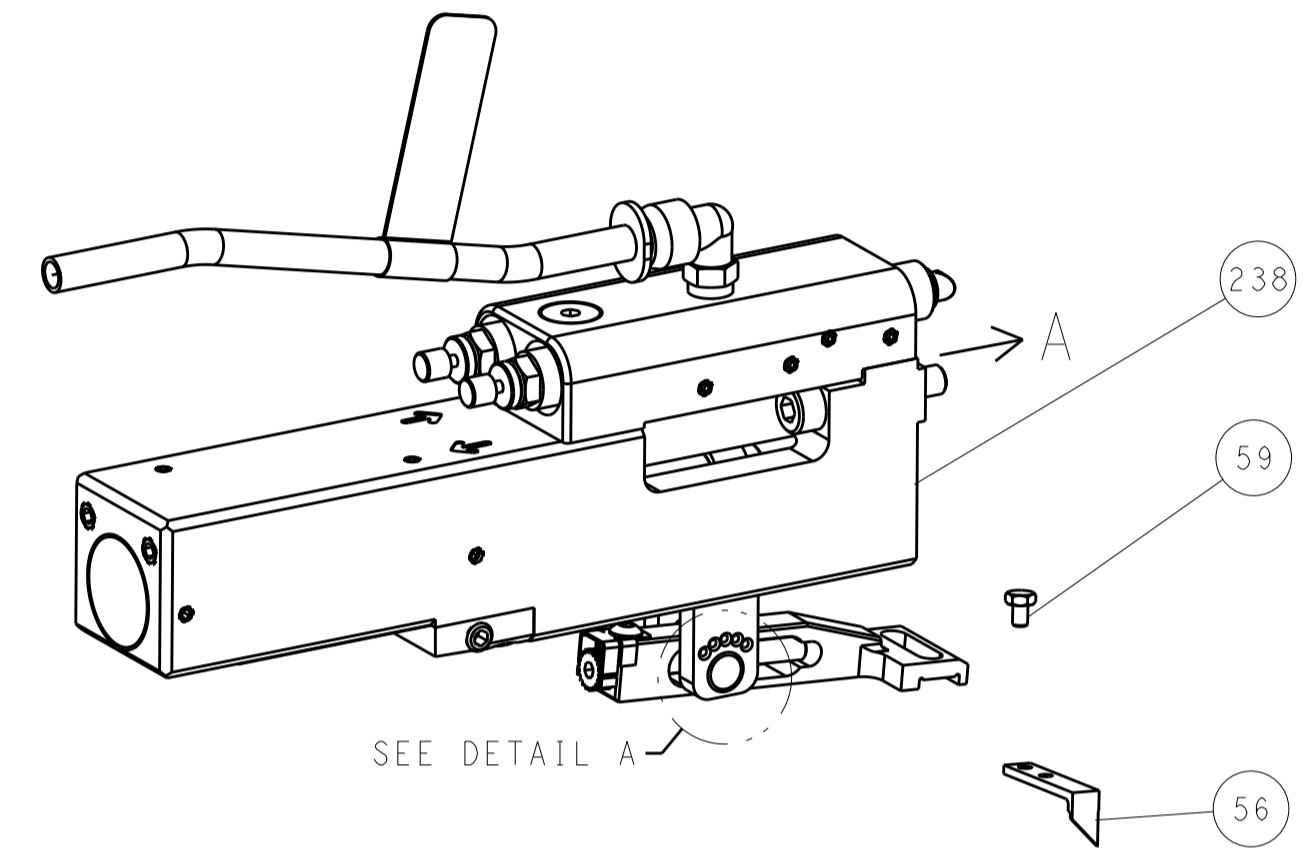
DIMENSIONS: mm		TOLERANCES UNLESS OTHERWISE SPECIFIED:		DWG: H. HUANG 03MAR2015		CHK: L. ZHANG 03MAR2015		APVD: H. GUO 03MAR2015		NAME: Ocean Side Feed Applicator	
0 PLC ±		1 PLC ±		2 PLC ±		3 PLC ±		4 PLC ±		SIZE: A1	
MATERIAL: -		FINISH: -		WEIGHT: -		SCALE: 1:2		SHEET: 3 OF 4		REV: C	

LOC		DIST		REVISIONS			
A	66	P	LTM	DESCRIPTION	DATE	DWN	APVD
		-	-	SEE SHEET 1	-	-	-

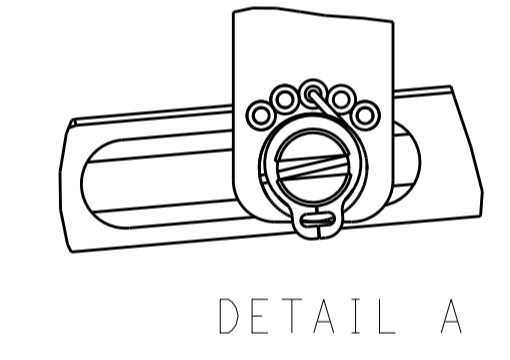
FEED TYPE MECHANICAL



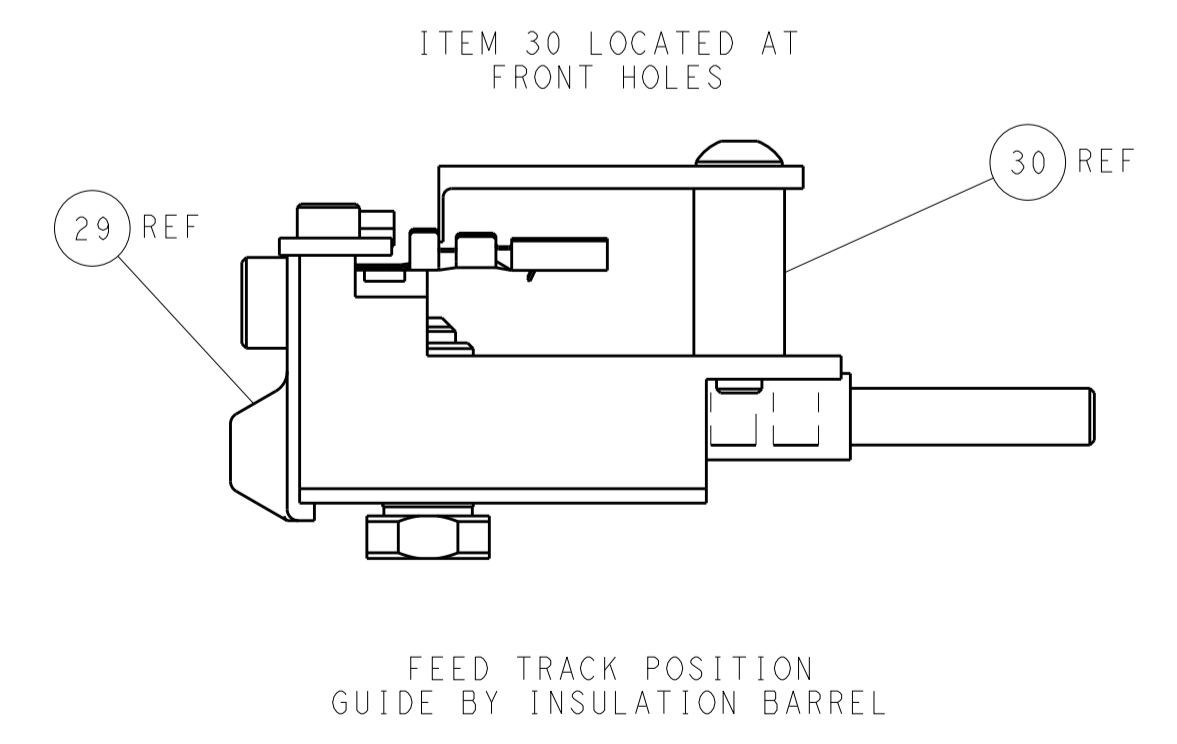
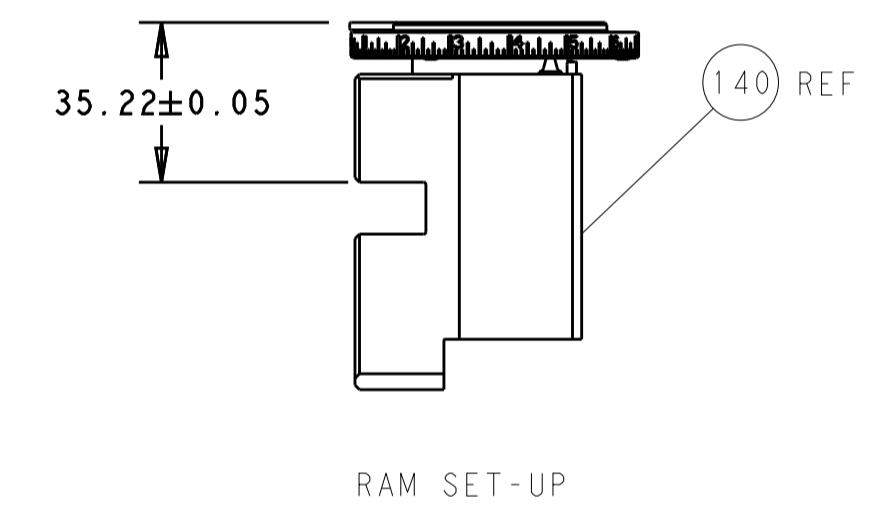
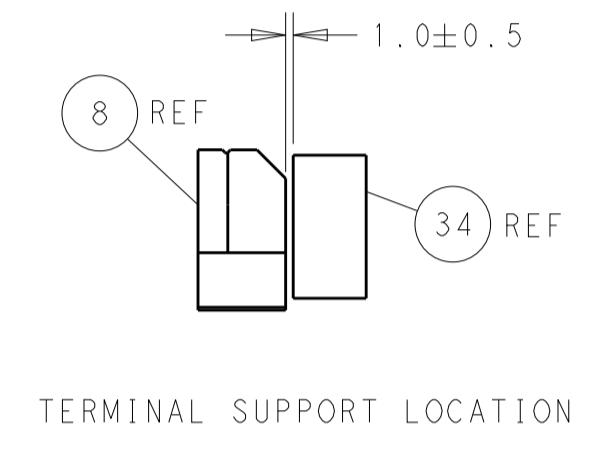
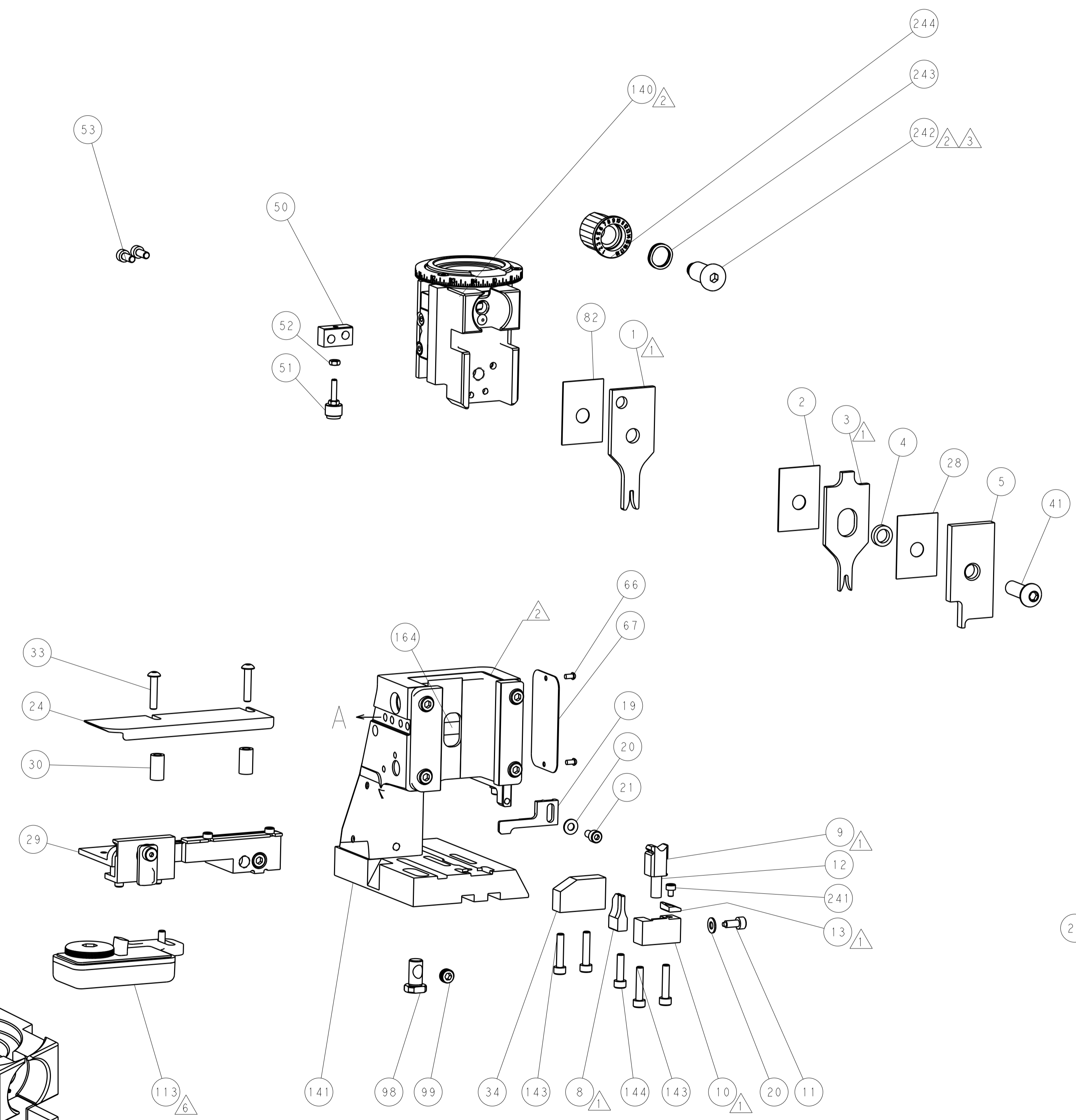
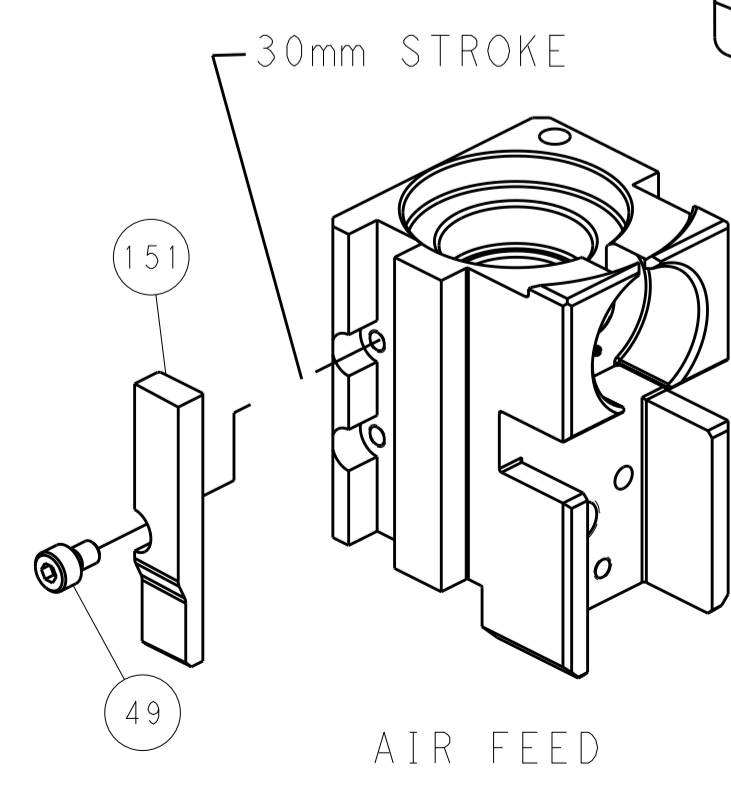
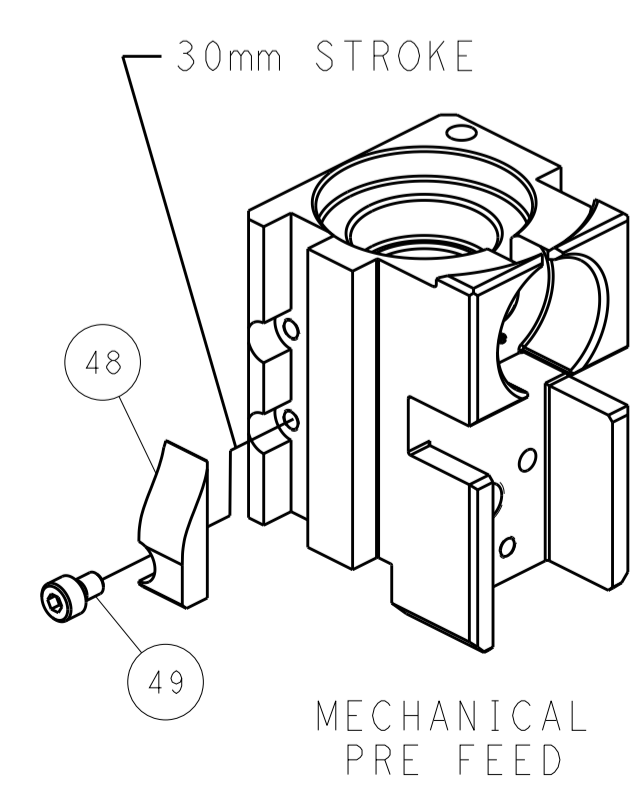
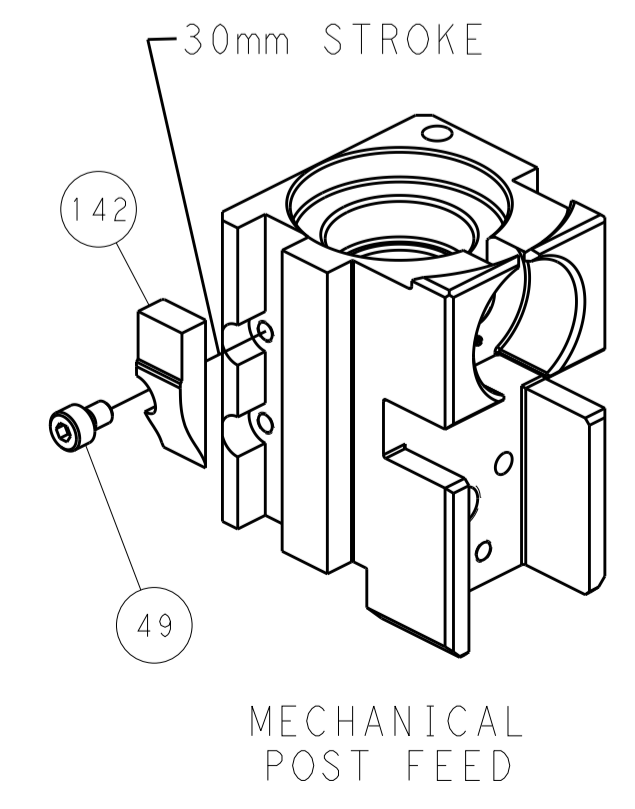
PNEUMATIC



FEED SPRING SETTING POSITION (SHOWN FROM REAR SIDE)



CAM POSITIONS



PACIFIC VERSION
 Shown on sheets 3 of 4 & 4 of 4
 (Atlantic version shown on sheets 1 of 4 & 2 of 4)

DIMENSIONS:		TOLERANCES UNLESS OTHERWISE SPECIFIED:		DWN: H. HUANG 03MAR2015		STE TE Connectivity	
mm	0 PLC ±	1 PLC ±	2 PLC ±	3 PLC ±	4 PLC ±	5 PLC ±	Harrisburg, PA 17105-3608
	ANGLES	FINISH		CHK: L. ZHANG 03MAR2015	NAME: Ocean Side Feed Applicator		
MATERIAL:				APVD: H. GUO 03MAR2015	SIZE: CAGE CODE: DRAWING NO: RESTRICTED TO		
				PRODUCT SPEC:		A1 00779 C=2266690	
				APPLICATION SPEC:		SCALE: 1:2 SHEET 4 OF 4 REV C	
				WEIGHT:		Customer Accessible Production Drawing	