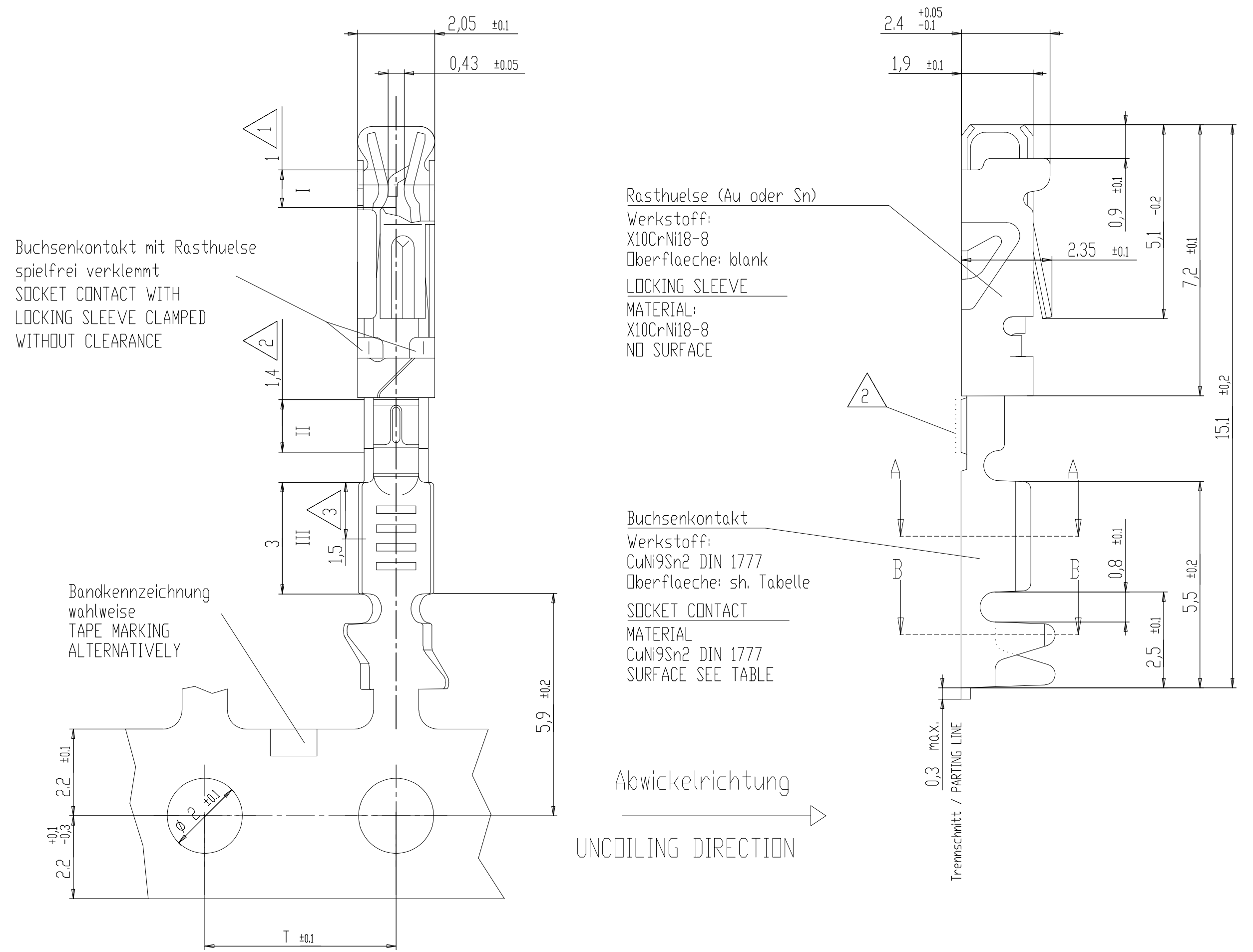
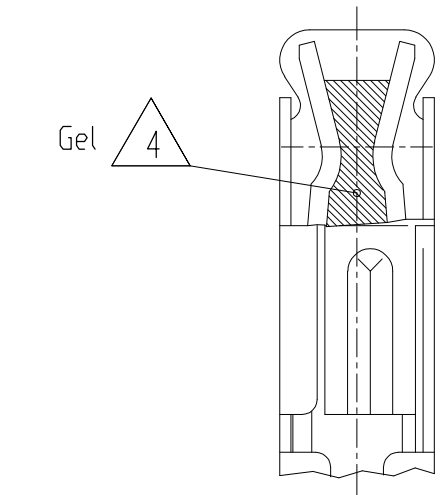


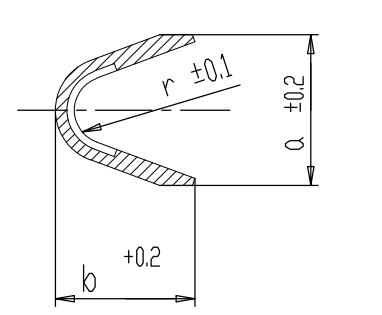
Au-Kurzschluss-Ausführung  
AU-SHORTING VERSION



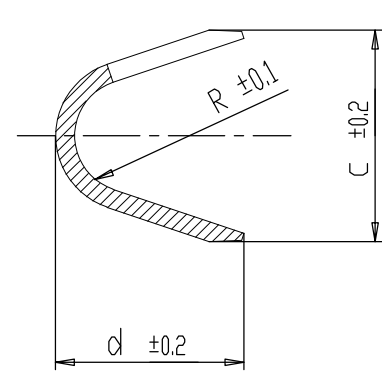
GEL VERSION  
Ausführung mit Gel



Schnitt A-A



Schnitt B-B



LOC	REV	DATE	DESCRIPTION	BY	CHK
A1	-				
REVISIONS					
REV	DATE <td>DESCRIPTION <td>BY <td>CHK <td>APPV</td> </td></td></td>	DESCRIPTION <td>BY <td>CHK <td>APPV</td> </td></td>	BY <td>CHK <td>APPV</td> </td>	CHK <td>APPV</td>	APPV
A	25AUG2000	Zeichng. ueberarbeitet/Ersetzt Siemens EC-Zeichng.	Abt	-	-
A1	03FEB2003	Zeichnung ueberarbeitet/DRAWING EG00-0336-03	Abt	-	-
A2	08NOV2004	bleifrei angepasst/LEADFREE ADAPTED	Abt	-	-
A3	19AUG2011	PN 0-1411560-4 added.	Kirsch	Goep.	

Bemerkungen  
NOTES

- 1 Kontaktbereich fuer Stiftcontact  
CONTACT AREA FOR PIN CONTACT
- 2 Kontaktbereich fuer Kurzschluss;  
nicht fuer Standard-Ausführung  
CONTACT AREA FOR SHORTING CONTACT  
NOT FOR STANDARD-TYPE
- 3 Auslauf bis 0,3µm Sn  
Ausführung Kurzschluss  
RUND TO 0.3µm Sn  
SHORTING VERSION
- 4 Befettet am Kontaktbereich mit Nylogel N760G  
CONTACT AREA DIP CREAMED WITH NYLOGEL N760G

Tabelle: Buchsenkontakte / SOCKET CONTACTS

TE	Rev.	Ausführung	Leitungsquerschnitt	Oberflaeche	Bereich I	Bereich II	Bereich III
Bestell-Nr.	Code-ND	TYPE	CONDUCTOR SIZE (mm <sup>2</sup> )	SURFACE	AREA I	AREA II	AREA III
0-1411553-1	A	Standard	0.75	Sn	3 ± 1 µm Sn feuerverzinkt / HOT-DIP TINNED		
0-1411561-2	A	Kurzschluss SHORTING VERSION	0.75	Au	>= 1 µm Au ueber/over 2±1 µm Ni	>= 1 µm Au ueber/over 2±1 µm Ni	3±1 µm Sn galv. ueber/over <= 1 µm Ni
1-1411552-1	A	Standard	0.35/0.50	Sn	3 ± 1 µm Sn feuerverzinkt / HOT-DIP TINNED		
0-1411560-4	A	Kurzschluss SHORTING VERSION	0.35/0.50	Au	>= 1 µm Au ueber/over 2±1 µm Ni	>= 1 µm Au ueber/over 2±1 µm Ni	3±1 µm Sn galv. ueber/over <= 1 µm Ni
0-1411560-1	A	Kurzschluss SHORTING VERSION	0.35/0.50	Sn	3±1 µm Sn galv. ueber/over <= 1 µm Ni	>= 1 µm Au ueber/over 2±1 µm Ni	3±1 µm Sn galv. ueber/over <= 1 µm Ni
0-1411560-2	A	Kurzschluss SHORTING VERSION	0.35/0.50	Au	>= 1 µm Au ueber/over 2±1 µm Ni	>= 1 µm Au ueber/over 2±1 µm Ni	3±1 µm Sn galv. ueber/over <= 1 µm Ni

*-1411553-*	2.4	2.45±0.15	3.35	3.1	6.0	0.55	0.9
*-1411561-*	2.4	2.45±0.15	3.35	3.1	6.0	0.55	0.9
*-1411552-*	2.0	1.85 ±0.2	2.8	2.5	5.08	0.45	0.75
*-1411560-*	2.0	1.85 ±0.2	2.8	2.5	5.08	0.45	0.75
TE-Nr.	a	b	c	d	T	r	R

Anschlagwerkzeuge  
CRIMPING TOOLS

Leitungsquerschnitt CONDUCTOR SIZE FLY-r (mm <sup>2</sup> )	Werkzeugtyp TOOL	Bestell-Nr. ORDER NO. TE	Bemerkungen REMARKS
0,35 / 0,5	ELECTRICAL	9-0541100-X	Kontakte am Band CONTACTS ON TAPE
0,75	ELECTRICAL	9-0541101-X	Kontakte am Band CONTACTS ON TAPE

Lieferform: 17.500 Stueck auf Rolle fuer 0-1411560-1/-2 und 1-1411552-1/-2  
12.500 Stueck auf Rolle fuer 0-1411561-1/-2 und 0-1411553-1  
SUPPLIED: 17.500 PIECES ON REEL FOR 0-1411560-1/-2 AND 1-1411552-1/-2  
12.500 PIECES ON REEL FOR 0-1411561-1/-2 AND 0-1411553-1

nicht bemaste Oberflaechen: Sn-flash oder Au-flash ueber Ni  
NOT REMARKED SURFACES: SN-FLASH OR Au-FLASH OVER NI

Massgebend ist der deutsche Text.  
ONLY THE GERMAN-LANGUAGE VERSION  
SHALL BE BINDING.

<small>THIS DRAWING IS UNPUBLISHED REPRODUCED WITHOUT PERMISSION MATER WITH PROBING 20</small>		<small>THIS DRAWING IS UNPUBLISHED REPRODUCED WITHOUT PERMISSION MATER WITH PROBING 20</small>		<small>THIS DRAWING IS UNPUBLISHED REPRODUCED WITHOUT PERMISSION MATER WITH PROBING 20</small>	
DWG Abraham 25AUG2000 DRK Goepfel 09OCT2000		DATE 19AUG2011 PRODUCT SPEC 108-94155		DRAWING NO. 1411614 SCALE 10/1	
PRODUCT SPEC 108-94155 APPLICATION SPEC 114-18433		SIZE A1 CASE CODE -		SHEET 1 OF 1 REV A3	
MATERIAL - FINISH / OBERFLAECHE / FINISH		WEIGHT / GEWICHT - CUSTOMER DRAWING / KUNDENZEICHNUNG		DRAWING NO. 1411614 SCALE 10/1 SHEET 1 OF 1 REV A3	