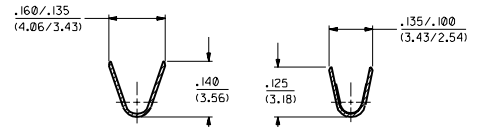
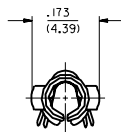
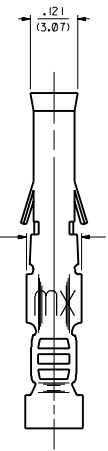
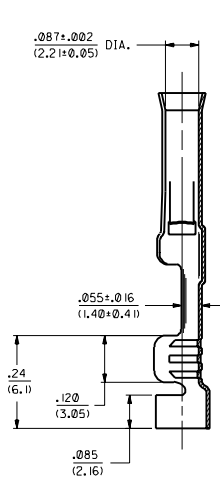
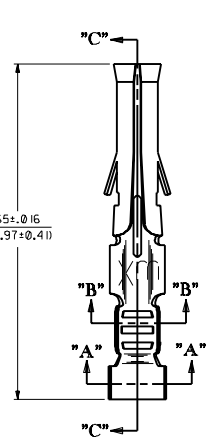


PART NO.	ENG. NO.
02-09-1122	2273-A(P90 I)
02-09-1123	2273-A(P90 IL)
-	-
-	-
-	-
-	-
-	-
-	-



SECTION "A-A"

SECTION "B-B"



SECTION "C-C"

LEGEND

2273-A(\*\*\*\*)\*  
 P-PREPLATE  
 BLANK-POSTPLATE  
 FORM  
 BLANK-CHAIN  
 L-LOOSE  
 FINISH CODE

NOTES:

1. TERMINAL FOR USE WITH .093/(2.36) SERIES HOUSINGS AND WILL ACCEPT 18 THRU 22 AWG WIRE.
2. INSERTION FORCE: 2.0 LBS. AVG. WHEN TERMINAL IS INSERTED INTO AN .093 SERIES HOUSING.
3. CONTACT RETENTION: 20 LBS. MIN.
4. THIS PART CONFORMS TO PRODUCT SPEC. 02-09.

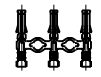
MATERIAL NOTES:

1. CARTRIDGE BRASS, ALLOY \*C26000  
 .008/(0.20) THICK, SPRING TEMPER

FINISH CODES:

901 HOT TIN DIP .000020/(0.0005) MIN.

CHAIN FORM  
 FULL SCALE



DIMENSIONS SHOWN METRIC INCH		MFG. SH. REV. L.T.R.		REVISIONS	
TITLE		REV. 1		DATE	
CRIMP TERM., FEMALE		2/10/94		RW	
.093/(2.36) DIA.		4/5/91		RW	
FOR 18 THRU 22 AWG WIRE		10/11/91		RW	
MOLEX INCORPORATED		10/11/91		RW	
PART NO. SD-2273-X1		REV. 1		DATE	
DRAWN BY CWF		SCALE 6:1		DWG. NO. SD-2273-X1	
CHECKED BY RW		SCALE 6:1		DWG. NO. SD-2273-X1	
APPROVED BY CWF		SCALE 6:1		DWG. NO. SD-2273-X1	

B	REVISE PER	DATE	BY
	ESR US 0799	2/10/94	RW
A	FINAL RELEASE	4/5/91	RW
	EXP. 10/93		