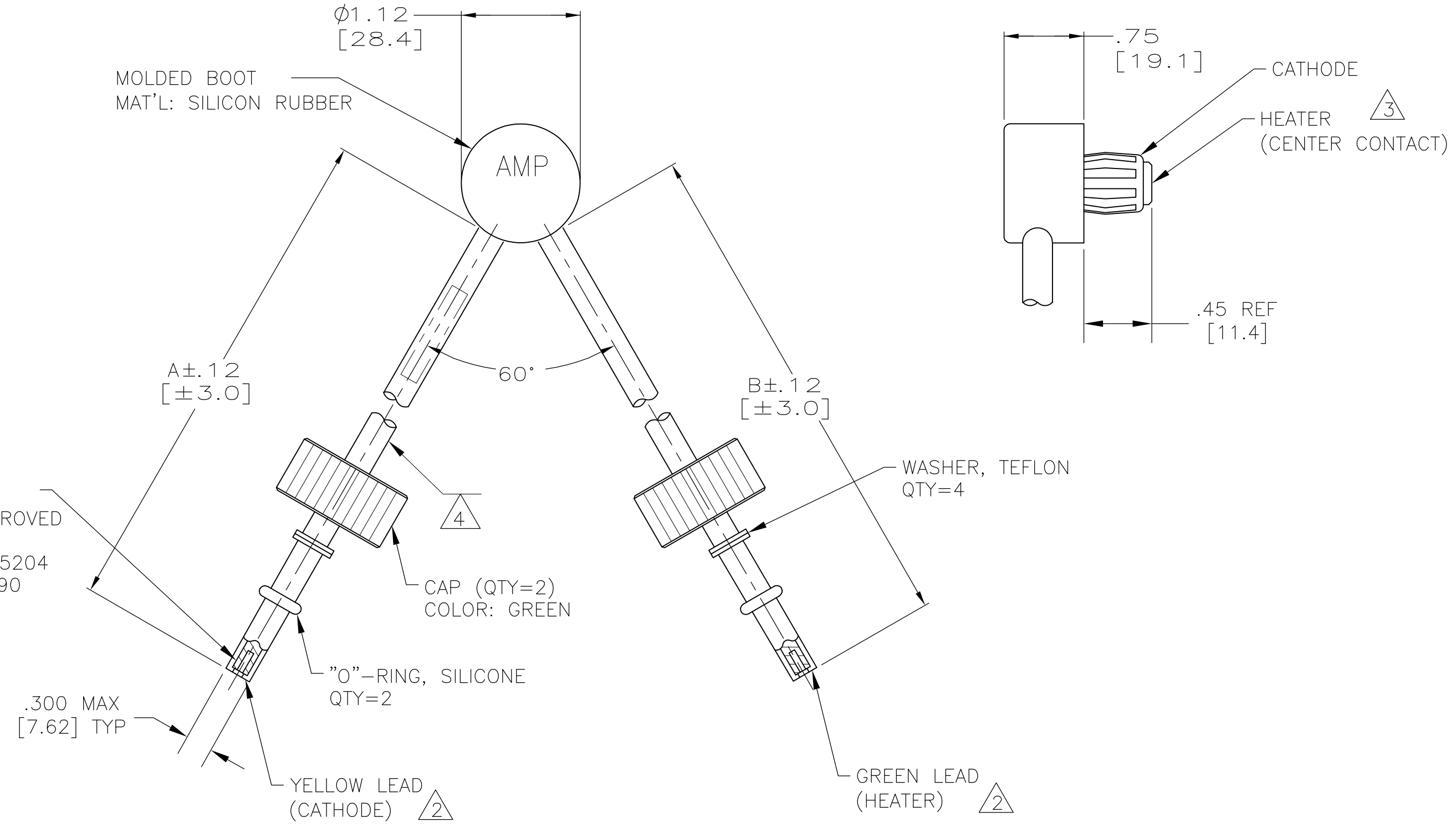


THIS DRAWING IS UNPUBLISHED. RELEASED FOR PUBLICATION
 © COPYRIGHT - By -2123 ALL RIGHTS RESERVED.

LOC		DIST		REVISIONS			
P	LTR	DESCRIPTION		DATE	DWN	APVD	
	R	REV PER ECO 13-005473		18APR2013	CT	DE	



SOCKET; SIZE #16 (QTY=2)
 MAT'L : COPPER ALLOY APPROVED
 PER MIL-C-39029
 FINISH: GOLD PER MIL-G-45204
 OVER NICKEL PER QQ-N-290

CAP (QTY=2)
 COLOR: GREEN

"O"-RING, SILICONE
 QTY=2

YELLOW LEAD
 (CATHODE)

GREEN LEAD
 (HEATER)

WASHER, TEFLON
 QTY=4

CATHODE
 HEATER
 (CENTER CONTACT)

	"B" DIM	"A" DIM	PART NO.
	14.12 [360.7]	14.12 [360.7]	840713-4
OBSOLETE	12.00 [304.8]	12.00 [304.8]	840713-3
OBSOLETE	6.00 [152.4]	6.00 [152.4]	840713-2
OBSOLETE	11.00 [279.4]	11.00 [279.4]	840713-1

1. MARK PER MIL-STD-130 ON YELLOW LEAD.
- 2 TO MATE WITH ALL LGH-3 RECEPTACLES.
- 3 TO MATE WITH MAGNETRON 4J50 AND OTHERS HAVING SIMILAR TERMINALS.
- 4 YELLOW WIRE DOES NOT HAVE A SOLID YELLOW INSULATION BUT IS A WHITE WIRE WITH A YELLOW STRIPE.

THIS DRAWING IS A CONTROLLED DOCUMENT.

DIMENSIONS: INCHES [mm]	TOLERANCES UNLESS OTHERWISE SPECIFIED: REMOVE BURRS, BREAK SHARP EDGES .015" R MAX	DWN 7-23-92 C.C.THOMAS	TE Connectivity	
		CHK 7-27-92 S.GLATFELTER	MAGNETRON CONNECTOR, LGH-3	
		APVD 7-27-92 S.GLATFELTER	SIZE A2	CAGE CODE 00779
		PRODUCT SPEC	DRAWING NO C=840713	RESTRICTED TO
MATERIAL	FINISH	APPLICATION SPEC	SCALE 1:1	SHEET 1 OF 1
		WEIGHT	REV R	
CUSTOMER DRAWING				