

CC1600-Series



Rackmount Modem System

The scalable CC1600-Series 19" rackmountable card cage consolidates up to 16 V.92/56K modem cards for dial-up or 2- and 4-wire leased line service. This system is ideal for businesses that want to provide dial-in remote access, dial-in/dial-out datacomm or dial-out faxing.

Features

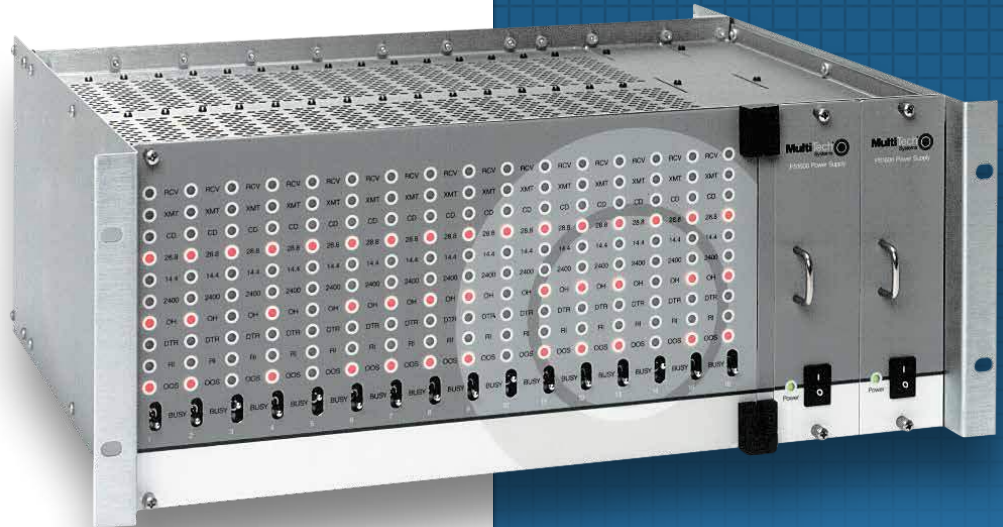
Rackmount Chassis

- Supports up to 16 V.92/56K modem cards
- Hot-swappable modem cards
- Hot-swappable, dual redundant power supplies*
- Easily scaled capacity to accommodate increased load/usage

Modem Card

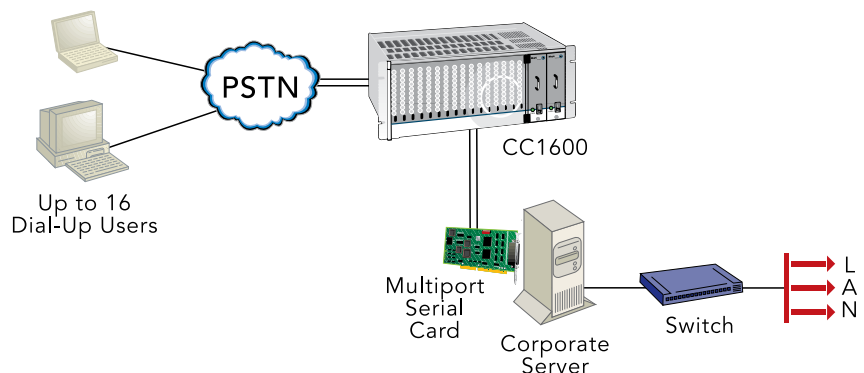
- V.92/56K download speeds and 48K upload speeds when connecting with V.92 servers
- Class 1 and Class 2 faxing at 14.4K
- V.44 compression improves data throughput rates
- Synchronous and asynchronous support
- Dial-up and 2-wire leased line support
- 4-wire leased line support and dial backup
- Remote configuration for centralized setup and management
- Pass-through and fixed callback security
- U.S. caller ID reporting
- Flash memory for easy updates
- Two-year warranty

* Sold separately.



Benefits

- Consolidate modems
- Easily scaled
- Proven reliability
- Easy to install



Multiport serial cards connect to modems in CC1600 rack for dial-up users.

Specifications

Card Cage

Description: Metal construction with vent holes, built-in mounting brackets, & connections for power, data ports, & phone line or digital service

Power Supply: 70W fully loaded; 5VDC & ±15VDC regulated

Cooling Fan: 1

Connectors: One 3-prong grounded receptacle, 16 DB25 data ports, & 16 RJ-11 jacks

Physical Description

19" w × 7" h × 15" d

(48 cm × 18 cm × 38 cm)

Weight: 21 lbs. with 1 power supply (9.6 kg)

Operating Temp: +32° to +120° F (0 to +50° C)

Modem Cards

Rates

Data: V.92/56K downloads & 48K upload speeds from V.92 servers; V.90/56K downloads from V.90 servers, 33.6K bps transfers with other servers

Fax: 14.4K & below

Error Correction: V.42

Data Compression: V.44, V.42bis, MNP® Class 5

Fax Standards: V.17, Group 3; Class 1 & Class 2

DTE Interface: RS-232C/D

Physical Description

10.5" w × 5.5" h × 0.9" d; 1.5 lbs.

(26.7 cm × 14.0 cm × 2.2 cm; 0.68 kg)

Operating Temp: +32° to +120° F (0 to +50° C)

Ordering Information

Product	Description	Region
Card Cage		
CC1600-11L	RJ-11 Chassis (Dial-Up)	US/Can
Power Supply		
PS1600	90-245v AC Power Supply	US/Can
Modem Card		
MT5600BR-V92	56K Rack Modem	US/Can

Services & Warranty

Multi-Tech's comprehensive Support Services programs offer a full array of options to suit your specific needs. These services are aimed at protecting your investment, extending the life of your solution or product, and reducing total cost of ownership. Our seasoned technical experts, with an average tenure of more than 10 years, can walk you through smooth installations, troubleshoot issues and help you with configurations. Products include a 2-year warranty that can be extended up to 5 years via Multi-Tech's Extended Warranty program, which offers the convenience of Overnight Service* for optimal uptime.

Extended Warranty & Overnight Services

To give you peace-of-mind and protect your investment, our Extended Warranty Service Plans ensure your Multi-Tech products are covered for 1, 2, or 3 years beyond the manufacturer's warranty with an optional Overnight Service plan*.

Installation Support

Multi-Tech's Installation Support Service delivers priority service with the ability to work one-on-one with an experienced Multi-Tech technical support engineer, to guide you through the installation process for our products.

Technical Support Services

At Multi-Tech, we're committed to providing you personalized attention and quality service while providing you a quick response to your product support needs. We have several options of support for you to choose from.

For additional information on Support Services as well as other service offerings, please contact your Multi-Tech representative or visit www.multitech.com/support.go.

* Overnight replacement service is currently available for U.S. customers.

World Headquarters

Multi-Tech Systems, Inc.
2205 Woodale Drive
Mounds View, MN 55112 U.S.A.
Tel: 763-785-3500
Toll-Free: 800-328-9717
Email: sales@multitech.com
www.multitech.com

EMEA Headquarters

Multi-Tech Systems (EMEA)
Unit 1, Thames Court
2 Richfield Avenue
Reading, Berkshire RG1 8EQ
United Kingdom
Tel: +(44) 118 959 7774
Email: sales@multitech.co.uk

Produced in the U.S. of U.S. and non-U.S. components. Features and specifications are subject to change without notice.

Trademarks and Registered Trademarks: Multi-Tech and the Multi-Tech logo: Multi-Tech Systems, Inc. All other products and technologies are the trademarks or registered trademarks of their respective holders.

4/13 • 86000316 • © 2013 by Multi-Tech Systems, Inc. All rights reserved.

