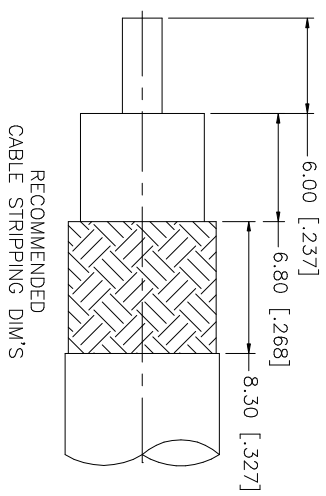
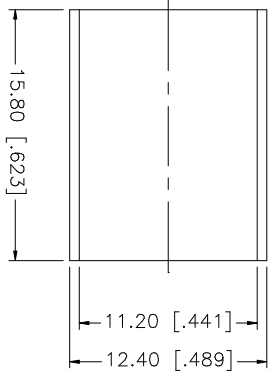
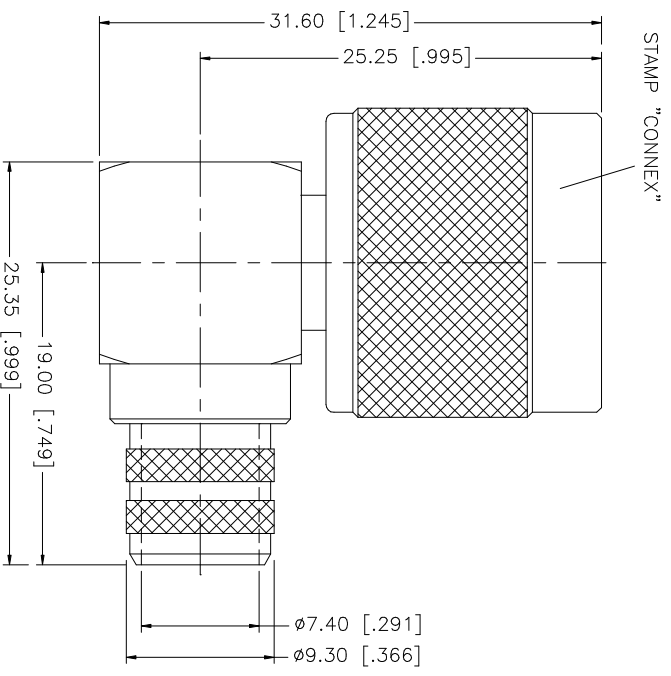


REV.	DATE	DESCRIPTION
NC	08/23/99	INITIAL RELEASE
A	06/01/04	UPDATE DRAWING FORMAT
B	04/30/06	ADD RG214/U DOUBLE BRAID CABLE



NOTE:
 1. CRIMPED FERRULE
 HEX CRIMP SIZE .429"
 2. CONTACT PIN TO SOLDER

NO.	DESCRIPTION	MATERIAL	FINISH	QTY	UNLESS OTHERWISE SPECIFIED DIMENSIONS ARE IN MILLIMETERS. DIMENSIONS IN [] ARE IN INCHES AND FOR CUSTOMER REFERENCE ONLY. UNLESS OTHERWISE SPECIFIED TOLERANCES FOR MILLIMETERS ARE: 0.5 - 8mm ± 0.20mm 8 - 30mm ± 0.40mm 30 - 120mm ± 0.50mm UNLESS OTHERWISE SPECIFIED TOLERANCES FOR INCHES ARE: .020 - .315 = ± 0.007" .315 - 1.180 = ± 0.015" 1.180 - 4.724 = ± 0.020"	DO NOT SCALE DRAWING	APPROVALS	DATE	PART DESCRIPTION	PART NO.	DWG. NO.	REV.	SIZE	SCALE
8									Amphenol Connex N R/A CRIMP PLUG RG214/U DOUBLE BRAID CABLE	172167	172167.DWG	B	A	NA
7														
6	FERRULE	COPPER	NEXCOTE	1										
5	CLAMP NUT	BRASS	NEXCOTE	1										
4	CONTACT PIN	BRASS	GOLD	1										
3	INSULATOR	TEFLON	NATURAL	1										
2	BODY/BARREL	BRASS	NEXCOTE	1										
1	DESCRIPTION													

CAD FILE	ISSUED	CHECKED	DRAWN
C:/172/172167.DWG	1 OF 1		G.R.S.