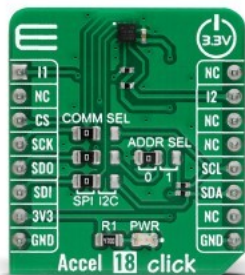


Accel 18 Click



PID: MIKROE-4826

Accel 18 Click is a compact add-on board that contains an acceleration sensor. This board features the [MC3419](#), a digital output 3-axis accelerometer with a feature set optimized for consumer product motion sensing from [MEMSIC](#). It allows selectable full-scale acceleration measurements in ranges of $\pm 2g$, $\pm 4g$, $\pm 8g$, and $\pm 16g$ in three axes with a configurable host interface that supports both SPI and I2C serial communication. The MC3419 also features a dedicated motion block that implements algorithms to support any motion and shake detection, tilt/flip and tilt 35 position detection. This Click board™ is suitable for various applications such as vibration and condition monitoring, test and measurements, predictive maintenance, and more.

Accel 18 Click is supported by a [mikroSDK](#) compliant library, which includes functions that simplify software development. This [Click board™](#) comes as a fully tested product, ready to be used on a system equipped with the [mikroBUS™](#) socket.

Mikroe produces entire development toolchains for all major microcontroller architectures.

Committed to excellency, we are dedicated to helping engineers bring the project development up to speed and achieve outstanding results.



ISO 27001: 2013 certification of informational security management system.
 ISO 14001: 2015 certification of environmental management system.
 OHSAS 18001: 2008 certification of occupational health and safety management system.



ISO 9001: 2015 certification of quality management system (QMS).

Specifications

Type	Motion
Applications	Can be used for various applications such as vibration and condition monitoring, test and measurements, predictive maintenance, and more
On-board modules	MC3419 - 16-bit digital triaxial acceleration sensor with a feature set optimized for consumer product motion sensing from MEMSIC
Key Features	Low power consumption, high performance, high reliability, integrated interrupt features, selectable serial interface, and more
Interface	I2C,SPI
ClickID	No
Compatibility	mikroBUS
Click board size	S (28.6 x 25.4 mm)
Input Voltage	3.3V

Resources

[mikroBUS™](#)

[mikroSDK](#)

[Click board™ Catalog](#)

[Click Boards™](#)

Downloads

[Accel 18 click 2D and 3D files](#)

[MC3419 datasheet](#)

[Accel 18 click schematic](#)

[Accel 18 click example on Libstock](#)

Mikroe produces entire development toolchains for all major microcontroller architectures.

Committed to excellency, we are dedicated to helping engineers bring the project development up to speed and achieve outstanding results.



ISO 27001: 2013 certification of informational security management system.
 ISO 14001: 2015 certification of environmental management system.
 OHSAS 18001: 2008 certification of occupational health and safety management system.



ISO 9001: 2015 certification of quality management system (QMS).